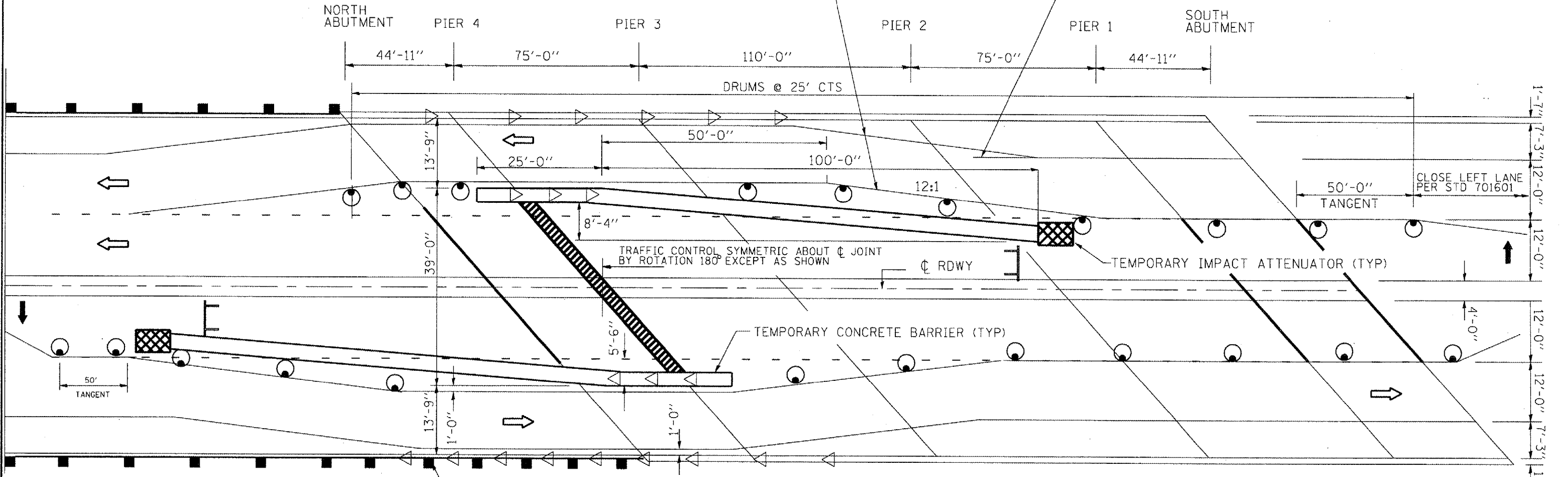


F.A.P. RTE.	SECTION	COUNTY	TOTAL SHEETS	SHEET NO.
860 348	2006-007 I	KANE/KENDALL	38	6A
STA.		TO STA.		
FED. ROAD DIST. NO.		ILLINOIS FED. AID PROJECT		

WEAVE RIGHT LANE.
TEMPORARY TAPE TYPE III, RIGHT EDGE LINE SHALL BE WHITE & THE LEFT EDGE LINE SHALL BE YELLOW

COVER CONFLICTING PVMT MARKINGS WITH BLACK TYPE III TAPE



STAGE I

NOTE:
TYPE III TAPE & ITS REMOVAL & TRAFFIC CONTROL SHOWN ON THIS SHEET ARE INCLUDED IN THE COST OF "TRAFFIC CONTROL & PROTECTION (SPECIAL)"

- DRUM WITH STEADY BURNING LIGHT
- ⊥ TYPE III BARRICADE
- ◁ MONODIRECTIONAL BARRIER WALL / GUARDRAIL MARKER
- ➡ DIRECTION OF TRAFFIC
- ↑ ARROW BOARD

PLOT DATE • 12/21/2007
 FILE NAME • s:\projects\112786\112786.dwg
 PLOT SCALE • 1/8"=1'-0"
 USER NAME • mshah11

△ ADDED SHEET, 12/19/07 RB

REVISIONS	
NAME	DATE

ILLINOIS DEPARTMENT OF TRANSPORTATION
 TRAFFIC STAGING
 LOCATION 1
 IL 31 OVER BNSF RR
 SN 047-0006
 SCALE: VERT. _____
 HORIZ. _____
 DATE _____
 DRAWN BY _____
 CHECKED BY _____