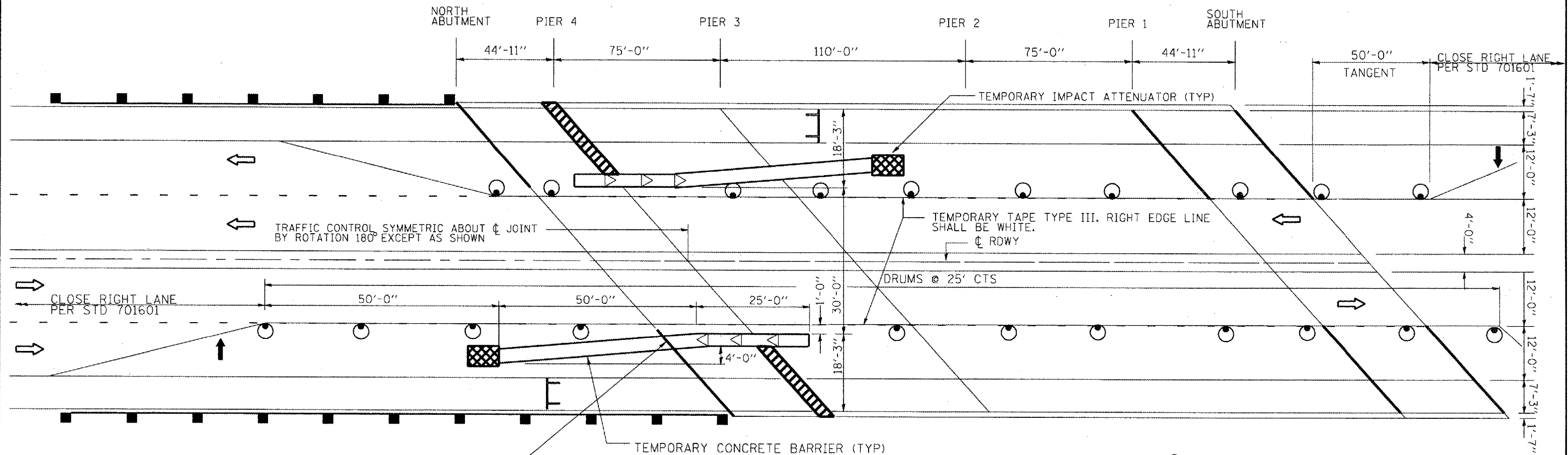
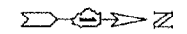


F.A.P. RTE.	SECTION	COUNTY	TOTAL SHEETS	SHEET NO.
950 349	2006-007 I	KANE/KENDALL	38	6B
STA.		TO STA.		
FED. ROAD DIST. NO.	ILLINOIS FED. AID PROJECT			

SHEET 3B OF 4



THIS AREA OF JOINT REPAIR TO BE DONE AFTER BARRIER WALL IS REMOVED AND REPLACED WITH DRUMS IN GAP ALONG C NB RDWY

STAGE II

NOTE:  
TYPE III TAPE & ITS REMOVAL & TRAFFIC CONTROL SHOWN ON THIS SHEET ARE INCLUDED IN THE COST OF "TRAFFIC CONTROL & PROTECTION (SPECIAL)"

- DRUM WITH STEADY BURNING LIGHT
- TYPE III BARRICADE
- MONODIRECTIONAL BARRIER WALL/GAURDRAIL MARKER
- DIRECTION OF TRAFFIC
- ARROW BOARD

REVISIONS	
NAME	DATE

ILLINOIS DEPARTMENT OF TRANSPORTATION  
TRAFFIC STAGING  
LOCATION 1  
IL 31 OVER BNSF RR  
SN 047-0006

SCALE: VERT. HORIZ. DATE  
DRAWN BY  
CHECKED BY

△ ADDED SHEET, 12/19/07 RB

PLT DATE: 12/21/07  
FILE NAME: s:\p\047006\121706\121706.dwg  
PLOT SCALE: 1/8"=1'-0"  
USER NAME: mitchellr