

ROUTE	SECTION	COUNTY	TOTAL SHEETS	SHEET NUMBER
FAP 860 AND 349	2006-007 I	KANE & KENDALL	38	2

CONTRACT NO. 60B26

INDEX OF SHEETS

<u>SHEET NO</u>	<u>DESCRIPTION</u>
1	TITLE SHEET
2	INDEX OF SHEETS & STATE STANDARDS
3	GENERAL NOTES
4	SUMMARY OF QUANTITIES
* 5 - 8	BRIDGE REPAIR DETAILS (LOC 1: SN 047-0006)
9 - 35	BRIDGE REPAIR DETAILS (LOC 2: SN 045-0039)
36 - 37	TRAFFIC STAGING PLAN (LOC 2: SN 045-0039)
38	TRAFFIC CONTROL AND PROTECTION AT TURN BAYS (TO REMAIN OPEN TO TRAFFIC)

* INCLUDES 6A, 6B, 7A-7C 

STATE STANDARDS

<u>STANDARD NO</u>	<u>DESCRIPTION</u>
701011-01	OFF-ROAD MOVING OPERATIONS, 2L, 2W, DAY ONLY
701301-02	LANE CLOSURE, 2L, 2W, SHORT TIME OPERATIONS
701601-05	URBAN LANE CLOSURE, MULTILANE, 1W OR 2W WITH NONTRAVERSABLE MEDIAN
701606-05	URBAN LANE CLOSURE, MULTILANE, 2W WITH MOUNTABLE MEDIAN
701901	TRAFFIC CONTROL DEVICES

ILLINOIS DEPARTMENT OF TRANSPORTATION

INDEX OF SHEETS
STATE STANDARDS

 Rev. 1-2-08

Rev.

F.A.P. RTE.	SECTION	COUNTY	TOTAL SHEETS	SHEET NO.
349	2006-007 I	KANE & KENDALL	38	4
FED. ROAD DIST. NO. 1		ILLINOIS	HIGHWAY PROJECT	

SUMMARY OF QUANTITIES			CONSTRUCTION TYPE CODE SFTY-2A		
CODE NO	ITEM	UNIT	TOTAL QUANTITIES	LOC 1	LOC 2
			100% STATE	047-0006 KENDALL CO	045-0039 KANE CO
28100107	STONE RIPRAP, CLASS A4	SO YD	40.4		40.4
28200200	FILTER FABRIC	SO YD	63.6		63.6
50800515	BAR SPLICERS	EACH	24	24	
50800205	REINFORCEMENT BARS, EPOXY COATED	POUND	3030	3030	
50300255	CONCRETE SUPERSTRUCTURE	CU YD	18.3	18.3	
50102400	CONCRETE REMOVAL	CU YD	18.3	18.3	
52000340	NEOPRENE EXPANSION JOINT 4"	FOOT	135	135	
67000400	ENGINEER'S FIELD OFFICE, TYPE A	CALMO	3	1	2
67100100	MOBILIZATION	L SUM	1	0.25	0.75
70101800	TRAFFIC CONTROL AND PROTECTION, (SPECIAL)	L SUM	1	0.50	0.50
*81800340	AERIAL CABLE, 3-1/C NO. 8 WITH MESSENGER WIRE	FOOT	40		40
70400100	TEMPORARY CONCRETE BARRIER	FOOT	250	250	△
70400200	RELOCATE TEMPORARY CONCRETE BARRIER	FOOT	150	150	
*89502300	REMOVE ELECTRIC CABLE FROM CONDUIT	FOOT	30		30
*89502350	REMOVE AND REINSTALL ELECTRIC CABLE FROM CONDUIT	FOOT	30		30
X0320887	POLYMER CONCRETE	CU FT	32.2	16.0	16.2
X0321744	SILICONE JOINT SEALER, 2"	FOOT	597.6	401.6	196
X0322467	TEMPORARY INFORMATION SIGNING FOR LANE CLOSURE	SO FT	144	48	96

SUMMARY OF QUANTITIES			CONSTRUCTION TYPE CODE SFTY-2A		
CODE NO	ITEM	UNIT	TOTAL QUANTITIES	LOC 1	LOC 2
			100% STATE	047-0006 KENDALL CO	045-0039 KANE CO
X0322933	SILICONE JOINT SEALER, 2.5"	FOOT	63.3		63.3
*X0323574	MAINTENANCE OF LIGHTING SYSTEM	CAL MO	1		1
*X0323710	REMOVE CONDUIT ATTACHED TO STRUCTURE	FOOT	30		30
X0325303	STRUCTURAL REPAIR OF CONCRETE (DEPTH GREATER THAN 5 INCHES)	SO FT	70.2		70.2
X0325305	STRUCTURAL REPAIR OF CONCRETE (DEPTH EQUAL TO OR LESS THAN 5 INCHES)	SO FT	1743.1		1743.1
*X8110145	CONDUIT ATTACHED TO STRUCTURE, 1" DIA. RIGID GALVANIZED STEEL, PVC COATED	FOOT	30		30
Z0030240	IMPACT ATTENUATORS, TEMPORARY (NON-REDIRECTIVE), TEST LEVEL 2	EACH	2	2	
Z0010605	CLEANING DRAINAGE SYSTEM	L SUM	1		1
Z0048665	RAILROAD PROTECTIVE LIABILITY INSURANCE	L SUM	1	0.5	0.5
Z0073200	TEMPORARY SHORING AND CRIBBING	EACH	12		12
*X0325906	ELECTRIC CABLE IN CONDUIT, (EPR-TYPE RHW), 3-1/C NO. 10, 1/C NO. 10 GROUND	FOOT	32		32
Z0030340	IMPACT ATTENUATORS, RELOCATE (NON-REDIRECTIVE), TEST LEVEL 2	EACH	2	2	

△ Rev. 1-2-08

*SPECIALTY ITEMS

REVISIONS	
NAME	DATE

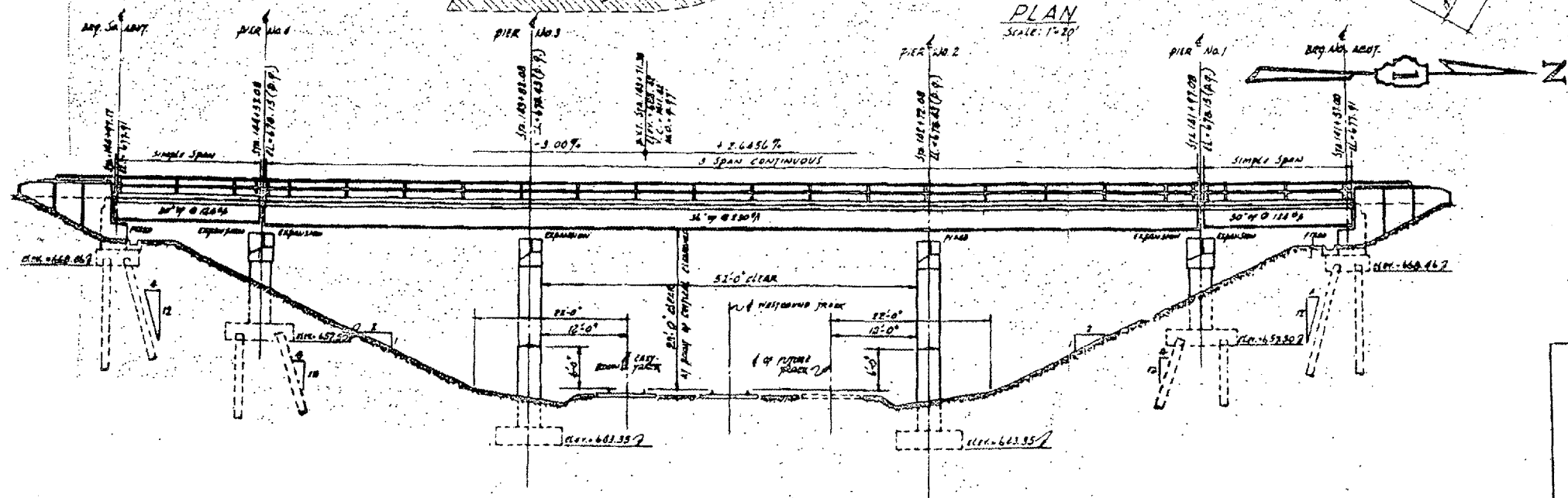
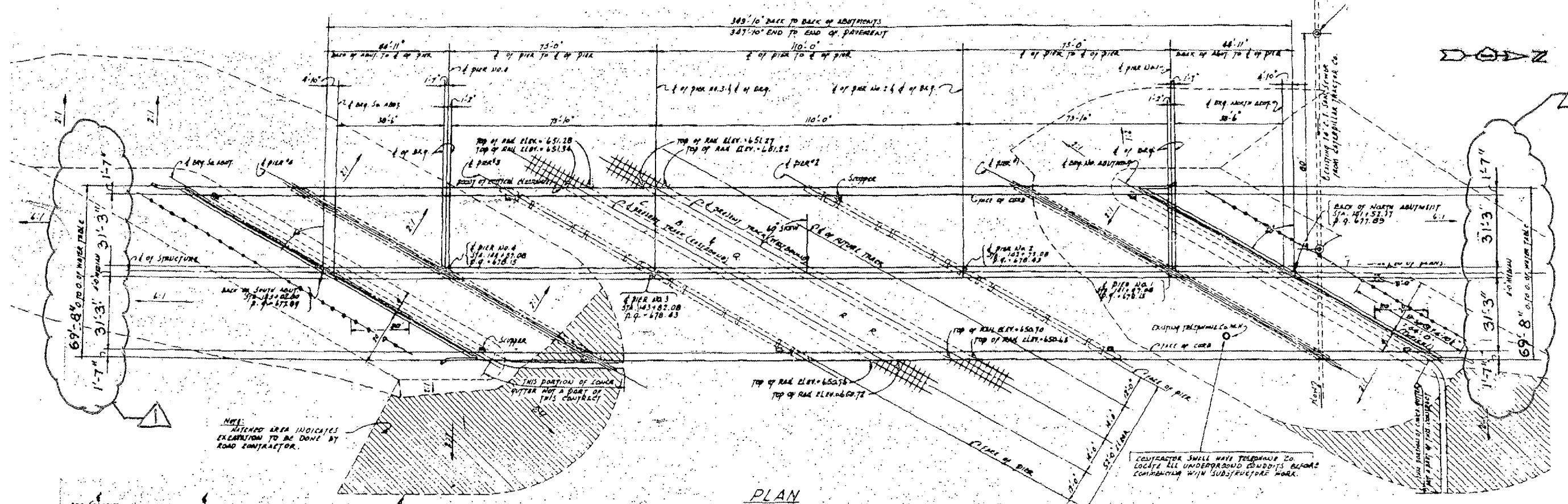
ILLINOIS DEPARTMENT OF TRANSPORTATION
SUMMARY OF QUANTITIES

11/5/2007

ROUTE	SECTION	COUNTY	TOTAL SHEETS	SHEET NUMBER
FAP 860 AND 349	2006-007 I	KANE & KENDALL	38	5

CONTRACT NO. 60B26

SHEET 1 OF 4



**FOR
INFORMATION
ONLY**

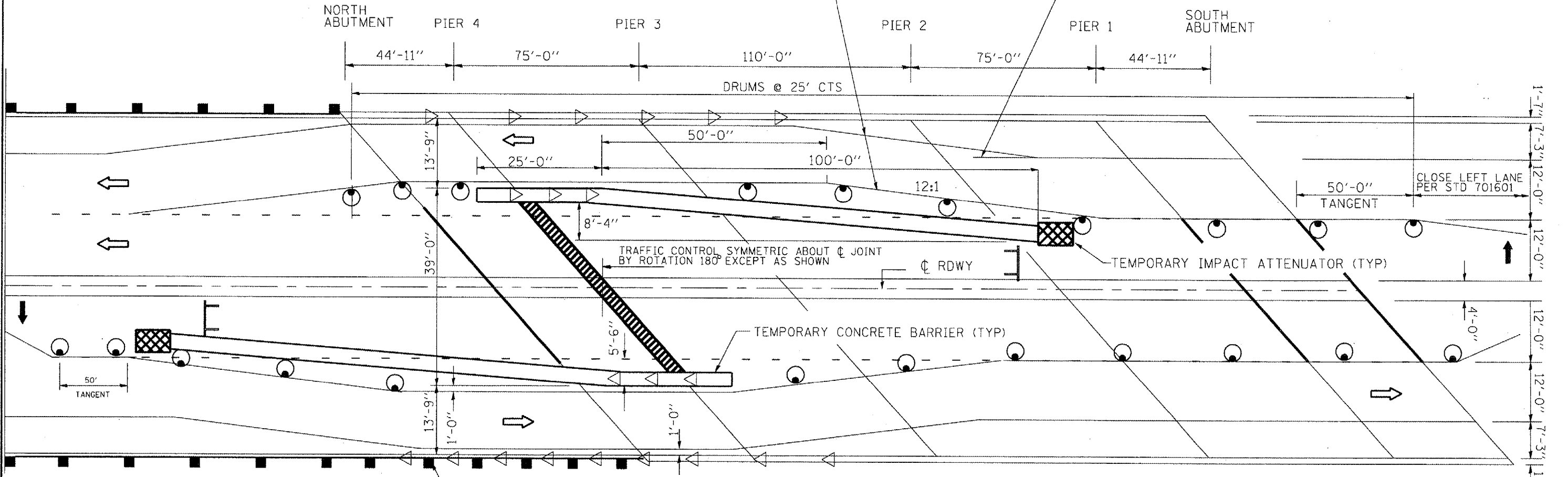
ILLINOIS DEPARTMENT OF TRANSPORTATION
LOCATION 1
PLAN & ELEVATION
IL 31 OVER BNSF RR
SN 047-0006

Rev 12/19/07 RB REV

F.A.P. RTE.	SECTION	COUNTY	TOTAL SHEETS	SHEET NO.
860 348	2006-007 I	KANE/KENDALL	38	6A
STA.		TO STA.		
FED. ROAD DIST. NO.		ILLINOIS FED. AID PROJECT		

WEAVE RIGHT LANE.
TEMPORARY TAPE TYPE III, RIGHT EDGE LINE SHALL BE WHITE & THE LEFT EDGE LINE SHALL BE YELLOW

COVER CONFLICTING PVMT MARKINGS WITH BLACK TYPE III TAPE



TRAFFIC CONTROL SYMMETRIC ABOUT ϕ JOINT BY ROTATION 180° EXCEPT AS SHOWN

ϕ RDWY

TEMPORARY IMPACT ATTENUATOR (TYP)

TEMPORARY CONCRETE BARRIER (TYP)

EXIST. GUARDRAIL

STAGE I

- DRUM WITH STEADY BURNING LIGHT
- TYPE III BARRICADE
- MONODIRECTIONAL BARRIER WALL / GUARDRAIL MARKER
- DIRECTION OF TRAFFIC
- ARROW BOARD

NOTE:
TYPE III TAPE & ITS REMOVAL & TRAFFIC CONTROL SHOWN ON THIS SHEET ARE INCLUDED IN THE COST OF "TRAFFIC CONTROL & PROTECTION (SPECIAL)"

PLOT DATE • 12/21/2007
 FILE NAME • s:\projects\112786\112786.dwg
 PLOT SCALE • 1/8"=1'-0"
 USER NAME • mcmahill

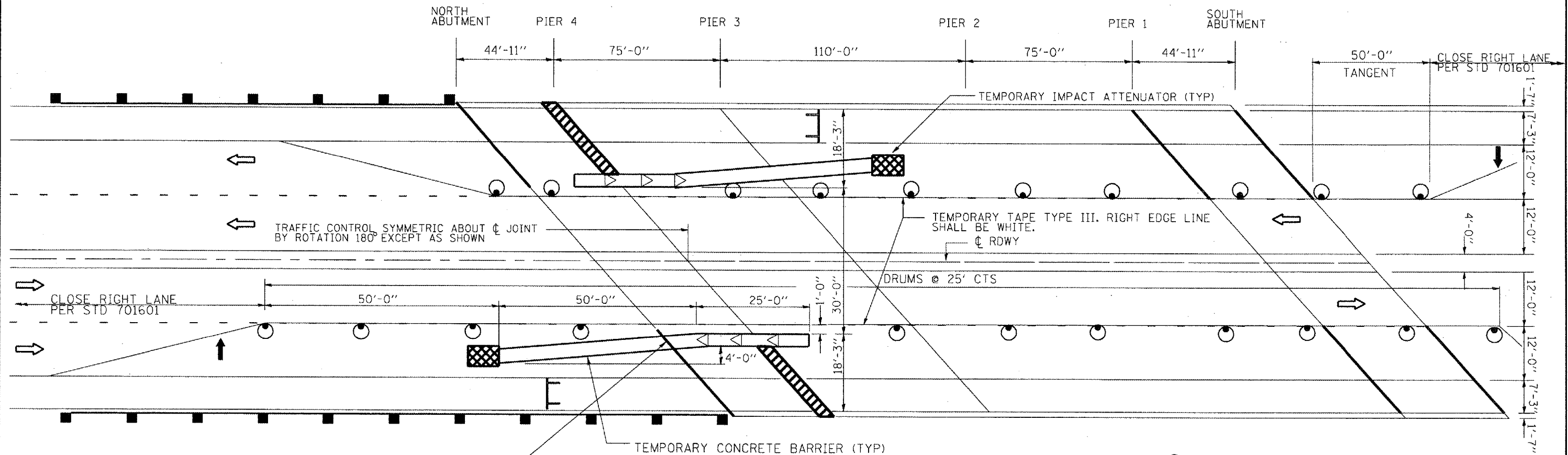
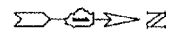
△ ADDED SHEET, 12/19/07 RB

REVISIONS	
NAME	DATE

ILLINOIS DEPARTMENT OF TRANSPORTATION
 TRAFFIC STAGING
 LOCATION 1
 IL 31 OVER BNSF RR
 SN 047-0006
 SCALE: VERT. _____
 HORIZ. _____
 DATE _____
 DRAWN BY _____
 CHECKED BY _____

F.A.P. RTE.	SECTION	COUNTY	TOTAL SHEETS	SHEET NO.
950 349	2006-007 I	KANE/KENDALL	38	6B
STA.		TO STA.		
FED. ROAD DIST. NO.	ILLINOIS FED. AID PROJECT			

SHEET 3B OF 4



TRAFFIC CONTROL SYMMETRIC ABOUT ϕ JOINT BY ROTATION 180° EXCEPT AS SHOWN

TEMPORARY TAPE TYPE III. RIGHT EDGE LINE SHALL BE WHITE.

DRUMS @ 25' CTS

TEMPORARY CONCRETE BARRIER (TYP)

THIS AREA OF JOINT REPAIR TO BE DONE AFTER BARRIER WALL IS REMOVED AND REPLACED WITH DRUMS IN GAP ALONG ϕ NB RDWY

STAGE II

NOTE:
TYPE III TAPE & ITS REMOVAL & TRAFFIC CONTROL SHOWN ON THIS SHEET ARE INCLUDED IN THE COST OF "TRAFFIC CONTROL & PROTECTION (SPECIAL)"

- DRUM WITH STEADY BURNING LIGHT
- TYPE III BARRICADE
- MONODIRECTIONAL BARRIER WALL/GAURDRAIL MARKER
- DIRECTION OF TRAFFIC
- ARROW BOARD

REVISIONS	
NAME	DATE

ILLINOIS DEPARTMENT OF TRANSPORTATION
TRAFFIC STAGING
LOCATION 1
IL 31 OVER BNSF RR
SN 047-0006

SCALE: VERT. HORIZ. DATE DRAWN BY CHECKED BY

△ ADDED SHEET, 12/19/07 RB

PLOT DATE: 12/21/07
 FILE NAME: s:\p\047006\121707\047006.dwg
 PLOT SCALE: 1/8"=1'-0"
 USER NAME: mitchellr