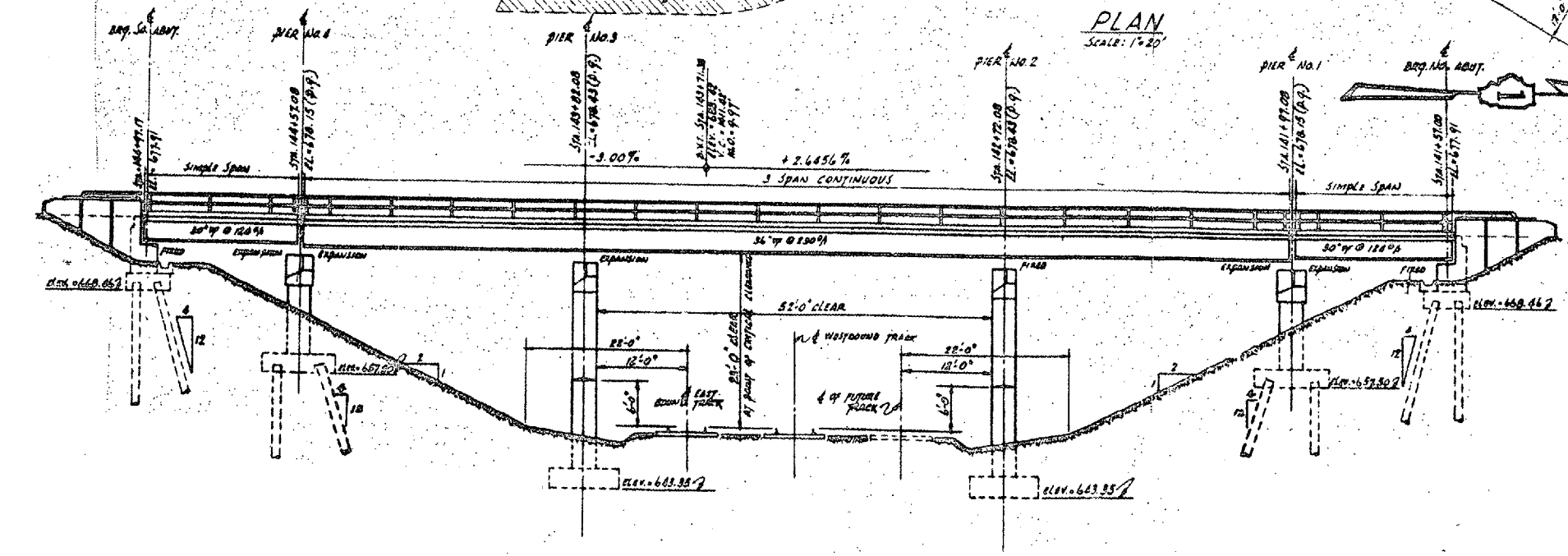
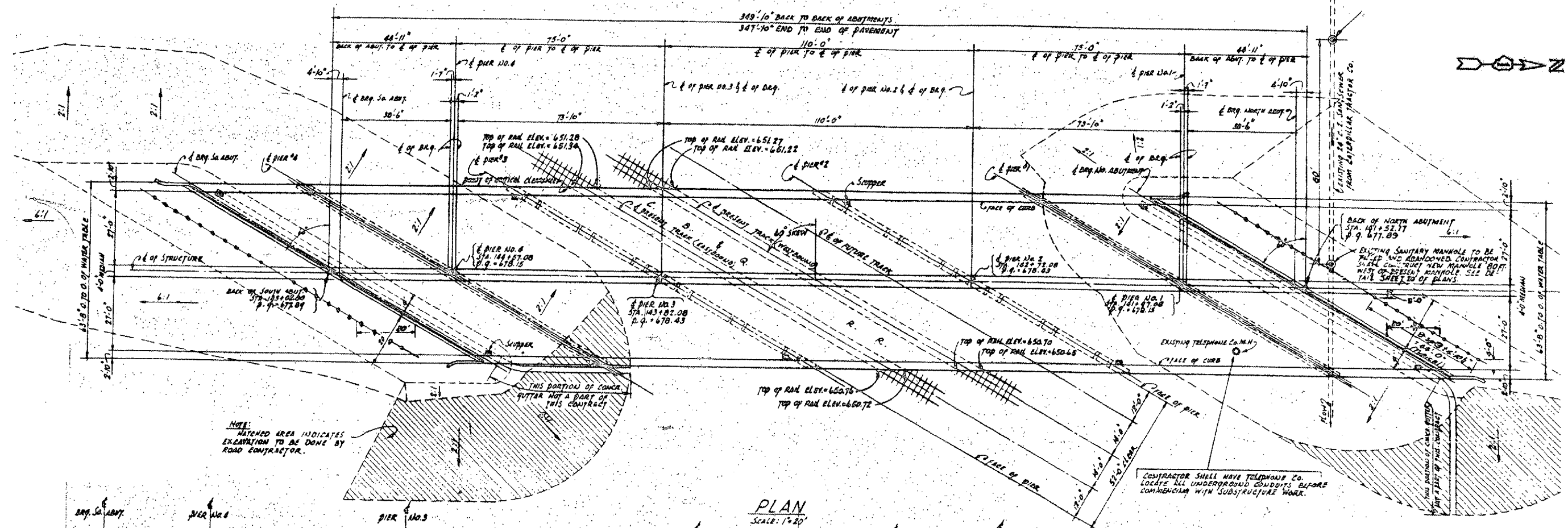


ROUTE	SECTION	COUNTY	TOTAL SHEETS	SHEET NUMBER
FAP 860 AND 349	2006-007 I	KANE & KENDALL	38	5

CONTRACT NO. 60B26

SHEET 1 OF 4



**FOR  
INFORMATION  
ONLY**

ILLINOIS DEPARTMENT OF TRANSPORTATION  
LOCATION 1  
PLAN & ELEVATION  
IL 31 OVER BNSF RR  
SN 047-0006