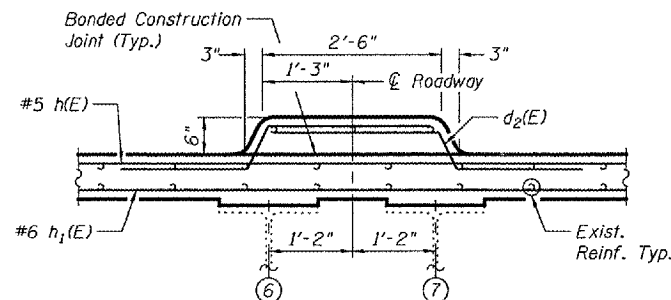
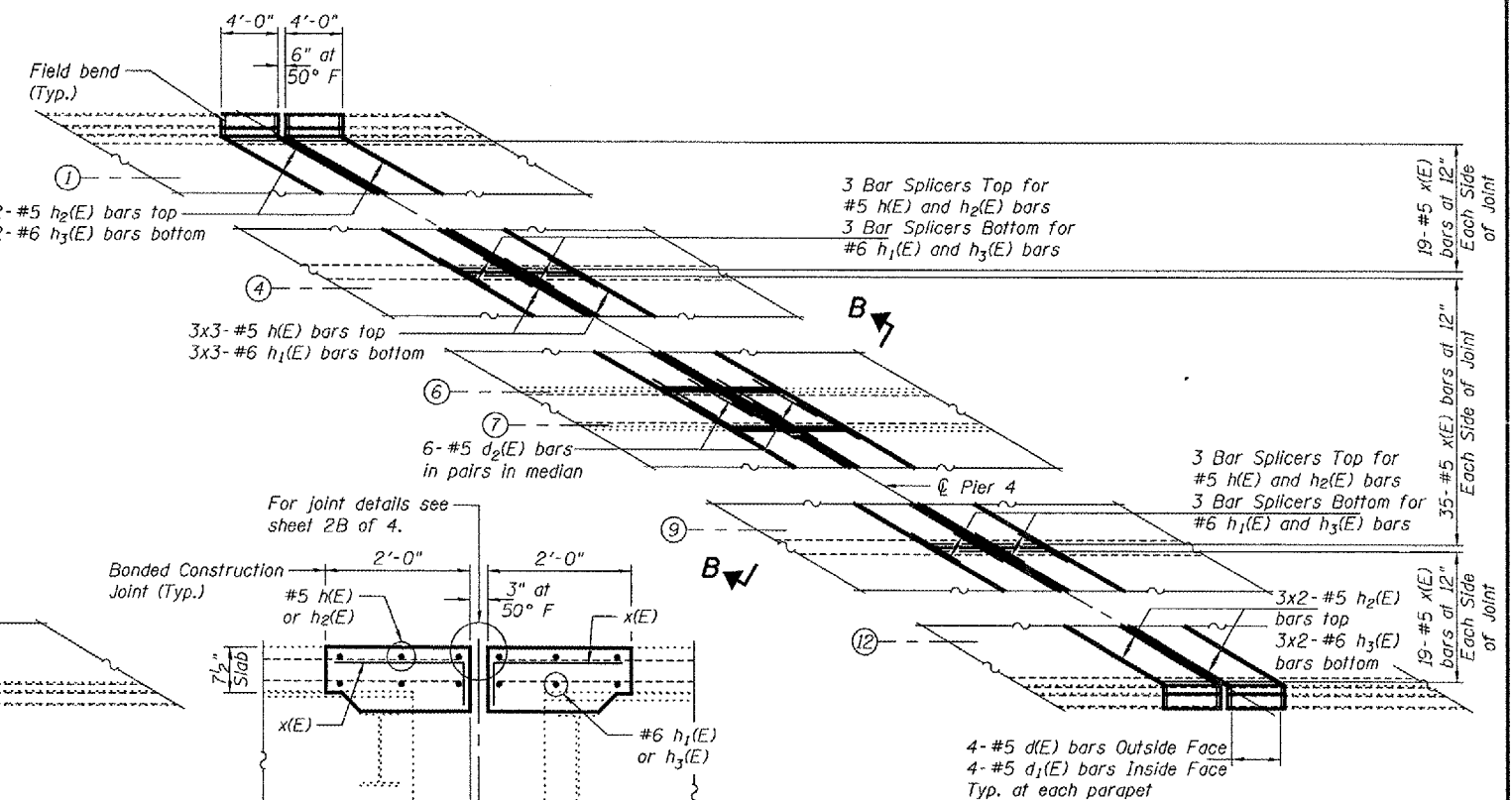
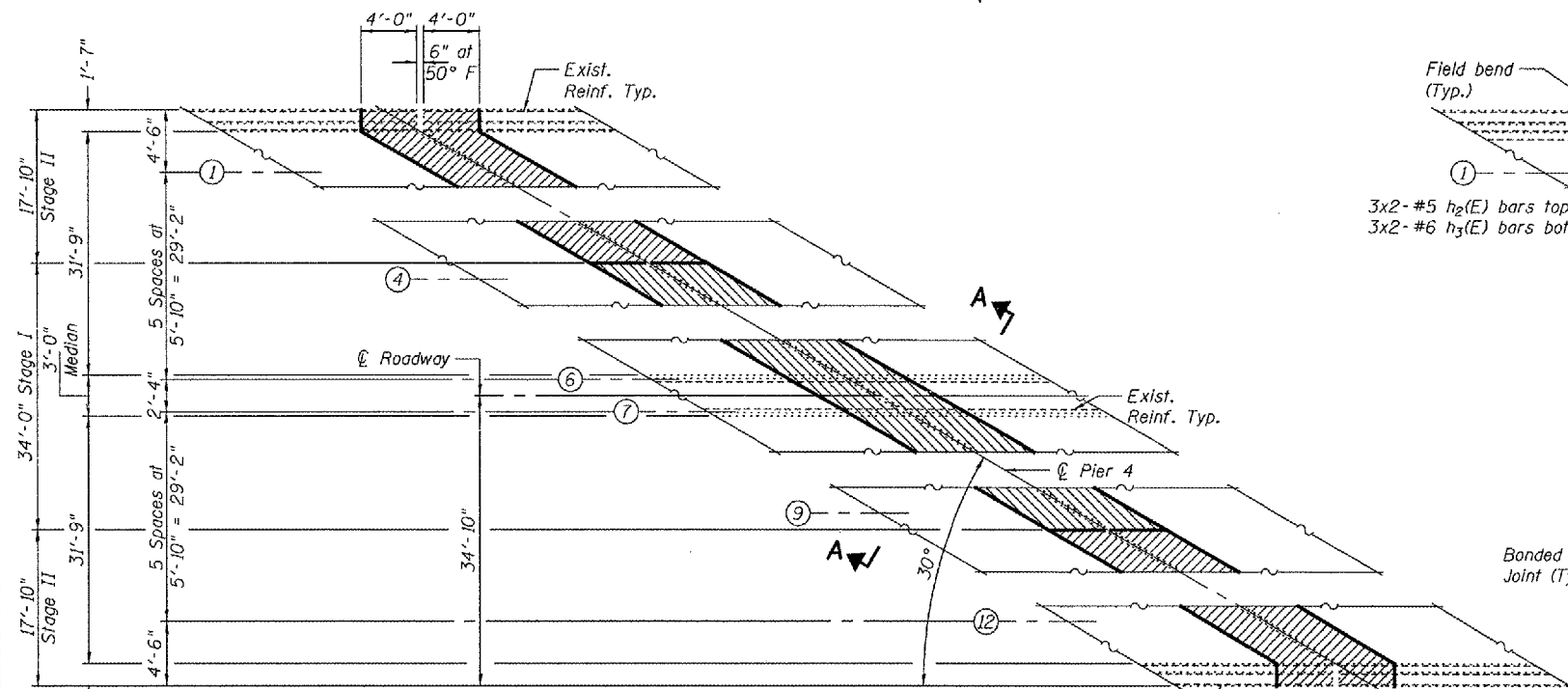


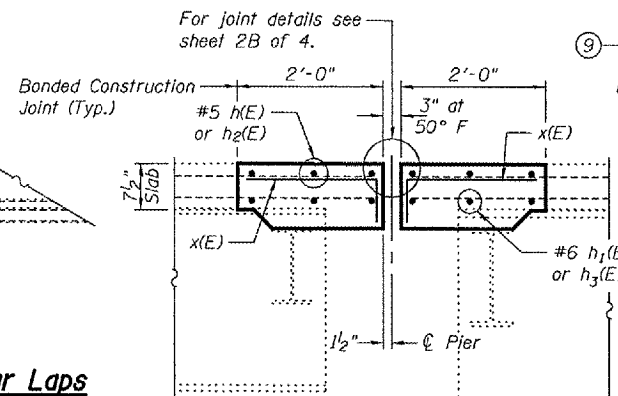
STATE OF ILLINOIS
DEPARTMENT OF TRANSPORTATION

ROUTE NO.	SECTION	COUNTY	TOTAL SHEETS	SHEET NO.	SHEET NO. 3A
		Kendall	38	7A	4 SHEETS
Contract Number: ---					



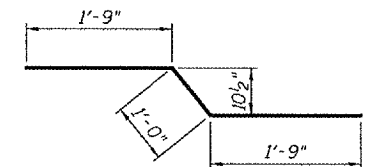
PARTIAL REMOVAL PLAN

Min Bar Laps
#5 = 2'-2"
#6 = 2'-7"

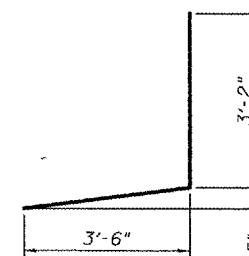


SECTION B-B
(Dims at Rt. L's to joint)

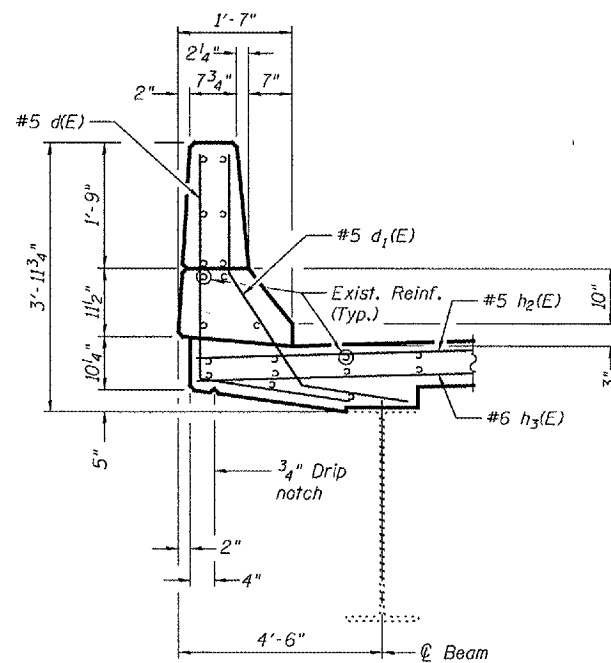
PARTIAL PIER PLAN



Bar d2(E)



Bar d(E)

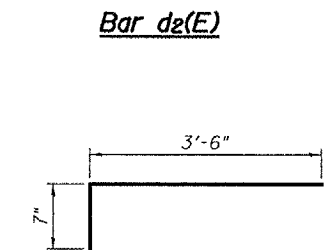


TYPICAL PARAPET SECTION

BILL OF MATERIAL

Bar	No.	Size	Length	Shape
d(E)	16	#5	6'-8"	L
d1(E)	16	#5	3'-11"	L
d2(E)	12	#5	4'-6"	L
h(E)	18	#5	24'-1"	—
h1(E)	18	#6	24'-4"	—
h2(E)	24	#5	18'-11"	—
h3(E)	24	#6	19'-2"	—
x(E)	146	#5	4'-1"	L
Bar Splicers		Each	24	
Reinforcement Bars, Epoxy Coated		Pound	3,130	
Concrete Superstructure		Cu. Yd.	18.3	
Concrete Removal		Cu. Yd.	18.3	
Neoprene Expansion Joint 4"		Foot	135	

Bars indicated thus 1x2-#5 etc. indicates 1 line of bars with 2 lengths per line.



Bar x(E)

PIER 4 EXPANSION JOINT DETAILS
IL 31 OVER BNSF RR
KENDALL COUNTY
SN 047-0006

DESIGNED	
CHECKED	
DRAWN	Drew Christopher
CHECKED	