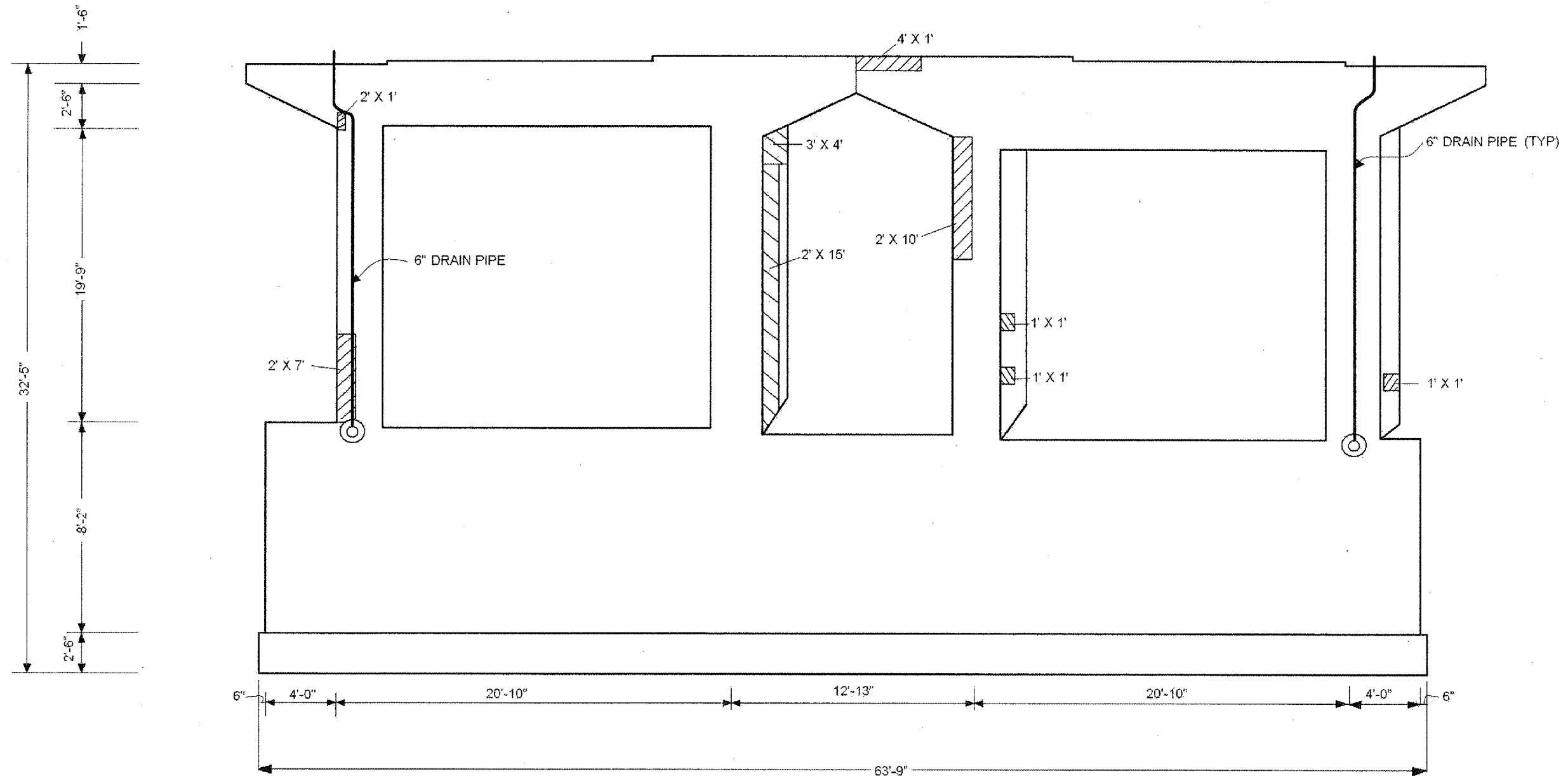


ROUTE	SECTION	COUNTY	TOTAL SHEETS	SHEET NUMBER
FAP 860 AND 349	2006-007 I	KANE & KENDALL	38	19


CONTRACT NO. 60B26

SHEET 11 OF 27



2 OF 2

 — STRUCTURAL REPAIR OF CONCRETE ($\leq 5"$)
 WEST FACE: 34.5 SQ. FT.
 EAST FACE: 85.0 SQ. FT.
 TOTAL: 119.5 SQ. FT.

 REPAIR 2' OF PIPE. INSTALL 90° ELBOW @ EACH LOCATION = 2 EACH @ 4'
 (INCLUDED IN COST OF CLEANING DRAINAGE SYSTEM)
 SEE SHEET 27 OF 27

PIER 2 EAST FACE
(LOOKING WEST)

ILLINOIS DEPARTMENT OF TRANSPORTATION
LOCATION 2

PIER 2 EAST FACE
US 30 OVER IL 31 & BNSF RR
SN 045-0039