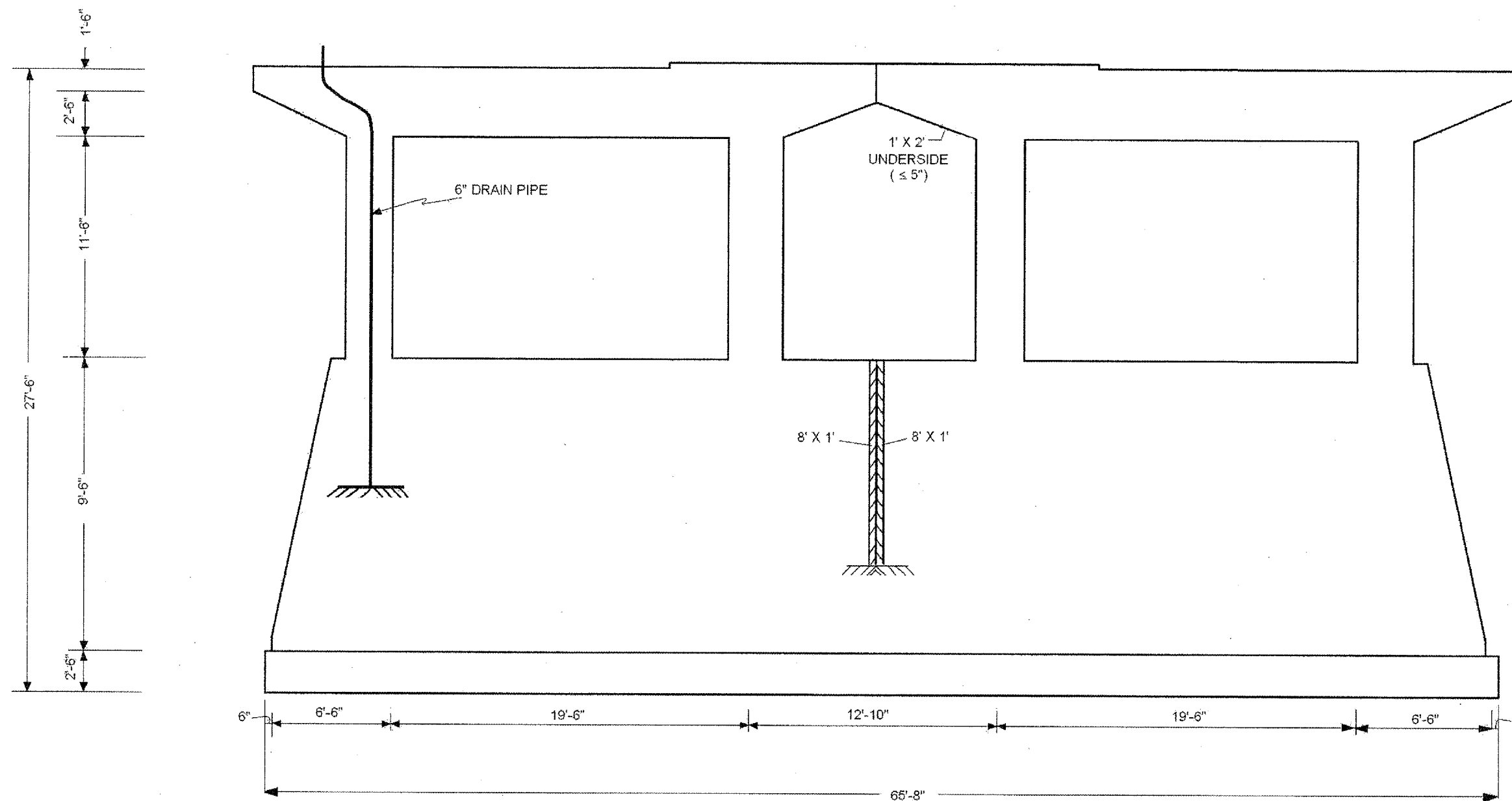


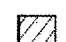
8ROUTE	SECTION	COUNTY	TOTAL SHEETS	SHEET NUMBER
FAP 860 AND 349	2006-007 I	KANE & KENDALL	38	30

CONTRACT NO. 60B26

SHEET 22 OF 27



2 OF 2


STRUCTURAL REPAIR OF CONCRETE (≤ 5")
 WEST FACE: 8.0 SQ. FT.
 EAST FACE: 18.0 SQ. FT.
 TOTAL: 26.0 SQ. FT.

PIER 8 EAST FACE
 (LOOKING WEST)

ILLINOIS DEPARTMENT OF TRANSPORTATION
LOCATION 2

PIER 8 EAST FACE
US 30 OVER IL 31 & BNSF RR
SN 045-0039