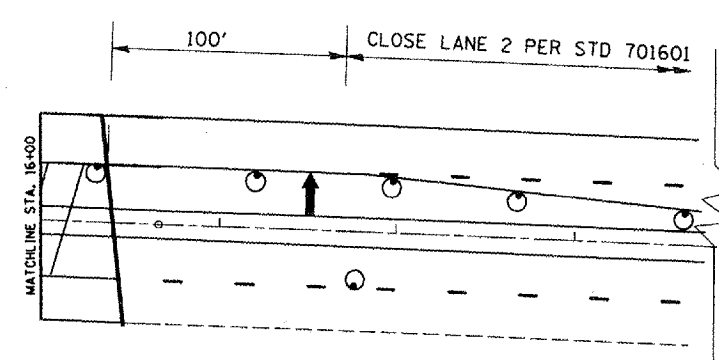
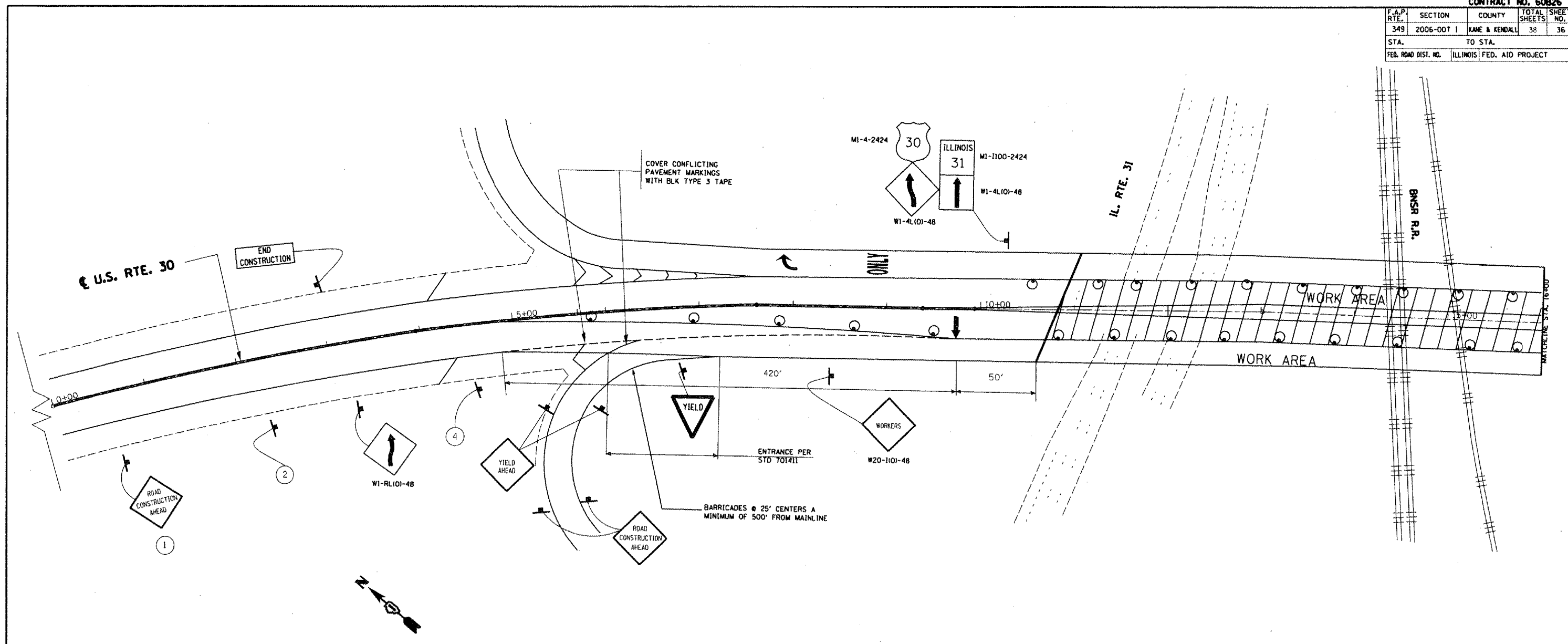
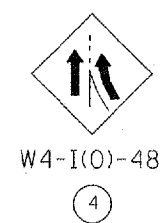


F.A.P. RTE.	SECTION	COUNTY	TOTAL SHEETS	SHEET NO.
349	2006-007 I	KANE & KENDALL	38	36
STA.		TO STA.		
FED. ROAD DIST. NO.	ILLINOIS FED. AID PROJECT			



WORK ZONE	W2-III5(0)-3618
SPEED LIMIT	R2-1-3648
35	
BEGINS	W2-III3(0)-3612
MINIMUM	R2-1106-3618



**LEGEND**

- ARROW BOARD
- DRUM OR BARRICADE
- SIGN
- WORK AREA
- TYPE II BARRICADE, DRUM OR VERTICAL BARRICADE WITH STEADY BURNING MONODIRECTIONAL LIGHTS

REVISIONS	
NAME	DATE

ILLINOIS DEPARTMENT OF TRANSPORTATION  
**LOC 2**  
**US ROUTE 30 OVER**  
**IL 31 & BNSF R.R.**  
**TRAFFIC STAGING PLAN**  
**STAGE I**

SCALE: VERT. 1"=50'  
 HORIZ. 1"=50'  
 DATE 10/2/2007

DRAWN BY  
 CHECKED BY

TYPE III TAPE & ITS REMOVAL & TRAFFIC CONTROL SHOWN ON THIS SHEET ARE INCLUDED IN THE COST OF "TRAFFIC CONTROL & PROTECTION (SPECIAL)"

PLOT DATE: 10/2/2007  
 FILE NAME: c:\p\projects\103186\loc2\stage1.dwg  
 USER NAME: michel1r