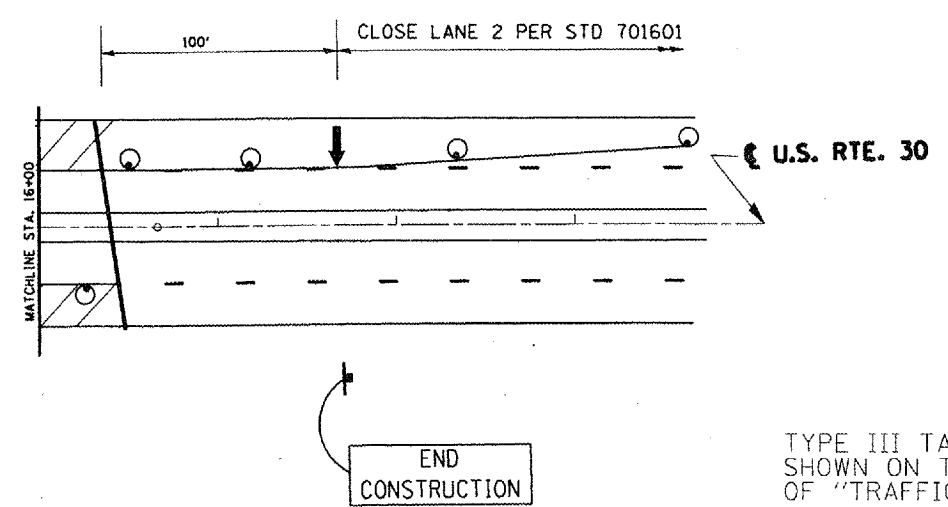
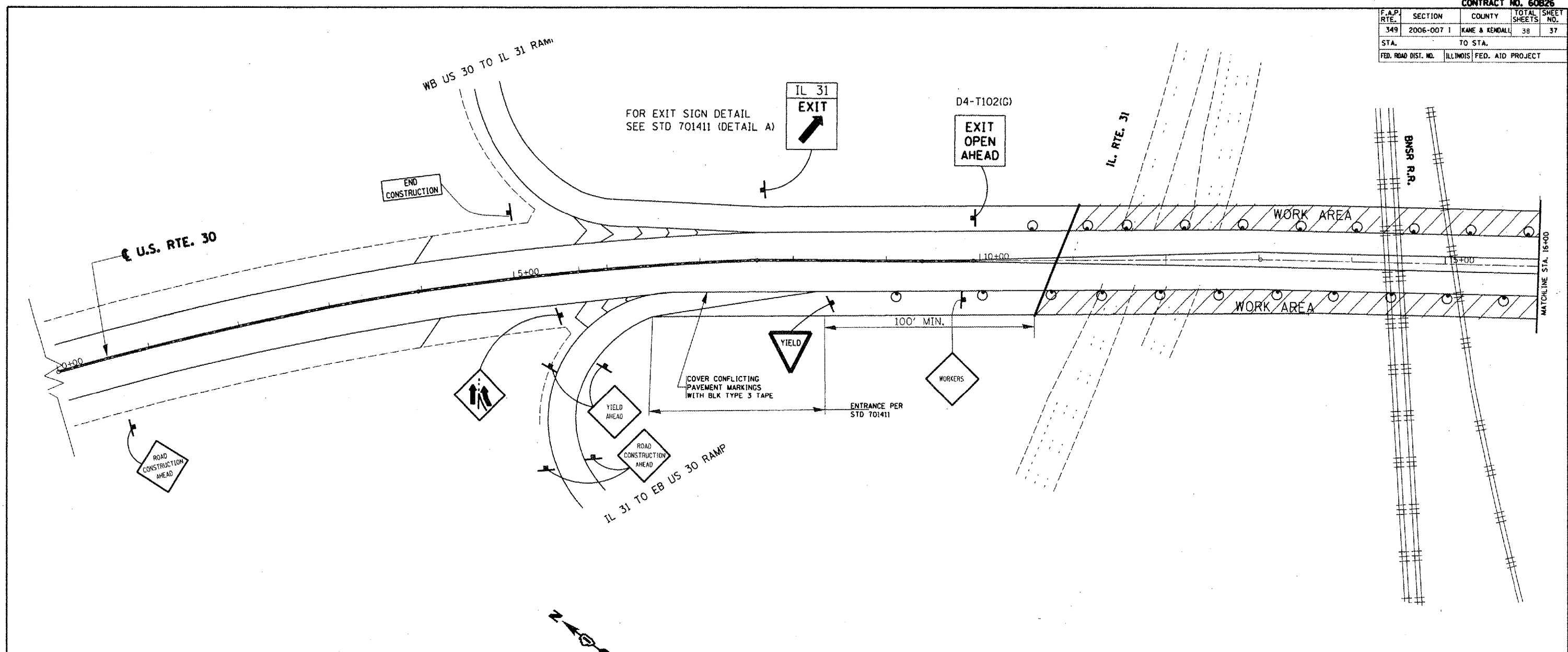


| F.A.P. RTE.         | SECTION    | COUNTY                    | TOTAL SHEETS | SHEET NO. |
|---------------------|------------|---------------------------|--------------|-----------|
| 349                 | 2006-007 I | KANE & KENDALL            | 38           | 37        |
| STA.                |            | TO STA.                   |              |           |
| FED. ROAD DIST. NO. |            | ILLINOIS FED. AID PROJECT |              |           |



**LEGEND**

- ARROW BOARD
- DRUM OR BARRICADE
- SIGN
- WORK AREA
- TYPE II BARRICADE, DRUM OR VERTICAL BARRICADE WITH STEADY BURNING MONODIRECTIONAL LIGHTS

| REVISIONS |      |
|-----------|------|
| NAME      | DATE |
|           |      |
|           |      |
|           |      |
|           |      |
|           |      |
|           |      |
|           |      |
|           |      |
|           |      |
|           |      |

ILLINOIS DEPARTMENT OF TRANSPORTATION  
**LOC 2**  
**US ROUTE 30 OVER**  
**IL 31 & BNSF R.R.**  
**TRAFFIC STAGING PLAN**  
**STAGE II**

SCALE: VERT. 1"=50'  
 HORIZ. 1"=50'  
 DATE 10/2/2007

DRAWN BY  
 CHECKED BY

TYPE III TAPE & ITS REMOVAL & TRAFFIC CONTROL SHOWN ON THIS SHEET ARE INCLUDED IN THE COST OF "TRAFFIC CONTROL & PROTECTION (SPECIAL)"

PLOT DATE 10/2/2007  
 FILE NAME C:\Users\james\Documents\10110606\10110606.dgn  
 USER NAME james