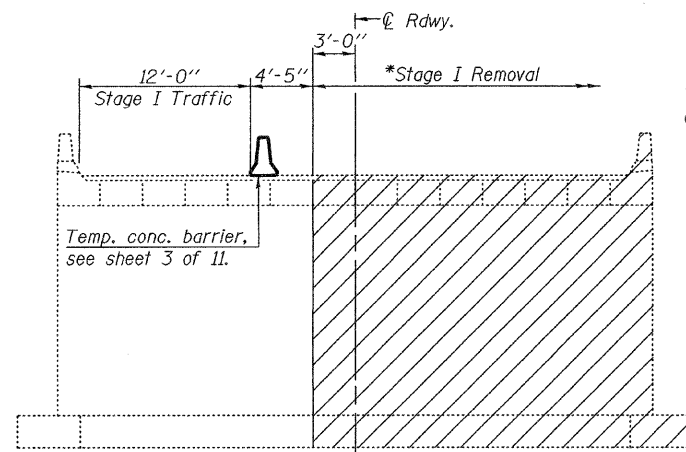


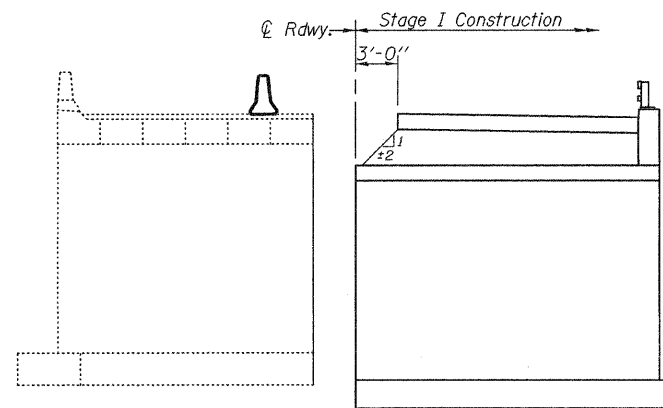
STATE OF ILLINOIS  
DEPARTMENT OF TRANSPORTATION

ROUTE NO.	SECTION	COUNTY	TOTAL SHEETS	SHEET NO.	SHEET NO. 2
FAP 330	104B-3-BR	WILL	42	2-1	11 SHEETS
FED. ROAD DIST. NO. 7	ILLINOIS	FED. AID PROJECT	Contract No. 60B80		

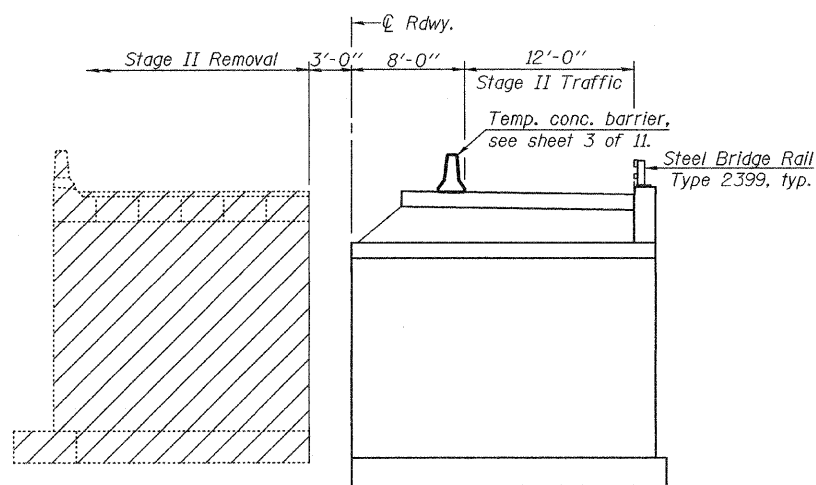


\*See General Note on sheet 1 of 11 regarding excavation behind existing abutment walls.

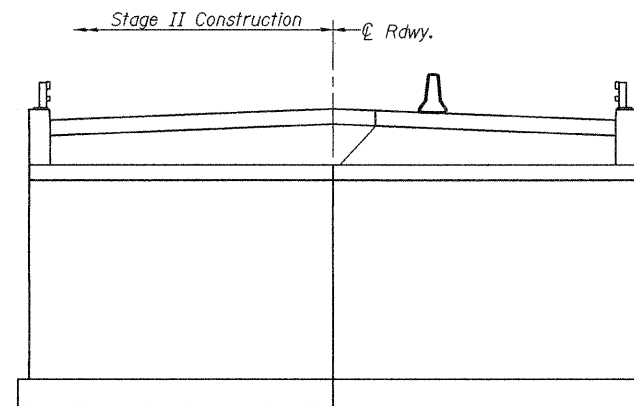
**STAGE I REMOVAL**



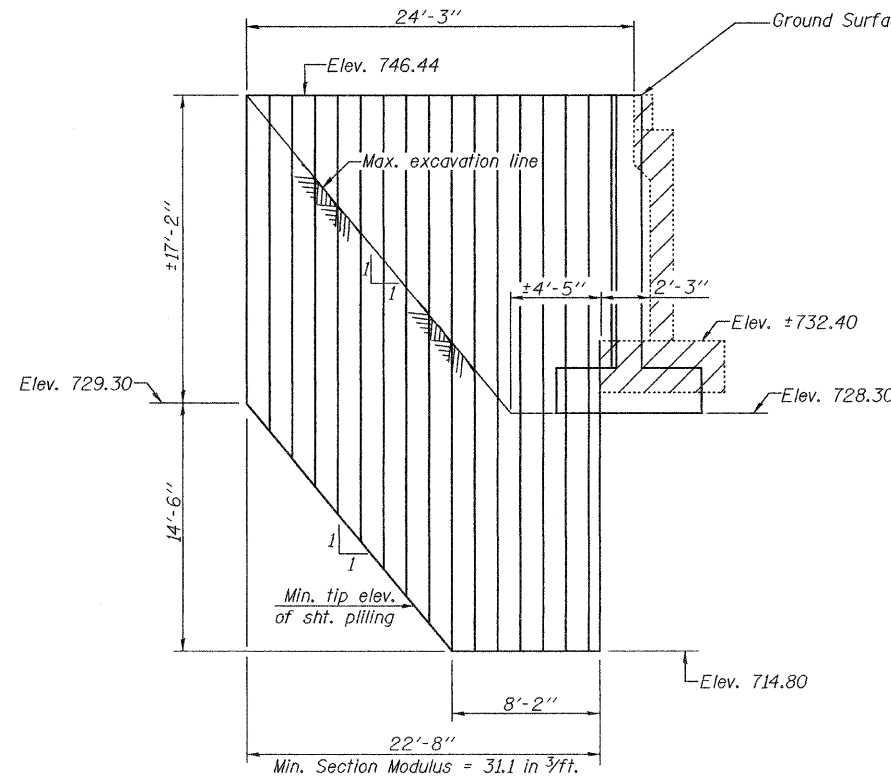
**STAGE I CONSTRUCTION**



**STAGE II REMOVAL**

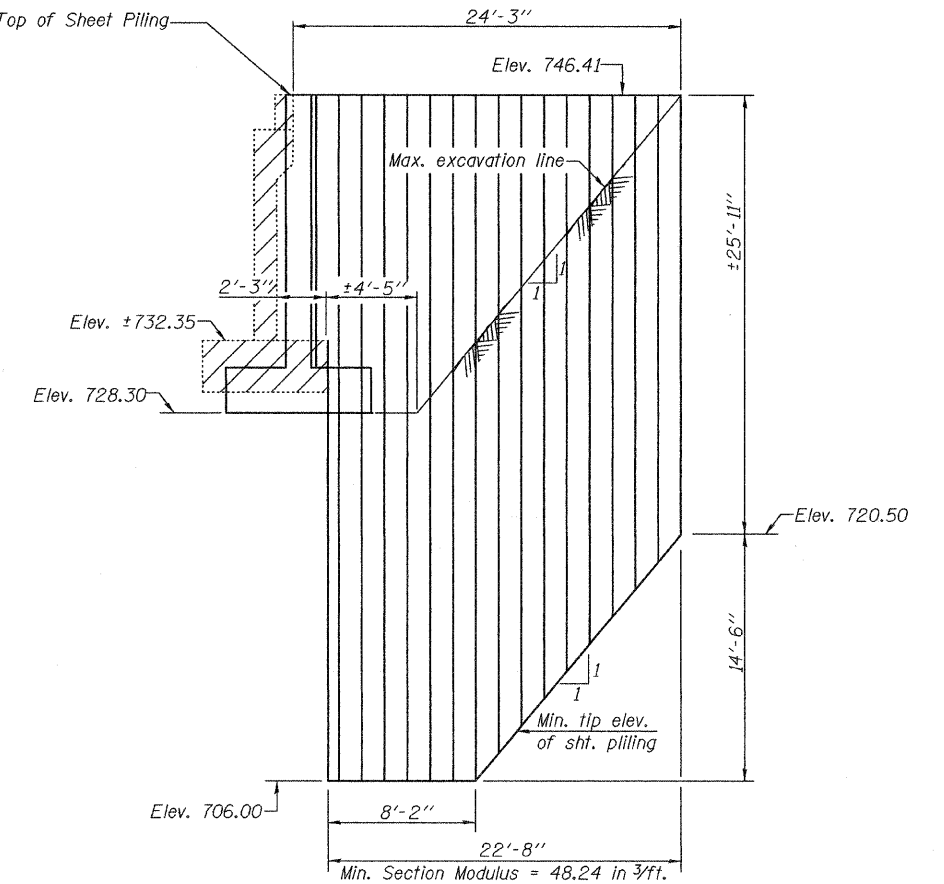


**STAGE II CONSTRUCTION**



**TEMPORARY SHEET PILING AT NORTH END**

Notes: Hatched areas indicate removal of existing structures.  
For quantity of temporary concrete barrier, See Roadway Plans.  
All staging cross sections are looking upstation.



**TEMPORARY SHEET PILING AT SOUTH END**

Notes: If the Contractor chooses to alter the temporary cantilevered sheet piling design requirements shown on the plans, a design submittal including plan details and calculations will be required for review and acceptance by the Engineer.  
The Contractor shall connect the first sheet to the existing abutment wall to ensure stability of sheets driven to the top of the existing footing. This connection shall be reviewed and accepted by the Engineer and included in the cost for Temporary Sheet Piling.

DESIGNED	Dhruv P. Nariehwala
CHECKED	Stephen M. Ryan
DRAWN	h.t. duong
CHECKED	DPN/SMR

EXAMINED	November 20 2007
PASSED	Thomas J. Domagalala ENGINEER OF BRIDGE DESIGN
	Ralph E. Anderson ENGINEER OF BRIDGES AND STRUCTURES

**STAGE CONSTRUCTION DETAILS**  
**F.A.P. RT. 330 SEC. 104B-3-BR**  
**WILL COUNTY**  
**STATION 149+06.00**  
**STRUCTURE NO. 099-4649**