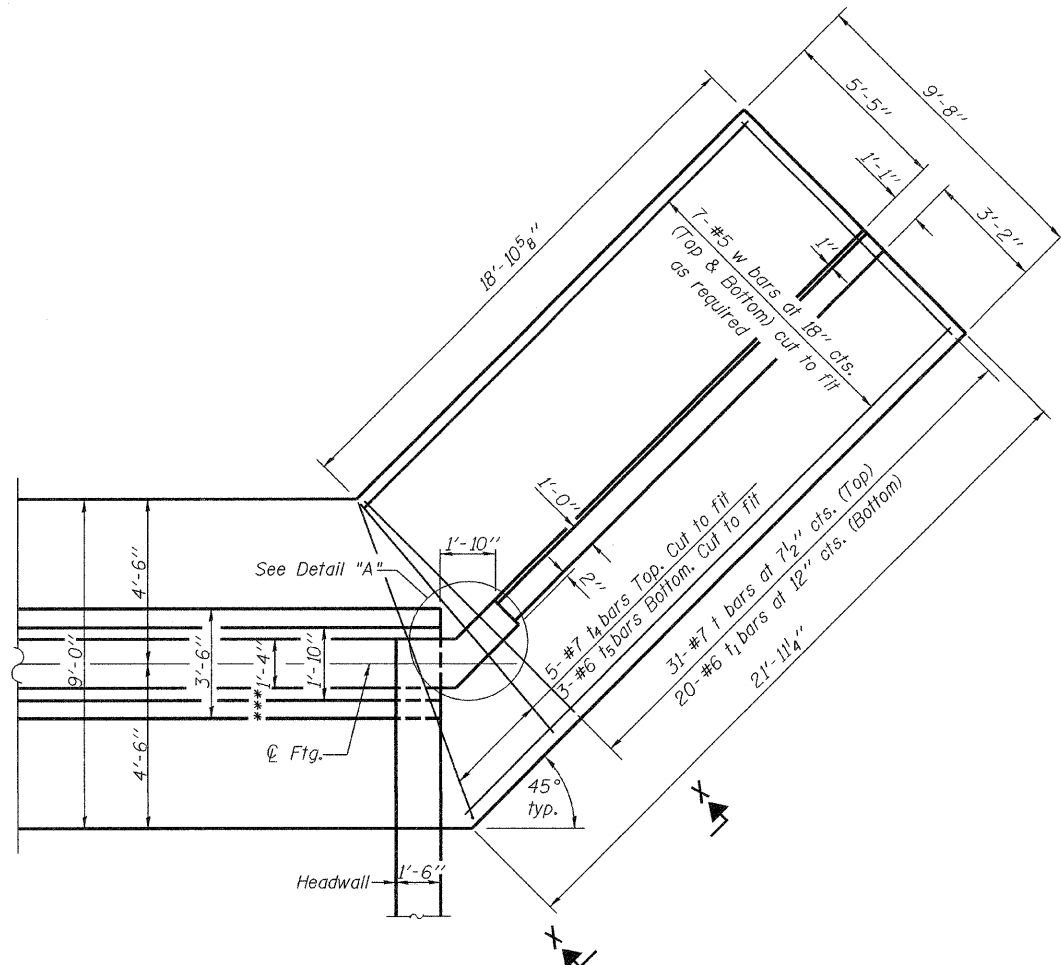


STATE OF ILLINOIS  
DEPARTMENT OF TRANSPORTATION

ROUTE NO.	SECTION	COUNTY	TOTAL SHEETS	SHEET NO.	SHEET NO. 5 11 SHEETS
FAP 330	104B-3-BR	WILL	42	24	
FED. ROAD DIST. NO. 7	ILLINOIS	FED. AID PROJECT	Contract No. 60B80		

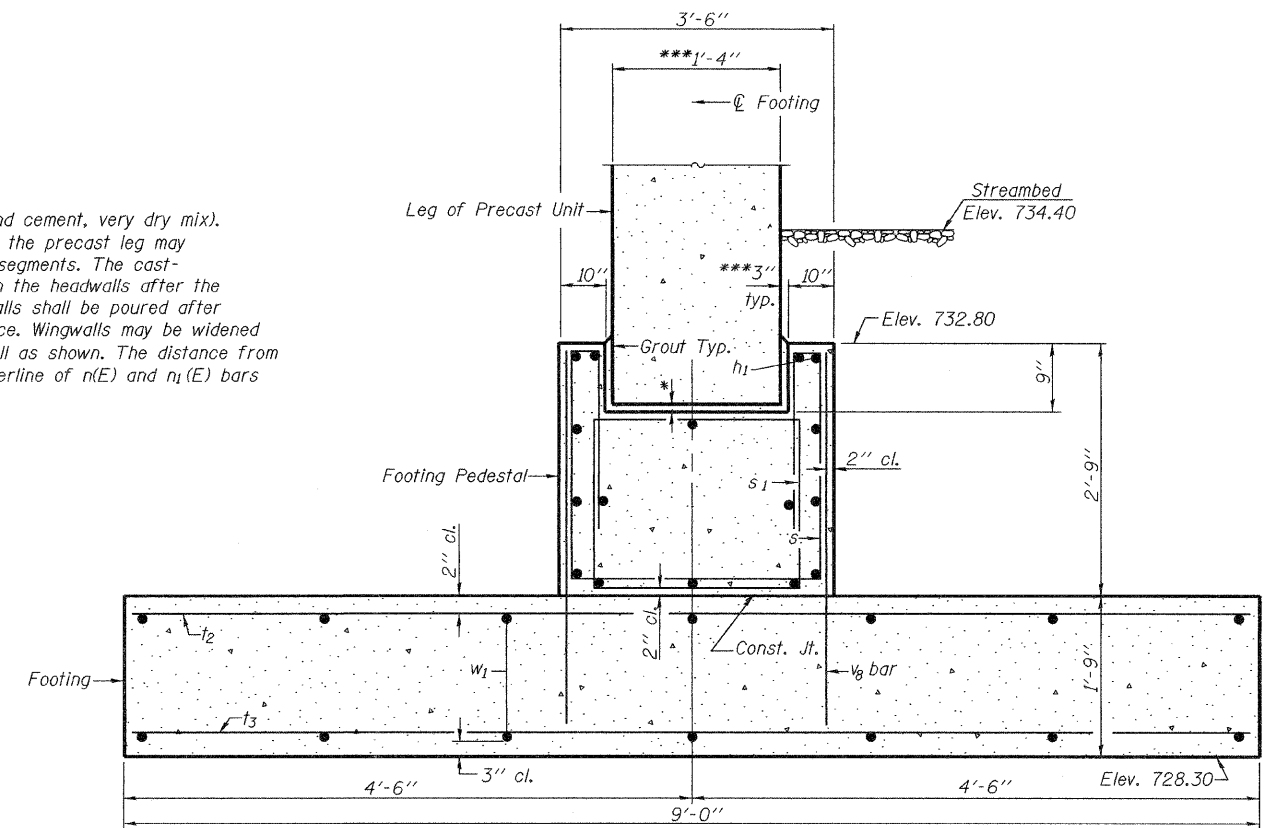


**CORNER DETAIL**

(Northeast corner shown; Southwest corner similar by 180° rotation, Northwest corner similar by symmetry; Southeast corner similar by 180° rotation & symmetry)

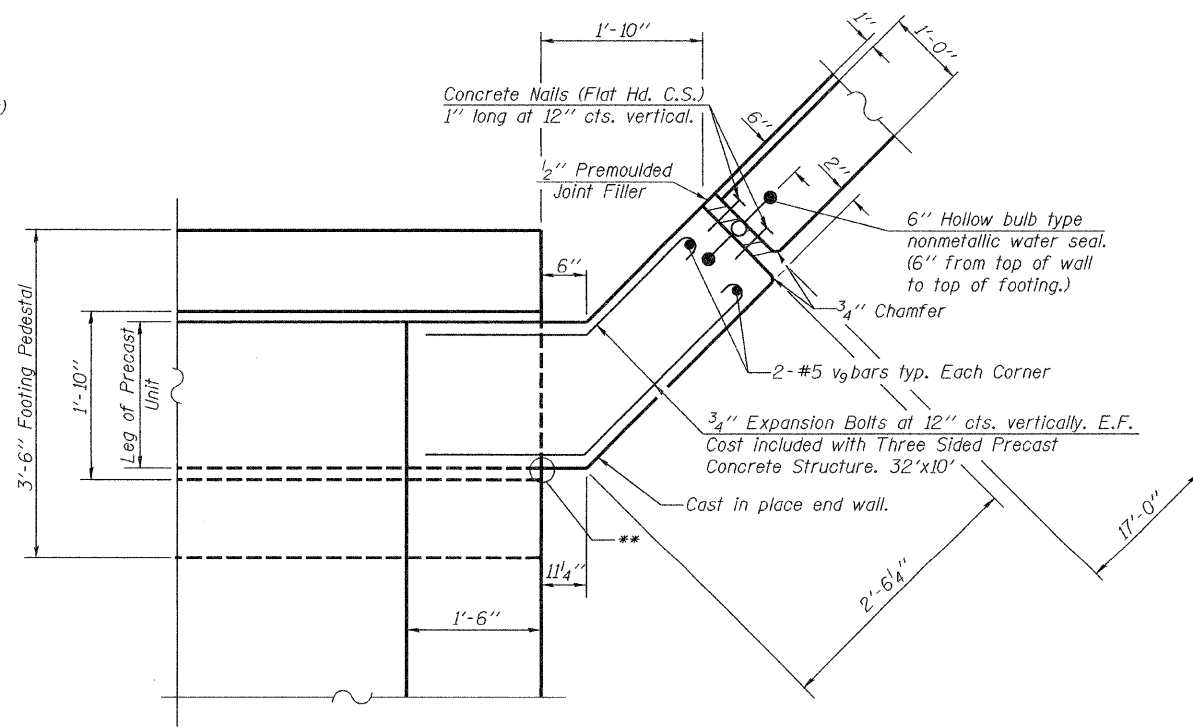
\*\*\*Varies depending on thickness of leg of Precast Unit.

Notes: \*1" initial grout (2:1 sand and portland cement, very dry mix).  
\*\*The location of the inside corner of the precast leg may vary due to tolerances in the precast segments. The cast-in-place end walls shall be poured with the headwalls after the precast units are in place. The wingwalls shall be poured after the headwalls and end walls are in place. Wingwalls may be widened up to 1" to align them with the end wall as shown. The distance from the front face of the wingwall to centerline of n(E) and n1(E) bars shall not be less than 11".  
For View X-X see sheet 6 of 11.



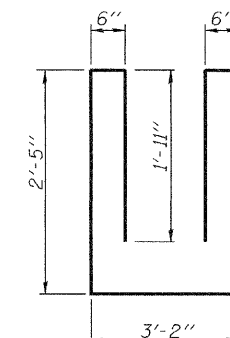
**SECTION A-A**

Maximum Applied Service Bearing Pressure (Qmax.) = 4.94 ksf.

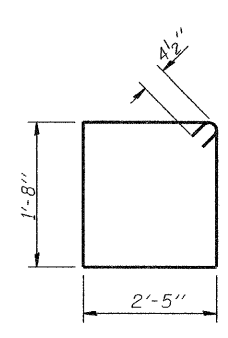


**DETAIL A**

w3 bars are billed on sheet 7 of 11.



**BAR s(E)**



**BAR s1(E)**

DESIGNED	Dhruv P. Narieiwala
CHECKED	Stephen M. Ryan
DRAWN	h.t. duong
CHECKED	DPN/SMR

EXAMINED	Thomas J. Domagala ENGINEER OF BRIDGE DESIGN
PASSED	Ralph E. Anderson ENGINEER OF BRIDGES AND STRUCTURES

**FOOTING DETAILS**  
F.A.P. RT. 330 SEC. 104B-3-BR  
WILL COUNTY  
STATION 149+06.00  
STRUCTURE NO. 099-4649