

F.A.U. RTE.	SECTION	COUNTY	TOTAL SHEETS	SHEET NO.
1312	0707-B	COOK	80	14

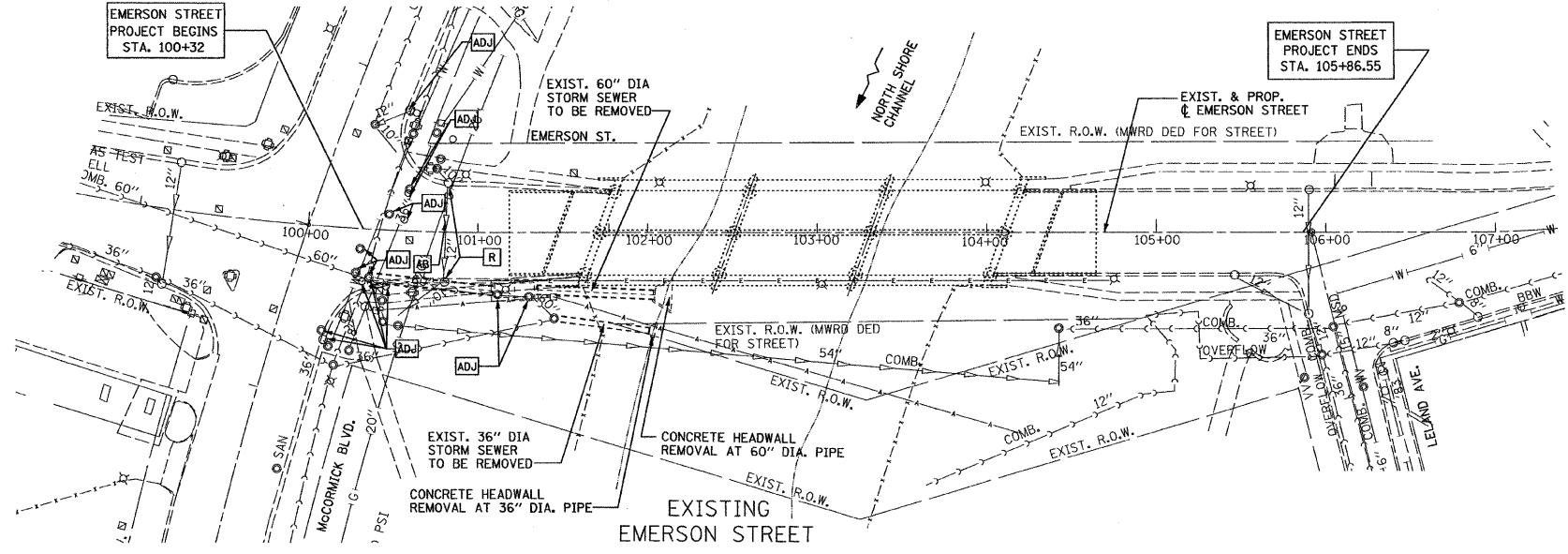
STA. TO STA.  
ILLINOIS FED. AID PROJECT

CONTRACT NO. 60B98

- PROPOSED STORM STRUCTURE
- PROPOSED STORM SEWER
- EXISTING STRUCTURE TO BE REMOVED
- EXISTING STORM SEWER TO BE ABANDONED
- EXISTING STRUCTURE TO BE ADJUSTED
- EXISTING STRUCTURE TO BE CLEANED

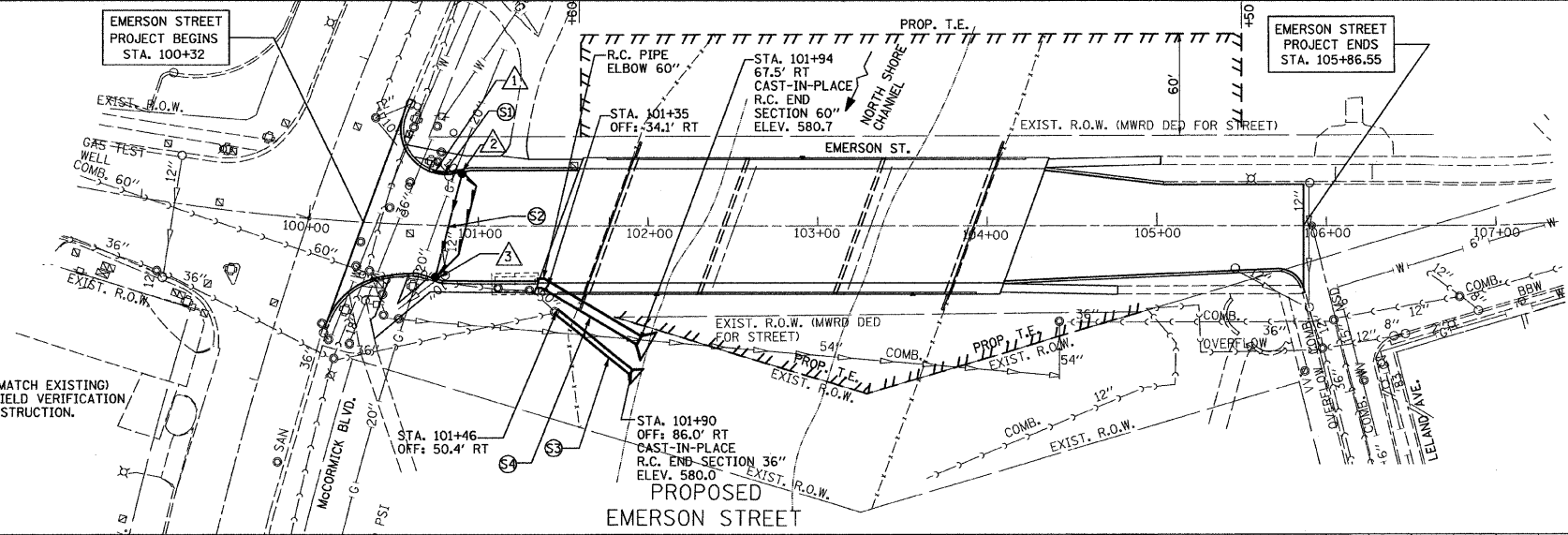
NOTE:  
SEE SHEET 3 OF 32 OF STRUCTURAL PLANS FOR ADDITIONAL DETAILS AT 60" Ø SEWER.

PLAN	SURVEYED	DATE
NO.	BY	
	NOTED	
	REVISIONS	
	CHECKED	
	CADD FILE NAME	



- LEGEND:
- PROPOSED MANHOLE
  - PROPOSED CATCH BASIN
  - PROP. INLET
  - PROPOSED STORM SEWER
  - PROPOSED PIPE UNDERDRAINS FABRIC LINED TRENCH 4"
  - PROPOSED FLARED END SECTION
  - EXISTING MANHOLE
  - EXISTING CATCH BASIN
  - EXISTING INLET
  - EXISTING FLARED END SECTION
  - EXISTING STORM SEWER

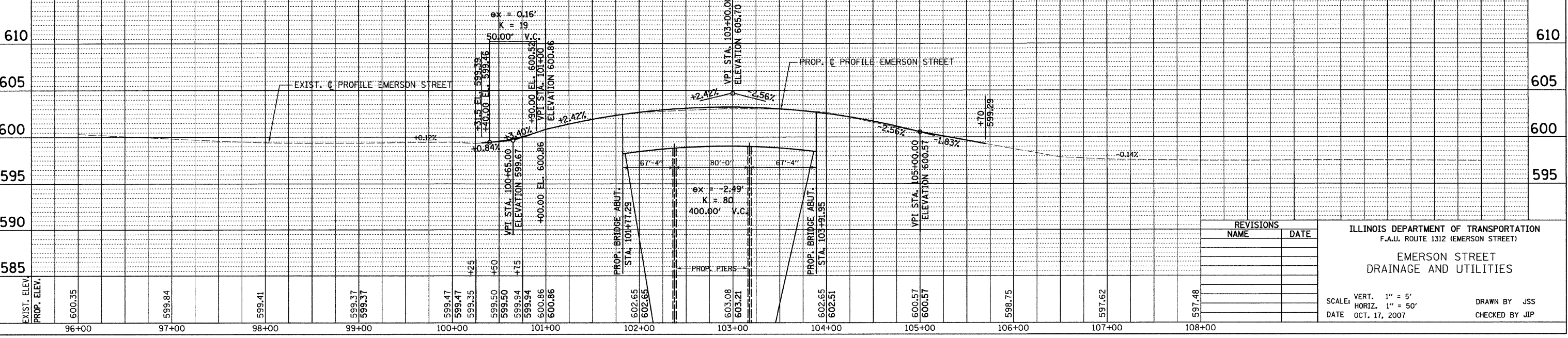
- STA. 100+75, 30.5' LT INLET TYPE A, TYPE 23, F&G RIM ELEV. = 599.33 INV. ELEV. = 597.15 (EAST)
- STA. 100+75, 31.4' RT CATCH BASIN, TYPE A, 4' DIA., TYPE 23, F&G RIM ELEV. = 599.28 INV. ELEV. = 596.31 (NORTH) = 596.21\* (SOUTH, MATCH EXISTING) \* SUBJECT TO FIELD VERIFICATION PRIOR TO CONSTRUCTION.
- STA. 100+90, 31.5' LT CATCH BASIN, TYPE A, 4' DIA., TYPE 23, F&G RIM ELEV. = 599.86 INV. ELEV. = 597.05 (WEST) = 596.95 (SOUTH)



- STORM SEWERS, CLASS A, TYPE 1, 12" @ 1.0% L = 11 FT TRENCH BACKFILL = 1.5 CU YD
  - STORM SEWERS, CLASS A, TYPE 1, 12" @ 1.0% L = 64 FT TRENCH BACKFILL = 8.5 CU YD
  - \* STORM SEWERS, TYPE 4, REINFORCED CONCRETE CULVERT, STORM DRAIN, AND SEWER PIPE, CLASS IV, 36" L = 57 FT
  - \* STORM SEWERS, TYPE 4, REINFORCED CONCRETE CULVERT, STORM DRAIN, AND SEWER PIPE, CLASS IV, 60" L = 68 FT
- \* ALL LABOR AND MATERIALS REQUIRED FOR THE CONNECTION OF THE PROPOSED STORM SEWER TO THE EXISTING STRUCTURE IS INCLUDED IN THE STORM SEWER PAY ITEM.

NOTE:  
SEE SHEET 3 OF 32 OF STRUCTURAL PLANS FOR ADDITIONAL DETAILS AT 60" Ø SEWER.

PROFILE	SURVEYED	DATE
NO.	BY	
	NOTED	
	REVISIONS	
	CHECKED	
	CADD FILE NAME	



REVISIONS	
NAME	DATE

ILLINOIS DEPARTMENT OF TRANSPORTATION  
F.A.U. ROUTE 1312 (EMERSON STREET)

**EMERSON STREET  
DRAINAGE AND UTILITIES**

SCALE: VERT. 1" = 5'  
HORIZ. 1" = 50'

DATE OCT. 17, 2007

DRAWN BY JSS  
CHECKED BY JIP