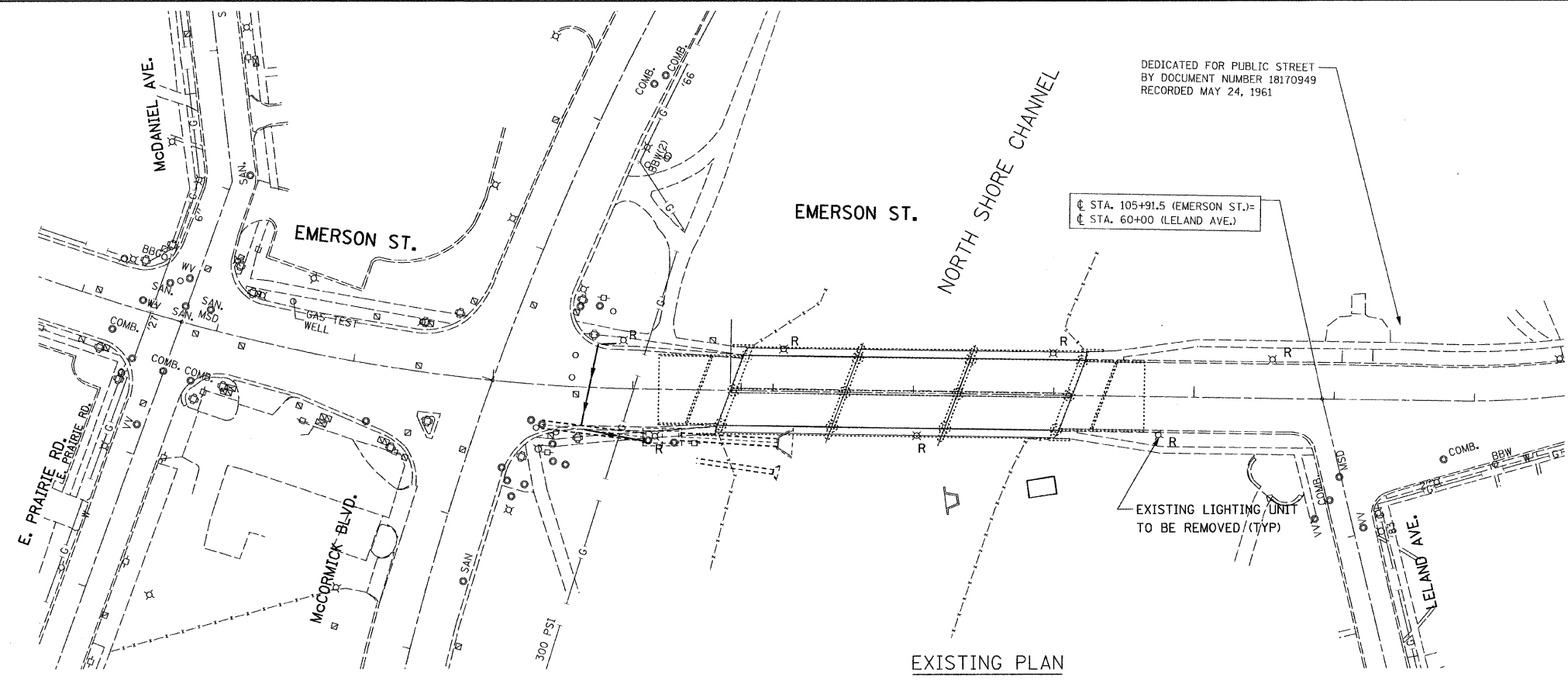


F.A.U. RTE.	SECTION	COUNTY	TOTAL SHEETS	SHEET NO.
1312	0707-B	COOK	80	30
STA.		TO STA.		
FED. ROAD DIST. NO.		ILLINOIS	FED. AID PROJECT	
CONTRACT NO. 60B98				



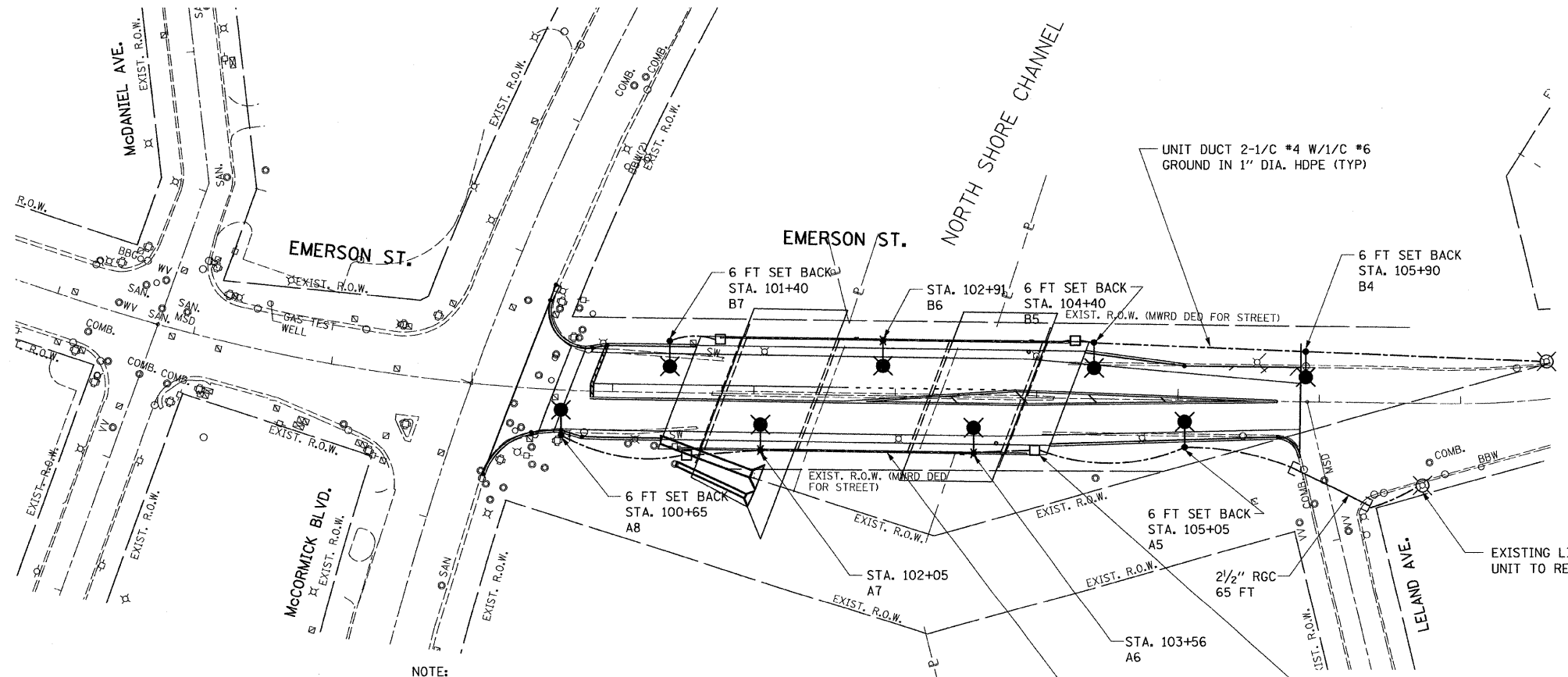
EXISTING PLAN

LEGEND:

⊗ R EXISTING LIGHTING UNIT TO BE REMOVED, SALVAGE

NOTE:

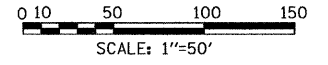
EXISTING LIGHTING UNITS SHALL BE DELIVERED TO THE CITY OF EVANSTON. THE CONTRACTOR SHALL CONTACT THOMAS TWIGG AT (847) 866-2922 FOR LOCATION.



PROPOSED PLAN

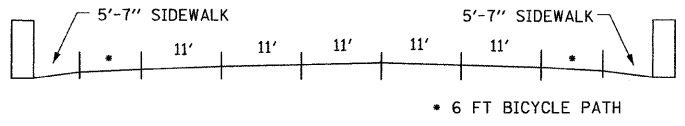
LEGEND:

- ⊗ EXISTING LIGHTING UNIT TO REMAIN, 400 W, 240 V
- PROPOSED LIGHTING UNIT ALUMINUM 30 FT. M.H. 6 FT DAVIT ARM 400W MV LUMINAIRE, 240V
- ⊙ PROPOSED LIGHTING UNIT ALUMINUM 30 FT. M.H. 6 FT DAVIT ARM 400 MV LUMINAIRE, 240V 400W MV LUMINAIRE ON BRIDGE STRUCTURE
- JUNCTION BOX NM EMBEDDED IN STRUCTURE 18" x 18" x 6"
- CONDUIT EMBEDDED IN STRUCTURE 2 1/2" PVC WITH 2-1/2" #4, 1/2" #6 GROUND
- - - UNIT DUCT 2-1/2" #4 W/ 1/2" #6 GROUND IN 1" DIA. HDPE



LTG-02

- NOTE:
- EXISTING LIGHTING CONTROLLER EAST ON HARTREY AVE.
 - SEE STRUCTURAL DRAWING 15 OF 32 FOR FOUNDATION IN BRIDGE STRUCTURE.
 - SEE STRUCTURAL DRAWING 32 OF 32 FOR CONDUIT AND JUNCTION BOX IN BRIDGE STRUCTURE TO COORDINATE LOCATION

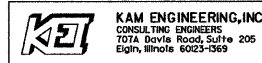


REVISIONS	
NAME	DATE

ILLINOIS DEPARTMENT OF TRANSPORTATION

EMERSON STREET OVER NORTH SHORE CHANNEL LIGHTING PLANS

SCALE: 1"=50'
DATE: 10-17-07
DRAWN BY: RV
DESIGNED BY: BL
CHECKED BY: KG



FILE# 10/17/2007