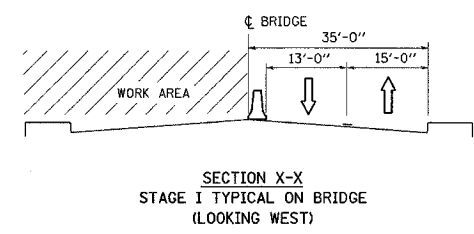
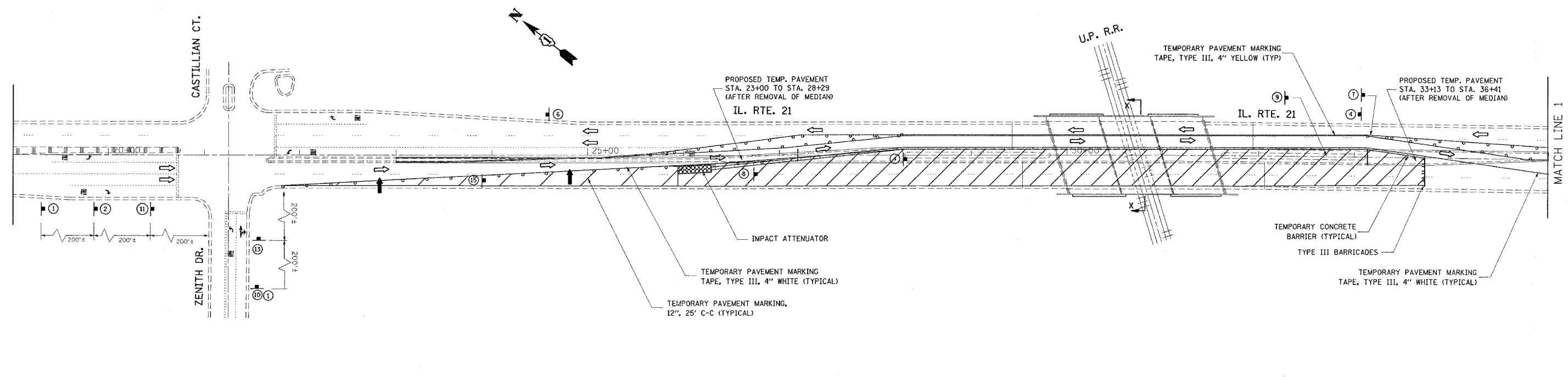
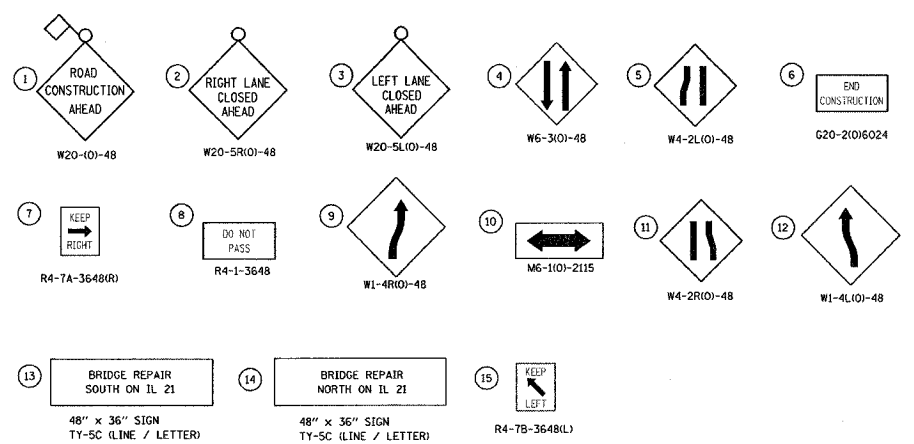


F.A.P. RTE.	SECTION	COUNTY	TOTAL SHEETS	SHEET NO.
374	211-K-V-X-B	COOK	38	7
STA.		TO STA.		
FED. ROAD DIST. NO. 1		ILLINOIS FED. AID PROJECT		

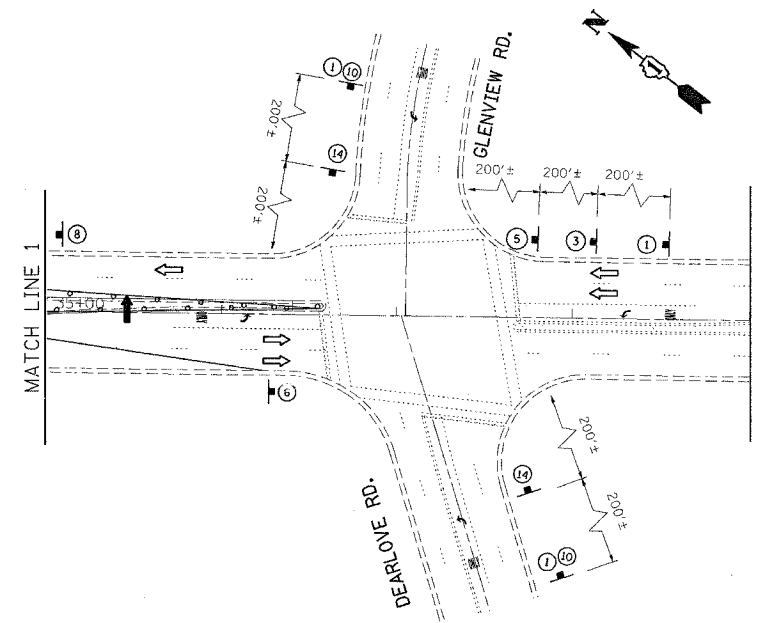
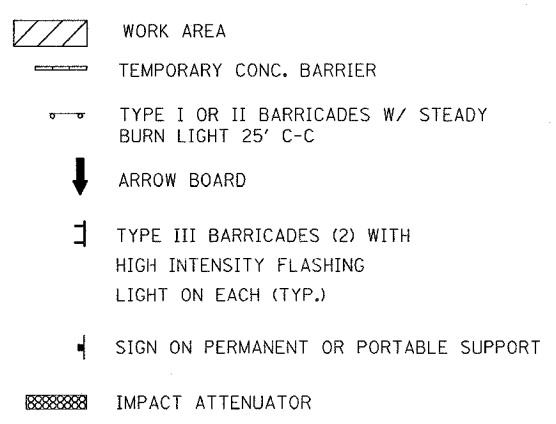


**NOTES:**

BARRICADES (TYPE I OR II) SHALL BE PLACED AT 50' C-C ON TANGENTS, 25' C-C ON TAPERS AND 12' C-C ON RADII  
 SIGNS SHALL BE PLACED IN ACCORDANCE TO TRAFFIC CONTROL STANDARDS



**LEGEND**



REVISIONS		ILLINOIS DEPARTMENT OF TRANSPORTATION STAGE I SUGGESTED TRAFFIC CONTROL PLAN IL. RTE. 21 (MILWAUKEE AVE.) OVER UNION PACIFIC RAILROAD S.N. 016-0243
NAME	DATE	

SCALE: VERT. 1"=50'  
 DATE:                      DRAWN BY:                      CHECKED BY:

PLOT DATE = 6/2/2007  
 FILE NAME = c:\p\projects\dl16487\design\_aa.dgn  
 PLOT SCALE = 50.0000 / IN.  
 USER NAME = bmc101