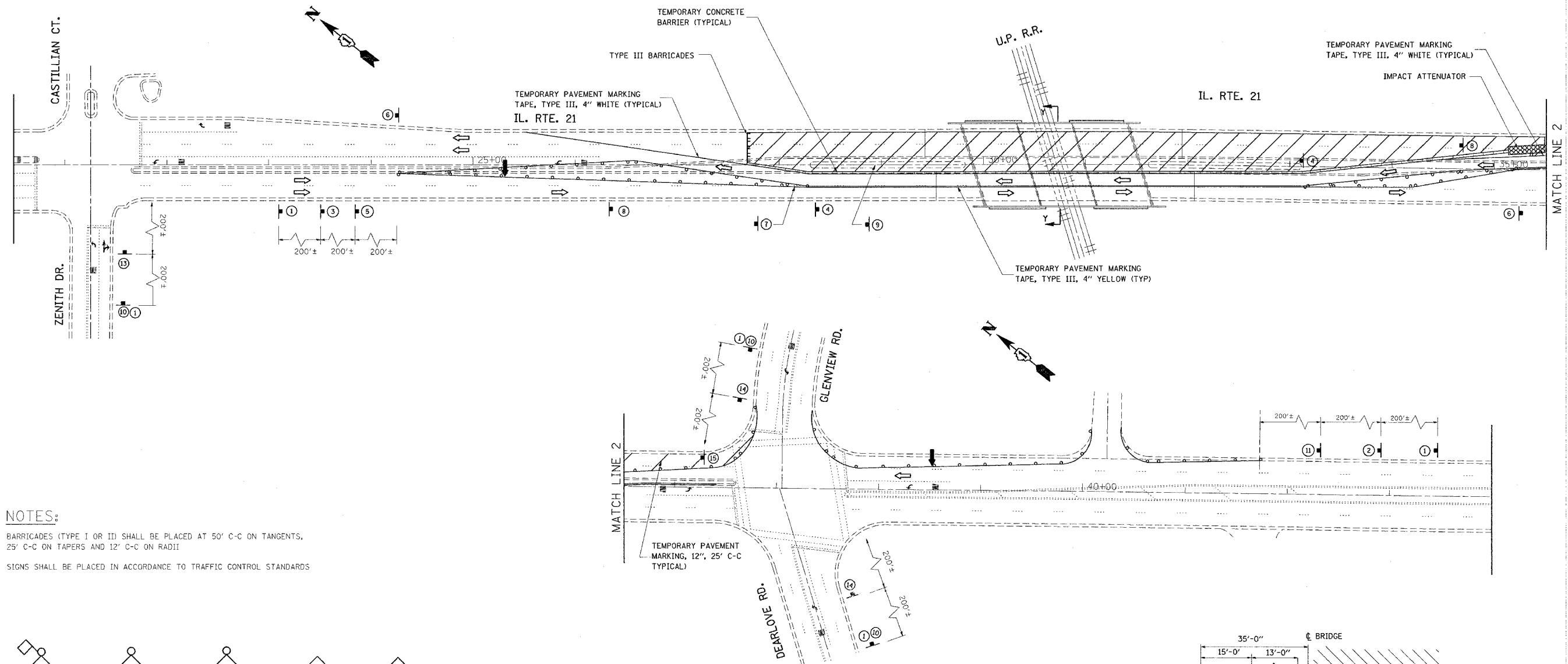


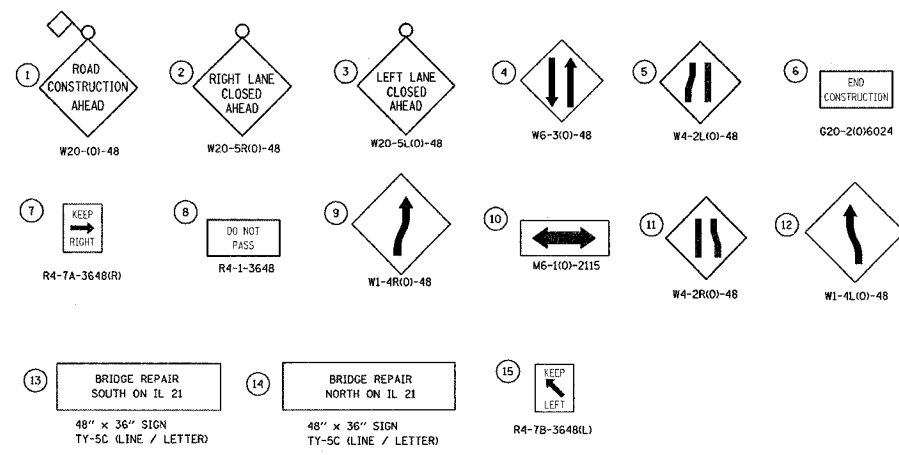
F.A.P. RTE.	SECTION	COUNTY	TOTAL SHEETS	SHEET NO.
374	211-K-V-X-B	COOK	38	8
STA.		TO STA.		
FED. ROAD DIST. NO. 1		ILLINOIS FED. AID PROJECT		



NOTES:

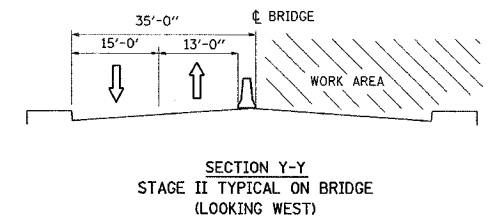
BARRICADES (TYPE I OR II) SHALL BE PLACED AT 50' C-C ON TANGENTS, 25' C-C ON TAPERS AND 12' C-C ON RADII

SIGNS SHALL BE PLACED IN ACCORDANCE TO TRAFFIC CONTROL STANDARDS



LEGEND

- WORK AREA
- TEMPORARY CONC. BARRIER
- TYPE I OR II BARRICADES W/ STEADY BURN LIGHT 25' C-C
- ARROW BOARD
- TYPE III BARRICADES (2) WITH HIGH INTENSITY FLASHING LIGHT ON EACH (TYP.)
- SIGN ON PERMANENT OR PORTABLE SUPPORT
- IMPACT ATTENUATOR



REVISIONS	
NAME	DATE

ILLINOIS DEPARTMENT OF TRANSPORTATION
 STAGE II
 SUGGESTED TRAFFIC CONTROL PLAN
 IL. RTE. 21 (MILWAUKEE AVE.) OVER
 UNION PACIFIC RAILROAD
 S.N. 016-0243
 SCALE: VERT. 1"=50'
 HORIZ. DATE DRAWN BY CHECKED BY

PLOT DATE = 8/13/2007
 FILE NAME = c:\p\proj\mca\1161407\design\eadgn
 PLOT SCALE = 50.0000 / 1 IN.
 USER NAME = smt\lml