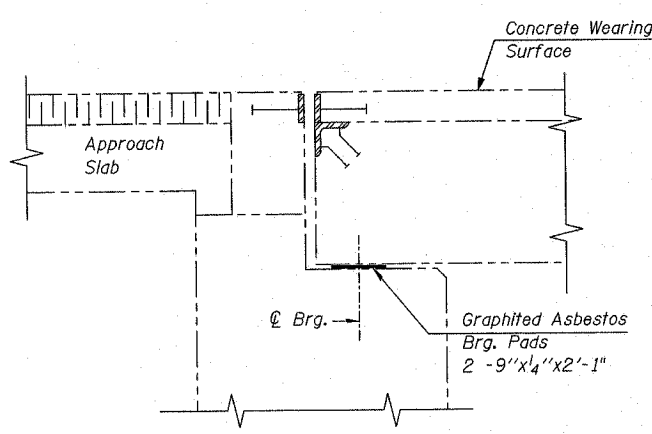
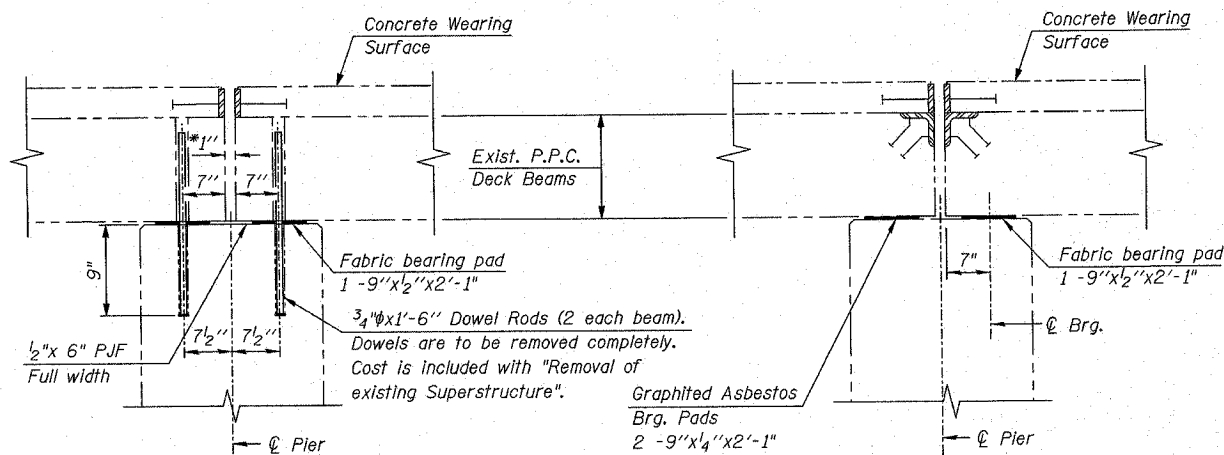


FED. AID ROUTE NO.	SECTION	COUNTY	TOTAL SHEETS	SHEET NO.
F.A. RTE. 374 (IL. RTE. 21)	211-K-V-X-B	COOK	38	21
STA.	TO STA.			
FED. ROAD DIST. NO.	ILLINOIS	FED. AID PROJECT		

CONTRACT NO. 60C20

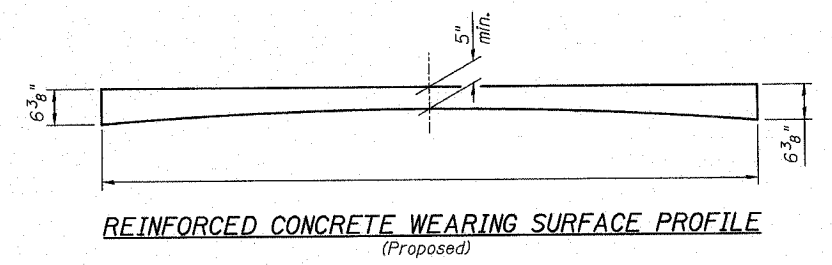


SECTION THRU ABUTMENT (EXISTING)

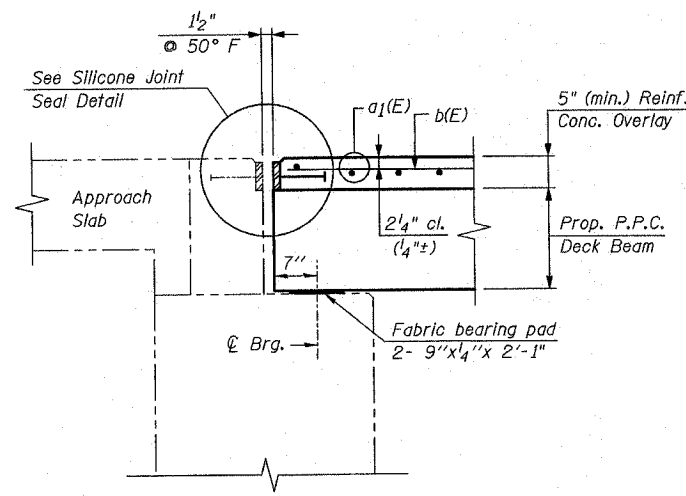


SECTION THRU FIXED PIER NO. 1 (EXISTING)

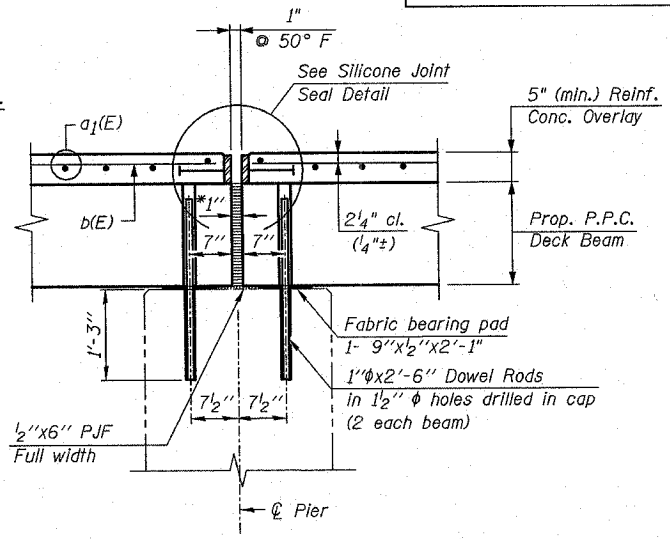
SECTION THRU EXPANSION PIER NO. 2 (EXISTING)



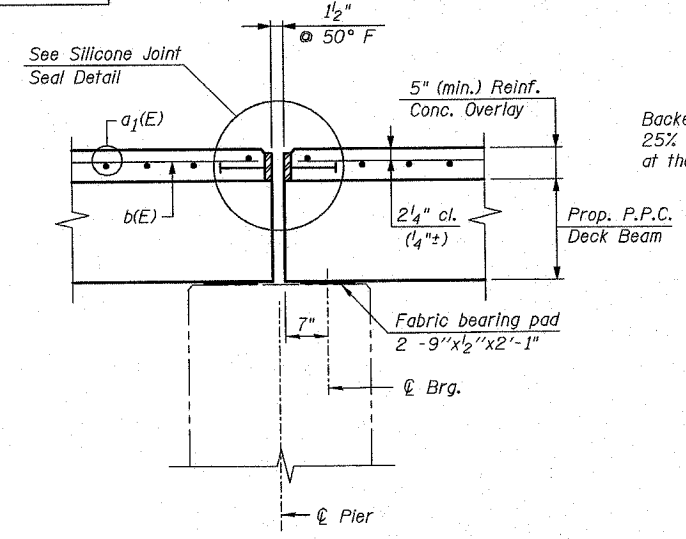
NOTE:  
Exist. P.P.C. Deck Beams & Concrete Wearing Surface to be removed



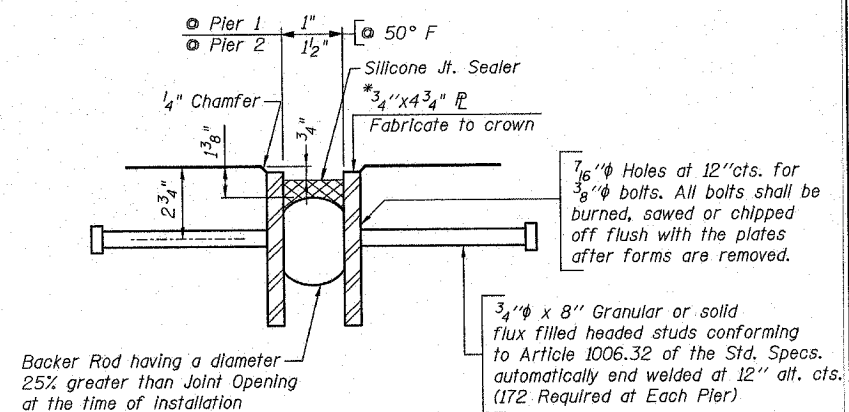
SECTION THRU ABUTMENT (PROPOSED)



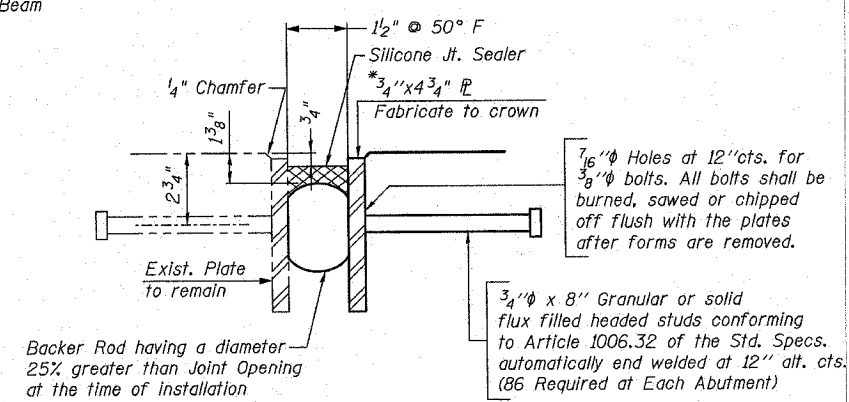
SECTION THRU FIXED PIER NO. 1 (PROPOSED)



SECTION THRU PIER NO. 2 (PROPOSED)



SILICONE JOINT SEAL (AT PIERS)



SILICONE JOINT SEAL (AT ABUTMENTS)

\* 1" Jt. shall be filled with non-shrink grout. 1" dimension may vary to accommodate tolerance in beam lengths.

Notes:  
After fabrication all surfaces of the Steel Plates shall be given one Shop Coat of paint specified for Structural Steel.  
No field painting required.

\* Furnish in segments of 20 ft. maximum length. Maximum space between installed segments shall be 3/16". Seal space with Silicone Sealant suitable for Structural Steel.

\*\* Cut retainer bars in sidewalk or median 6" short of the sidewalk or median face.

Notes:  
After beams have been erected, holes shall be drilled into substructure and anchor dowels placed. Dowel holes shall be filled with non-shrink grout to top of beam and allowed to cure min. 24 hrs. prior to grouting the shear keys.  
All horizontal dimensions are at right angles to beam ends. Hatched area to be poured after beams are in place. See Sheet S8 for bearing pad details.

REVISIONS	
NAME	DATE

ILLINOIS DEPARTMENT OF TRANSPORTATION

JOINT DETAILS

IL. 21/MILWAUKEE AVE. OVER UNION PACIFIC RAILROAD  
F.A. RTE. 374 (S.B.I. RTE. 21)  
SECTION: 211-K-V-X-B  
COOK COUNTY STATION 30+71.94  
STRUCTURE NO. 016-0243

SCALE: DATE: JUNE 12, 2007  
DRAWN BY: F.M. CHECKED BY: B.N.S.

CHRISTIAN-ROGE & ASSOC., INC.  
CHICAGO ILLINOIS