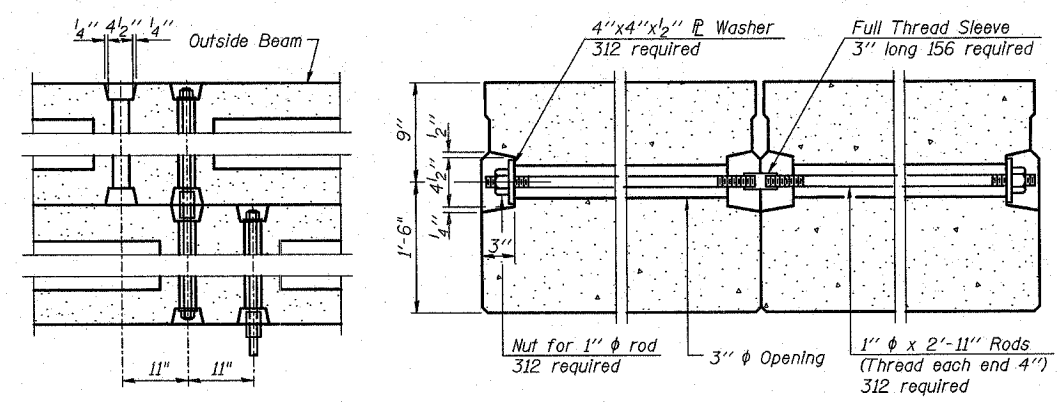
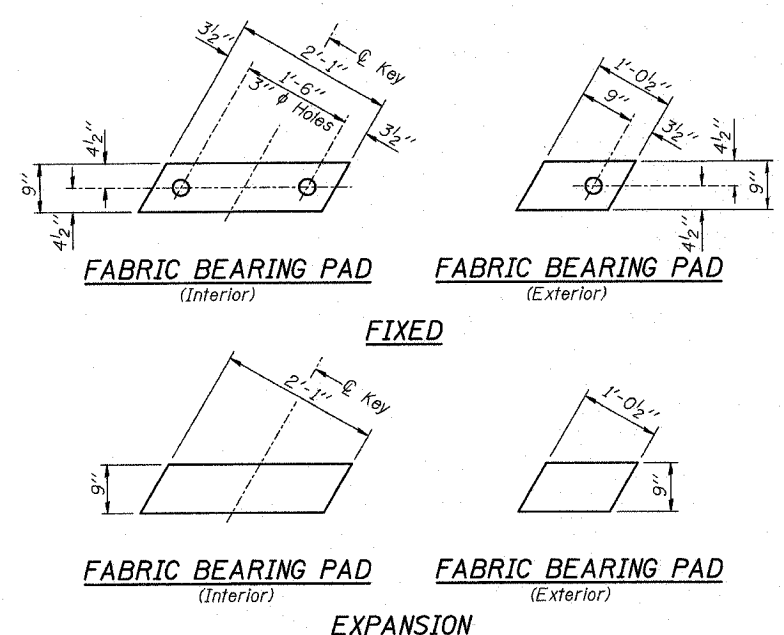
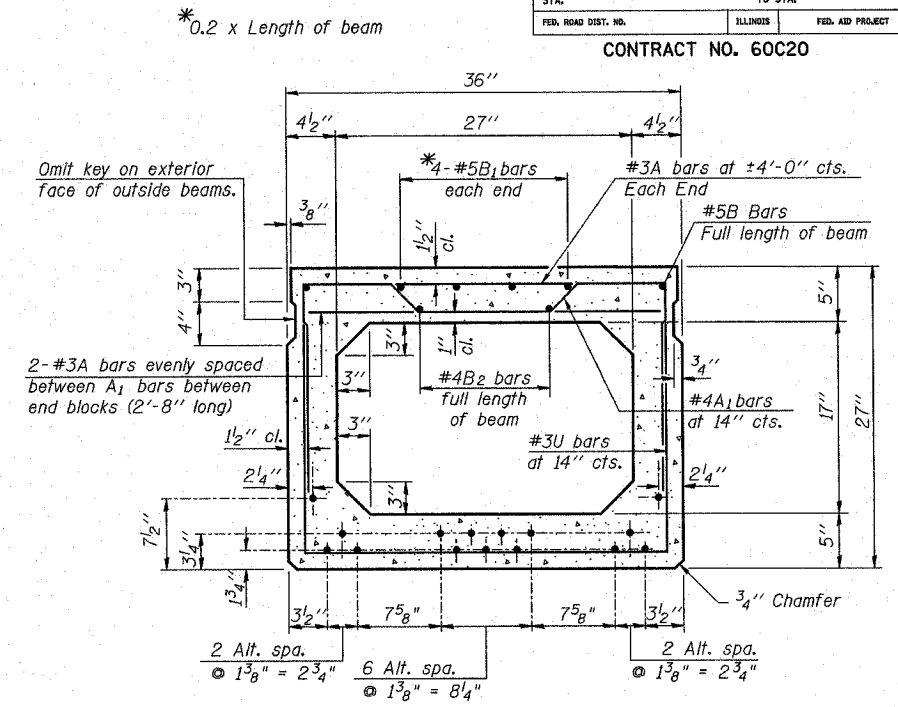
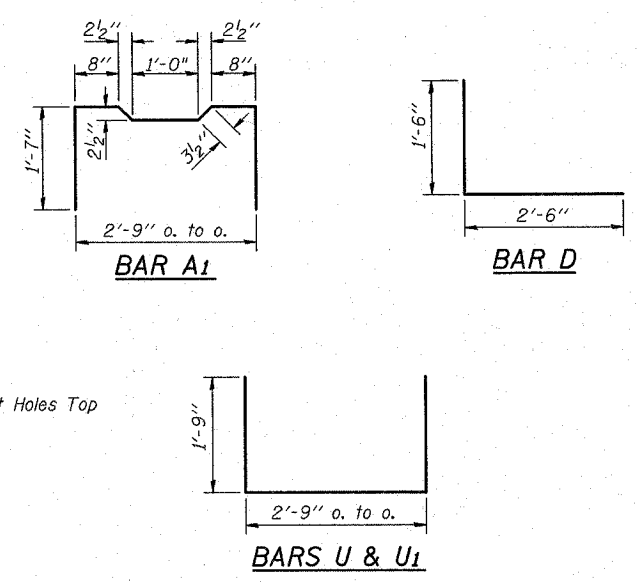


FEDERAL AID DISTRICT NO.	SECTION	COUNTY	TOTAL SHEETS	SHEET NO.
F.A. RTE. 374 (IL. RTE. 21)	211-K-V-X-B	COOK	38	22
STA.	TO STA.			
FED. ROAD DIST. NO.	ILLINOIS	FED. AID PROJECT		

CONTRACT NO. 60C20

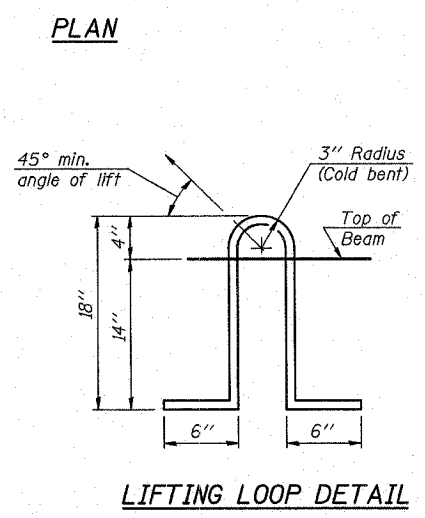
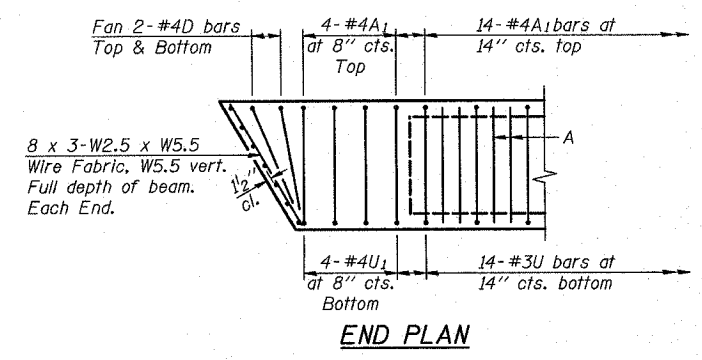
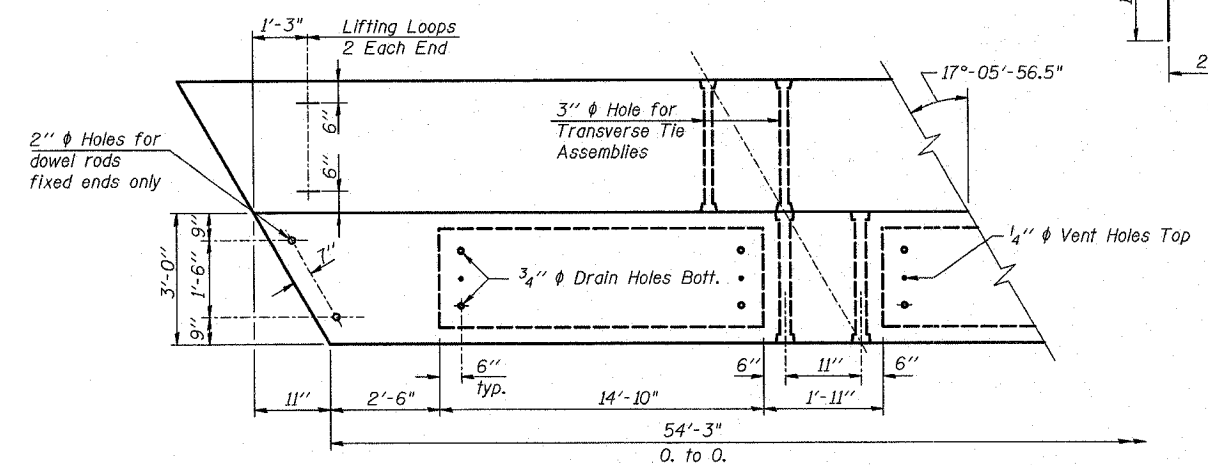
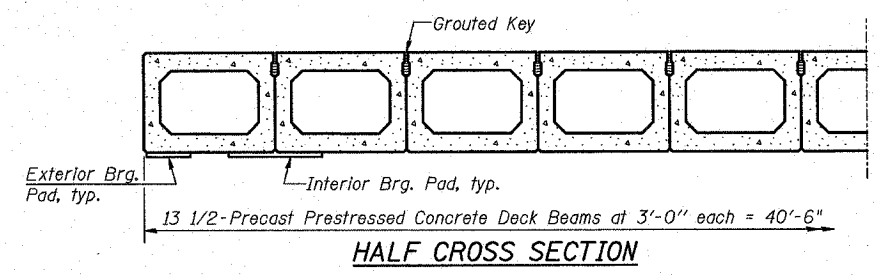


TYPICAL TRANSVERSE TIE ASSEMBLY



1/2" phi Strands, Each Strand Stressed to 30,900 Lbs.
 7 Strands 1 3/4" up, 6 Strands 3/4" up, 2 Strands 7/2" up

Note: Place strands symmetrically about centerline of beam.



NOTES

Prestressing steel shall be uncoated high strength, low relaxation 7-wire strand, Grade 270. The nominal diameter shall be 1/2" and the nominal cross-sectional area shall be 0.153 sq. in. Lifting loops shall be 2-2" phi-270 ksi strands, as shown. The 1" phi rods in the transverse tie assembly shall be tightened to a snug fit and the threads set. Pockets that receive transverse tie bar on outside shall be filled with grout after transverse tie assembly is in place. Non prestressing steel shall conform to ASTM A 706 (IL MOD), Grade 60. The bearing seat surfaces shall be adjusted by shimming to assure firm and even bearing. Two 1/8" fabric adjusting shims of the dimensions of the Exterior Bearing Pad shall be provided for each bearing. Keyway surfaces shall be cleaned to remove form oil or other bond breaking material prior to shipment of the beams. Cleaning shall be done by sandblasting the keyway areas between top of the beam and the bottom edge of the key. Corrosion inhibitor, per Article 1020.05(b)(12) of the Standard Specifications, shall be used in the concrete for precast prestressed concrete deck beams. Required Release Strength, f'ci, shall be 4,000 p.s.i. See Sheet S5 for the Anchor Dowels for Sidewalk and Median into P.P.C. Deck Beams.

BILL OF MATERIAL

Precast Prestressed Concrete Deck Beams	Sq. Ft.	13,185
---	---------	--------

REVISIONS	
NAME	DATE

ILLINOIS DEPARTMENT OF TRANSPORTATION
P.P.C. DECK BEAM DETAILS
 MILWAUKEE AVE. (IL. RTE. 21) OVER UNION PACIFIC RAILROAD
 F.A. RTE. 374 (S.B.I. RTE. 21)
 SECTION: 211-K-V-X-B
 COOK COUNTY STATION 30+71.94
 STRUCTURE NO. 016-0243

SCALE: DATE: JUNE 12, 2007
 DRAWN BY: F.M. CHECKED BY: B.N.S.
CHRISTIAN-ROGE & ASSOC., INC.
 CHICAGO ILLINOIS