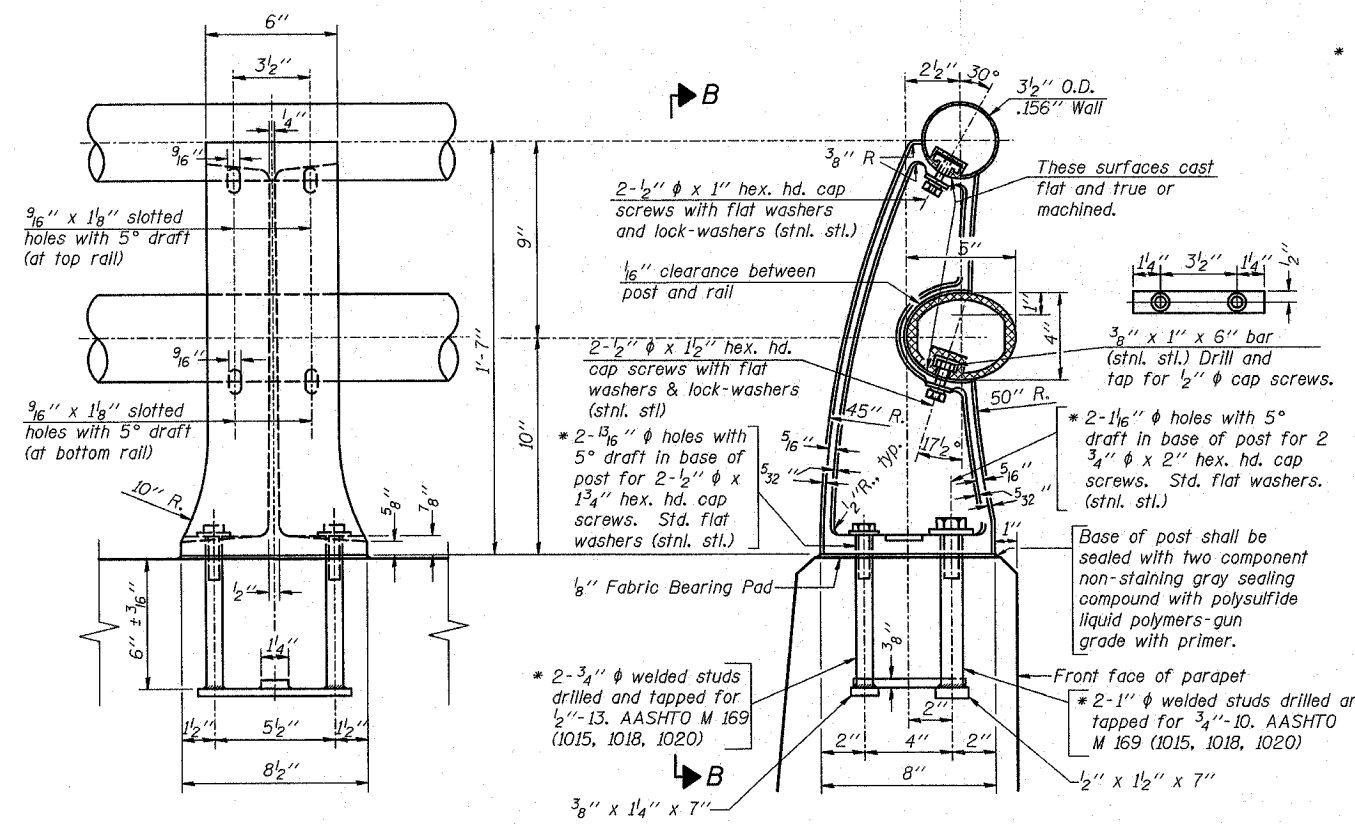


| | | | | |
|-----------------------------|-------------|------------------|--------------|-----------|
| FED. AID DIST. NO. | SECTION | COUNTY | TOTAL SHEETS | SHEET NO. |
| F.A. RTE. 374 (IL. RTE. 21) | 211-K-V-X-B | COOK | 38 | 23 |
| STA. | TO STA. | | | |
| FED. ROAD DIST. NO. | ILLINOIS | FED. AID PROJECT | | |

CONTRACT NO. 60C20

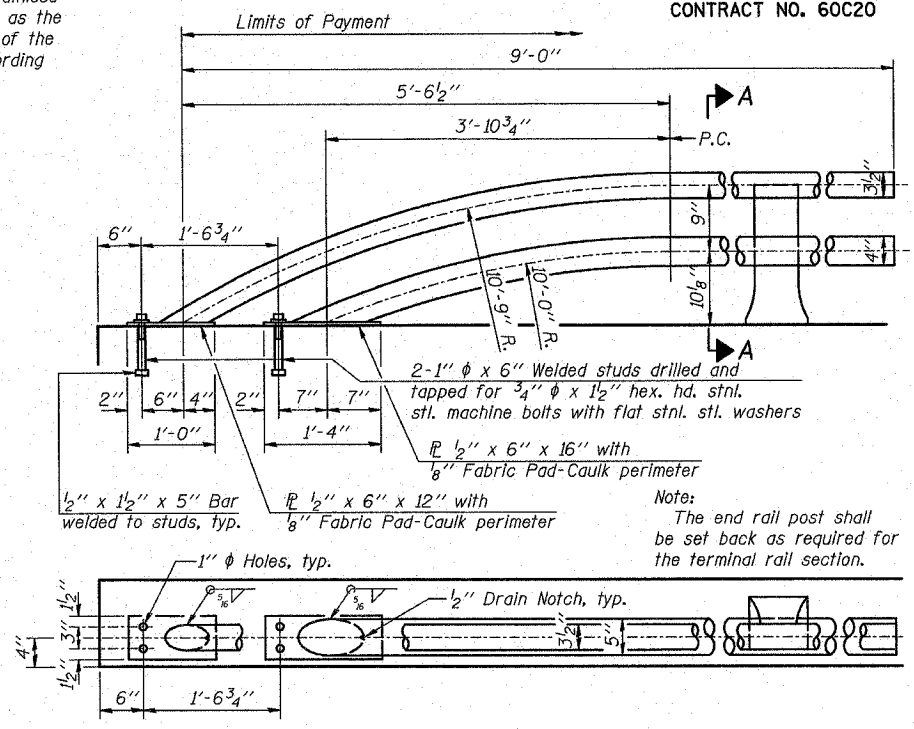


VIEW B-B

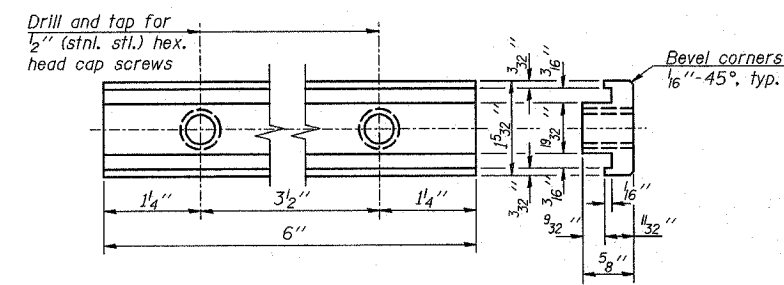
SECTION A-A

RAIL POST DETAILS

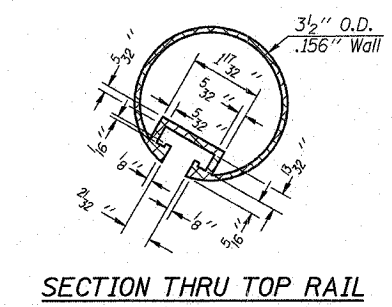
* In lieu of the cast-in-place anchor device shown, the Contractor has the option of drilling and setting stainless steel anchor rods of the same diameter and grade as the specified cap screws according to Article 509.06 of the Standard Specifications. Embedment shall be according to the manufacturer's specifications.



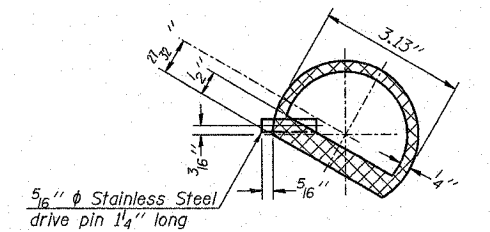
RAIL TERMINAL SECTION



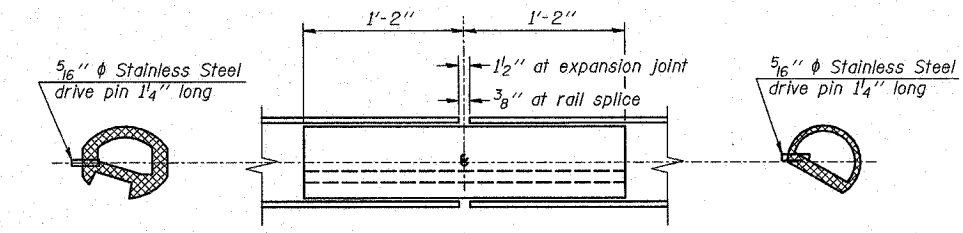
RAIL POST CLAMP BAR
For Top Rail



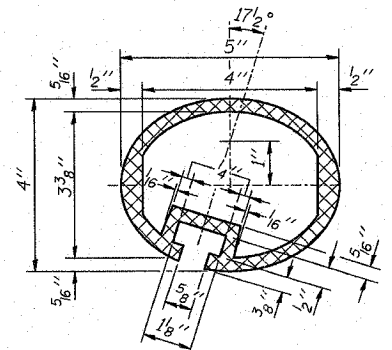
SECTION THRU TOP RAIL



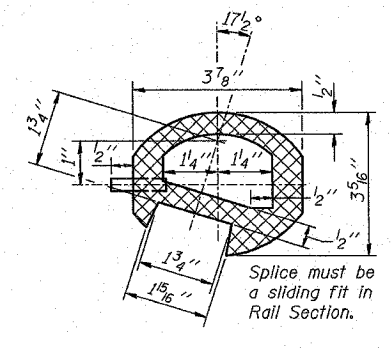
SECTION THRU SPLICE
For Top Rail



RAIL SPLICE



SEC. THRU ELLIPTICAL
RAIL SECTION



SEC. THRU SPLICE

Notes:
All Posts shall be normal to parapet.
All joints in rail shall be spliced per detail.
Provide 1-1/8" and 2-1/16" Aluminum Shims for 25% of the Posts. Rail elements shall be parallel to Grade-high spots will be ground and low spots shimmed.
See Sheet S6 for rail post spacing.

BILL OF MATERIAL

| Item | Unit | Quantity |
|--------------------------|------|----------|
| Aluminum Railing, Type L | Foot | 326 |

ILLINOIS DEPARTMENT OF TRANSPORTATION
ALUMINUM RAILING, TYPE L
MILWAUKEE AVE. (IL. RTE. 21) OVER
UNION PACIFIC RAILROAD
F.A. RTE. 374 (S.B.I. RTE. 21)
SECTION: 211-K-V-X-B
COOK COUNTY STATION 30+71.94
STRUCTURE NO. 016-0243
SCALE: DATE: JUNE 12, 2007
DRAWN BY: F.M.
CHECKED BY: B.N.S.
CHRISTIAN-ROGE & ASSOC., INC.
CHICAGO ILLINOIS

| REVISIONS | |
|-----------|------|
| NAME | DATE |
| | |
| | |
| | |
| | |