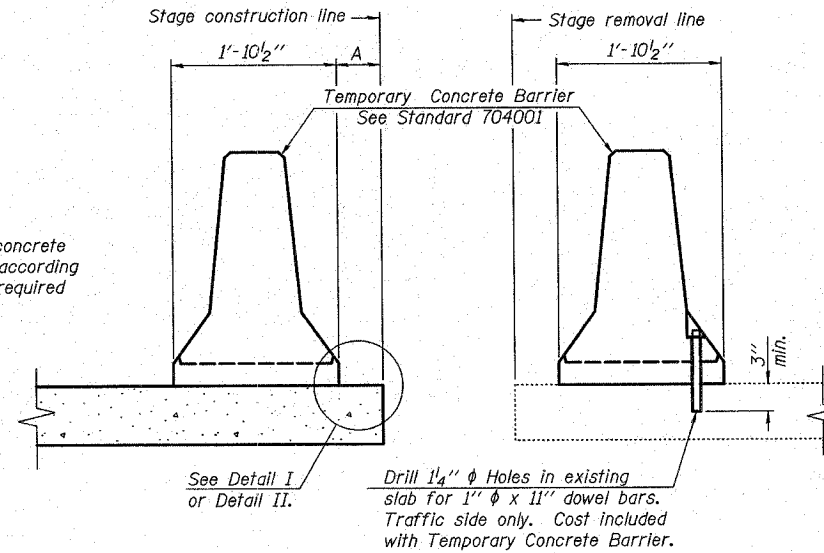


FED. AID PROJECT NO.	SECTION	COUNTY	TOTAL SHEETS	SHEET NO.
F.A. RTE. 374 (IL. RTE. 21)	211-K-V-X-B	COOK	38	27
STA.	TO STA.			
FED. ROAD DIST. NO.	ILLINOIS	FED. AID PROJECT		

CONTRACT NO. 60C20

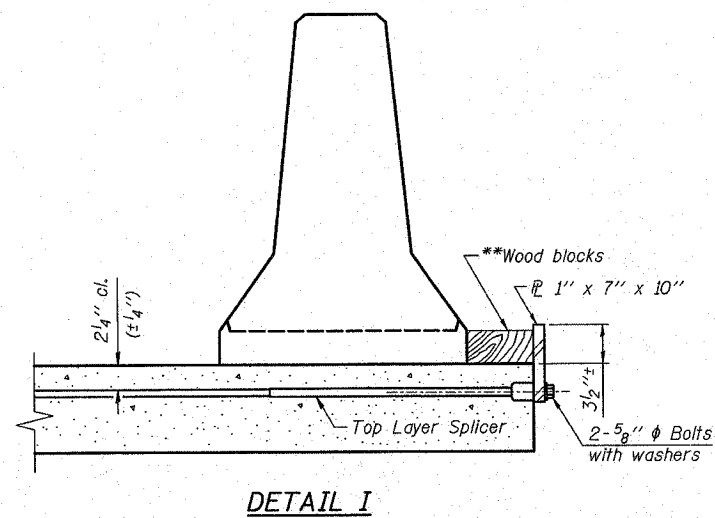
When "A" is 3'-6" or less, the temporary concrete barrier shall be anchored to the new slab according to Detail I or Detail II. No anchorage is required when "A" is greater than 3'-6".



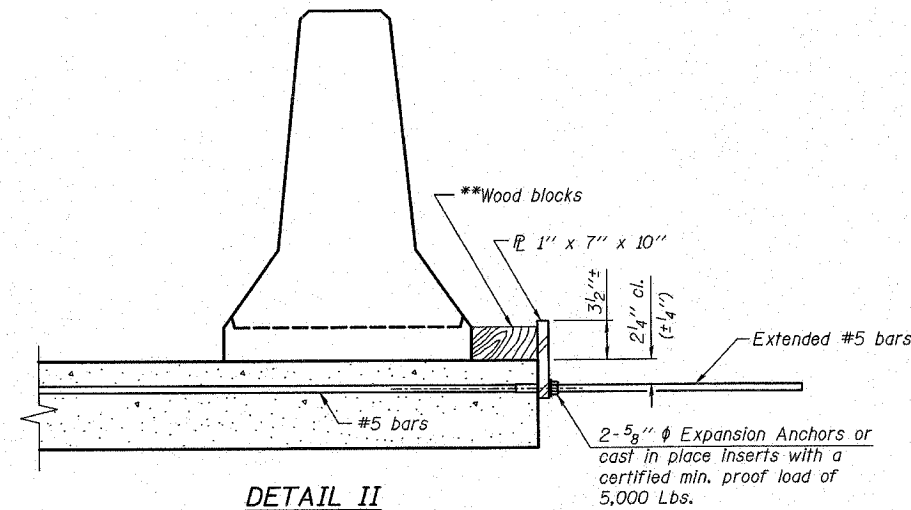
NEW SLAB

EXISTING SLAB

SECTIONS THRU SLAB



DETAIL I



DETAIL II

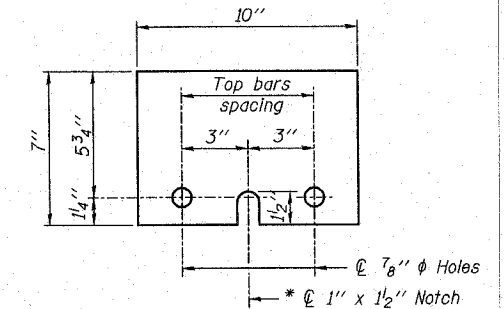
** Wood blocks may be omitted when required to provide minimum stage traffic lane width. When the wood blocks are omitted, the concrete barrier shall be in direct contact with the steel retainer plate.

NOTES

Detail I - With Bar Splicer or Couplers: Connect one (1) 1"x7"x10" steel PL to the top layer of couplers with 2-5/8" phi bolts screwed to coupler at approximate CL of each barrier panel.

Detail II - With Extended Reinforcement Bars: Connect one (1) 1"x7"x10" steel PL to the concrete slab with 2-5/8" phi Expansion Anchors or cast in place inserts spaced between the top layer of reinforcement at approximate CL of each barrier panel.

Cost of anchorage is included with Temporary Concrete Barrier. The 1" x 7" x 10" plate shall not be removed until stage II construction forms and all reinforcement bars are in place and the concrete is ready to be placed.



STEEL RETAINER PL 1" x 7" x 10"

* Required only with Detail II

R-27 11-1-06

REVISIONS	
NAME	DATE

ILLINOIS DEPARTMENT OF TRANSPORTATION
 TEMPORARY CONCRETE BARRIER
 FOR STAGE CONSTRUCTION
 MILWAUKEE AVE. (IL. RTE. 21) OVER
 UNION PACIFIC RAILROAD
 F.A. RTE. 374 (S.B.I. RTE. 21)
 SECTION: 211-K-V-X-B
 COOK COUNTY STATION 30+71.94
 STRUCTURE NO. 016-0243
 SCALE: DRAWN BY: F.M.
 DATE: JUNE 12, 2007 CHECKED BY: B.N.S.
CHRISTIAN-ROGE & ASSOC., INC.
 CHICAGO ILLINOIS