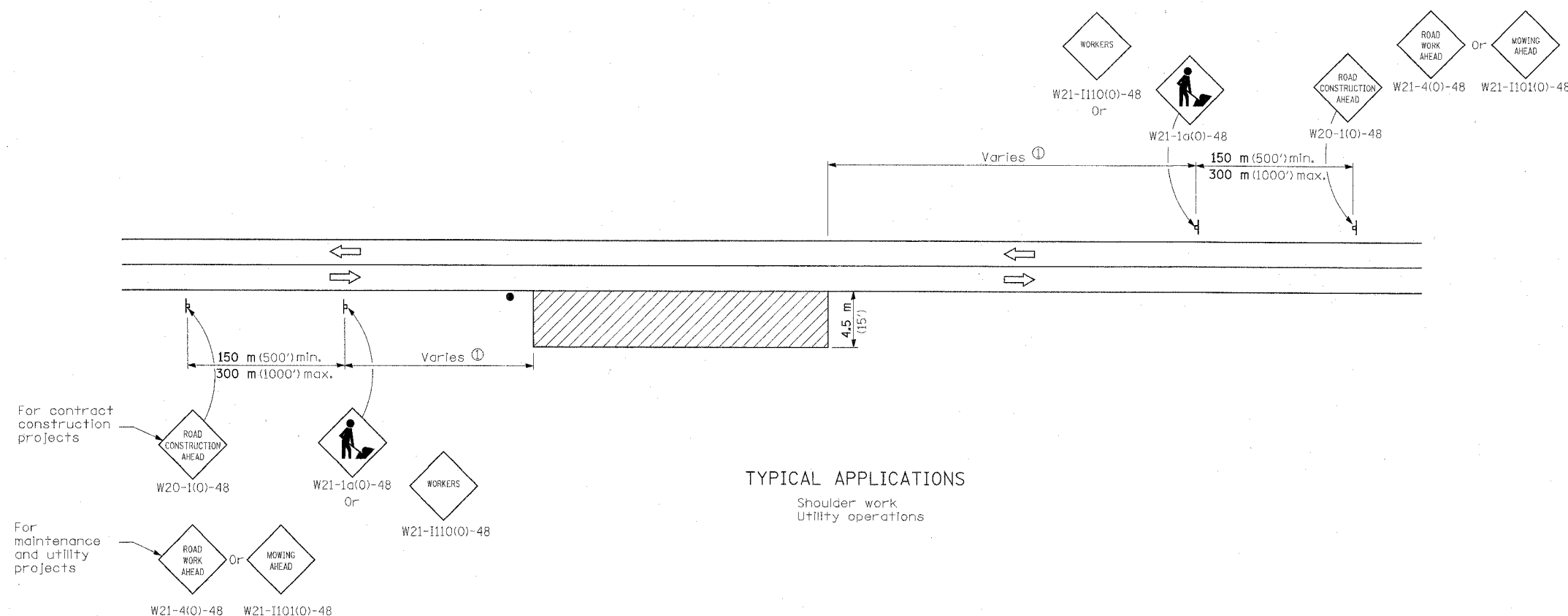


F.A.U. RTE.	SECTION	COUNTY	TOTAL SHEETS	SHEET NO.
332	2007-037TS	COOK/WILL	34	25
STA.		TO STA.		
FED. ROAD DIST. NO.	ILLINOIS	FED. AID PROJECT		

D-91-343-07



**TYPICAL APPLICATIONS**

Shoulder work  
Utility operations

**SYMBOLS**

-  Work area
-  Sign
-  Flagger with traffic control sign when required

① Minimum distance is 60 m (200'). Maximum distance to be determined by the Engineer but should not exceed 1/2 the length required for one normal working day's operation, or 6.4 km (4 miles) which ever is less.

**GENERAL NOTES**

This Standard is used where at any time, any vehicle, equipment, workers or their activities require an intermittent or continuous moving operation on the shoulder, where the average speed is 2 km/h (1 mph) or less.

When the work operation does not exceed 60 minutes, traffic control may be according to Standard 701301.

All dimensions are in millimeters (inches) unless otherwise shown.

**OFF-RD MOVING OPERATIONS,  
2L, 2W, DAY ONLY**

**STANDARD 701011-01**

PLOT DATE = 11/26/07  
FILE NAME = 701011-01  
PLOT SCALE = 1:1  
USER NAME = RPL/ANNE

**INFRASTRUCTURE ENGINEERING, INC.**  
33 W. MONROE ST. SUITE 1540  
CHICAGO, IL 60603-5322  
PHONE 312.425.9560  
FAX 312.425.9564

REVISIONS		ILLINOIS DEPARTMENT OF TRANSPORTATION
NAME	DATE	
		DISTRICT ONE EXPRESSWAY LANE CLOSURE DETAILS

SCALE: VERT. DATE 11/26/07  
HORIZ. DRAWN BY BL  
CHECKED BY ER/TC