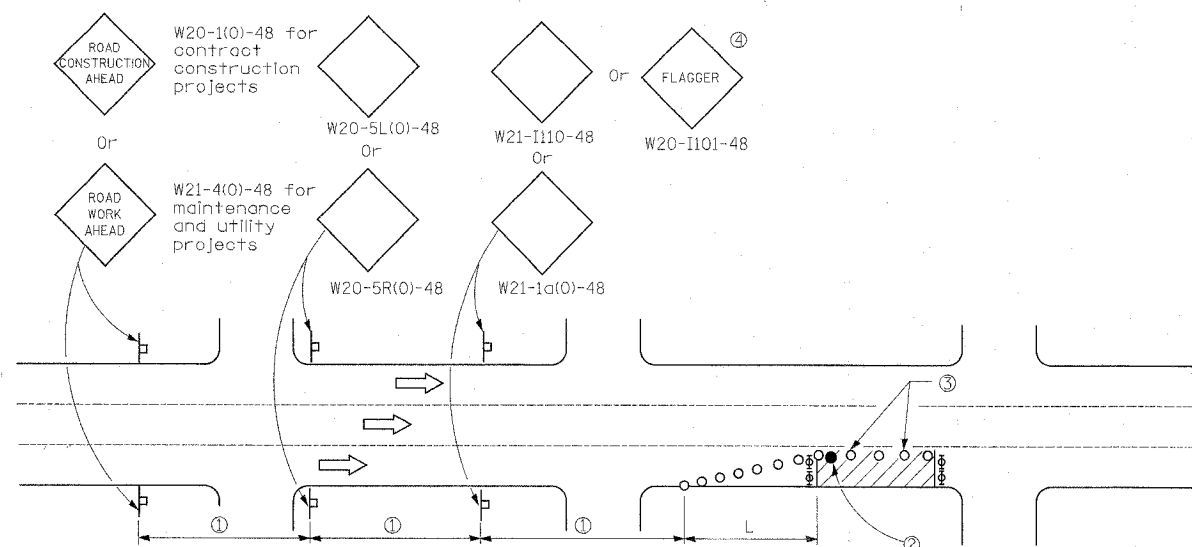


F.A.U. RTE.	SECTION	COUNTY	TOTAL SHEETS	SHEET NO.
332	2007-037TS	COOK/WILL	34	29
STA.		TO STA.		
FED. ROAD DIST. NO.	ILLINOIS FED. AID PROJECT			

D-91-343-07



SIGN SPACING	
Posted Speed	Sign Spacing
55	164 m (500')
50-45	115 m (350')
<45	60 m (200')

SYMBOLS

- Arrow board
- Cone, drum or barricade
- Sign on portable or permanent support
- Work area
- Barricade or drum with flashing light
- Type III barricade with flashing lights
- Flagger with traffic control sign.

- ① Refer to SIGN SPACING TABLE for distances.
- ② Required for speeds > 40 MPH
- ③ Cones at 8 m (25') centers for 75 m (250'). Additional cones may be placed at 15 m (50') centers. When drums or Type I or Type II barricades are used, the interval between devices may be doubled.
- ④ Use flagger sign only when flagger is present.
- ⑤ For approved sideroad closures.

GENERAL NOTES

This Standard is used where at any-time, day or night, any vehicle, equipment, workers or their activities encroach on the pavement during shoulder operations or where construction requires lane closures in urban areas.

Calculate L as follows:

SPEED LIMIT	FORMULAS	
70 km/h (40 mph) or less:	Metric $L = \frac{WS^2}{150}$	(English) $L = \frac{WS^2}{60}$
80 km/h (45 mph) or greater:	$L = 0.65(W)(S) \quad L = (W)(S)$	
W = Width of offset in meters (feet).		
S = Normal posted speed km/h (mph).		

All dimensions are in millimeters (Inches) unless otherwise shown.

**URBAN LANE CLOSURE,
MULTILANE, 1W OR 2W WITH
NONTRAVERSABLE MEDIAN**
(Sheet 1 of 2)

STANDARD 701601-04

PLOT DATE = 11/26/07
PLOT SCALE = #SCALE*
USER NAME = #P_NAME

INFRASTRUCTURE ENGINEERING, INC.
33 W. MONROE ST. SUITE 1540
CHICAGO, IL 60603-5322
PHONE 312.425.9560
FAX 312.425.9564

REVISIONS		ILLINOIS DEPARTMENT OF TRANSPORTATION
NAME	DATE	
		DISTRICT ONE EXPRESSWAY LANE CLOSURE DETAILS
SCALE:	VERT. DATE 11/26/07	DRAWN BY BL CHECKED BY ER/TC