

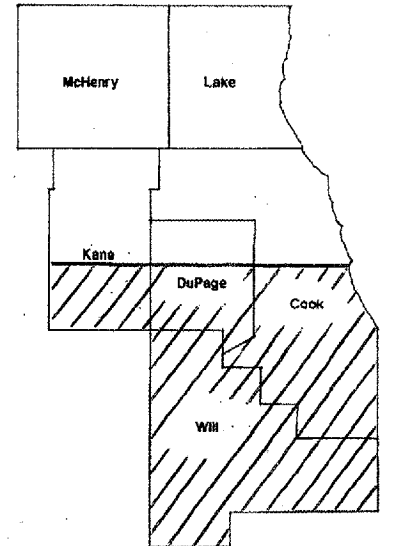
ROUTE	SECTION	COUNTY	TOTAL SHEETS	SHEET NUMBER
VARIOUS (SOUTH)	2007-053I	VARIOUS	3	1

CONTRACT 60D46  
D-91-026-08

STATE OF ILLINOIS  
DEPARTMENT OF TRANSPORTATION  
DIVISION OF HIGHWAYS  
DISTRICT ONE

**PROPOSED HIGHWAY PLANS**

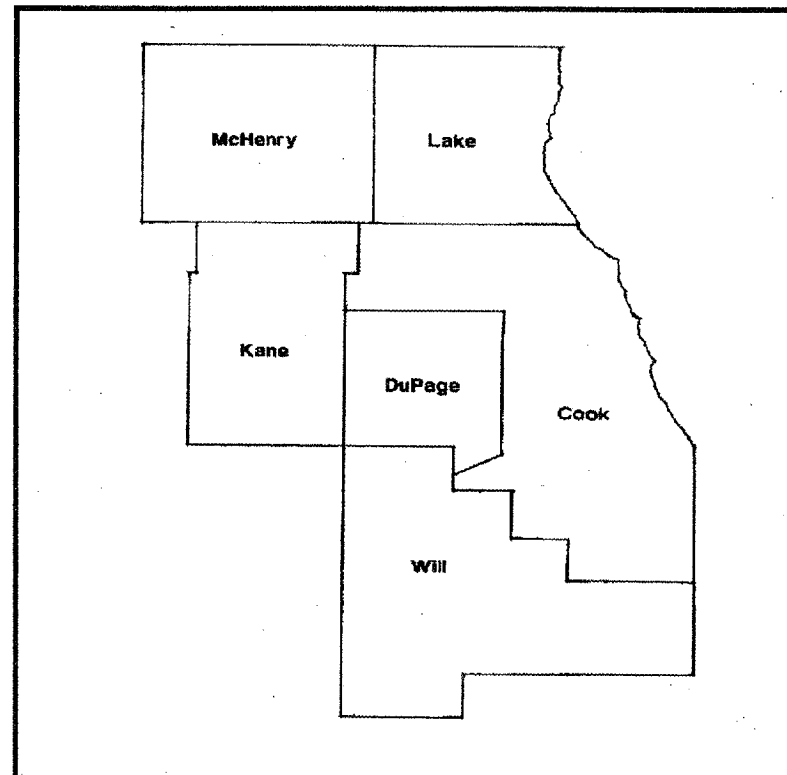
ROUTE: VARIOUS (SOUTH)  
SECTION 2007-053I  
WEED CONTROL SELECTIVE AND NON-SELECTIVE  
VARIOUS COUNTIES  
C-91-026-08



LOCATION OF IMPROVEMENT INDICATED THUS: 

FOR INDEX OF SHEETS SEE PAGE 2

**IMPROVEMENT IS IN VARIOUS  
LOCATIONS WITHIN DISTRICT  
ONE**



STATE OF ILLINOIS  
DEPARTMENT OF TRANSPORTATION  
DIVISION OF HIGHWAYS

SUBMITTED: Nov 6 2007  
Diane O'Keefe/caf  
DISTRICT ENGINEER

December 7, 2007  
Eric E. Harn  
ENGINEER OF DESIGN AND ENVIRONMENT

December 7, 2007  
Christine M. Reed  
DIRECTOR, DIVISION OF HIGHWAYS

**PRINTED BY THE AUTHORITY  
OF THE STATE OF ILLINOIS**

J.U.L.I.E.: JOINT UTILITY LOCATION  
INFORMATION FOR EXCAVATION  
(800) 892-0123

DISTRICT ONE BUREAU OF MAINTENANCE: J. STUMPNER  
MAINTENANCE LANDSCAPE DESIGNER: R. WANNER / T. JACKSON (847) 705-4171

CONTRACT 60D46

**INDEX OF SHEETS**

- 1 COVER SHEET
- 2 INDEX OF SHEETS  
GENERAL NOTES  
SUMMARY OF QUANTITIES  
STATE STANDARDS
- 3 TC- 17

ROUTE	SECTION	COUNTY	TOTAL SHEETS	SHEET NUMBER
VARIOUS (SOUTH)	2007-053I	VARIOUS	3	2

CONTRACT 60D46

**SUMMARY OF QUANTITIES**

CODE NUMBER	DESCRIPTION	UNIT	100% STATE TOTAL	Y003	Y003
				CONTRACT MAINT TOTAL	FORMAL CONTRACTS TOTAL
67100100	MOBILIZATION	L SUM	1	1	0
X0322324	WEED CONTROL, TEASEL	POUND	35	20	15
X0322326	WEED CONTROL, THISTLE	POUND	220	160	60
X0325896	WEED CONTROL TOTAL VEGETATION	GALLON	180	180	0

**GENERAL NOTES**

ALL SPRAY LOCATIONS WILL BE DIRECTED BY THE ENGINEER.

ESCORT AND OVERDRIVE ARE TO BE TANK MIXED TOGETHER AND SPRAYED ON TEASEL AND THISTLE INFESTED AREAS.

ESCORT AND OVERDRIVE ARE TO BE TANK MIXED TOGETHER AND SPRAYED ON TURF AREAS DESIGNATED FOR CHEMICAL MOWING .

FOR EXPRESSWAYS THE CONTRACTOR SHALL CONTACT THE BUREAU OF TRAFFIC FOR TRAFFIC CLEARANCE NO LATER THAN 11:00 A.M THE DAY BEFORE WORK BEGINS.

**STATE STANDARDS**

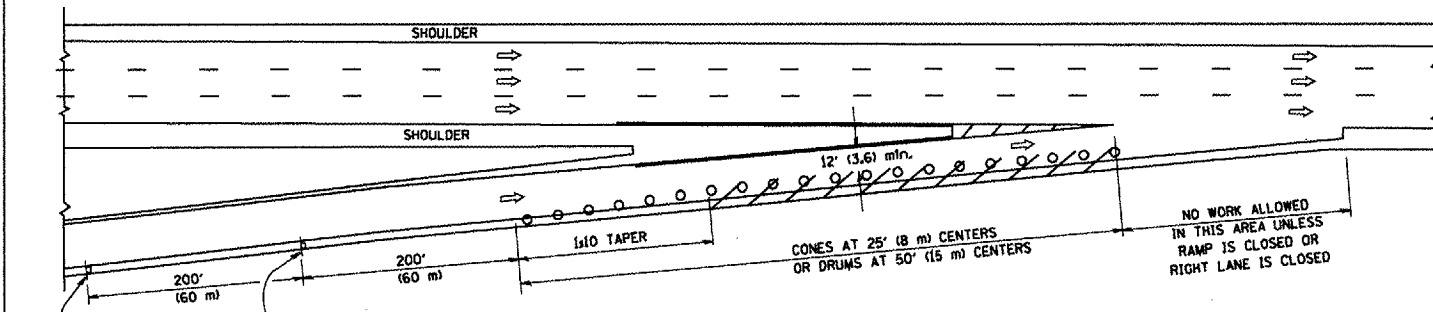
701426-02

701901

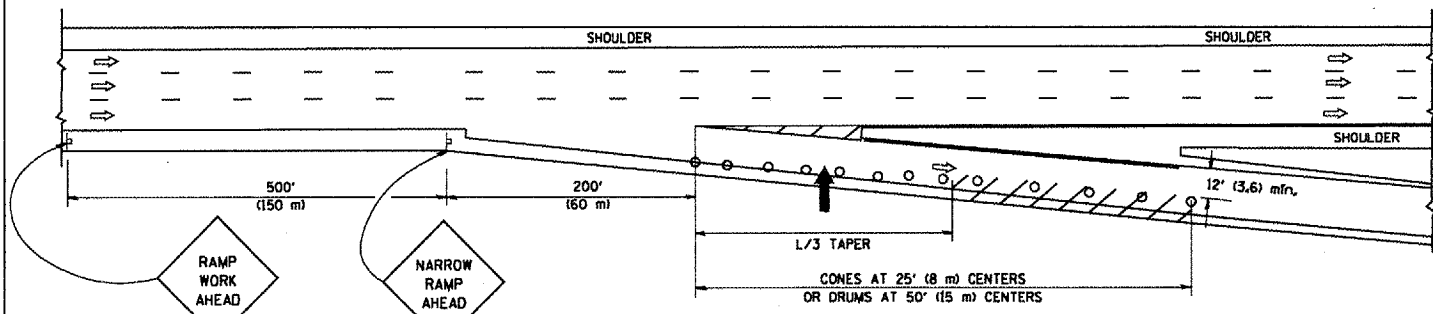
701311-02

ILLINOIS DEPARTMENT OF TRANSPORTATION
WEED CONTROL SELECTIVE AND NON-SELECTIVE

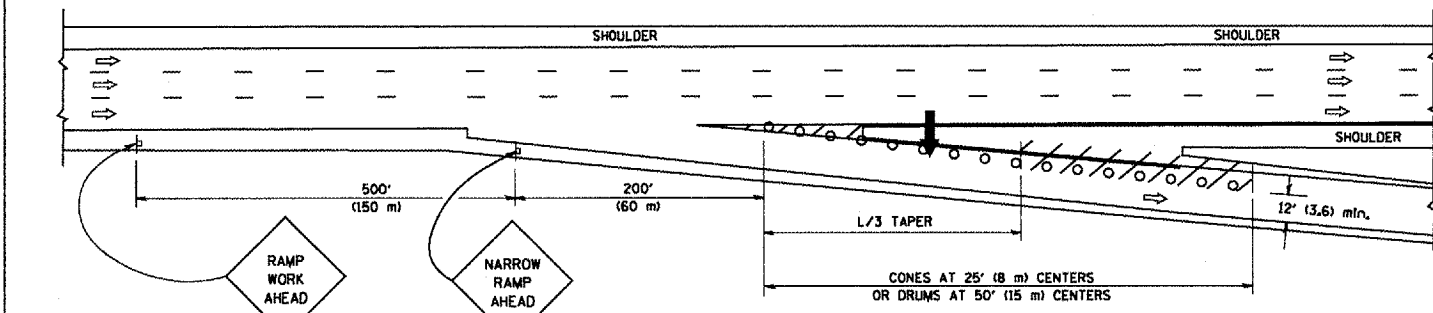
PARTIAL RAMP CLOSURE DETAILS



TYPICAL ENTRANCE RAMP



TYPICAL EXIT RAMP



TYPICAL EXIT RAMP

SYMBOLS

- ARROWBOARD
- WORK AREA
- SIGN ON PORTABLE OR PERMANENT SUPPORT
- FLAGGER WITH CONTROL SIGN
- TYPE II BARRICADE, DRUM OR VERTICAL BARRICADE WITH STEADY BURN MONO-DIRECTIONAL LIGHT
- CONE, DRUM OR BARRICADE

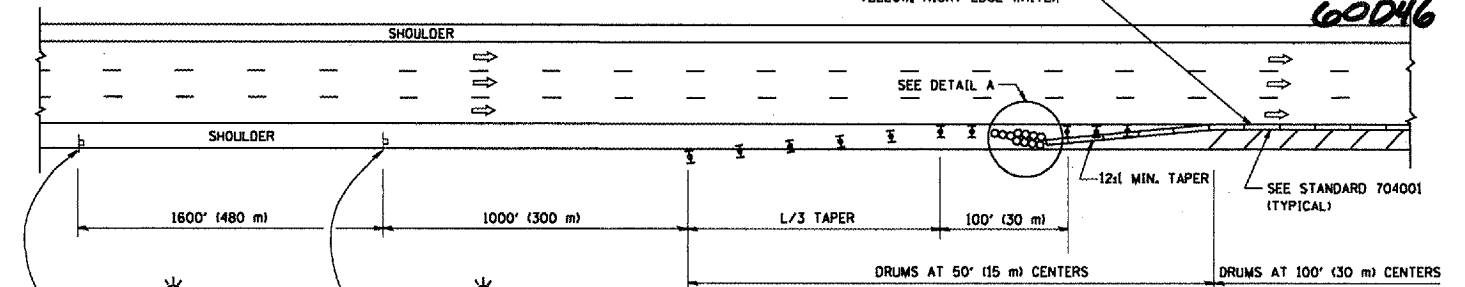
GENERAL NOTES

1. THE "L" DISTANCE EQUALS:
 

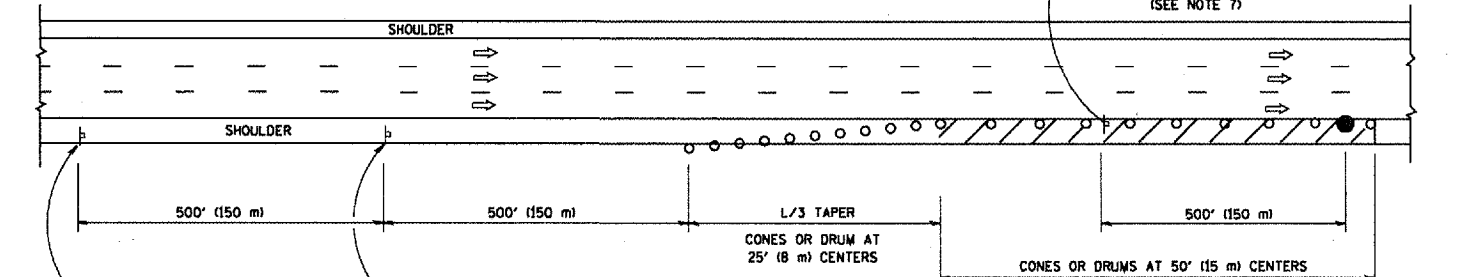
SPEED LIMIT	FORMULAS
45 mph (80 km/h) OR GREATER:	METRIC: $L=0.65(W)(S)$
	ENGLISH: $L=(W)(S)$

W = WIDTH OF OFFSET IN FEET (METERS)  
S = NORMAL POSTED SPEED MPH (KM/H)
2. PLASTIC DRUMS WITH HIGH PERFORMANCE REFLECTIVE SHEETING AND STEADY BURNING LIGHTS ARE REQUIRED FOR ALL NIGHTTIME CLOSURES.
3. ALL SIGNS SHALL BE POST MOUNTED IF THE CLOSURE TIME EXCEEDS FOUR DAYS.
4. FLASHING LIGHTS SHALL BE USED DURING THE HOURS OF DARKNESS AND SHALL BE INSTALLED ABOVE THE FIRST TWO SETS OF SIGNS.

SHOULDER CLOSURE DETAILS



PERMANENT SHOULDER CLOSURE



DAYTIME SHOULDER CLOSURE

THIS DETAIL IS USED WHERE:  
1. VEHICLES, EQUIPMENT, WORKERS OR THEIR ACTIVITIES ENCRUSH IN AN AREA CLOSER THAN 15' (4.5 m) TO THE EDGE OF PAVEMENT FOR A PERIOD IN EXCESS OF 15 MINUTES.

ARRAY DESIGN PER MANUFACTURER TO BE NCHRP 350 COMPLIANT FOR POSTED SPEED.

DETAIL "A"  
IMPACT ATTENUATOR, TEMPORARY  
(SEE NOTE 5)

ALL DIMENSIONS ARE IN INCHES (MILLIMETERS) UNLESS OTHERWISE SHOWN.

REVISIONS		
NAME	DATE	
DWS	11/96	
JAF	12/02	
NCHRP 350	04/03	
JAF	2/06	
SPB	1/07	

ILLINOIS DEPARTMENT OF TRANSPORTATION  
TRAFFIC CONTROL DETAILS  
FOR FREEWAY  
SHOULDER CLOSURES  
PARTIAL RAMP CLOSURES

SCALE: NONE

DESIGNED BY: DWS  
DRAWN BY:  
CHECKED BY:  
TC-17

F.A. RTE.	SECTION	COUNTY	TOTAL SHEETS	SHEET NO.
	2001-0581 VAR 3 3			
STA.	TO STA.			
FED. ROAD DIST. NO.	ILLINOIS	FED. AID PROJECT	60046	