

F.A.I. RTE.	SECTION	COUNTY	TOTAL SHEETS	SHEET NO.
90/94	2007-056 5G	COOK	30	10
STA. 20+00		TO STA. 35+00		
FED. ROAD DIST. NO.		ILLINOIS FED. AID PROJECT		

STAGE 2 CONSTRUCTION

CONSTRUCT LEFT SIDE OF SIGNING FRAME FOUNDATION, CURB AND GUTTER AND GUARDRAIL.

STAGE 2 TRAFFIC

USE DISTRICT STANDARD TC-17, TRAFFIC CONTROL DETAILS FOR FREEWAY SHOULDER CLOSURES PARTIAL RAMP CLOSURES TO CONSTRUCT LEFT SIDE OF SIGNING FRAME, CURB AND GUTTER AND GUARDRAIL.

THE ENGINEER SHALL PROVIDE ADDITIONAL TRAFFIC CONTROL FOR THE CLOSING OF ALL LANES OF I-90/94 IN ACCORDANCE WITH THE SPECIAL PROVISION TRAFFIC CONTROL AND PROTECTION (EXPRESSWAYS) TO INSTALL OVERHEAD PORTION OF SIGNING FRAME.

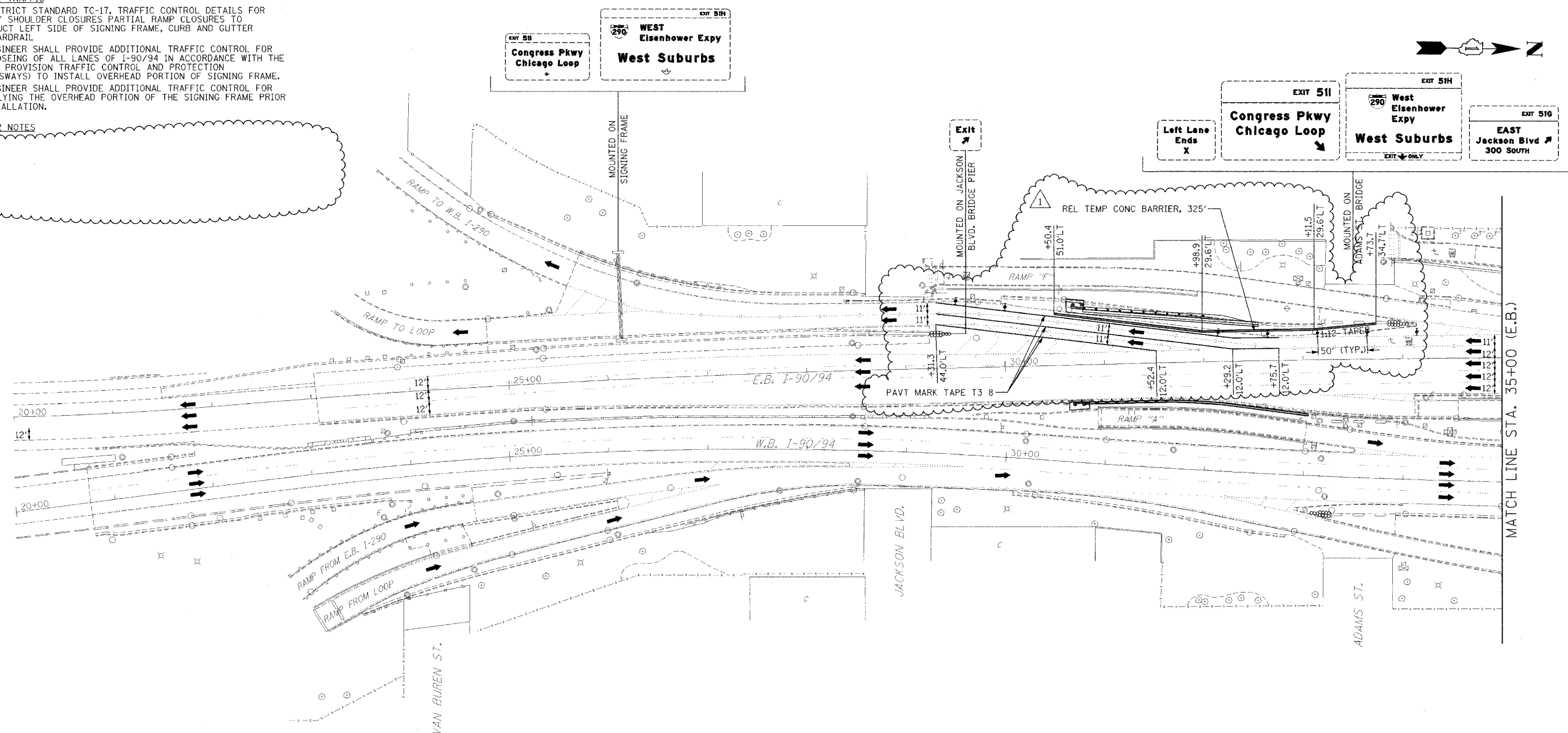
THE ENGINEER SHALL PROVIDE ADDITIONAL TRAFFIC CONTROL FOR ASSEMBLING THE OVERHEAD PORTION OF THE SIGNING FRAME PRIOR TO INSTALLATION.

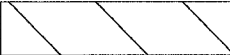


STAGE 2 NOTES

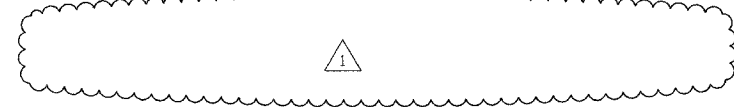


DATE	
BY	
REVISIONS	
1. NOTED	
2. ALIGNED	
3. CHECKED	
4. APPROVED	
5. FILED	
6. NAME	
PLAN	
NOTE BOOK	
NO.	

DATE	
BY	
REVISIONS	
1. NOTED	
2. ALIGNED	
3. CHECKED	
4. APPROVED	
5. FILED	
6. NAME	
PROFILE	
NOTE BOOK	
NO.	



-  CONSTRUCTION AREA
-  TYPE II BARRICADE, DRUM OR VERTICAL BARRICADE WITH STEADY BURN MONODIRECTIONAL LIGHT
-  DIRECTION INDICATOR BARRICADE WITH STEADY BURN MONODIRECTIONAL LIGHT



 ADDENDUM 1 - 1-3-08

ILLINOIS DEPARTMENT OF TRANSPORTATION
MAINTENANCE OF TRAFFIC
 I-90/94 KENNEDY EXPRESSWAY
 STAGE 2
 STA. 20+00 TO STA. 35+00
 SCALE : 1" = 50'
 DATE : 10/31/07
 DRAWN BY : DLZ
 CHECKED BY : GB