

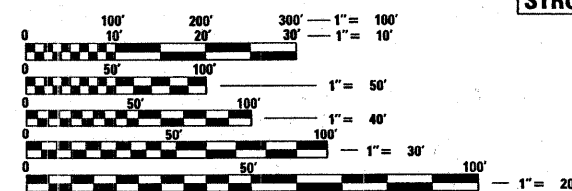
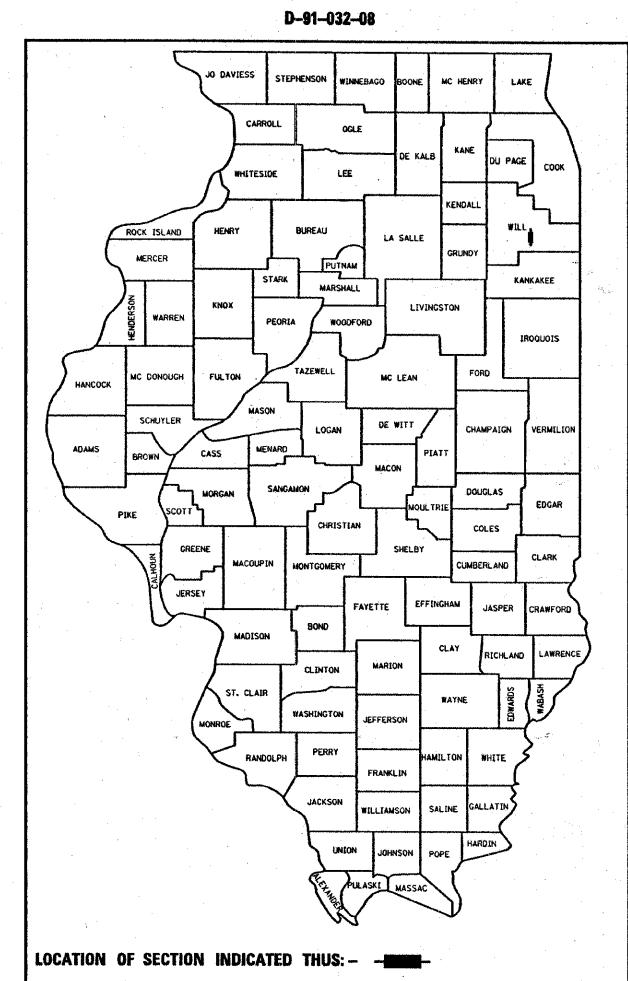
STATE OF ILLINOIS  
 DEPARTMENT OF TRANSPORTATION  
 DIVISION OF HIGHWAYS

F.A.P. RTE.	SECTION	COUNTY	TOTAL SHEETS	SHEET NO.
330	105 B(1&2)R-1	WILL	33	1
FED. ROAD DIST. NO. 1		ILLINOIS	CONTRACT NO. 60D50	

FOR INDEX OF SHEETS, SEE SHEET NO. 2

**PROPOSED  
 HIGHWAY PLANS**  
**F.A.P. 330 /US 45 (LA GRANGE RD.)  
 OVER N. BRANCH PRAIRIE CREEK  
 AND PRAIRIE CREEK  
 BRIDGE BEAM AND DECK REPLACEMENT  
 SECTION NO.: 105 B(1&2)R-1  
 STRUCTURE NO.: 099-0118, 099-0119  
 WILL COUNTY  
 C-91-032-08**

IMPROVEMENT LOCATED IN THE  
 VILLAGE OF FRANKFORT



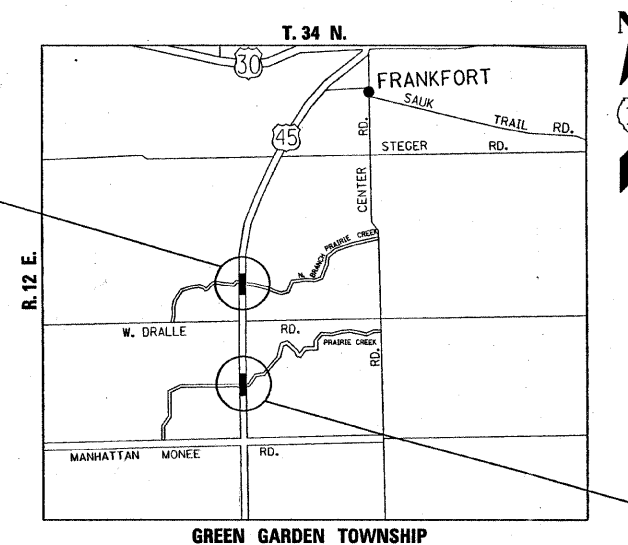
FULL SIZE PLANS HAVE BEEN PREPARED USING STANDARD ENGINEERING SCALES. REDUCED SIZED PLANS WILL NOT CONFORM TO STANDARD SCALES. IN MAKING MEASUREMENTS ON REDUCED PLANS, THE ABOVE SCALES MAY BE USED.

J.U.L.I.E.  
 JOINT UTILITY LOCATION INFORMATION FOR EXCAVATION  
 1-800-892-0123  
 OR 811

PROJECT ENGINEER: J. CHANG (847) 705-4432  
 PROJECT MANAGER: KEN ENG (847) 705-4247

CONTRACT NO. 60D50

IMPROVEMENT LOCATION  
 STRUCTURE NO.: 099-0118



TRAFFIC DATA:  
 2005 ADT - 7100  
 SPEED LIMIT - 50 MPH

IMPROVEMENT LOCATION  
 STRUCTURE NO.: 099-0119

GROSS AND NET LENGTH OF IMPROVEMENT - 204 LIN. FT. = .04 MI.

STATE OF ILLINOIS  
 DEPARTMENT OF TRANSPORTATION  
 DIVISION OF HIGHWAYS

SUBMITTED Nov 13 20 07  
Dione O'Keefe/ed  
 DEPUTY DIRECTOR OF HIGHWAYS, REGION ENGINEER

December 7, 20 07  
Eric E. Harms/ed  
 SENIOR ENGINEER OF DESIGN AND ENVIRONMENT

December 7, 20 07  
Christine M. Reed/ed  
 DIRECTOR OF HIGHWAYS, CHIEF ENGINEER

PRINTED BY THE AUTHORITY  
 OF THE STATE OF ILLINOIS