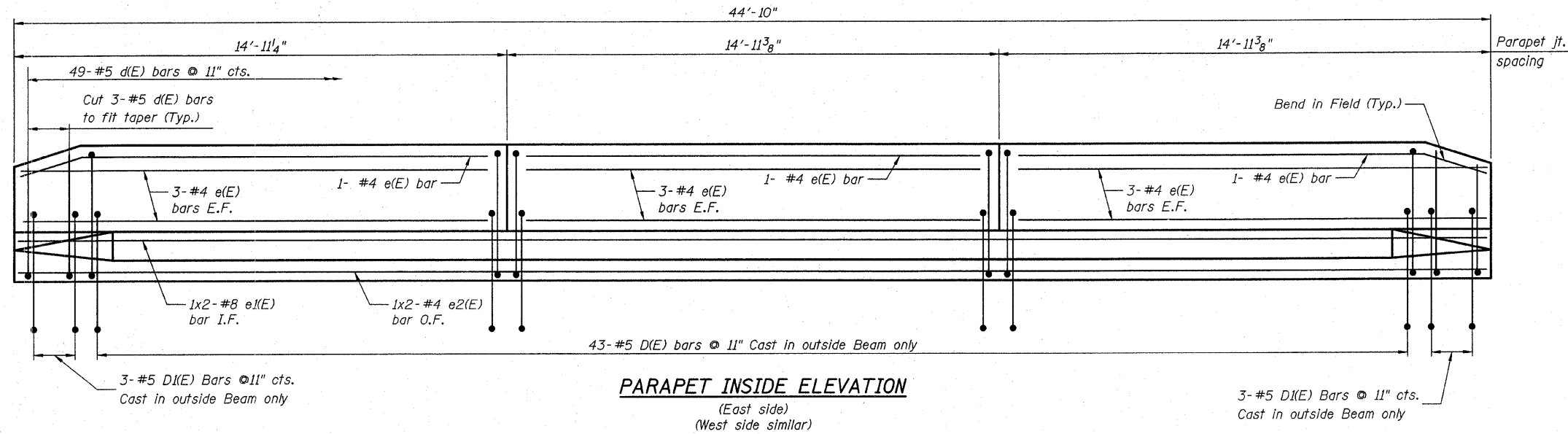


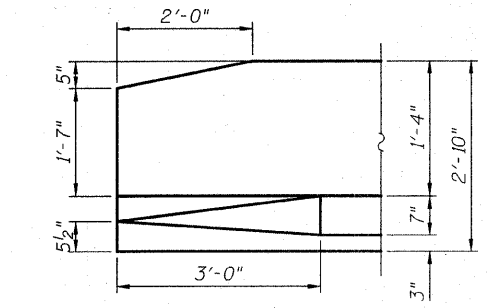
STATE OF ILLINOIS  
DEPARTMENT OF TRANSPORTATION

|                       |         |          |                  |           |                         |
|-----------------------|---------|----------|------------------|-----------|-------------------------|
| ROUTE NO.             | SECTION | COUNTY   | TOTAL SHEETS     | SHEET NO. | SHEET NO. 6<br>9 SHEETS |
| FAP 330               | 105B-IR | WILL     | 33               | 15        |                         |
| FED. ROAD DIST. NO. 7 |         | BILL NO. | FED. AID PROJECT |           |                         |

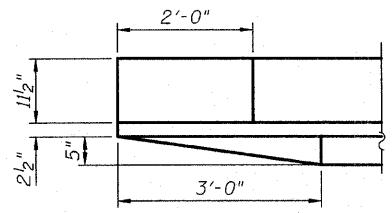
Contract # 60D50



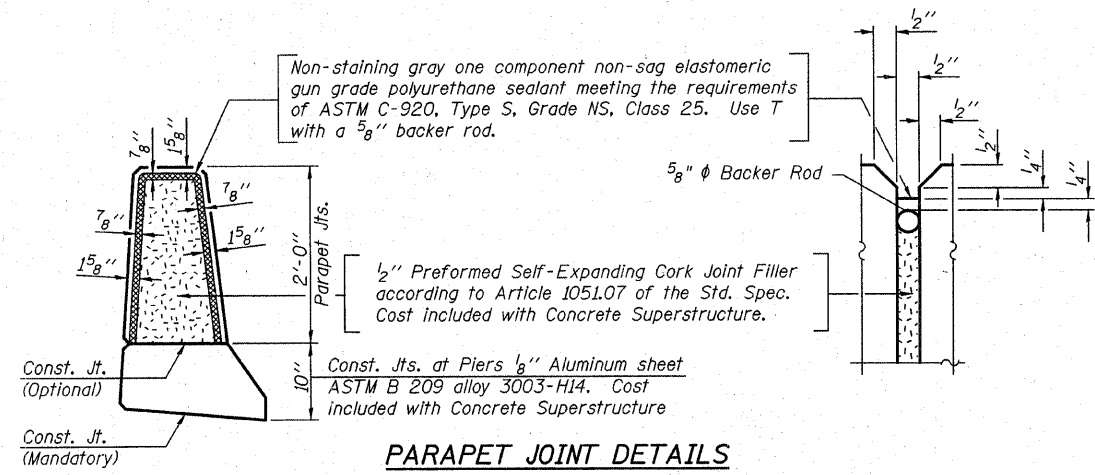
**PARAPET INSIDE ELEVATION**  
(East side)  
(West side similar)



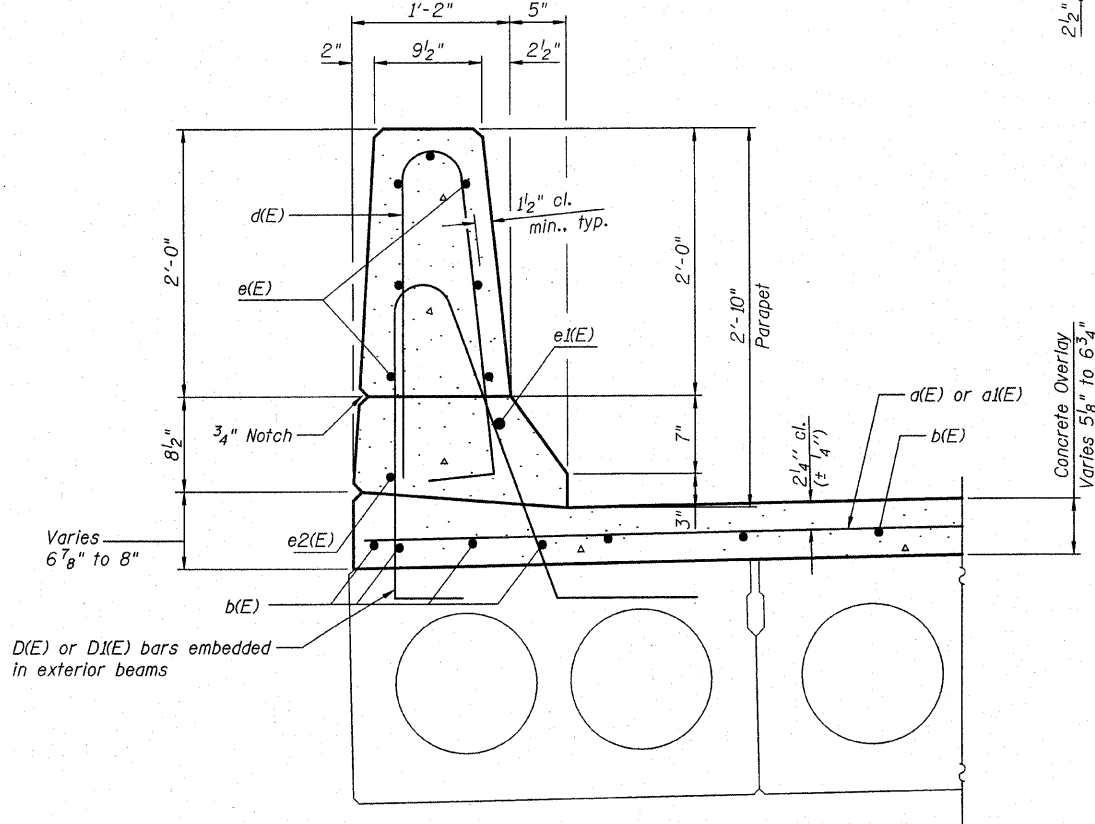
**ELEVATION**



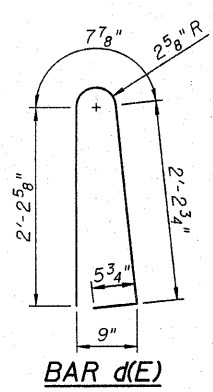
**PLAN**  
**PARAPET END DETAILS**



**PARAPET JOINT DETAILS**



**SECTION THRU PARAPET**



**BAR d(E)**

**BILL OF MATERIAL**

| Bar                              | No. | Size | Length  | Shape |
|----------------------------------|-----|------|---------|-------|
| d(E)                             | 45  | #4   | 19'-11" | —     |
| a1(E)                            | 45  | #4   | 21'-5"  | —     |
| b(E)                             | 96  | #4   | 23'-1"  | —     |
| d(E)                             | 98  | #5   | 5'-7"   | U     |
| e(E)                             | 42  | #4   | 14'-7"  | —     |
| e1(E)                            | 4   | #8   | 24'-6"  | —     |
| e2(E)                            | 4   | #4   | 23'-1"  | —     |
| Reinforcement Bars, Epoxy Coated |     |      | Pound   | 4,030 |
| Concrete Superstructure          |     |      | Cu. Yd. | 10.0  |
| Concrete Wearing Surface (5")    |     |      | Sq. Yd. | 209   |
| Bar Splicers                     |     |      | Each    | 45    |
| Bridge Deck Grooving             |     |      | Sq. Yd. | 183   |
| Protective Coat                  |     |      | Sq. Yd. | 230   |

Notes:  
1. Bars Indicated thus 1x2- #5 etc. indicates 1 line of bars with 2 lengths per line.

|                   |         |
|-------------------|---------|
| <b>LAP LENGTH</b> |         |
| #4 bars           | - 1'-8" |
| #8 bars           | - 4'-6" |

|          |            |
|----------|------------|
| DESIGNED | B. Sauter  |
| CHECKED  | E. Mroczek |
| DRAWN    | R. Danley  |
| CHECKED  | B. Sauter  |

**Giorba Group, Inc.**  
CONSULTING ENGINEERS  
5507 North Cumberland Avenue, Suite 402 Chicago, Illinois 60656  
Tel. 773.776.4009 Fax 773.776.4014 Email chicago@giorba.com

**PARAPET DETAILS**  
**US RTE 45 OVER NORTH**  
**BRANCH OF PRAIRIE CREEK**  
**F.A.P. RT. 330**  
**SECTION 105B-IR**  
**WILL COUNTY**  
**STA. 259+37.00**  
**S.N. 099-0118**

10/17/2007 rcdanley c:\p\3329\3329\_04\design\structural\cad\dwt\3329\_04\_06 Parapet Details.dwt