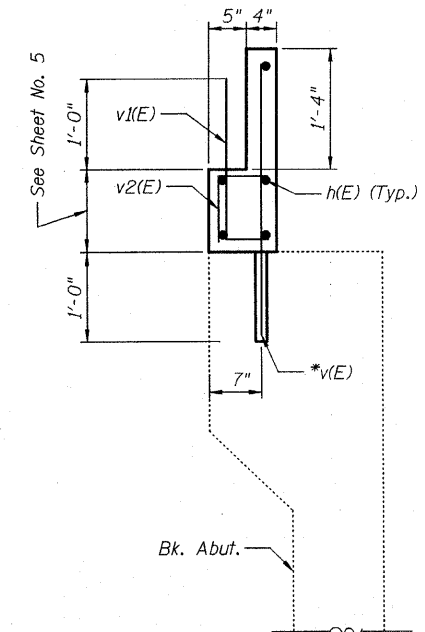
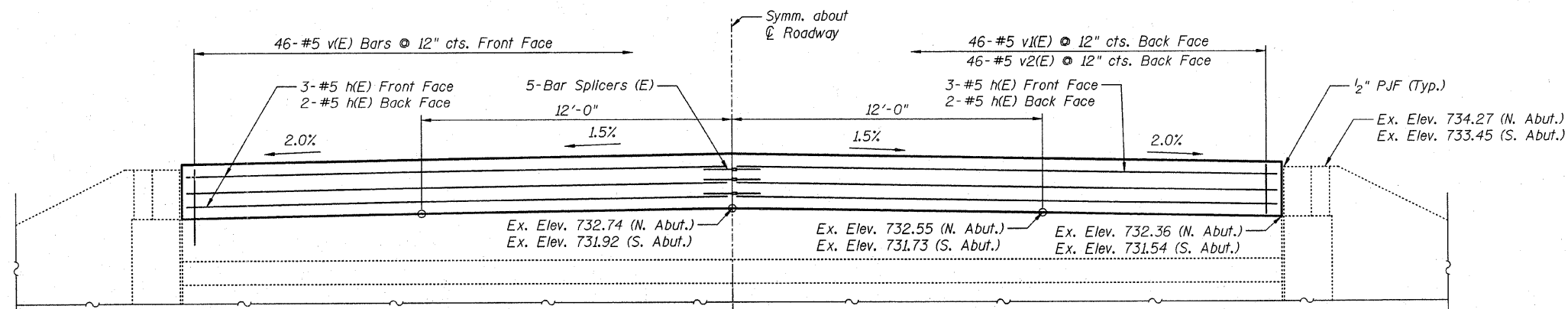


STATE OF ILLINOIS  
DEPARTMENT OF TRANSPORTATION

ROUTE NO.	SECTION	COUNTY	TOTAL SHEETS	SHEET NO.
FAP 330	105B-1R	WILL	33	17
FED. ROAD DIST. NO. 7	ILLINOIS	FED. AID PROJECT-		

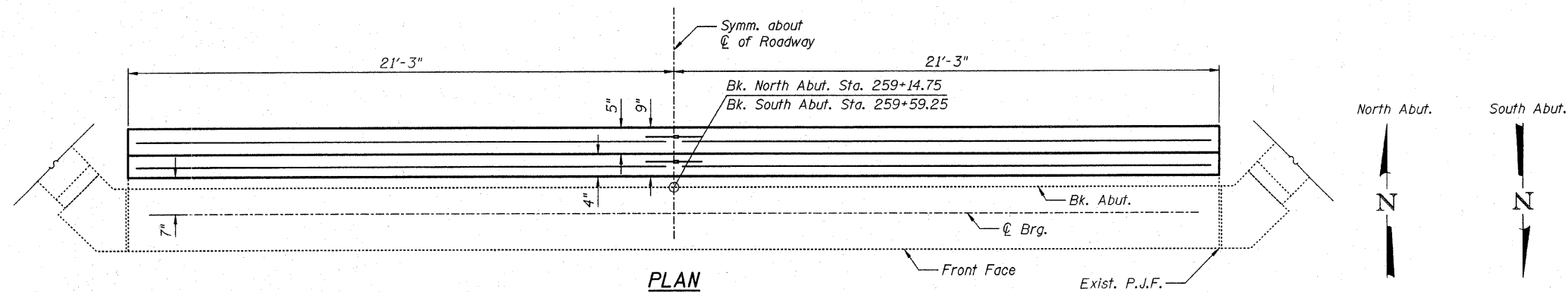
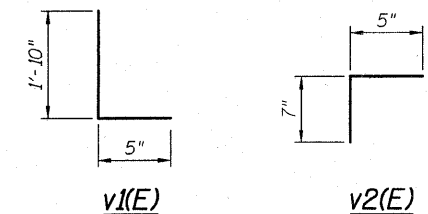
SHEET NO. 8  
9 SHEETS

Contract # 60D50



**SECTION THROUGH ABUTMENT**

\* Drill and grout v(E) bars 12" min. in accordance with Article 584 of the Standard Specifications.



**BILL OF MATERIAL**

Bar	No.	Size	Length	Shape	
h(E)	20	#5	20'-11"	—	
v(E)	92	#5	3'-0"	—	
v1(E)	92	#5	2'-3"	—	
v2(E)	92	#5	1'-0"	—	
Reinforcement Bars, Epoxy Coated				Pound	1.040
Concrete Superstructures				Cu. Yd.	3.6
Bar Splicers				Each	10

**NORTH & SOUTH ABUTMENTS  
US RTE 45 OVER NORTH  
BRANCH OF PRAIRIE CREEK  
F.A.P. RT. 330  
SECTION 105B-1R  
WILL COUNTY  
STA. 259+37.00  
S.N. 099-0118**

DESIGNED	B. Sauter
CHECKED	E. Mroczek
DRAWN	R. Danley
CHECKED	B. Sauter

**Ciorba Group, Inc.**  
CONSULTING ENGINEERS  
5507 North Cumberland Avenue, Suite 402 Chicago, Illinois 60656  
Tel. 773.775.4009 Fax 773.775.4014 Email chicago@ciorba.com

10/17/2007 rdanley  
c:\prow\3329\3329\_04\design\structural\cad\sh1\3329\_04\_08 North and South Abut.sht