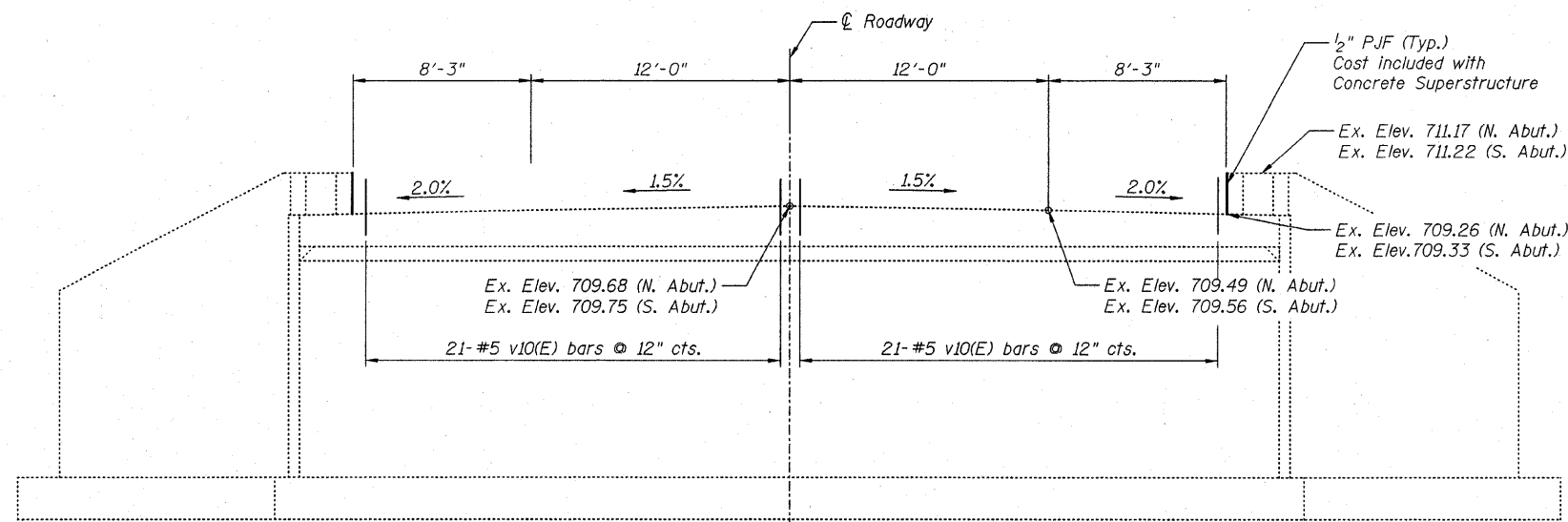


STATE OF ILLINOIS
DEPARTMENT OF TRANSPORTATION

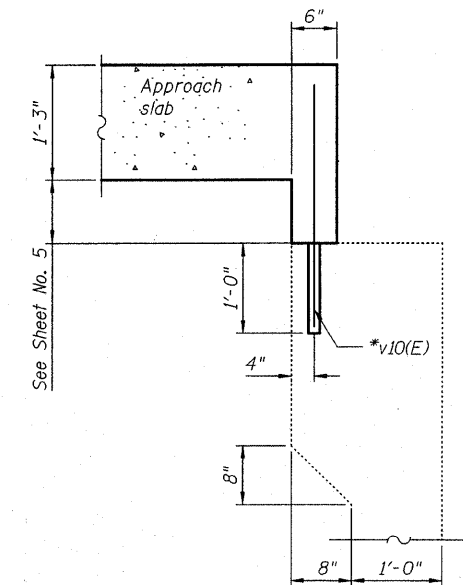
ROUTE NO.	SECTION	COUNTY	TOTAL SHEETS	SHEET NO.	SHEET NO. 8
FAP 330	105B-IR	WILL	33	26	9 SHEETS
FED. ROAD DIST. NO. 7	ILLINOIS	FED. AID PROJECT-			

Contract # 60D50



ELEVATION

Existing elevations were taken from the existing drawings and adjusted to project datum.



SECTION THRU ABUTMENT

* Drill and grout v10(E) bars min. 12" in accordance with Article 584 of the Standard Specifications.

BILL OF MATERIAL

Bar	No.	Size	Length	Shape	
v10(E)	84	#5	2'-9 1/2"	—	
Reinforcement Bars, Epoxy Coated				Pound	250

**NORTH & SOUTH ABUTMENTS
US RTE 45 OVER PRAIRIE CREEK
F.A.P. RT. 330
SECTION 105B-IR
WILL COUNTY
STA. 320+52.00
S.N. 099-0119**

DESIGNED	B. Sauter
CHECKED	E. Mroczek
DRAWN	R. Danley
CHECKED	E. Mroczek

Ciorba Group, Inc.
CONSULTING ENGINEERS
5507 North Cumberland Avenue, Suite 402 Chicago, Illinois 60656
Tel. 773.775.4009 Fax 773.775.4014 Email chicago@ciorba.com

10/17/2007 rdanley m:\p\proj\3329\3329_05\design\structural\cad\shh\3329_05_08 North and South Abutments