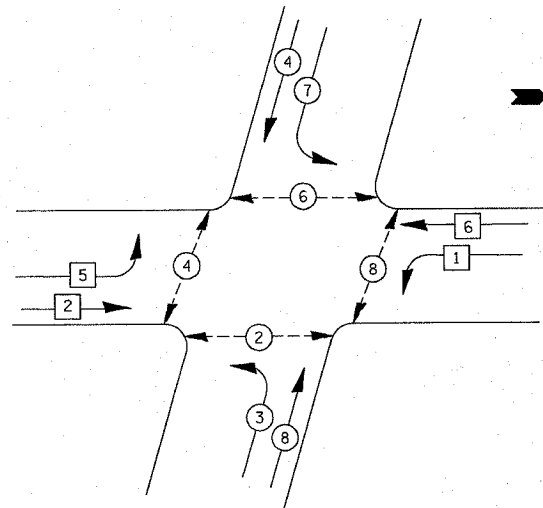


CONTROLLER SEQUENCE

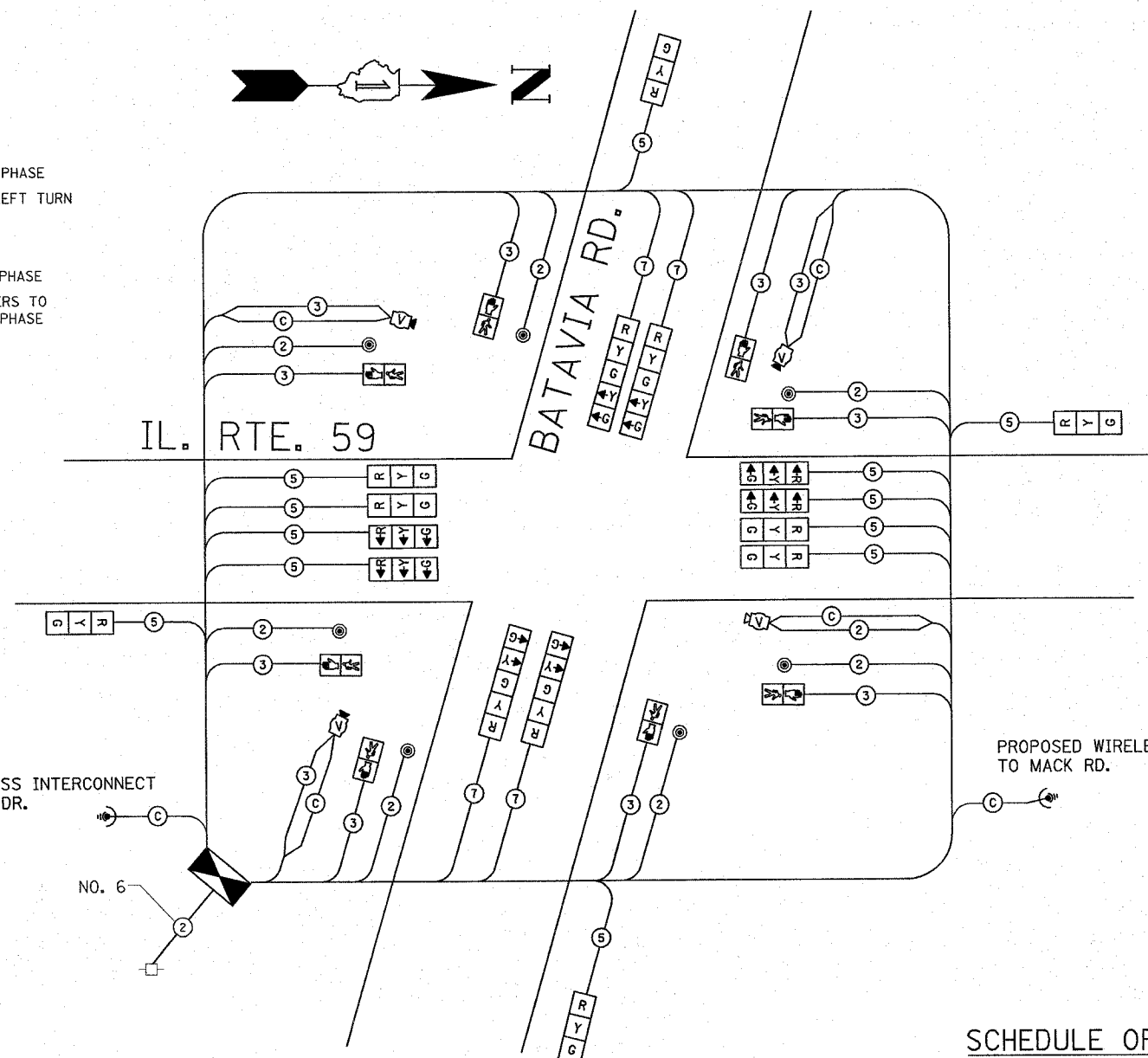


TEMPORARY PHASE DESIGNATION DIAGRAM

- LEGEND**
- ⊛ DUAL ENTRY PHASE
 - ⊛ PROTECTED LEFT TURN PHASE
 - OL OVERLAP
 - ⊛ PEDESTRIAN PHASE
 - * NUMBER REFERS TO ASSOCIATED PHASE



PROPOSED WIRELESS INTERCONNECT TO CONTINENTAL DR.



PROPOSED WIRELESS INTERCONNECT TO MACK RD.

TEMPORARY CABLE DIAGRAM LEGEND

- | | PROPOSED | EXISTING |
|--|----------|----------|
| TEMPORARY CONTROLLER CABINET | ⊞ | ⊞ |
| TEMPORARY SERVICE INSTALLATION, (P) POLE OR (G) GROUND MOUNT | ⊞ | P |
| TEMPORARY TRAFFIC SIGNAL SECTION OR PEDESTRIAN SIGNAL SECTION, 12" (300 mm) | R | R |
| 12" (300 MM) PEDESTRIAN SIGNAL SECTION | ⊞ | ⊞ |
| ELECTRIC CABLE IN CONDUIT, NO. 14, UNLESS OTHERWISE NOTED. NUMBER OF CONDUCTORS AS NOTED | 2 | 2 |
| PEDESTRIAN PUSHBUTTON DETECTOR | ⊞ | ⊞ |
| VEHICLE DETECTOR, INDUCTION LOOP | ⊞ | ⊞ |
| MICROWAVE VEHICLE SENSOR | ⊞ | ⊞ |
| VIDEO DETECTOR | ⊞ | ⊞ |
| CLOSED CIRCUIT TV | ⊞ | ⊞ |
| EMERGENCY VEHICLE SYSTEM DETECTOR | ⊞ | ⊞ |
| CONFIRMATION BEACON | ⊞ | ⊞ |
| WIRELESS INTERCONNECT (ANTENNA) | ⊞ | ⊞ |

SCHEDULE OF QUANTITIES

ITEM	UNIT	QUANTITY
TEMPORARY TRAFFIC SIGNAL	EACH	1

I.O.O.T. TRAFFIC SIGNAL INSTALLATION ELECTRICAL SERVICE REQUIREMENTS					TOTAL WATTAGE
TYPE	NO. LAMPS	WATTAGE INCAND.	WATTAGE LED	% OPERATION	
SIGNAL (RED)	14	135	17	0.50	119.00
(YELLOW)	14	135	25	0.25	87.50
(GREEN)	14	135	15	0.25	52.50
ARROW	20	135	12	0.10	24.00
PED. SIGNAL	8	90	25	1.00	200.00
CONTROLLER	1	100	100	1.00	100.00
ILLUM. SIGN		84		0.05	
TOTAL =					583.00

NOTE: THE TRAFFIC SIGNAL CONTROL EQUIPMENT FOR THIS PROJECT IS "EAGLE" TO MATCH THE EXISTING ADJACENT SYSTEM.

FOUNDATION (DEPTH)	FT. (m)	CABLE SLACK	FT. (m)	VERTICAL	FT. (m)
TYPE A - POST	4 (1.2)	HANDHOLE	6.5 (2.0)	ALL FOUNDATIONS	3.5 (1.0)
D - CONTROLLER	4 (1.2)	DOUBLE HANDHOLE	13 (4.0)	MAST ARM (L) POLE	20'±L-2=
E - M. ARM POLE		SIGNAL POST	2 (0.6)	(6m±L-0.6m)=	
24" (600mm)	10 (3.0)	CONTROLLER CAB.	1 (0.5)	BRACKET MOUNTED	13 (4.0)
30" (750mm)	15 (4.6)	FIBER OPTIC	13 (4.0)	PED. PUSHBUTTON	4 (1.2)
36" (900mm)	15 (4.6)	ELECTRIC SERVICE	1 (0.5)	ELECTRIC SERVICE	13.5 (4.1)
		GROUND CABLE	1 (0.5)	SERVICE TO GROUND	13.5 (4.1)
				POST MOUNTED	6 (1.8)

RESTORATION OF WORK AREA. RESTORATION OF THE TRAFFIC SIGNAL WORK AREA SHALL BE INCLUDED IN THE RELATED PAY ITEMS SUCH AS FOUNDATION, CONDUIT, HANDHOLE, TRENCH AND BACKFILL, ETC. ALL ROADWAY SURFACES SUCH AS SHOULDERS, MEDIANS, SIDEWALKS, PAVEMENT, ETC. SHALL BE REPLACED IN KIND. ALL DAMAGE TO MOWED LAWNS SHALL BE REPLACED WITH AN APPROVED SOD AND ALL DAMAGE TO UNMOWED FIELDS SHALL BE SEEDED. RESTORATION OF THE WORK AREA SHALL BE INCIDENTAL TO THE CONTRACT WITHOUT ANY EXTRA COMPENSATION ALLOWED TO THE CONTRACTOR.

REVISIONS		ILLINOIS DEPARTMENT OF TRANSPORTATION
NAME	DATE	
		<p align="center">TEMPORARY CABLE AND PHASE DESIGNATION DIAGRAM IL. RTE. 59 AT BATAVIA RD.</p> <p>SCALE: _____</p> <p>DATE: 11/19/2007</p> <p align="right">DRAWN BY: BCK DESIGNED BY: BCK CHECKED BY: DAD</p>

c:\projects\traffic\1159\batavia\dgn