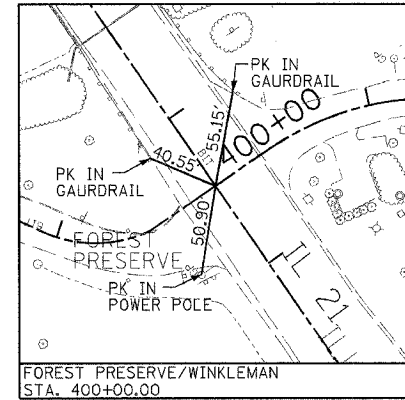
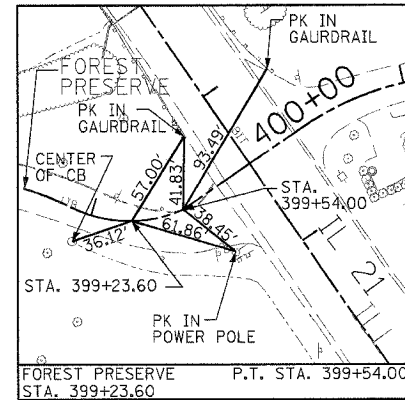
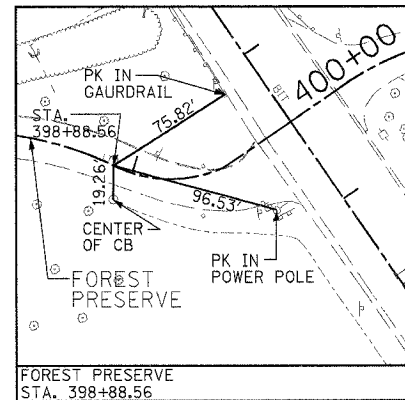
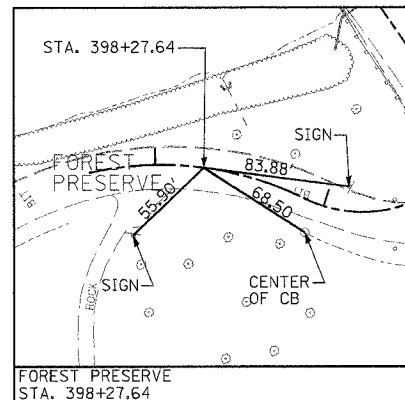
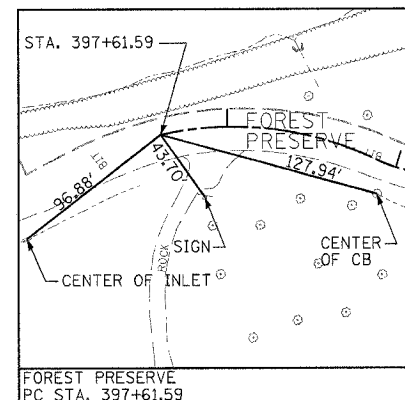
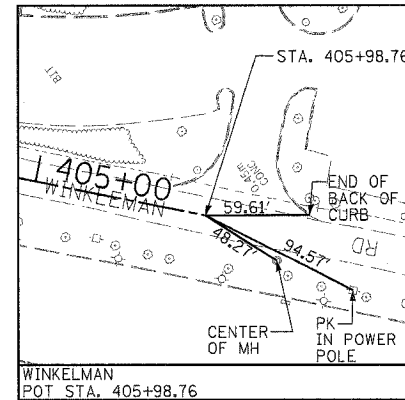
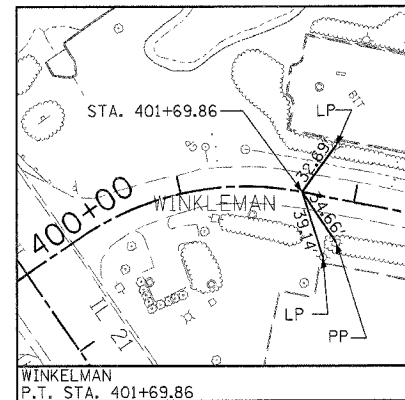
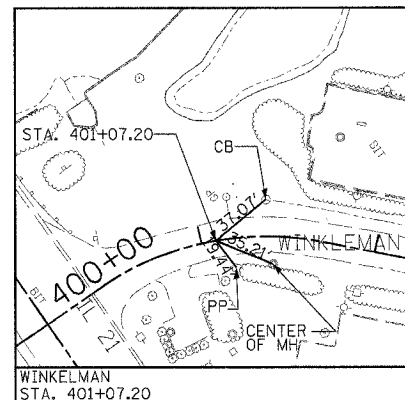
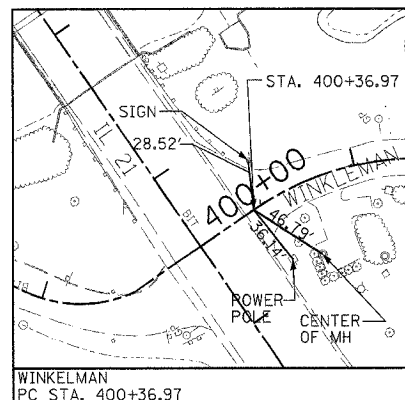
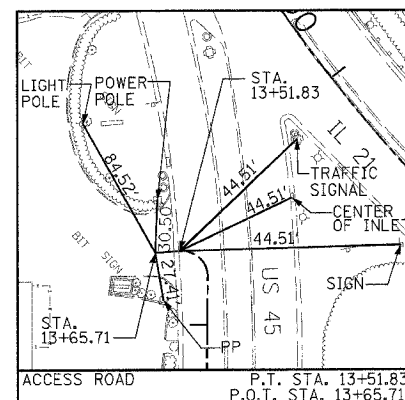
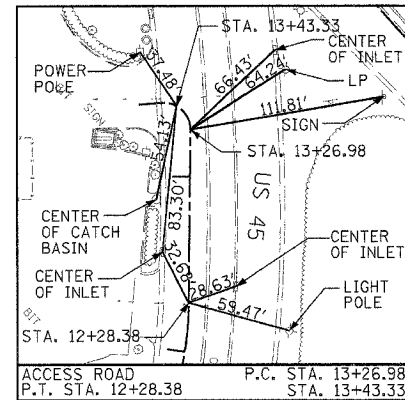
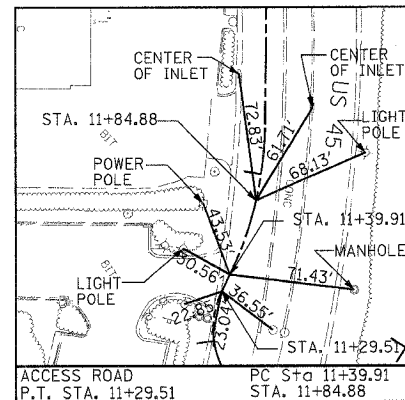
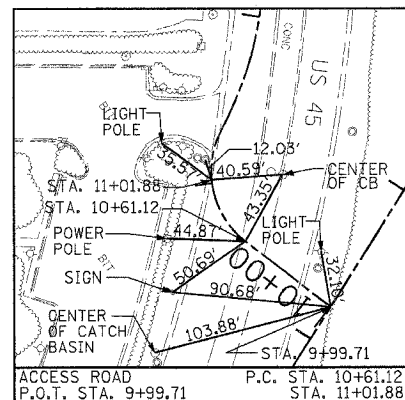
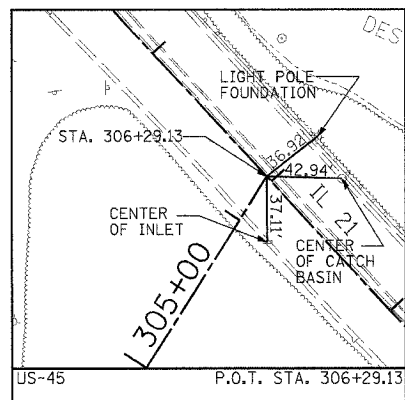
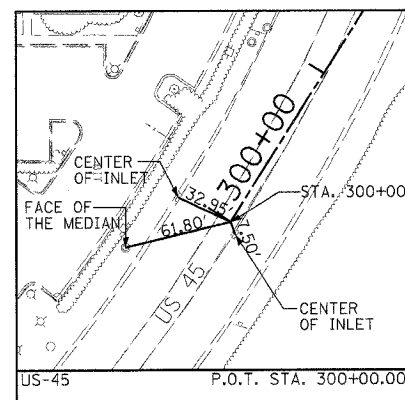


F.A.P. RTE.	SECTION	COUNTY	TOTAL SHEETS	SHEET NO.
374	2007-060 I	COOK	21	6
STA.		TO STA.		
FED. ROAD DIST. NO.	ILLINOIS	FED. AID PROJECT		
CONTRACT NO. 60080				



ALIGNMENT TIES

DELTA ENGINEERING, INC.
 CONSULTING ENGINEERS, CONSTRUCTION MANAGERS, SURVEYORS
 111 W. JACKSON BLVD., SUITE 910 CHICAGO, IL 60604-2001
 Ph: 312-377-7700 Fax: 312-427-4143

STV Incorporated 200 W Monroe - Suite 1650
 Chicago, Illinois 60606
 engineers/architects/scientists/construction managers

REVISIONS	
NAME	DATE

ILLINOIS DEPARTMENT OF TRANSPORTATION
ALIGNMENT, TIES AND BENCHMARKS
 ILLINOIS ROUTE 21

DATE: 10-26-07
 DRAWN BY: DK
 CHECKED BY: JA/GC

0 50' 100'
 1" = 50'