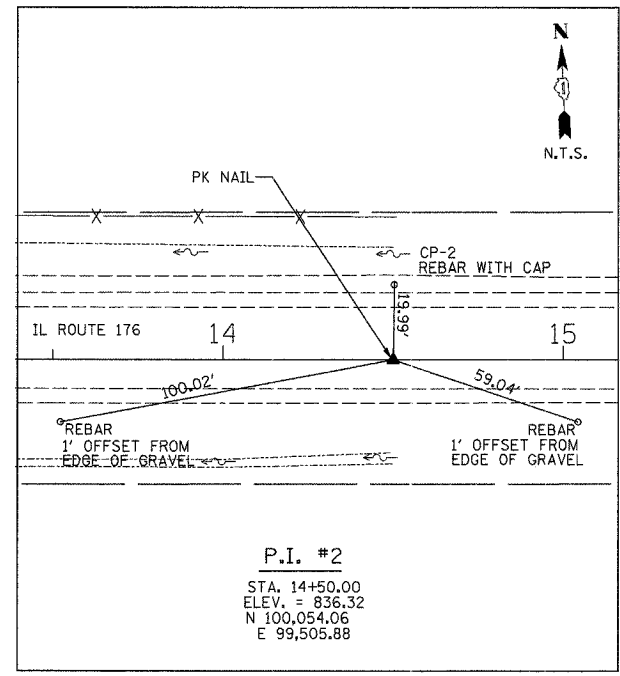
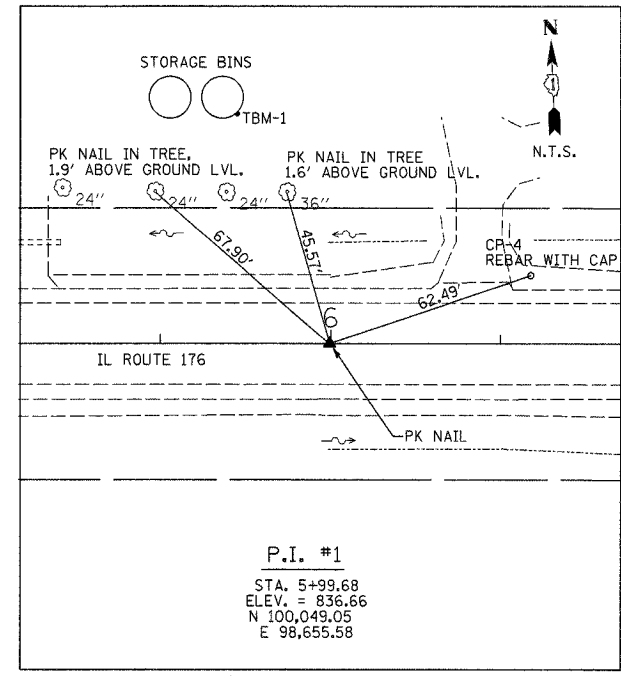
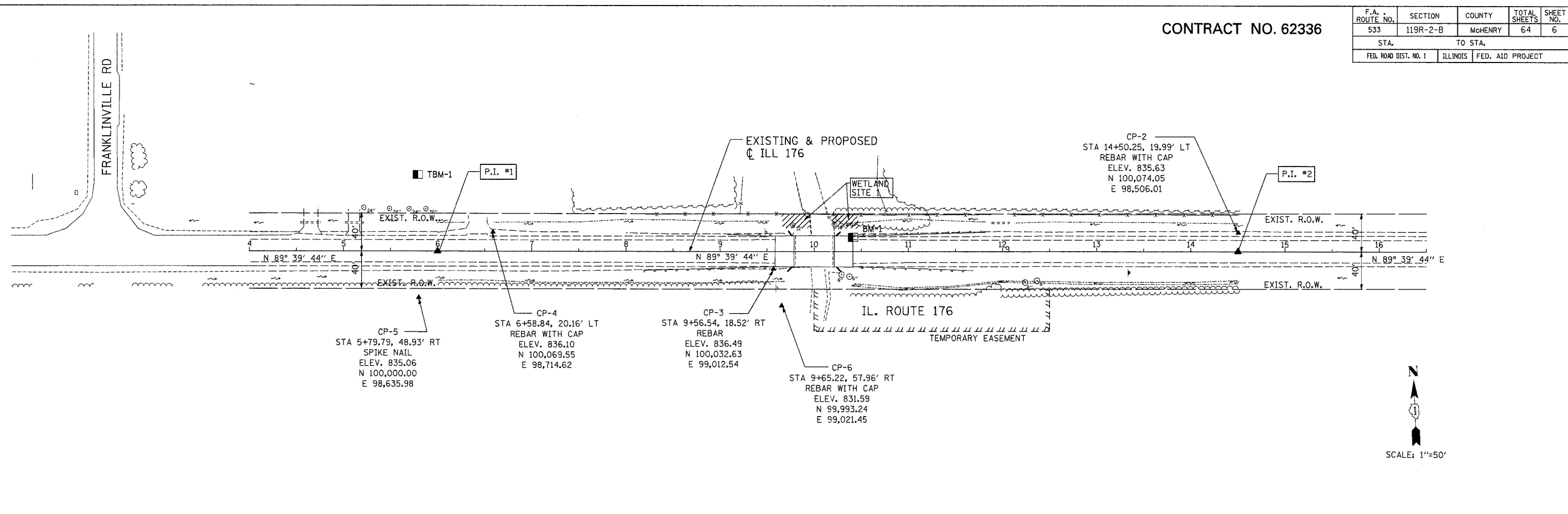


CONTRACT NO. 62336

F.A. ROUTE NO.	SECTION	COUNTY	TOTAL SHEETS	SHEET NO.
533	119R-2-B	McHENRY	64	6
STA.		TO STA.		
FED. ROAD DIST. NO. 1		ILLINOIS	FED. AID PROJECT	



BENCH MARKS		
NO.	DESCRIPTION	ELEVATION
BM-1	NORTH-WEST CORNER OF EAST APPROACH SLAB STA. 10+40.89, 16.49' LT	836.86
TBM-1	SET CHISELED "□" IN SOUTH FACE OF CONCRETE BASE OF EAST STORAGE BIN STA. 5+80.22, 81.30' LT	836.91

REVISIONS		ILLINOIS DEPARTMENT OF TRANSPORTATION ILLINOIS ROUTE 176 OVER THE KISHWAUKEE RIVER ALIGNMENT, TIES, & BENCH MARKS
NAME	DATE	

SCALE: VERT. _____
 HORIZ. _____
 DATE: 10-05-07
 DRAWN BY: WS
 CHECKED BY: RJS

GRAEF, ANHALT, SCHLOEMER & ASSOCIATES, INC.
 CHICAGO, ILLINOIS