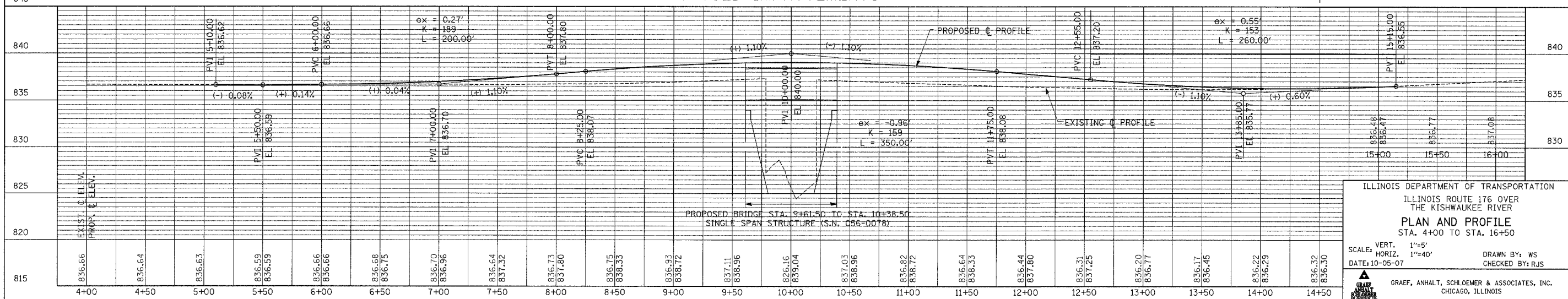
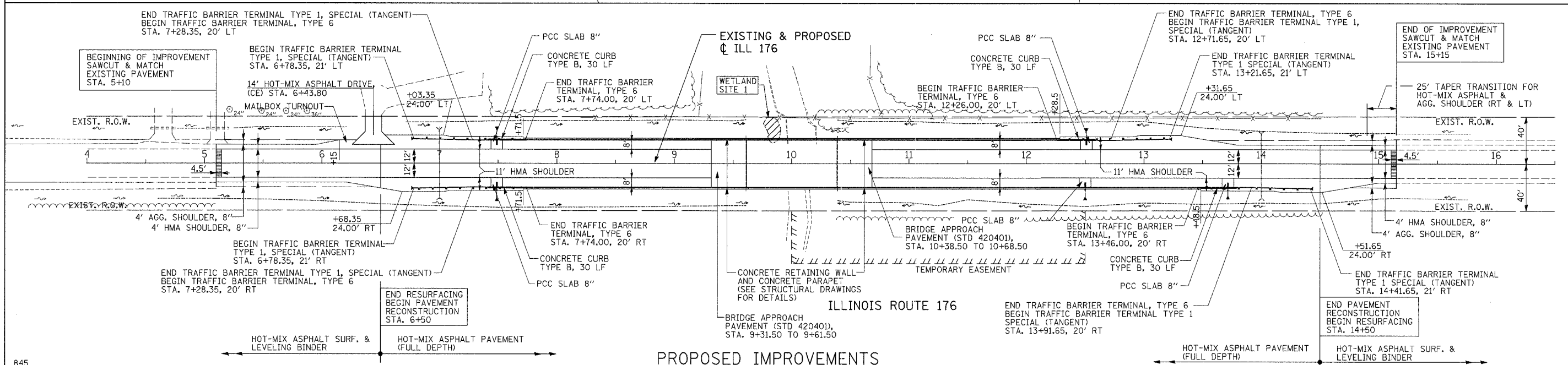
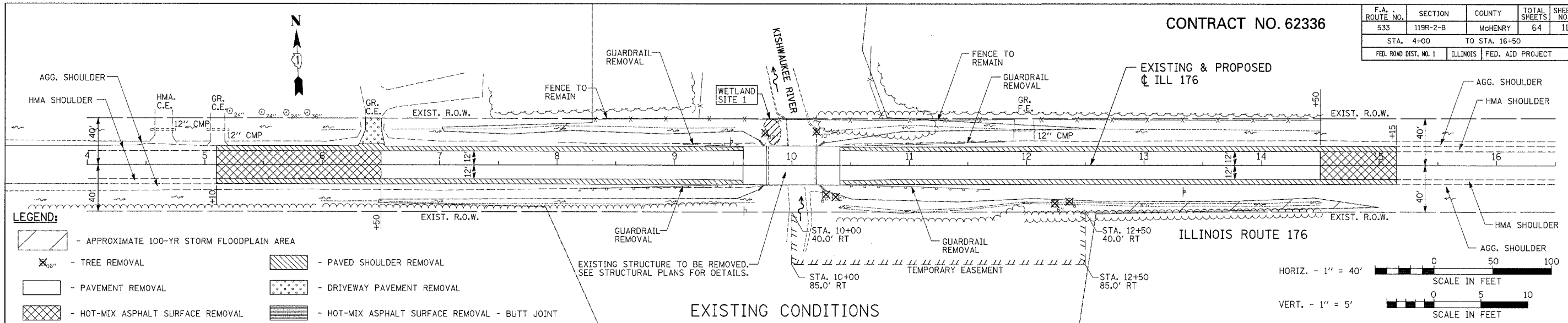


CONTRACT NO. 62336

F.A. ROUTE NO.	SECTION	COUNTY	TOTAL SHEETS	SHEET NO.
533	119R-2-B	McHENRY	64	11
STA. 4+00		TO STA. 16+50		
FED. ROAD DIST. NO. 1		ILLINOIS FED. AID PROJECT		



PLAN AND PROFILE

ILLINOIS DEPARTMENT OF TRANSPORTATION  
 ILLINOIS ROUTE 176 OVER  
 THE KISHWAUKEE RIVER  
**PLAN AND PROFILE**  
 STA. 4+00 TO STA. 16+50

SCALE: VERT. 1"=5'  
 HORIZ. 1"=40'

DATE: 10-05-07  
 DRAWN BY: WS  
 CHECKED BY: RJS

GRAEF, ANHALT, SCHLOEMER & ASSOCIATES, INC.  
 CHICAGO, ILLINOIS

FILE: H:\Jobs\2002\20024023-0\CAD\DOT\_Trane\ dgn\00\plan01.dgn  
 DATE: 05-01-07 14:54