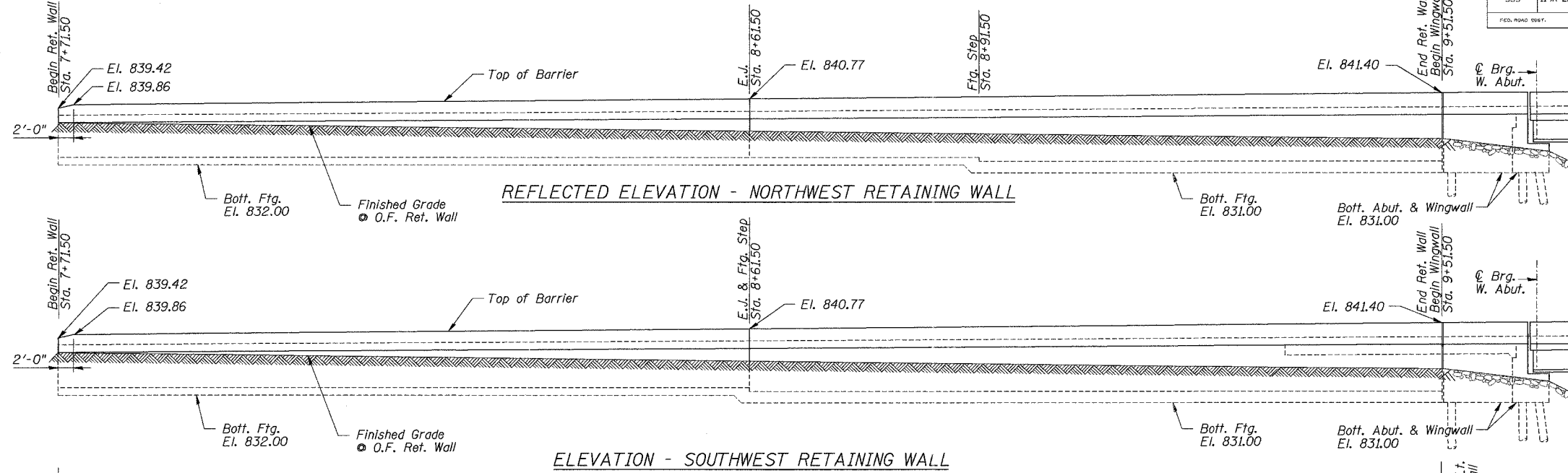


Bench Mark: Chiseled "□" in south face of concrete base of east storage bin located approximately 425' northwest of existing S.N. 056-0005. Elev. 836.91.

ROUTE NO.	SECTION	QUANTITY	TOTAL SHEETS	SHEET NO.
533	119R-2B	McHenry	64	36

Contract #62336



**GENERAL NOTES**

Reinforcement bars shall conform to the requirements of ASTM A 706 Grade 60 (IL Modified). See Special Provisions.

Reinforcement bars designated (E) shall be epoxy coated.

For Total Bill of Material, see Sheet 9 of 12.

**DESIGN SPECIFICATIONS**

AASHTO 17th Edition, 2002

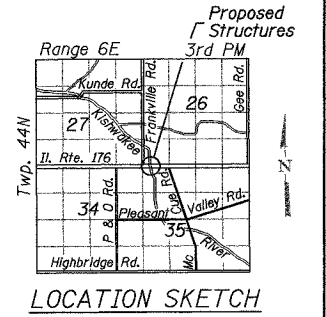
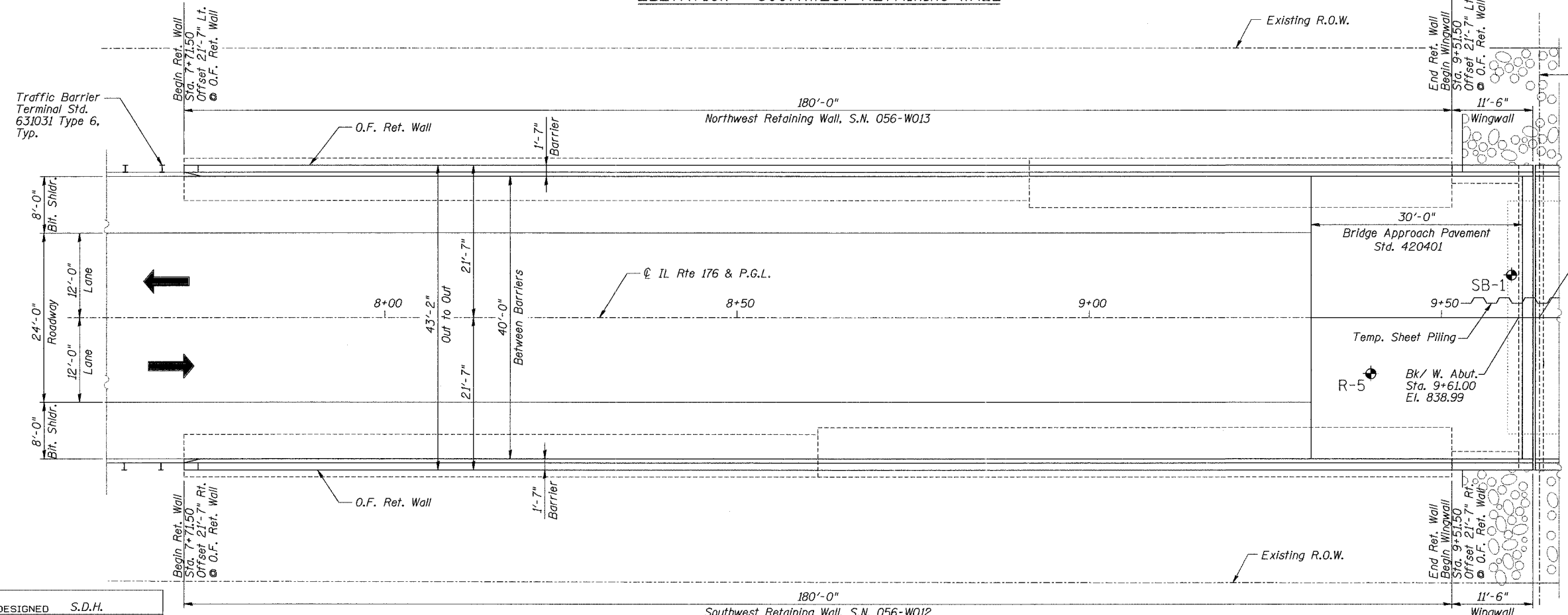
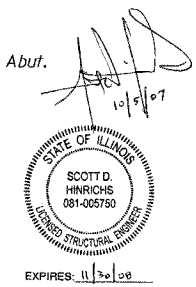
**DESIGN STRESSES**

**FIELD UNITS**

$f'_c = 3,500$  psi  
 $f_y = 60,000$  psi (Reinforcement)

**SEISMIC DATA**

Seismic Performance Category (SPC) = A  
 Bedrock Acceleration Coefficient (A) = 0.035g  
 Site Coefficient (S) = 1.0



DESIGNED	S.D.H.
CHECKED	J.A.Z.
DRAWN	M.S.M.
CHECKED	S.D.H.

**Notes:**

1. E.J. = Expansion Joint

2. For Profile Grade, see Sheet 3 of 12.

**LEGEND**

- Stone Riprap, see Bridge Plans

- Soil Boring  
 (For additional Soil Borings at Bridge, see Bridge Plans.)

**GENERAL PLAN & ELEVATION I  
 RETAINING WALLS**

IL Route 176 over the Kishwaukee River

F.A.P. RTE 533, SECTION 119R-2B  
 McHENRY COUNTY  
 STA. 7+71.50 TO STA. 13+48.50

DATE: 10-05-07

GRAEF, ANHALT, SCHLOEMER & ASSOCIATES INC  
 CHICAGO ILLINOIS