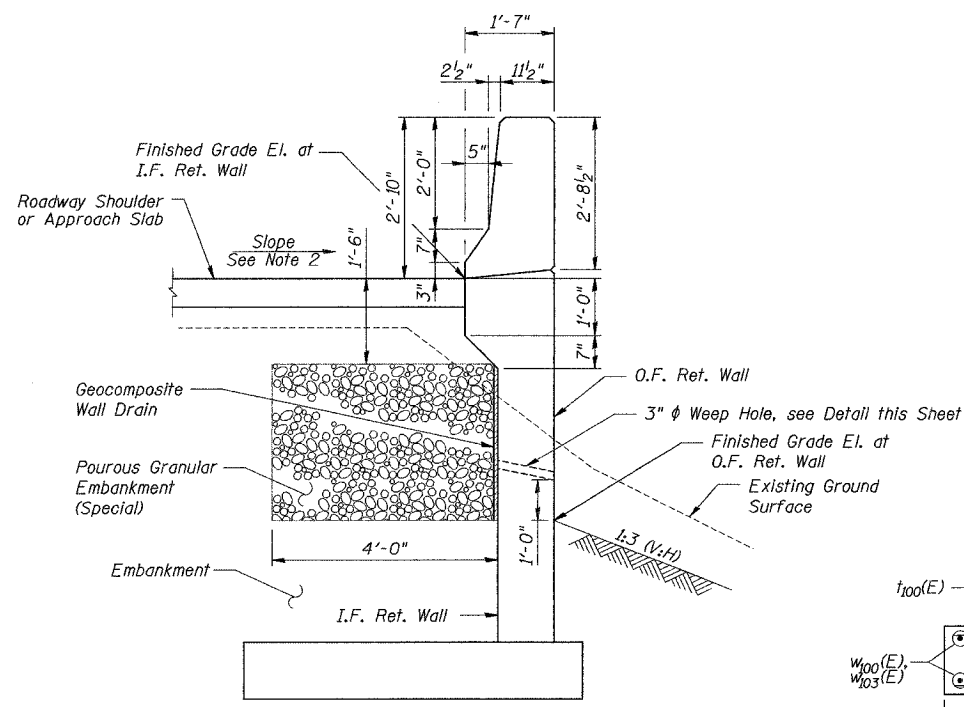


ROUTE NO.	SECTION	COUNTY	SHEET NO.	SHEET
533	119R-2B	McHenry	64	43
FED. ROAD DIST.		ILLINOIS		

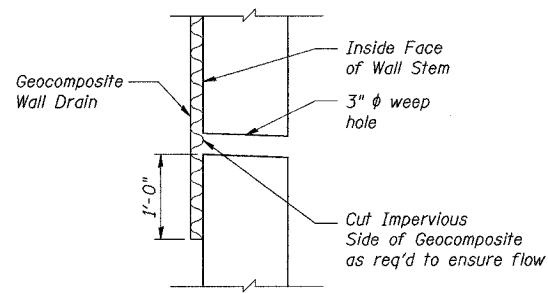
Contract #62336

SHEET NO. 8 OF 12 SHEETS

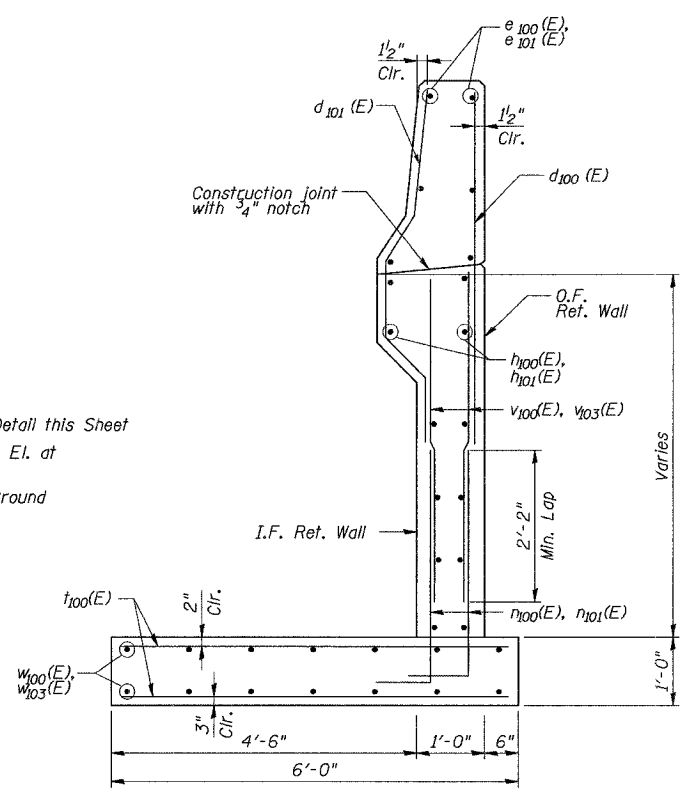


TYPICAL SECTION
(Through Retaining Walls)

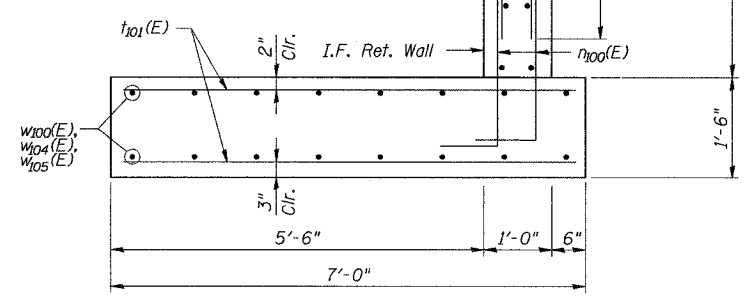
- Notes:**
1. Allowable Equivalent Uniform Soil Bearing Pressure = 2,000 psf
 2. Slope varies from 2.0% to 4.0% at Approach Slab. Slope is 4.0% at Roadway Shoulder.



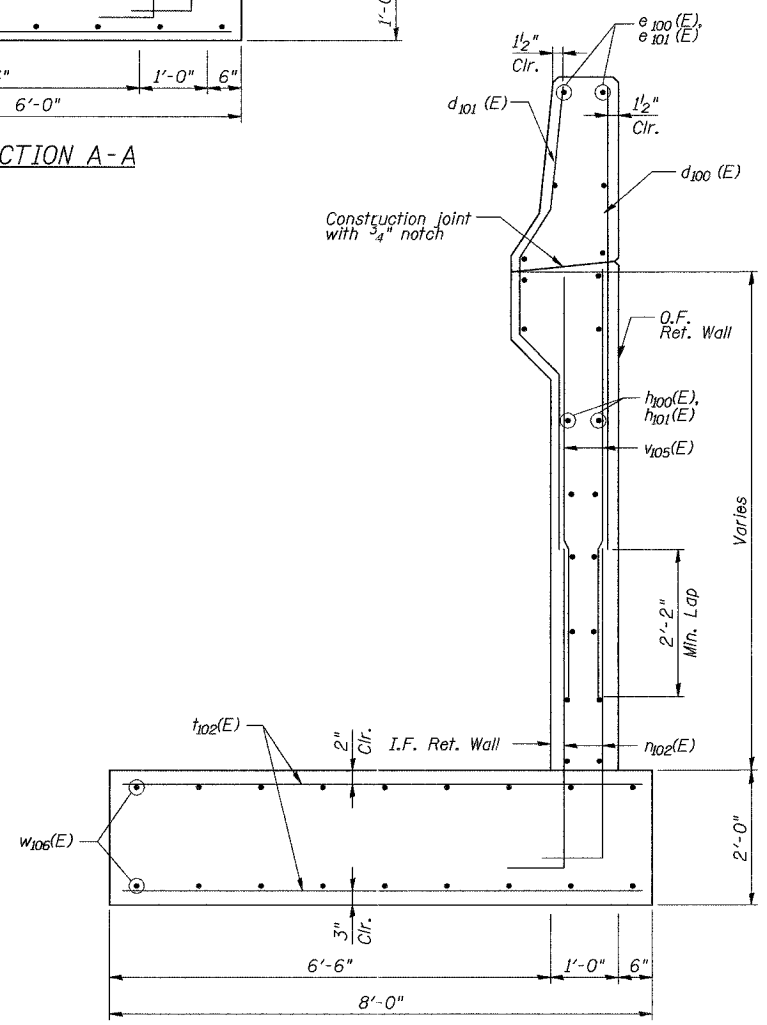
WEEP HOLE DRAIN DETAIL



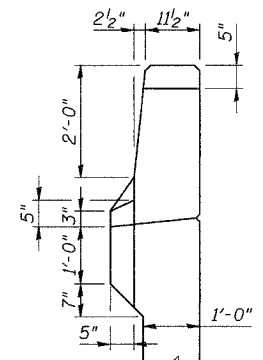
SECTION A-A



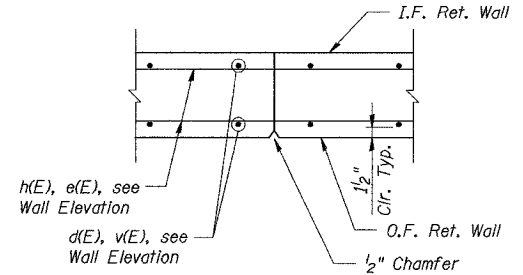
SECTION B-B



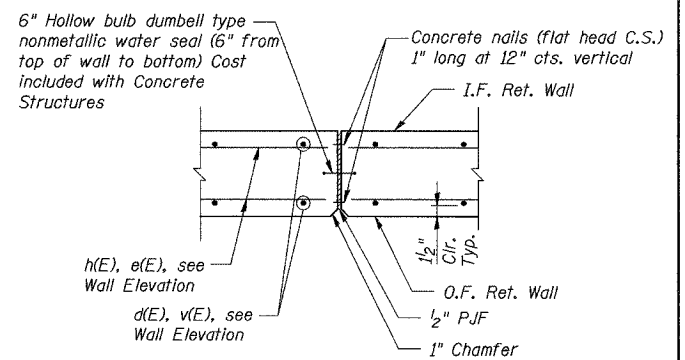
SECTION C-C



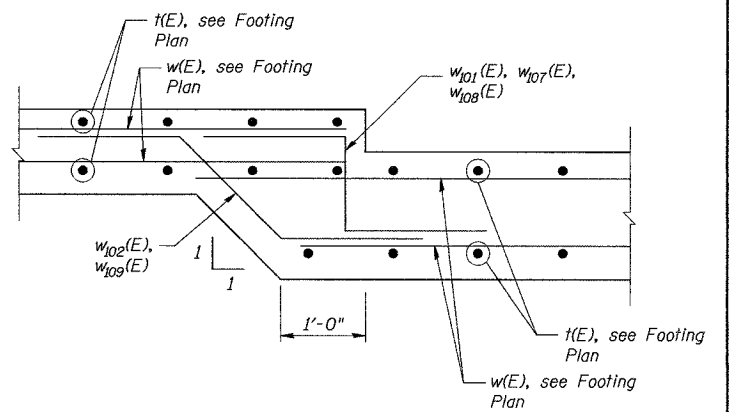
VIEW D-D



CONSTRUCTION JOINT DETAIL



EXPANSION JOINT DETAIL



FOOTING STEP DETAIL

DESIGNED	S.D.H.
CHECKED	J.A.Z.
DRAWN	M.S.M.
CHECKED	S.D.H.

RETAINING WALL DETAILS I
IL Route 176 over the Kishwaukee River
F.A.P. RTE 533, SECTION 119R-2B
McHENRY COUNTY
STA. 7+71.50 TO STA. 13+48.50
DATE: 10-05-07
GRAEF, ANHALT, SCHLOEMER & ASSOCIATES INC
CHICAGO ILLINOIS

P:\1042\2006\p1et\where work\ref\final\8e\Wall\05e-0005-8.rvt
10/24/2007 10:45:58 AM

10/24/2007 10:45:58 AM