

FOR INDEX OF SHEETS, SEE SHEET NO. 2



Jeffrey P. Hilstedt
 JEFFREY P. HILSTEDT, P. E.
 IL. LIC. NO. 062-048426
 EXP. NOV. 30, 2007
 DATE JUNE 20, 2007

STATE OF ILLINOIS
 DEPARTMENT OF TRANSPORTATION
 DIVISION OF HIGHWAYS
**PLANS FOR PROPOSED
 HIGHWAY**

I-80/94/US 6 (KINGERY-BORMAN EXPRESSWAY) WESTBOUND

SECTION : 2003-106-LS

IL 394 TO ILLINOIS/INDIANA STATE LINE

LANDSCAPING

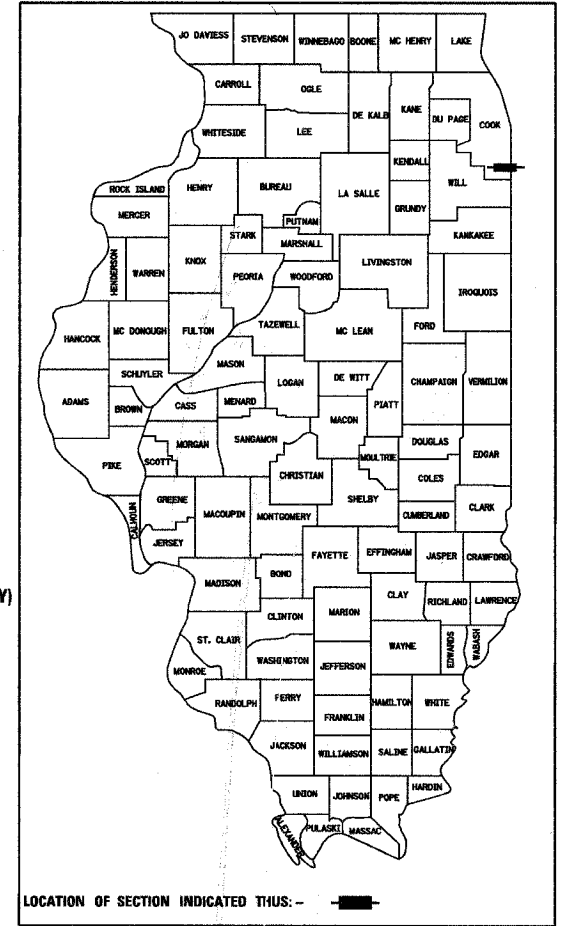
PROJECT NO.:

COOK COUNTY, IL

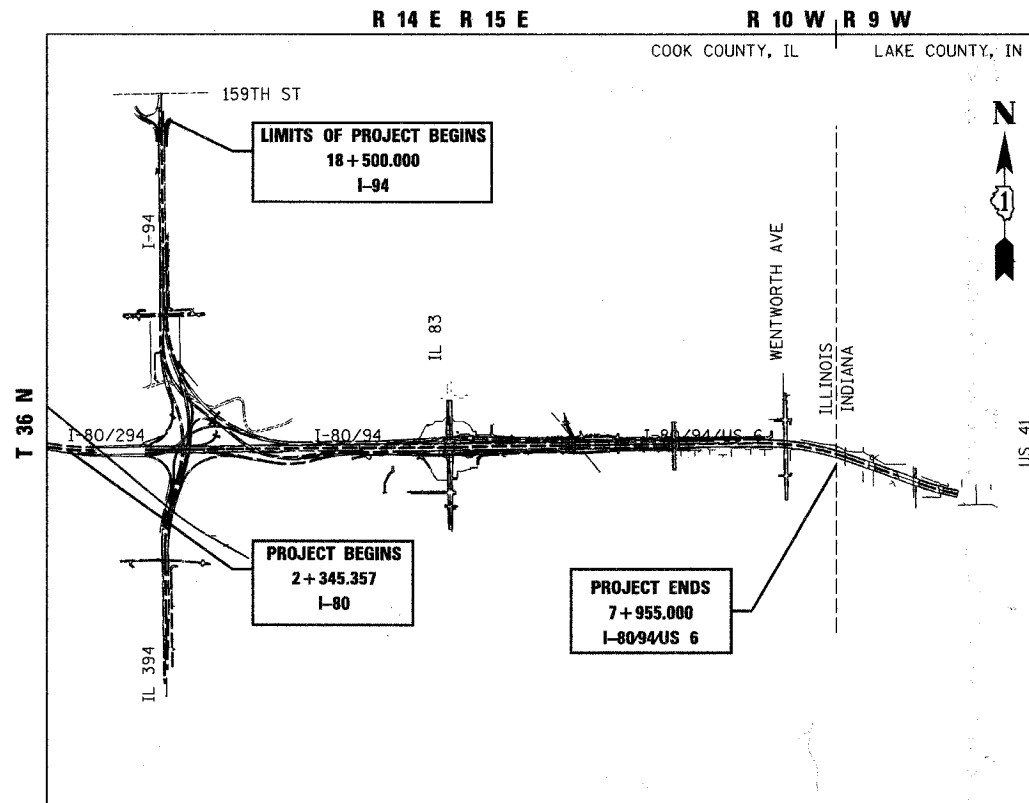
C-91-079-04

F.A.I. RTE.	SECTION	COUNTY	TOTAL SHEETS	SHEET NO.
80/94	2003-106 LS	COOK	59	1
FED. ROAD DIST. NO.		ILLINOIS	FED. AID PROJECT	

CONTRACT 62699



LOCATION OF SECTION INDICATED THUS: -

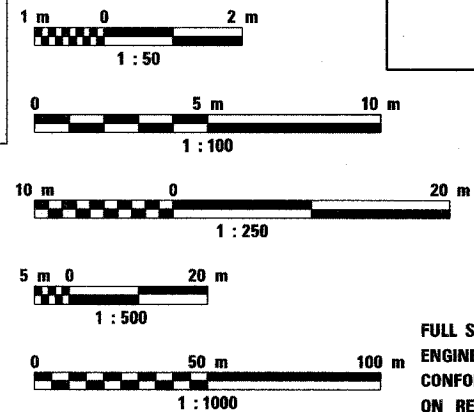


I-80/94/US 6 (KINGERY-BORMAN EXPRESSWAY)
 INSTALLATION OF LANDSCAPING ITEMS
 ALONG I-94, IL 394, I-80/94, TORRENCE
 AVE, BURNHAM AVE, WENTWORTH AVE,
 170 TH ST, 175TH ST, BERNICE AVE AND
 THORTON-LANSING RD.

**PROJECT LOCATED IN
 VILLAGE OF SOUTH HOLLAND, ILLINOIS,
 VILLAGE OF LANSING, ILLINOIS**

CALUMET CITY TOWNSHIP (IL)
 I-80/94/US 6 GROSS LENGTH OF PROJECT = 8991.524 M ; 8.992 KM
 NET LENGTH OF PROJECT = 8991.524 M ; 8.992 KM

METRIC RATIOS



STATE OF ILLINOIS
 DEPARTMENT OF TRANSPORTATION
 DIVISION OF HIGHWAYS

SUBMITTED June 21, 2007

Diane O'Keefe / *col*
 DEPUTY DIRECTOR OF HIGHWAYS, REGION ENGINEER

August 17, 2007
Eric E. Haral / *RD*
 ENGINEER OF DESIGN AND ENVIRONMENT

August 17, 2007
Milton R. Seal / *RD*
 DEPUTY DIRECTOR OF HIGHWAYS, CHIEF ENGINEER

J.U.L.I.E.
 JOINT UTILITY LOCATION INFORMATION
 FOR EXCAVATION
 1-800-892-0123

FULL SIZE PLANS HAVE BEEN PREPARED USING STANDARD
 ENGINEERING SCALES, REDUCED SIZED PLANS WILL NOT
 CONFORM TO STANDARD SCALES, IN MAKING MEASUREMENTS
 ON REDUCED PLANS, THE ABOVE SCALES MAY BE USED.

CONSULTING SERVICES : PROJECT MANAGER: CATHERINE KIBBLE, (847) 705-4269

PRINTED BY THE AUTHORITY OF
 THE STATE OF ILLINOIS
CONTRACT NO. 62699

