

F.A.I. RTE.	SECTION	COUNTY	TOTAL SHEETS	SHEET NO.
80/94	2003-106LS	COOK	59	45
STA.	TO STA.			
FED. ROAD DIST. NO.	ILLINOIS	FED. AID PROJECT		
CONTRACT NO. 62699				

ALL DIMENSIONS IN METERS EXCEPT PAY ITEMS AND UNLESS NOTED OTHERWISE

VINE/PERENNIAL BED TREATMENT TYPE A - B - C (TYP)

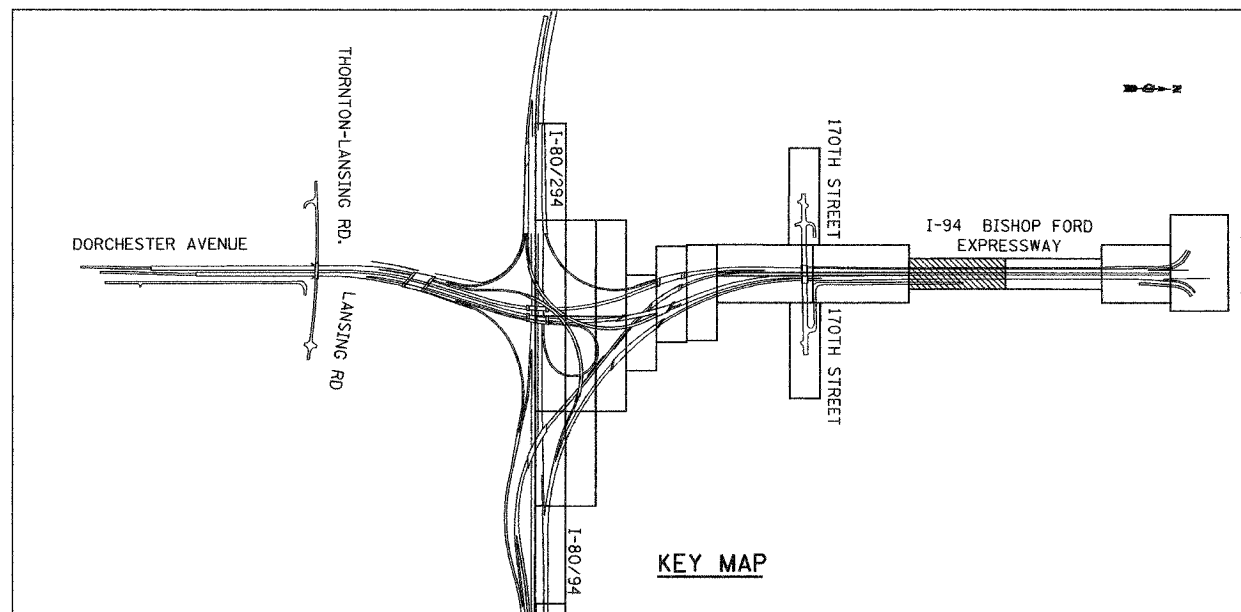
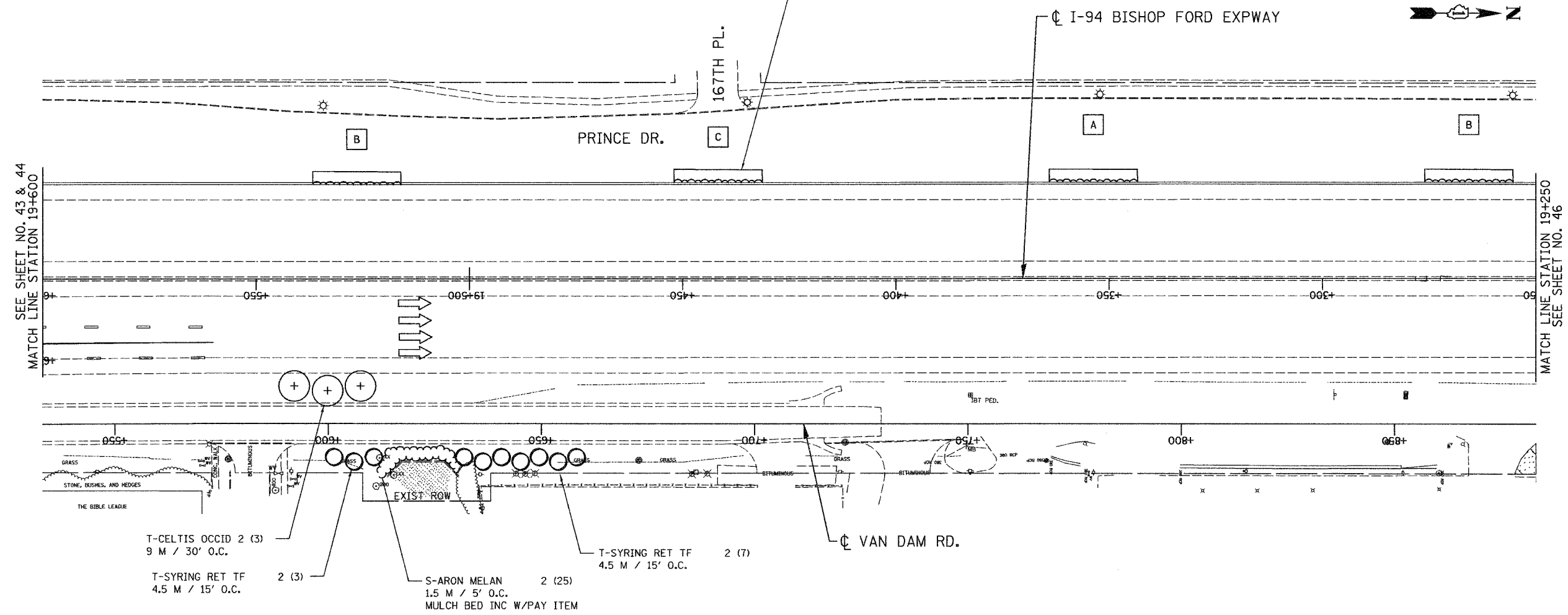
V-PARTHEN QUINO 1G (1 M / 3' O.C. ALONG WALL) - (20)

PERENNIAL PLANTS GAL POT (5 UNITS)

MULCH BED INC W/PAY ITEM

SAND PLACEMENT (20 SQ M)

(SEE DETAIL PLANS & SCHEDULES LSM-28B)



LSNS - 35

ILLINOIS DEPARTMENT OF TRANSPORTATION
I-80/94/US 6
KINGERY-BORMAN EXPRESSWAY
BURNHAM ROAD TO US 41
LANDSCAPING PLAN
I-94 BISHOP FORD EXPWAY

REVISIONS	
NAME	DATE

SCALE 1:500
DATE 06/07
DRAWN BY ACE/CAD
CHECKED BY TJW



06/28/2007 1:35:25 PM P:\Project\20140801\CADD\Contract\LSNS_35.rvt