

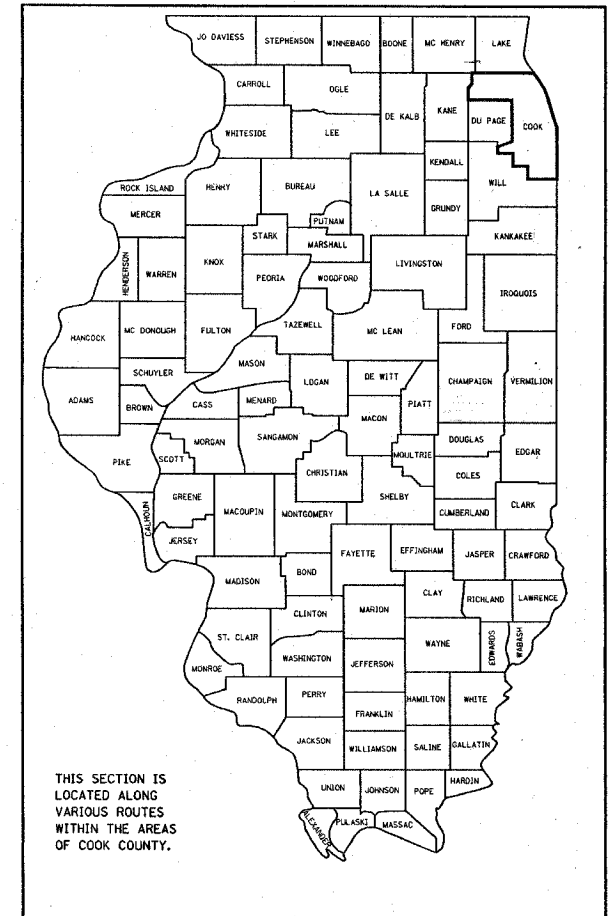
F.A. RTE. VAR.	SECTION 2004-126 I	COUNTY COOK	TOTAL SHEETS 8	SHEET NO. 1
----------------	--------------------	-------------	----------------	-------------

STATE OF ILLINOIS
DEPARTMENT OF TRANSPORTATION
DIVISION OF HIGHWAYS

**PROPOSED
HIGHWAY PLANS**

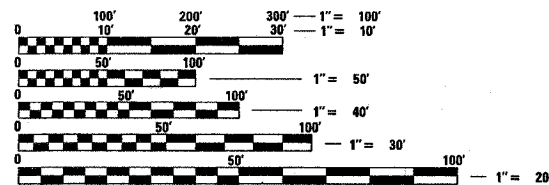
ROUTE: VARIOUS COOK COUNTY
SECTION: 2004-126I
COUNTY: COOK
ARTERIAL HIGHWAY CLEANING (SWEEPING)
C-91-088-05

D-91-088-05



FOR INDEX OF SHEETS, SEE SHEET NO. 2

LOCATION MAPS - SEE INDEX OF SHEETS



FULL SIZE PLANS HAVE BEEN PREPARED USING STANDARD ENGINEERING SCALES. REDUCED SIZED PLANS WILL NOT CONFORM TO STANDARD SCALES. IN MAKING MEASUREMENTS ON REDUCED PLANS, THE ABOVE SCALES MAY BE USED.

J.U.L.I.E.
JOINT UTILITY LOCATION INFORMATION FOR EXCAVATION
1-800-892-0123

CONTRACT NO. 62893

STATE OF ILLINOIS
DEPARTMENT OF TRANSPORTATION
DIVISION OF HIGHWAYS

SUBMITTED Dec. 17 2007

Diane O'Keefe
DEPUTY DIRECTOR OF HIGHWAYS, REGION ENGINEER

December 7, 2007
Eric E. Harm
ENGINEER OF DESIGN AND ENVIRONMENT

December 7, 2007
Christine M. Reed
DIRECTOR OF HIGHWAYS, CHIEF ENGINEER

**PRINTED BY THE AUTHORITY
OF THE STATE OF ILLINOIS**

CONTRACT NO. 62893				
F.A. RTE.	SECTION	COUNTY	TOTAL SHEETS	SHEET NO.
VAR.	2004-126 I	COOK	8	2
STA.		TO STA.		
FED. ROAD DIST. NO.	ILLINOIS	FED. AID PROJECT		

INDEX OF SHEETS

1. TITLE SHEET
2. INDEX OF SHEETS
APPLICABLE STATE STANDARDS
3. SUMMARY OF QUANTITIES
SCHEDULE OF CLEANING STARTING DATES
4. ARTERIAL TYPICAL SECTIONS
- 5.- 6. LOCATION SHEETS
7. DISTRICT ONE DETAILS: TRAFFIC CONTROL DEVICES FOR
HIGHWAY AND SIGN CLEANING OPERATIONS-DAY TIME ONLY
8. TRAFFIC CONTROL DETAILS FOR SHOULDER CLOSURES
AND PARTIAL RAMP CLOSURES

- 701001-01
- 701006-02
- 701011-01
- 701101-01
- 701301-02
- 701311-02
- 701411-04
- 701901

STATE STANDARDS

- OFF-ROAD OPERATION 2L, 2W, 15' MIN. AWAY FOR SPEEDS >45 MPH
- OFF-ROAD OPERATION 2L, 2W, 15' TO PAVEMENT EDGE FOR SPEEDS >45 MPH
- OFF-ROAD MOVING OPERATION 2L, 2W, DAY ONLY
- OFF-ROAD OPERATIONS, MULTILANE, 15' TO 24" FROM PAVEMENT EDGE
- LANE CLOSURE, 2L 2W, SHORT TIME OPERATIONS
- LANE CLOSURE, 2L 2W, MOVING OPERATIONS - DAY ONLY
- LANE CLOSURE, MULTILANE AT ENTERANCE/EXIT RAMP FOR SPEEDS >45 MPH
- TRAFFIC CONTROL DEVICES

PLOT DATE = 12/15/2007
 FILE NAME = c:\projects\127986\workspace\127986.dgn
 USER NAME = mrsjpc

REVISIONS	
NAME	DATE

ILLINOIS DEPARTMENT OF TRANSPORTATION

INDEX OF SHEETS AND STATE STANDARDS

SCALE: VERT.
HORIZ.
DATE

DRAWN BY
CHECKED BY

F.A. RTE.	SECTION	COUNTY	TOTAL SHEETS	SHEET NO.
VAR.	2004-126 I	COOK	8	3
STA.	TO STA.			
FED. ROAD DIST. NO.	ILLINOIS FED. AID PROJECT			

SUMMARY OF QUANTITIES

CODE NO.	ITEM	UNIT	URBAN
			100% STATE
			MAIN QUANTITY
X0323141	SUPPLEMENTAL SWEEPING	MILE	100
X0330600	FULL ARTERIAL CLEANING CYCLE	EACH	3

ARTERIAL CLEANING SCHEDULE OF STARTING DATES - 2008

1st FULL CLEANING CYCLE	----	MARCH 1
2nd FULL CLEANING CYCLE	----	JULY 1
3rd FULL CLEANING CYCLE	----	SEPTEMBER 1 (RECOMMENDED TO BE COMPLETED ON OR BEFORE NOVEMBER 30)

ARTERIAL CLEANING SCHEDULE OF STARTING DATES - 2009

1st FULL CLEANING CYCLE	----	MARCH 1
2nd FULL CLEANING CYCLE	----	JULY 1
3rd FULL CLEANING CYCLE	----	SEPTEMBER 1 (RECOMMENDED TO BE COMPLETED ON OR BEFORE NOVEMBER 30)

NOTES:

- SCHEDULE MAY VARY AS DIRECTED BY THE ENGINEER.
- THE CONTRACTOR MAY NOT START CLEANING CYCLES BEFORE THE DATES SCHEDULED IN THE PLANS WITHOUT WRITTEN AUTHORIZATION FROM THE ENGINEER.
- NO WORK WILL BE ALLOWED DURING ANY LEGAL HOLIDAY PERIOD.
- ALL SCHEDULES OF ANTICIPATED STARTING DATES SHOWN ARE TENTATIVE AS DETERMINE BY THE DEPARTMENT'S OPERATIONAL NEEDS.

PLOT DATE = 12/15/2007
 FILE NAME = c:\p\proj\c\m\27988\sweping\contract\ao\2008.dgn
 PLOT SCALE = 56.8000 / 1 IN.
 USER NAME = msljja

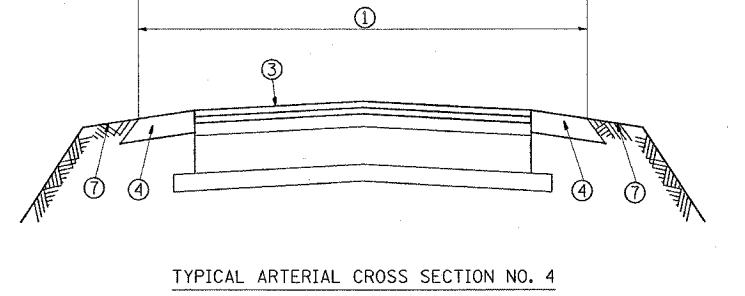
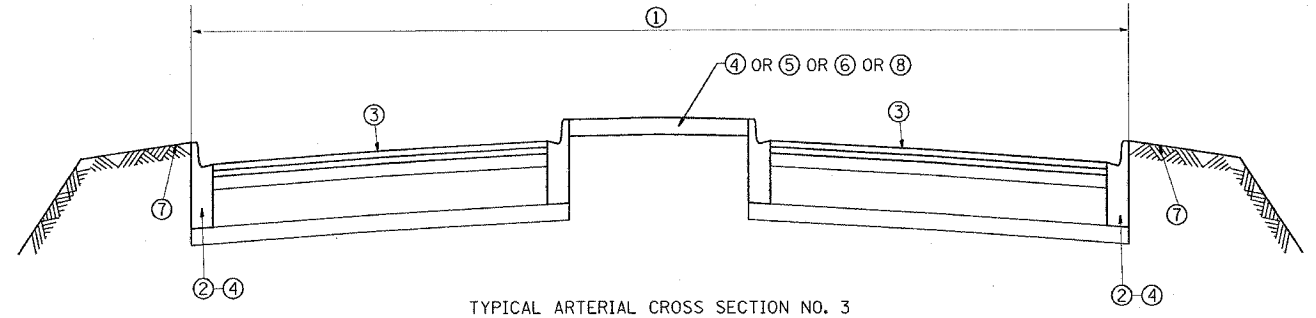
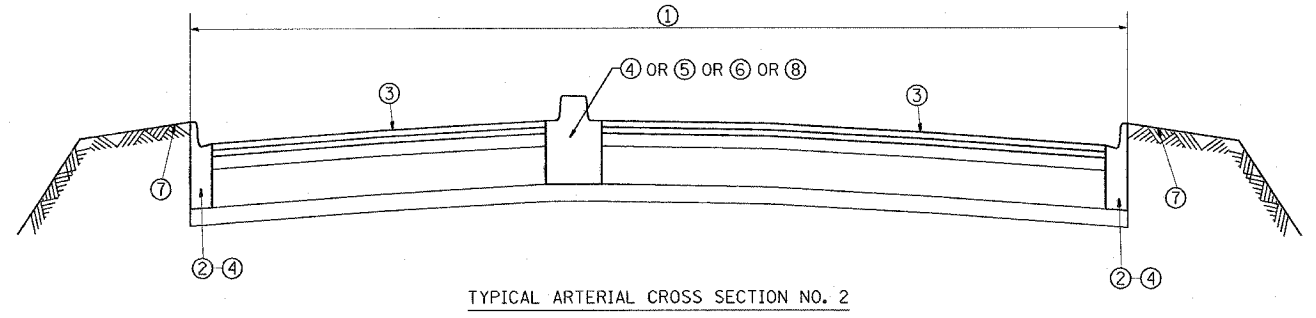
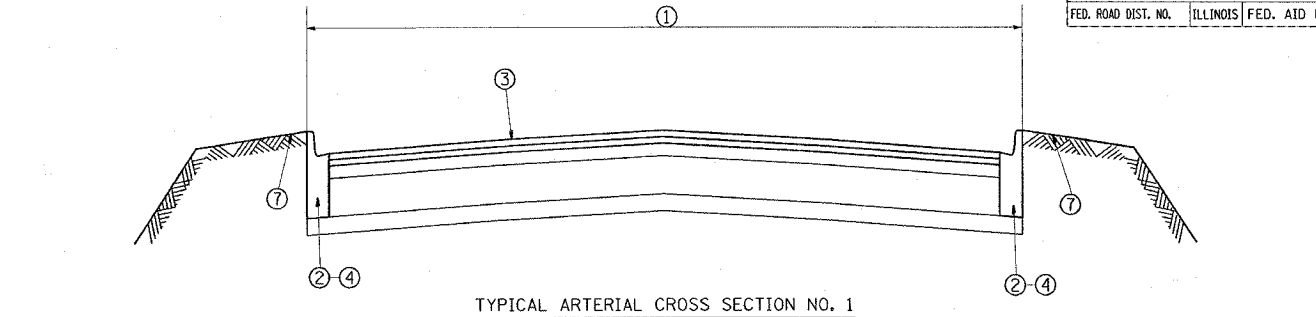
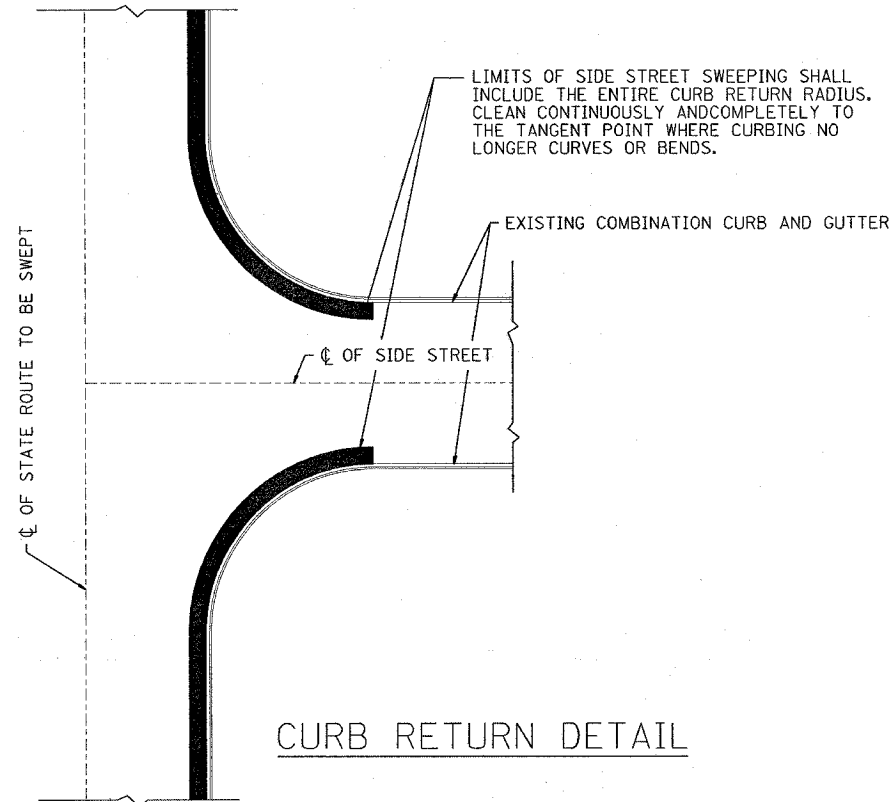
REVISIONS	
NAME	DATE

ILLINOIS DEPARTMENT OF TRANSPORTATION
 SUMMARY OF QUANTITIES
 AND
 SCHEDULE OF STARTING DATES

SCALE: VERT.
 DATE: HORIZ.

DRAWN BY
 CHECKED BY

F.A. RTE.	SECTION	COUNTY	TOTAL SHEETS	SHEET NO.
VAR. 2004-126 I		COOK	8	4
STA.		TO STA.		
FED. ROAD DIST. NO.	ILLINOIS	FED. AID PROJECT		



- LEGEND**
- ① AREA OF ROADWAY CLEANING AND RUBBISH REMOVAL
 - ② CURB AND GUTTER
 - ③ TRAVELED ROADWAY
 - ④ STABILIZED SHOULDER OR MEDIAN
 - ⑤ STEEL PLATE GUARD
 - ⑥ CONCRETE BARRIER
 - ⑦ NON STABILIZED AREA
 - ⑧ RAISED CONCRETE MEDIAN

NOTE:
SLOPE WALLS UNDER BRIDGES ARE NOT INCLUDED IN AREAS TO BE CLEANED.

REVISIONS	
NAME	DATE

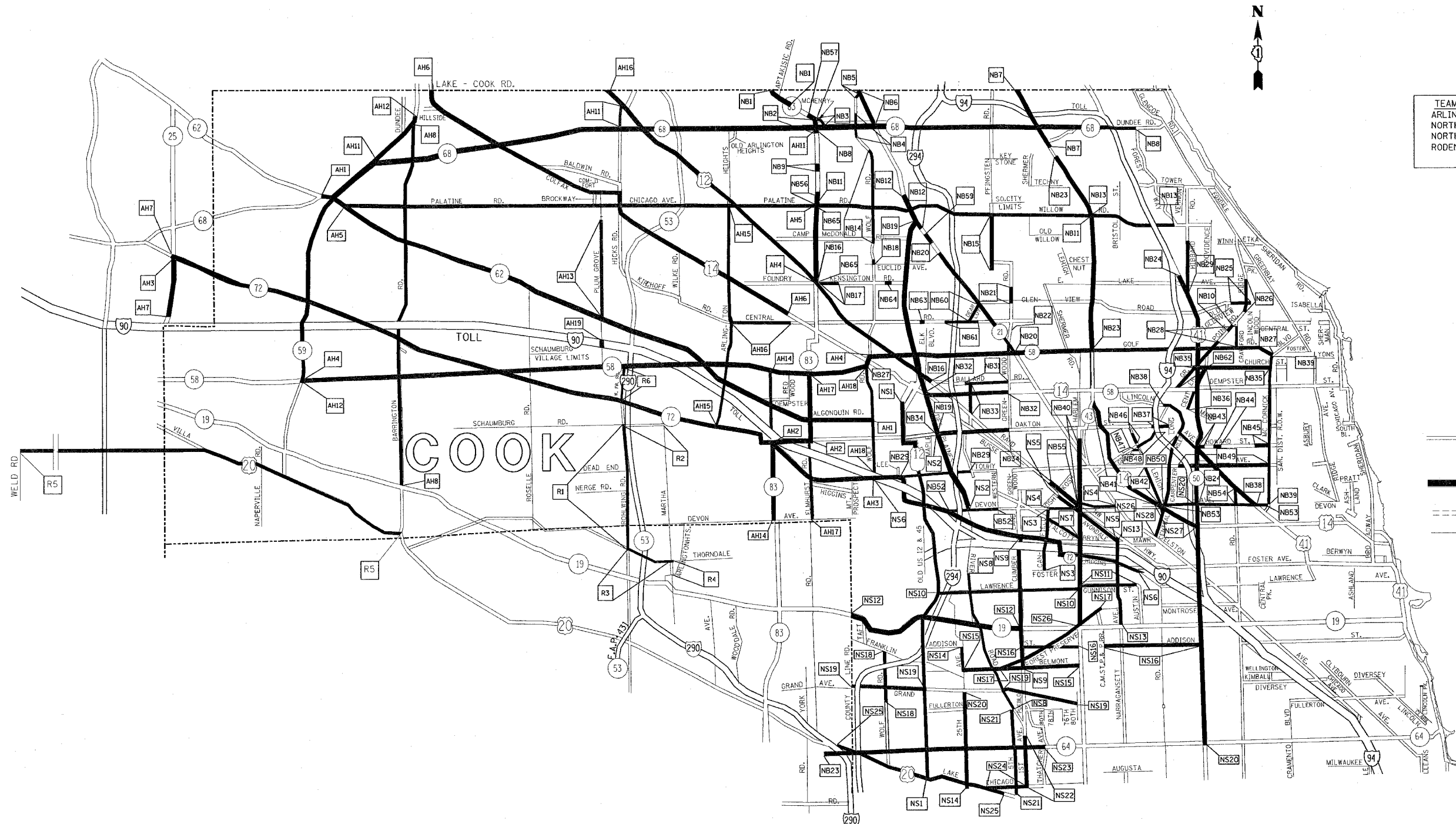
ILLINOIS DEPARTMENT OF TRANSPORTATION
ARTERIAL HIGHWAY
CLEANING (SWEEPING)
**TYPICAL
ARTERIAL CROSS SECTIONS
AND CURB RETURN DETAIL**

SCALE: VERT. _____
HORIZ. _____

DATE _____ DRAWN BY _____
CHECKED BY _____

PLOT DATE = 12/15/2007
PLOT SCALE = 1/8" = 1'-0"
PLOT USER = msljg

F.A. RTE.	SECTION	COUNTY	TOTAL SHEETS	SHEET NO.
VAR.	2004-126 I	COOK	8	5
STA.		TO STA.		
FED. ROAD DIST. NO.	ILLINOIS	FED. AID PROJECT		



TEAM SECTION	KEY LOCATIONS
ARLINGTON HTS.	AH1-AH19
NORTHBROOK	NB1-NB65
NORTHSIDE	NS1-NS29
RODENBURG	R1-R6

- DISTRICT NO. 1
- STATE HIGHWAYS & EXPRESSWAYS WITHIN STATE JURISDICTION (EXCEPT TOLLWAYS)
 - STATE HIGHWAYS & EXPRESSWAYS TO BE CLEANED
 - FUTURE HIGHWAYS
 - VARIOUS AGENCIES HIGHWAYS

REVISIONS	
NAME	DATE

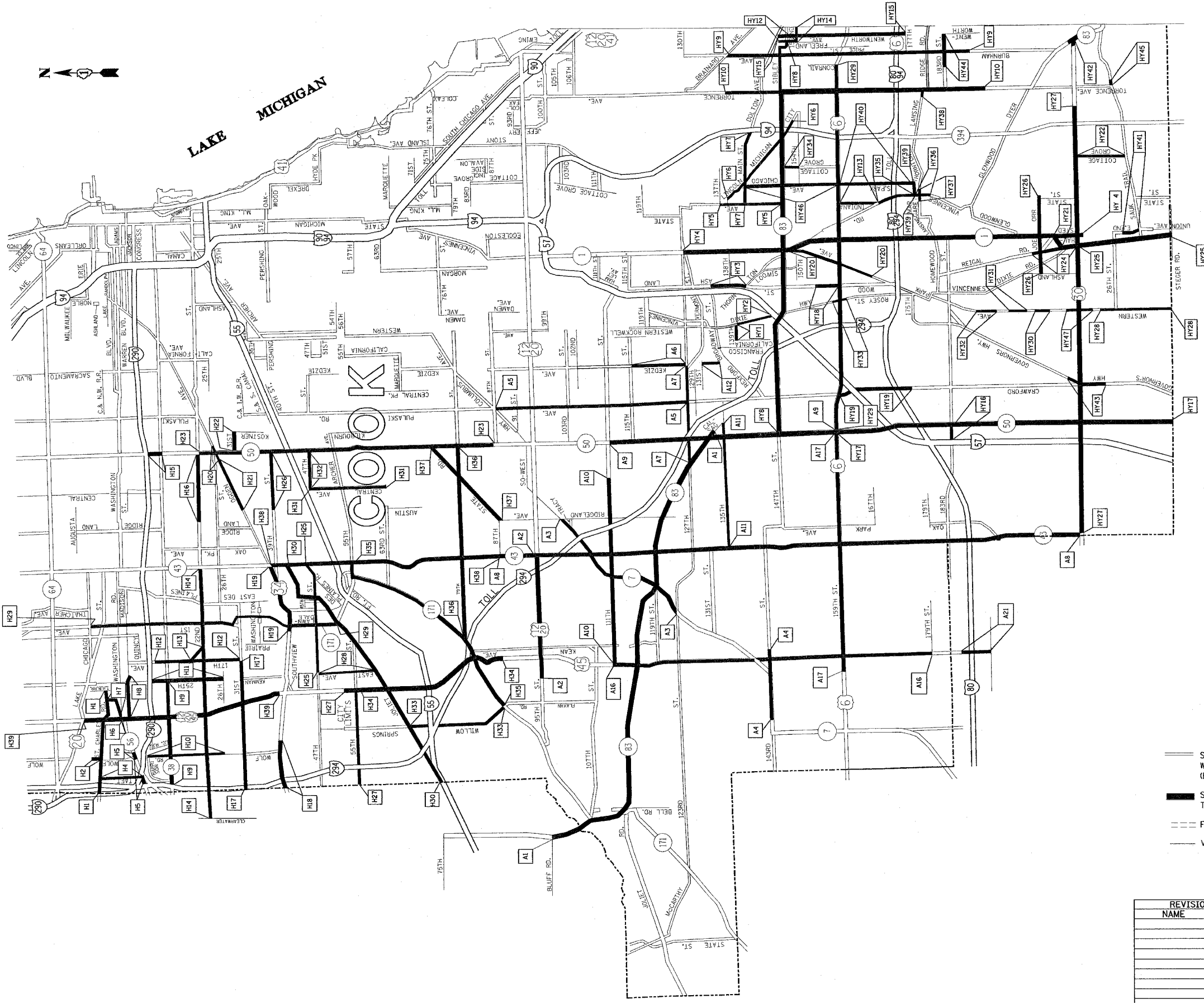
ILLINOIS DEPARTMENT OF TRANSPORTATION
 ARTERIAL CLEANING
 LOCATION MAP
 COOK COUNTY NORTH OF & INCLUDING
 ILL. RTE. 64 (NORTH AVE.)
 ARLINGTON, NORTHBROOK, NORTHSIDE
 AND RODENBURG ARTERIAL
 TEAM SECTIONS

SCALE: VERT. _____
 HORIZ. _____
 DATE _____

DRAWN BY _____
 CHECKED BY _____

PLOT DATE = 12/15/2007
 PLOT SCALE = 1" = 1000'
 USER NAME = mdujda

F.A. RTE.	SECTION	COUNTY	TOTAL SHEETS	SHEET NO.
VAR.	2004-126 I	COOK	8	6
STA.	TO STA.			
FED. ROAD DIST. NO.	ILLINOIS	FED. AID PROJECT		



LAKE MICHIGAN

TEAM SECTION	KEY LOCATIONS
HILLSIDE	H1-H39
ALSIP	A1-A21
HARVEY	HY1-HY47

- DISTRICT NO. 1
- STATE HIGHWAYS & EXPRESSWAYS WITHIN STATE JURISDICTION (EXCEPT TOLLWAYS)
 - STATE HIGHWAYS & EXPRESSWAYS TO BE CLEANED
 - FUTURE HIGHWAYS
 - VARIOUS AGENCIES HIGHWAYS

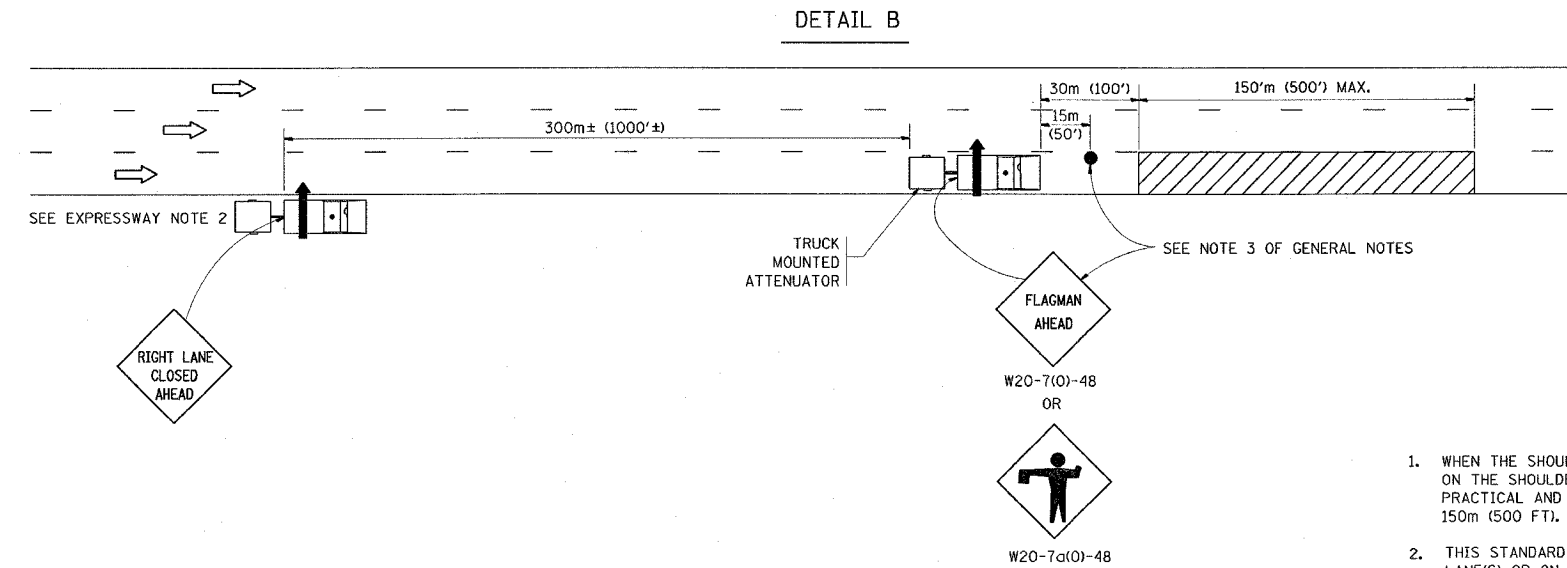
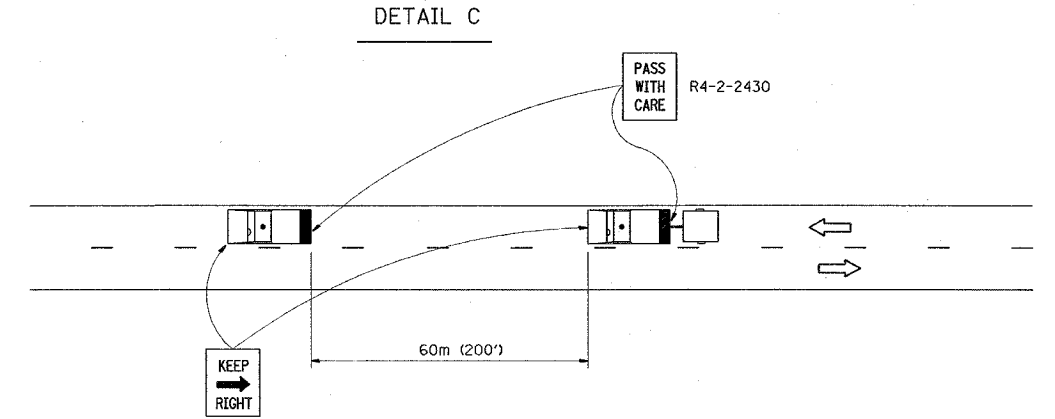
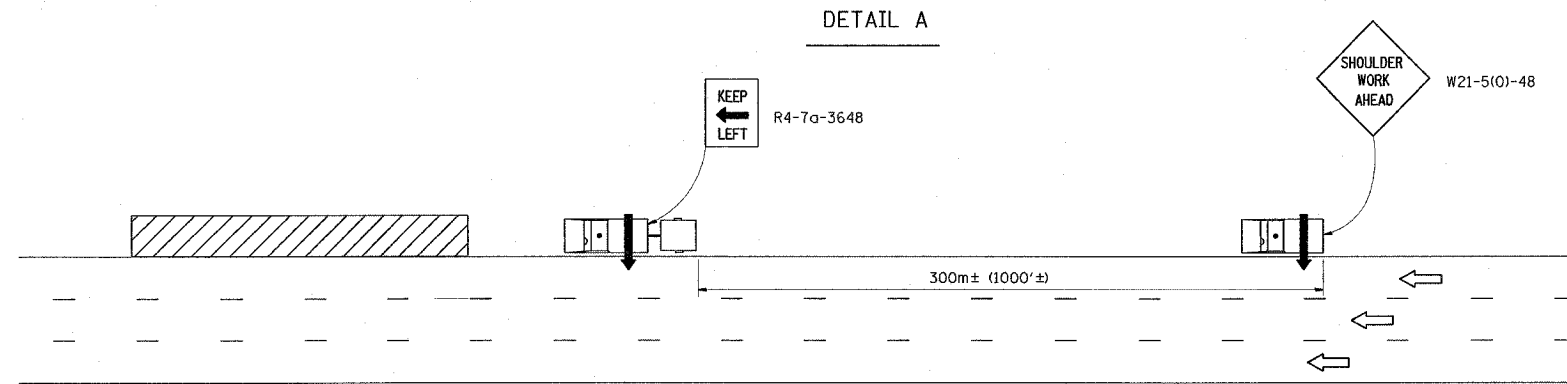
REVISIONS	
NAME	DATE

ILLINOIS DEPARTMENT OF TRANSPORTATION
 ARTERIAL CLEANING
 LOCATION MAP
 COOK COUNTY SOUTH OF
 ILL. RTE. 64 (NORTH AVE.)
 HILLSIDE, ALSIP AND HARVEY TEAM SECTIONS

SCALE: VERT. _____
 HORIZ. _____
 DATE _____ DRAWN BY _____
 CHECKED BY _____

PLOT DATE = 12/15/2007
 FILE NAME = c:\p\proj\mets\m27989\wep\proj\cont\cc-2886.dgn
 USER NAME = mshjjs

F.A. RTE.	SECTION	COUNTY	TOTAL SHEETS	SHEET NO.
VAR.	2004-126 I	COOK	8	7
STA.	TO STA.			
FED. ROAD DIST. NO.	ILLINOIS	FED. AID PROJECT		



GENERAL NOTES

1. WHEN THE SHOULDER DOES NOT EXIST, OR IS NARROW, FOLLOWING VEHICLES SHOWN ON THE SHOULDER SHALL RIDE AS CLOSE TO THE EDGE OF THE TRAVELLED WAY AS PRACTICAL AND THE SPACING TO THE NEXT VEHICLE REDUCED TO APPROXIMATELY 150m (500 FT).
2. THIS STANDARD IS ALSO APPLICABLE WHEN WORK IS BEING PERFORMED IN THE LEFT LANE(S) OR ON THE MEDIAN SHOULDER. UNDER THESE CONDITIONS, "KEEP RIGHT" SIGNS SHALL BE SUBSTITUTED FOR "KEEP LEFT" SIGNS AND ARROW BOARD INDICATIONS SHALL BE DIRECTED TO THE RIGHT.
3. WHEN FLAGGERS ARE SPECIFIED, FLAGGER SIGNS SHALL BE PLACED AS SHOWN.
4. WHEN USING DETAIL B, OR WHERE WORKERS ARE IN THE LEAD VEHICLE, OTHER THAN IN THE CAB, THE FOLLOWING VEHICLE SHALL BE POSITIONED BEHIND THE LEAD VEHICLE AND THE SPACING REDUCED TO APPROXIMATELY 150m (500 FT).
5. LONGITUDINAL DISTANCES MAY BE ADJUSTED TO FIT FIELD CONDITIONS. THE LATERAL PLACEMENT OF THE FLAGGER MAY BE VARIED FROM THAT SHOWN.
6. WATER TRUCKS USED TO CONTROL DUST PROPAGATION ARE ALLOWED TO OPERATE BY THEMSELVES. THEY SHALL AVOID SUDDEN STOPS.
7. ALL VEHICLES SHALL HAVE HEADLIGHTS AND EMERGENCY FLASHERS OPERATING AND SHALL DISPLAY AN AMBER COLORED OSCILLATING, ROTATING OR FLASHING LIGHT(S). AT LEAST ONE AMBER LIGHT IS TO BE VISIBLE FROM ANY DIRECTION.
8. ALL SWEEPERS, SIGN CLEANING TRUCKS, WATER TRUCKS AND FOLLOW VEHICLES SHALL HAVE ARROW BOARDS, AND APPROPRIATE SIGNS.

SYMBOLS

- ARROW BOARD (HAZARD MODE ONLY)
- ARROW BOARD
- FLAGGER WITH TRAFFIC CONTROL SIGNS
- WORK AREA
- TRUCK WITH FLASHING AMBER LIGHT
- TRUCK WITH FLASHING AMBER LIGHT AND TRUCK MOUNTED ATTENUATOR

EXPRESSWAY NOTES

1. A FOLLOW VEHICLE(S) WITH ARROW BOARD IS REQUIRED AT ALL TIMES.
2. TRUCK MOUNTED ATTENUATORS ARE REQUIRED ON ALL CLEANING OPERATIONS.
3. WHEN WITHIN THE INNER CITY LIMITS OR ON SHOULDERS THAT ARE TOO NARROW FOR THE FOLLOW VEHICLE, THE SECOND FOLLOW VEHICLE SHALL HAVE A TRUCK MOUNTED ATTENUATOR.
4. WHEN WORKING ON RAMP, THE SECOND FOLLOW VEHICLE SHALL REMAIN ON THE MAINLINE SHOULDER IN ADVANCE OF THE RAMP. THE FOLLOW VEHICLE SHALL HAVE A "RAMP WORK AHEAD" SIGN.
5. SIGN CLEANING SHALL HAVE THE SAME TRAFFIC CONTROL AND PROTECTION REQUIREMENTS AS OUTLINED FOR SWEEPING OPERATIONS.

ARTERIAL NOTES

1. DETAIL C SHALL APPLY
2. TRUCK MOUNTED ATTENUATORS ARE REQUIRED ON ALL CLEANING OPERATIONS.

PLOT DATE = 12/17/2007
 PLOT SCALE = 50.0000 / IN.
 USER NAME = mdsjja

REVISIONS		ILLINOIS DEPARTMENT OF TRANSPORTATION
NAME	DATE	
		DISTRICT ONE DETAILS: TYPICAL APPLICATION OF TRAFFIC CONTROL DEVICES HIGHWAY OPERATIONS-DAY TIME ONLY

SCALE: VERT. DATE: HORIZ. DRAWN BY: CHECKED BY:

