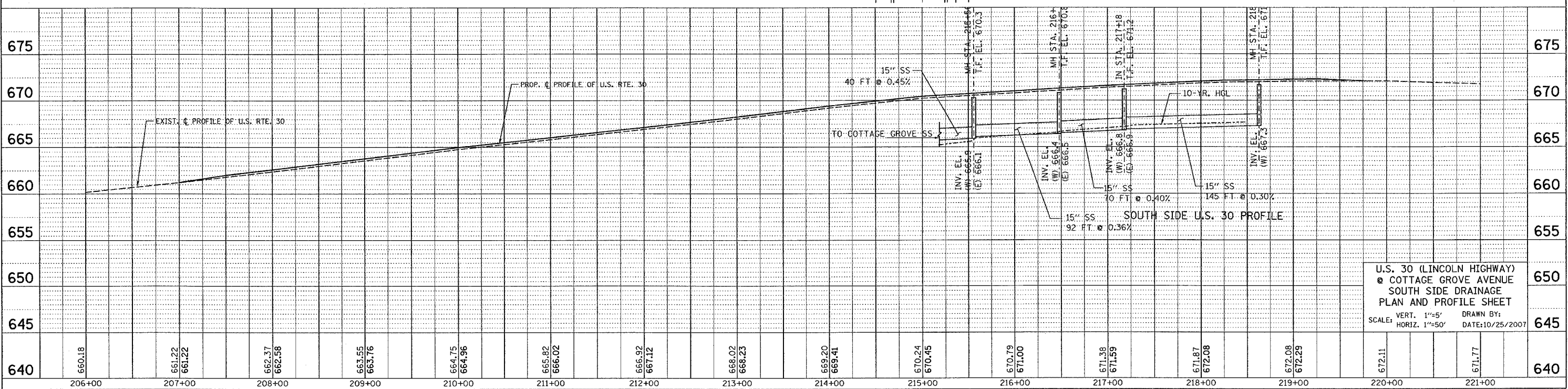
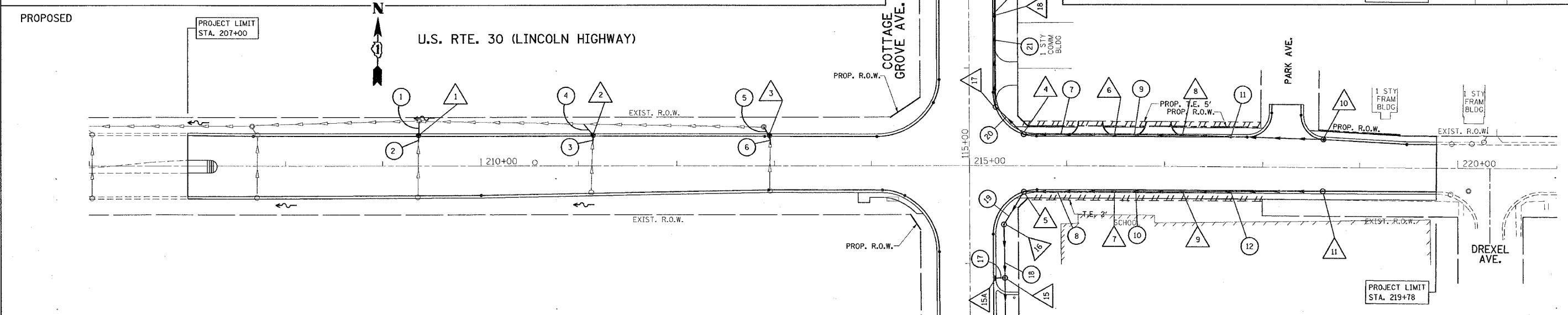
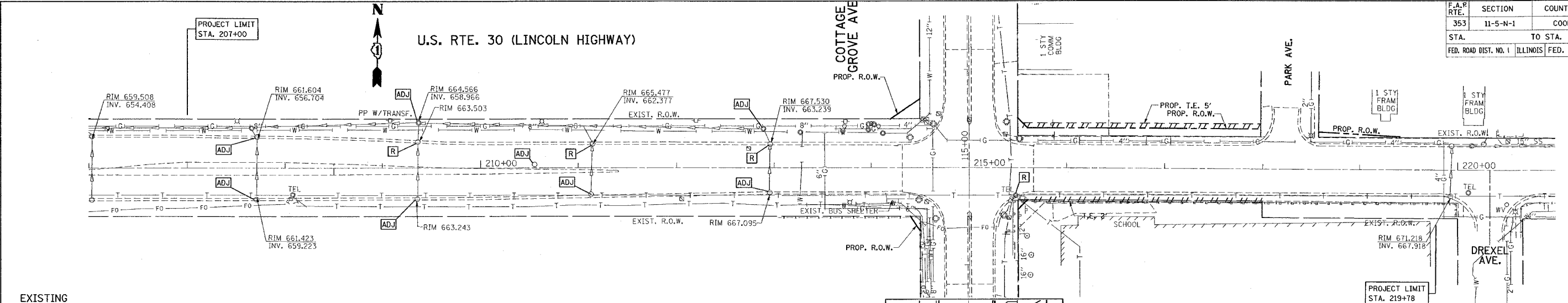


F.A.R. RTE.	SECTION	COUNTY	TOTAL SHEETS	SHEET NO.
353	11-5-N-1	COOK	79	18
STA. TO STA.		FED. ROAD DIST. NO. 1 ILLINOIS FED. AID PROJECT		



U.S. 30 (LINCOLN HIGHWAY)
 @ COTTAGE GROVE AVENUE
 SOUTH SIDE DRAINAGE
 PLAN AND PROFILE SHEET
 SCALE: VERT. 1"=5' DRAWN BY:
 HORIZ. 1"=50' DATE: 10/25/2007

DATE	BY	DESCRIPTION
		PLAN
		PROF. II
		NOTE BOOK
		ALTOUGH CHECKED
		ADJUSTMENT CHECKED
		FIELD FILE NAME

DATE	BY	DESCRIPTION
		PROF. II
		NOTE BOOK
		GRADES CHECKED
		BM. NOTED
		PRODUCTION NOTATIONS OK'D
		NO.

PLOT DATE = 10/25/2007
 FILE NAME = c:\projects\62949\11-5-n-1\18.dwg
 PLOT SCALE = 50/2000 / IN.
 USER NAME = baward