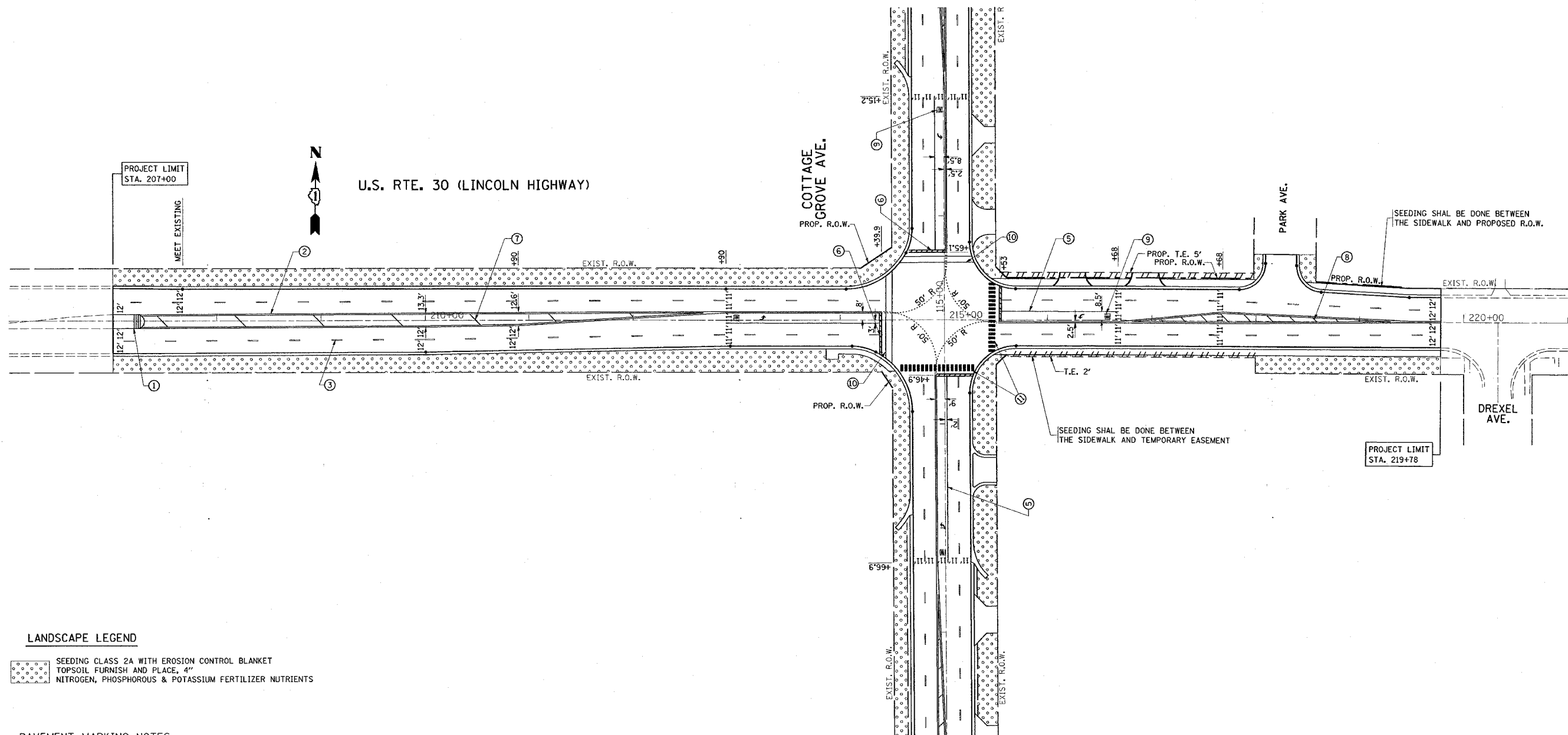


| F.A. #                | SECTION  | COUNTY                    | TOTAL SHEETS | SHEET NO. |
|-----------------------|----------|---------------------------|--------------|-----------|
| 353                   | 11-5-N-1 | COOK                      | 79           | 35        |
| STA.                  |          | TO STA.                   |              |           |
| FED. ROAD DIST. NO. 1 |          | ILLINOIS FED. AID PROJECT |              |           |



**LANDSCAPE LEGEND**

- SEEDING CLASS 2A WITH EROSION CONTROL BLANKET  
TOPSOIL FURNISH AND PLACE, 4"  
NITROGEN, PHOSPHOROUS & POTASSIUM FERTILIZER NUTRIENTS

**PAVEMENT MARKING NOTES:**

- ① PROPOSED 4" SOLID YELLOW LINE (AROUND MEDIAN)(TYP.)
- ② PROPOSED 4" DOUBLE YELLOW, 2 LINES @ 11" C-C (TYP.)
- ③ PROPOSED 4" WHITE SKIP-DASH, (10' DASH, 30' SKIP)(TYP.)
- ④ PROPOSED 4" WHITE EDGE LINE
- ⑤ PROPOSED 6" WHITE TURN LINE (TYP.)
- ⑥ PROPOSED 24" WHITE STOP BAR (TYP.)
- ⑦ PROPOSED 12" YELLOW DIAGONALS, (45° @ 75' C-C)
- ⑧ PROPOSED 12" YELLOW DIAGONALS, (45° @ 20' C-C)
- ⑨ PROPOSED WHITE PAVEMENT MARKINGS LETTERS AND SYMBOLS (TYP.)
- ⑩ PROPOSED 6" WHITE CROSSWALK, (2 LINES @ 6' C-C)
- ⑪ PROPOSED 12" WHITE CROSSWALK, (6' LINE @ 3' C-C)

NOTE: RAISED REFLECTIVE PAVEMENT MARKERS  
TO BE INSTALLED ON U.S. 30 AND  
COTTAGE GROVE AVE.

| REVISIONS |      |
|-----------|------|
| NAME      | DATE |
|           |      |
|           |      |
|           |      |
|           |      |
|           |      |
|           |      |
|           |      |
|           |      |
|           |      |

ILLINOIS DEPARTMENT OF TRANSPORTATION  
U.S. RTE. 30 (LINCOLN HIGHWAY)  
@ COTTAGE GROVE AVENUE  
PAVEMENT MARKING &  
LANDSCAPING PLAN

SCALE: 1" = 50'  
DATE: 12/13/2007

DRAWN BY  
CHECKED BY

REV. 1