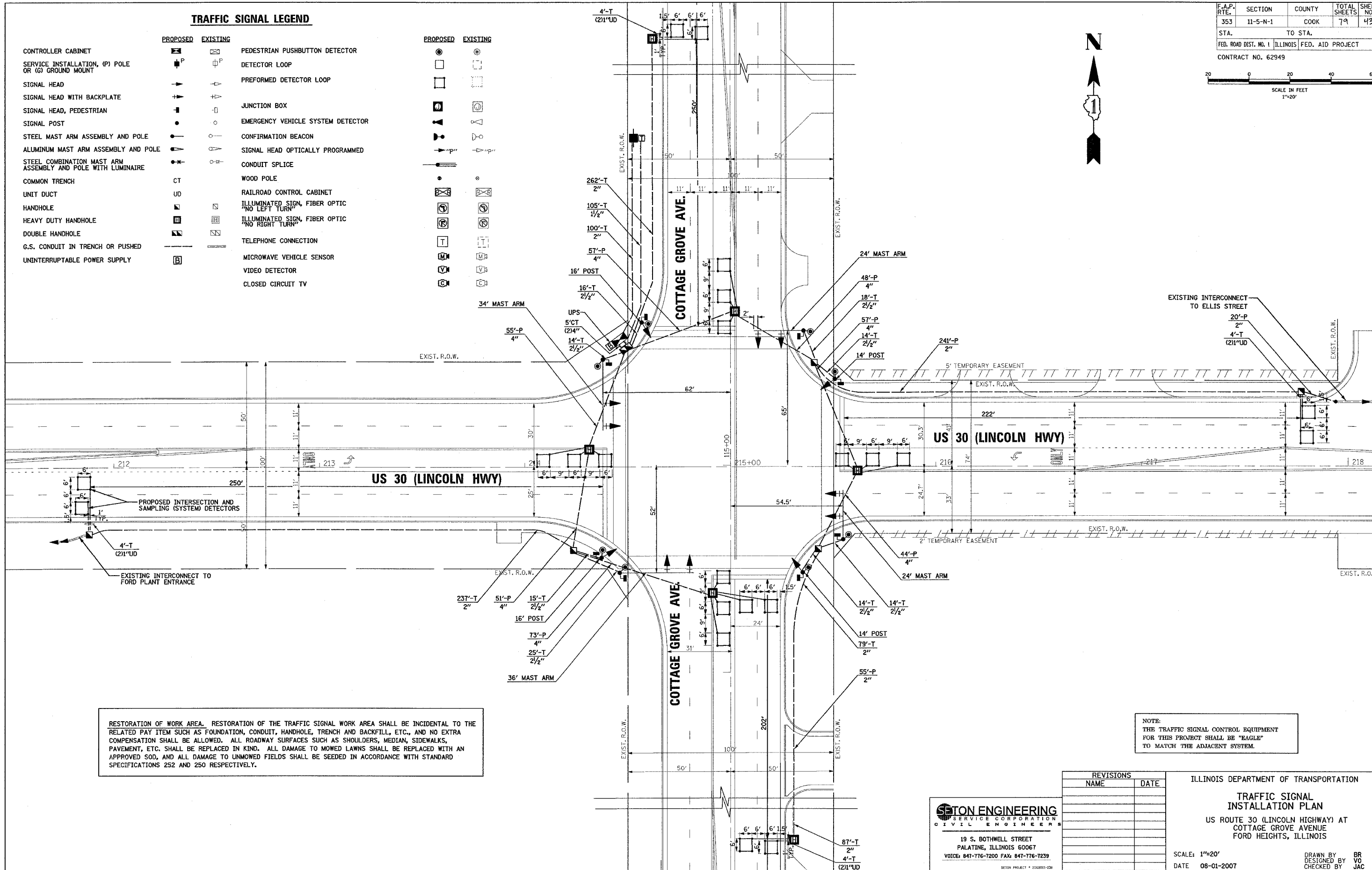
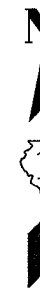
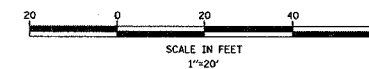


**TRAFFIC SIGNAL LEGEND**

- |   |  |  |   |  |  |
|---|--|--|---|--|--|
| CONTROLLER CABINET  |  |  | PEDESTRIAN PUSHBUTTON DETECTOR                |  |  |
| SERVICE INSTALLATION, (P) POLE OR (G) GROUND MOUNT          |  |  | DETECTOR LOOP                                 |  |  |
| SIGNAL HEAD   |  |  | PREFORMED DETECTOR LOOP                       |  |  |
| SIGNAL HEAD WITH BACKPLATE                                  |  |  | JUNCTION BOX                                  |  |  |
| SIGNAL HEAD, PEDESTRIAN                                     |  |  | EMERGENCY VEHICLE SYSTEM DETECTOR             |  |  |
| SIGNAL POST   |  |  | CONFIRMATION BEACON                           |  |  |
| STEEL MAST ARM ASSEMBLY AND POLE                            |  |  | SIGNAL HEAD OPTICALLY PROGRAMMED              |  |  |
| ALUMINUM MAST ARM ASSEMBLY AND POLE                         |  |  | CONDUIT SPLICE                                |  |  |
| STEEL COMBINATION MAST ARM ASSEMBLY AND POLE WITH LUMINAIRE |  |  | WOOD POLE                                     |  |  |
| COMMON TRENCH   |  |  | RAILROAD CONTROL CABINET                      |  |  |
| UNIT DUCT   |  |  | ILLUMINATED SIGN, FIBER OPTIC "NO LEFT TURN"  |  |  |
| HANDHOLE  |  |  | ILLUMINATED SIGN, FIBER OPTIC "NO RIGHT TURN" |  |  |
| HEAVY DUTY HANDHOLE   |  |  | TELEPHONE CONNECTION                          |  |  |
| DOUBLE HANDHOLE   |  |  | MICROWAVE VEHICLE SENSOR                      |  |  |
| G.S. CONDUIT IN TRENCH OR PUSHED                            |  |  | VIDEO DETECTOR                                |  |  |
| UNINTERRUPTIBLE POWER SUPPLY                                |  |  | CLOSED CIRCUIT TV                             |  |  |

- |          |          |
|----------|----------|
| PROPOSED | EXISTING |
|          |          |

F.A.P. RTE.	SECTION	COUNTY	TOTAL SHEETS	SHEET NO.
353	11-5-N-1	COOK	79	43
STA.	TO STA.			
FED. ROAD DIST. NO. 1	ILLINOIS	FED. AID PROJECT		
CONTRACT NO. 62949				



RESTORATION OF WORK AREA. RESTORATION OF THE TRAFFIC SIGNAL WORK AREA SHALL BE INCIDENTAL TO THE RELATED PAY ITEM SUCH AS FOUNDATION, CONDUIT, HANDHOLE, TRENCH AND BACKFILL, ETC., AND NO EXTRA COMPENSATION SHALL BE ALLOWED. ALL ROADWAY SURFACES SUCH AS SHOULDERS, MEDIAN, SIDEWALKS, PAVEMENT, ETC. SHALL BE REPLACED IN KIND. ALL DAMAGE TO MOWED LAWNS SHALL BE REPLACED WITH AN APPROVED SOD, AND ALL DAMAGE TO UNMOWED FIELDS SHALL BE SEEDING IN ACCORDANCE WITH STANDARD SPECIFICATIONS 252 AND 250 RESPECTIVELY.

NOTE:  
THE TRAFFIC SIGNAL CONTROL EQUIPMENT FOR THIS PROJECT SHALL BE "EAGLE" TO MATCH THE ADJACENT SYSTEM.

REVISIONS	
NAME	DATE

**SETON ENGINEERING**  
SERVICE CORPORATION  
CIVIL ENGINEERS

19 S. BOWWELL STREET  
PALATINE, ILLINOIS 60067  
VOICE: 847-776-7200 FAX: 847-776-7239  
SETON PROJECT # 2006001-030

ILLINOIS DEPARTMENT OF TRANSPORTATION

**TRAFFIC SIGNAL  
INSTALLATION PLAN**

US ROUTE 30 (LINCOLN HIGHWAY) AT  
COTTAGE GROVE AVENUE  
FORD HEIGHTS, ILLINOIS

SCALE: 1"=20'  
DATE 08-01-2007

DRAWN BY BR  
DESIGNED BY VJ  
CHECKED BY JAC