

F.A.P. RTE.	SECTION	COUNTY	TOTAL SHEETS	SHEET NO.
353	11-5-N-1	COOK	79	44
STA.	TO STA.			
FED. ROAD DIST. NO. 1 ILLINOIS FED. AID PROJECT				

CONTRACT NO. 62949

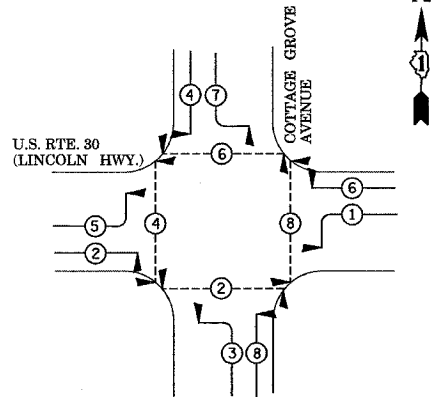
SCHEDULE OF QUANTITIES

ITEM	UNIT	QUANTITY
SIGN PANEL - TYPE 2	SQ FT	52.50
CONDUIT IN TRENCH, 1" DIA., GALVANIZED STEEL	FOOT	105
CONDUIT IN TRENCH, 2" DIA., GALVANIZED STEEL	FOOT	765
CONDUIT IN TRENCH, 2" DIA., GALVANIZED STEEL	FOOT	180
CONDUIT IN TRENCH, 4" DIA., GALVANIZED STEEL	FOOT	10
CONDUIT PUSHED, 2" DIA., GALVANIZED STEEL	FOOT	315
CONDUIT PUSHED, 4" DIA., GALVANIZED STEEL	FOOT	385
CONDUIT SPLICE	EACH	1
HANDHOLE	EACH	5
HEAVY-DUTY HANDHOLE	EACH	6
DOUBLE HANDHOLE	EACH	1
TRENCH AND BACKFILL FOR ELECTRICAL WORK	FOOT	900
FULL-ACTUATED CONTROLLER AND TYPE V CABINET, SPECIAL	EACH	1
ELECTRIC CABLE IN CONDUIT, GROUNDING, NO.6 1C	FOOT	599
ELECTRIC CABLE IN CONDUIT, SIGNAL, NO.14 2C	FOOT	1308
ELECTRIC CABLE IN CONDUIT, SIGNAL, NO.14 3C	FOOT	1380
ELECTRIC CABLE IN CONDUIT, SIGNAL, NO.14 6C	FOOT	1088
ELECTRIC CABLE IN CONDUIT, SIGNAL, NO.14 7C	FOOT	1542
ELECTRIC CABLE IN CONDUIT, LEAD-IN, NO.14 1 PAIR	FOOT	2141
ELECTRIC CABLE IN CONDUIT, SERVICE, NO.6 2C	FOOT	119
STEEL MAST ARM ASSEMBLY AND POLE, 24 FT.	EACH	2
STEEL MAST ARM ASSEMBLY AND POLE, 34 FT.	EACH	1
STEEL MAST ARM ASSEMBLY AND POLE, 36 FT.	EACH	1
TRAFFIC SIGNAL POST, GALVANIZED STEEL, 14 FT.	EACH	2
TRAFFIC SIGNAL POST, GALVANIZED STEEL, 16 FT.	EACH	2
CONCRETE FOUNDATION, TYPE A	FOOT	20
CONCRETE FOUNDATION, TYPE D	FOOT	4
CONCRETE FOUNDATION, TYPE E, 30-INCH DIA.	FOOT	60
SIGNAL HEAD, L.E.D., 1-FACE, 3-SECTION, MAST ARM MOUNTED	EACH	4
SIGNAL HEAD, L.E.D., 1-FACE, 5-SECTION, BRACKET MOUNTED	EACH	4
SIGNAL HEAD, L.E.D., 1-FACE, 5-SECTION, MAST ARM MOUNTED	EACH	4
PEDESTRIAN SIGNAL HEAD, L.E.D., 1-FACE, BRACKET MOUNTED	EACH	8
PEDESTRIAN PUSH-BUTTON	EACH	8
TEMPORARY TRAFFIC SIGNAL INSTALLATION	EACH	1
REMOVE AND REINSTALL ELECTRIC CABLE FROM CONDUIT	FOOT	369
REMOVE EXISTING TRAFFIC SIGNAL EQUIPMENT	EACH	1
REMOVE EXISTING HANDHOLE	EACH	9
REMOVE EXISTING CONCRETE FOUNDATION	EACH	8
TRAFFIC SIGNAL BACKPLATE, LOUVERED ALUMINUM	EACH	8
INDUCTIVE LOOP DETECTOR	EACH	9
DETECTOR LOOP, TYPE 1	FOOT	780
UNINTERRUPTIBLE POWER SUPPLY	EACH	1
SERVICE INSTALLATION, POLE MOUNTED	EACH	1
TEMPORARY TRAFFIC SIGNAL TIMING	EACH	1

CABLE PLAN LEGEND

EXISTING	PROPOSED	EXISTING	PROPOSED	DESCRIPTION
Ⓞ	Ⓞ	①	①	GROUND CABLE IN CONDUIT NO. 6 SOLID COPPER (GREEN)
Ⓜ	Ⓜ	②	②	FIBER OPTIC CABLE IN CONDUIT NO. 62.5/125 MM12F SM12F
Ⓜ	Ⓜ	Ⓜ	Ⓜ	SIGNAL FACE WITH BACKPLATE, "P" INDICATES PROGRAMMED HEAD
Ⓜ	Ⓜ	Ⓜ	Ⓜ	CONTROLLER CABINET
Ⓜ	Ⓜ	Ⓜ	Ⓜ	SERVICE INSTALLATION, (P) POLE OR (G) GROUND MOUNT
Ⓜ	Ⓜ	Ⓜ	Ⓜ	TELEPHONE CONNECTION
Ⓜ	Ⓜ	Ⓜ	Ⓜ	DETECTOR LOOP
Ⓜ	Ⓜ	Ⓜ	Ⓜ	PERFORMED DETECTOR LOOP
Ⓜ	Ⓜ	Ⓜ	Ⓜ	RAILROAD CONTROL CABINET
Ⓜ	Ⓜ	Ⓜ	Ⓜ	ILLUMINATED SIGN "NO LEFT TURN"
Ⓜ	Ⓜ	Ⓜ	Ⓜ	ILLUMINATED SIGN "NO RIGHT TURN"
Ⓜ	Ⓜ	Ⓜ	Ⓜ	GROUND ROD AT HANDHOLE (H), DOUBLE HANDHOLE (H), OR CONTROLLER (C).
Ⓜ	Ⓜ	Ⓜ	Ⓜ	GROUND ROD AT POST (P), OR MAST ARM POLE (MA).
Ⓜ	Ⓜ	Ⓜ	Ⓜ	GROUND ROD AT ELECTRIC SERVICE INSTALLATION
Ⓜ	Ⓜ	Ⓜ	Ⓜ	MICROWAVE VEHICLE SENSOR
Ⓜ	Ⓜ	Ⓜ	Ⓜ	VIDEO DETECTOR
Ⓜ	Ⓜ	Ⓜ	Ⓜ	CLOSED CIRCUIT TV
Ⓜ	Ⓜ	Ⓜ	Ⓜ	UNINTERRUPTIBLE POWER SUPPLY

CONTROLLER SEQUENCE



LEGEND

- ⊛ DUAL ENTRY PHASE
- ⊛ PEDESTRIAN PHASE
- * NUMBER REFERS TO ASSOCIATED PHASE

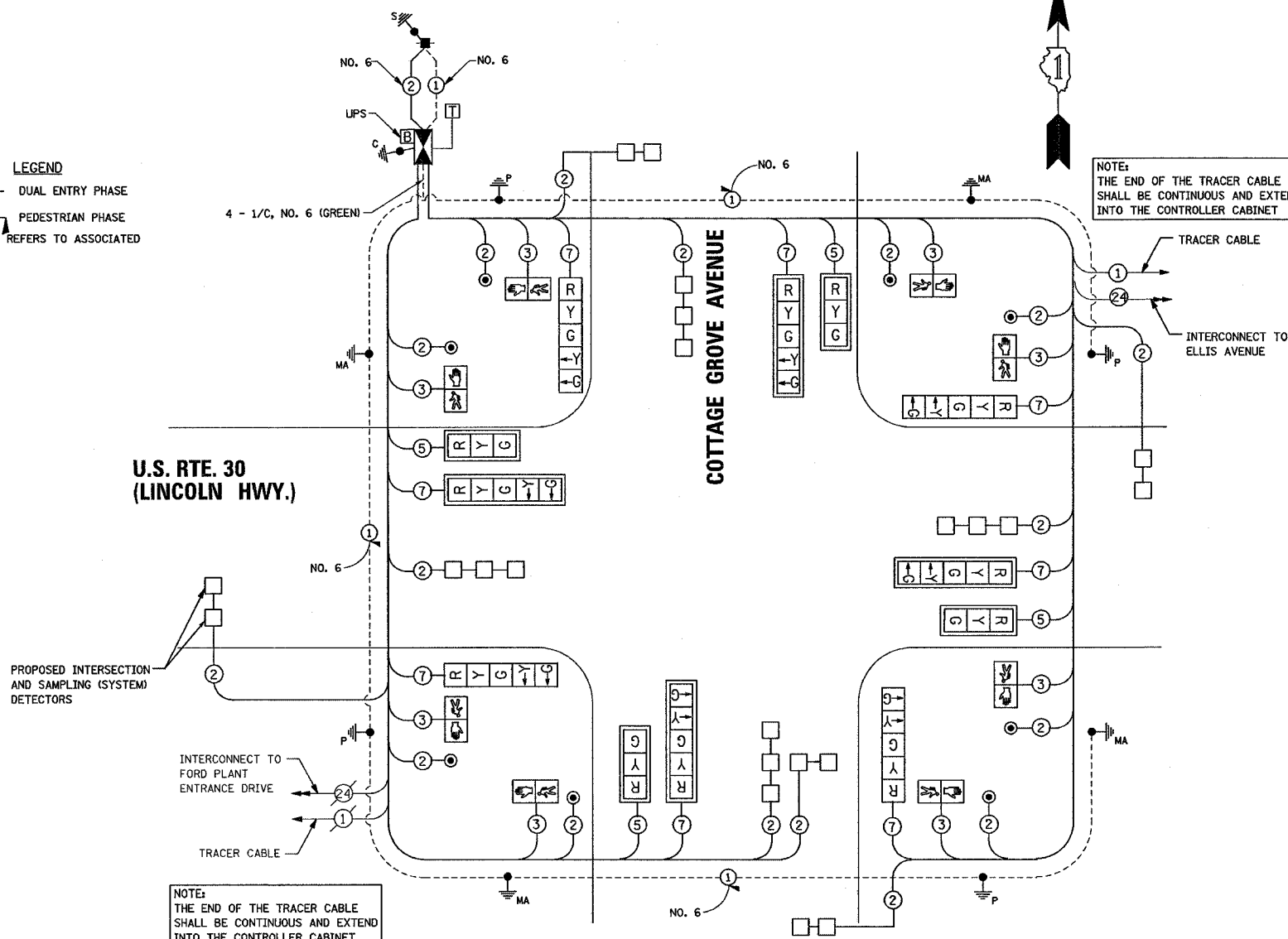
PHASE DESIGNATION DIAGRAM

DUAL ENTRY - ALL LEGS PERMITTED LEFT TURN PHASING

U.S. RTE. 30 (LINCOLN HWY.)

COTTAGE GROVE AVENUE

CABLE PLAN



NOTE: THE TRAFFIC SIGNAL CONTROL EQUIPMENT FOR THIS PROJECT SHALL BE "EAGLE" TO MATCH THE ADJACENT SYSTEM.

RESTORATION OF WORK AREA. RESTORATION OF THE TRAFFIC SIGNAL WORK AREA SHALL BE INCIDENTAL TO THE RELATED PAY ITEM SUCH AS FOUNDATION, CONDUIT, HANDHOLE, TRENCH AND BACKFILL, ETC., AND NO EXTRA COMPENSATION SHALL BE ALLOWED. ALL ROADWAY SURFACES SUCH AS SHOULDERS, MEDIAN, SIDEWALKS, PAVEMENT, ETC. SHALL BE REPLACED IN KIND. ALL DAMAGE TO MOWED LAWNS SHALL BE REPLACED WITH AN APPROVED SOD, AND ALL DAMAGE TO UNMOWED FIELDS SHALL BE SEEDED IN ACCORDANCE WITH STANDARD SPECIFICATIONS 252 AND 250 RESPECTIVELY.

I.D.O.T. TRAFFIC SIGNAL INSTALLATION ELECTRICAL SERVICE REQUIREMENTS					TOTAL WATTAGE
TYPE	NO. LAMPS	WATTAGE INCAND.	WATTAGE LED	X % OPERATION	
SIGNAL (RED)	12	135	17	0.50	102.00
(YELLOW)	12	135	25	0.25	75.00
(GREEN)	12	135	15	0.25	45.00
ARROW	16	135	12	0.10	19.20
PED. SIGNAL	8	90	25	1.00	200.0
CONTROLLER	1	100	100	1.00	100.00
ILLUM. SIGN	-	84	-	0.05	-
FLASHER	-	-	-	0.50	-
TOTAL =					541.20

ENERGY COSTS - BILLED TO: ILLINOIS DEPT. OF TRANSPORTATION (ADDRESS) 201 WEST CENTER COURT SCHALMBURG, ILLINOIS 60196-1096

ENERGY SUPPLY - CONTACT: JERRY NISSEN (708) 235-2340 COMPANY: COMMONWEALTH EDISON

FOUNDATION (DEPTH)	(FT.) (m)	CABLE SLACK	(FT.) (m)	VERTICAL	(FT.) (m)
TYPE A - POST	4 (1.2)	HANDHOLE	6.5 (2.0)	ALL FOUNDATIONS	3.5 (1.0)
D - CONTROLLER	4 (1.2)	DOUBLE HANDHOLE	13 (4.0)	MAST ARM (L) POLE	20' + L - 2 = (6m+L-0.6m)=
E - M. ARM POLE	-	SIGNAL POST	2 (1.0)	BRACKET MOUNTED	13 (4.0)
24" (600mm)	10 (3.0)	CONTROLLER CAB.	1 (0.5)	PED. PUSHBUTTON	4 (1.2)
30" (750mm)	15 (4.6)	FIBER OPTIC	13 (4.0)	ELECTRIC SERVICE	13.5 (4.1)
		ELECTRIC SERVICE	1 (0.5)	SERVICE TO GROUND	13.5 (4.1)
		GROUND CABLE	1 (0.5)	POST MOUNTED	6 (1.8)

SEITON ENGINEERING
SERVICE CORPORATION
CIVIL ENGINEERS

19 S. BOWHILL STREET
PALATINE, ILLINOIS 60067
VOICE: 847-776-7200 FAX: 847-776-7239

REVISIONS	
NAME	DATE

ILLINOIS DEPARTMENT OF TRANSPORTATION

CABLE PLAN, PHASE DESIGNATION DIAGRAM, EMERGENCY VEHICLE PREEMPTION SEQUENCE AND SCHEDULE OF QUANTITIES

US ROUTE 30 (LINCOLN HIGHWAY) AT COTTAGE GROVE AVENUE FORD HEIGHTS, ILLINOIS

SCALE: N.T.S. DATE 08-01-2007

DRAWN BY BR
DESIGNED BY VO
CHECKED BY JAC