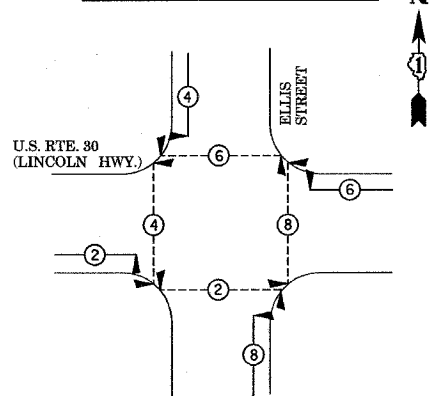


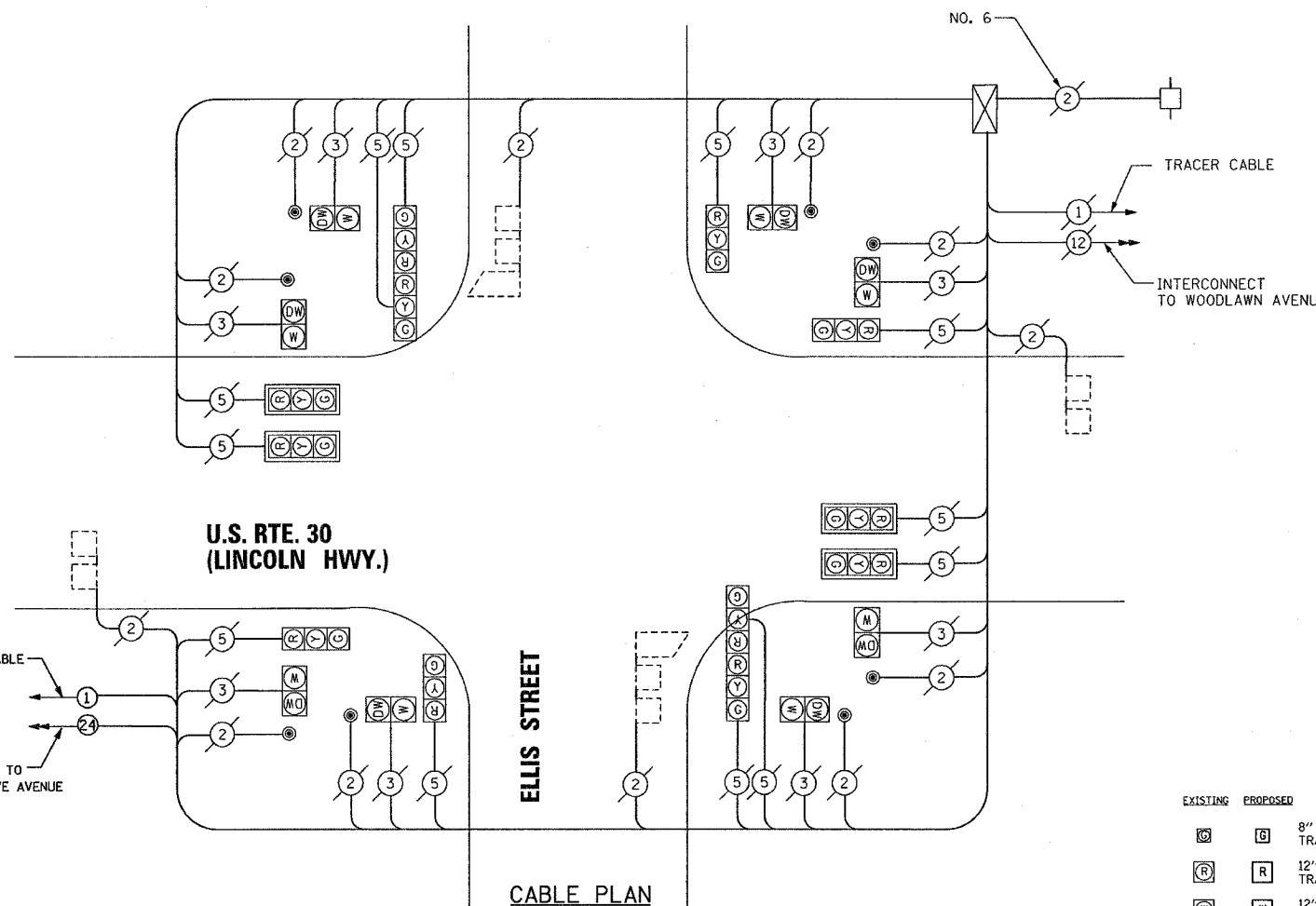
CONTROLLER SEQUENCE



LEGEND

- (*) DUAL ENTRY PHASE
- (*) PEDESTRIAN PHASE
- * NUMBER REFERS TO ASSOCIATED PHASE

PHASE DESIGNATION DIAGRAM



NOTE:
THE END OF THE TRACER CABLE SHALL BE CONTINUOUS AND EXTEND INTO THE CONTROLLER CABINET

CABLE PLAN LEGEND

EXISTING	PROPOSED	EXISTING	PROPOSED
(S)	(S)	(1)	(1)
(R)	(R)	(24)	(24)
(W)	(W)	(R)	(R)
(P)	(P)	(M)	(M)
(C)	(C)	(V)	(V)
(E)	(E)	(G)	(G)
(T)	(T)	(H)	(H)
(D)	(D)	(P)	(P)
(P)	(P)	(S)	(S)
(2)	(2)	(M)	(M)
		(V)	(V)
		(G)	(G)

NOTE:
THE TRAFFIC SIGNAL CONTROL EQUIPMENT FOR THIS PROJECT SHALL BE "EAGLE" TO MATCH THE ADJACENT SYSTEM.

RESTORATION OF WORK AREA. RESTORATION OF THE TRAFFIC SIGNAL WORK AREA SHALL BE INCIDENTAL TO THE RELATED PAY ITEM SUCH AS FOUNDATION, CONDUIT, HANDHOLE, TRENCH AND BACKFILL, ETC., AND NO EXTRA COMPENSATION SHALL BE ALLOWED. ALL ROADWAY SURFACES SUCH AS SHOULDERS, MEDIAN, SIDEWALKS, PAVEMENT, ETC. SHALL BE REPLACED IN KIND. ALL DAMAGE TO MOWED LAWNS SHALL BE REPLACED WITH AN APPROVED SOD, AND ALL DAMAGE TO UNMOWED FIELDS SHALL BE SEEDING IN ACCORDANCE WITH STANDARD SPECIFICATIONS 252 AND 250 RESPECTIVELY.

I.D.O.T. TRAFFIC SIGNAL INSTALLATION ELECTRICAL SERVICE REQUIREMENTS					TOTAL WATTAGE
TYPE	NO. LAMPS	WATTAGE INCAND.	WATTAGE LED	X% OPERATION	
SIGNAL (RED)	12	135	17	0.50	810.0
(YELLOW)	12	135	25	0.25	405.0
(GREEN)	12	135	15	0.25	405.0
ARROW	-	135	12	0.10	-
PED. SIGNAL	8	90	25	1.00	720.0
CONTROLLER	1	100	100	1.00	100.0
ILLUM. SIGN	-	84	-	0.05	-
FLASHER	0	-	-	0.50	-
TOTAL =					2440.0

FOUNDATION (DEPTH)	(FT.) (m)	CABLE SLACK	(FT.) (m)	VERTICAL	(FT.) (m)
TYPE A - POST	4 (1.2)	HANDHOLE	6.5 (2.0)	ALL FOUNDATIONS	3.5 (1.0)
D - CONTROLLER	4 (1.2)	DOUBLE HANDHOLE	13 (4.0)	MAST ARM (L) POLE	20' + L - 2 = (6m+L-0.6m)=
E - M. ARM POLE	-	SIGNAL POST	2 (1.0)	BRACKET MOUNTED	13 (4.0)
24" (600mm)	10 (3.0)	CONTROLLER CAB.	1 (0.5)	PED. PUSHBUTTON	4 (1.2)
30" (750mm)	15 (4.6)	FIBER OPTIC	13 (4.0)	ELECTRIC SERVICE	13.5 (4.1)
		ELECTRIC SERVICE	1 (0.5)	SERVICE TO GROUND	13.5 (4.1)
		GROUND CABLE	1 (0.5)	POST MOUNTED	6 (1.8)

SETON ENGINEERING
SERVICE CORPORATION
CIVIL ENGINEERS

19 S. BOTHWELL STREET
PALATINE, ILLINOIS 60067
VOICE: 847-716-7200 FAX: 847-716-7239
SETON PROJECT # 7002001-050

REVISIONS	
NAME	DATE

ILLINOIS DEPARTMENT OF TRANSPORTATION

CABLE PLAN AND PHASE DESIGNATION DIAGRAM

US ROUTE 30 (LINCOLN HIGHWAY) AT ELLIS STREET
FORD HEIGHTS, ILLINOIS

SCALE: N.T.S.
DATE: 08-01-2007

DRAWN BY: BR
DESIGNED BY: VO
CHECKED BY: JAC