

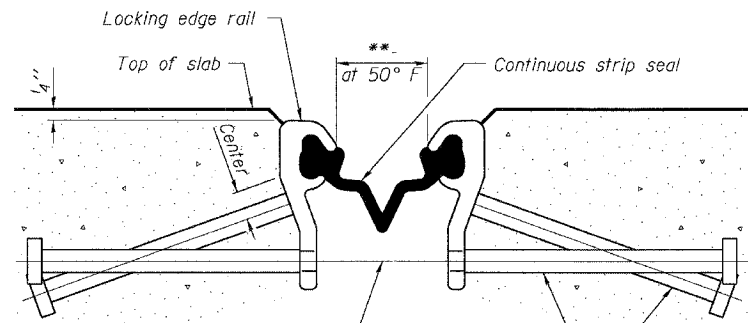
STATE OF ILLINOIS
DEPARTMENT OF TRANSPORTATION

ROUTE NO.	DISTRICT	COUNTY	SHEET NO.	SHEET	SHEET NO. 5
FAP 308	104-BY-1BR1D	CARROLL	40	17	9 SHEETS
FED. ROAD DIST. NO. 7	ILLINOIS	FED. PROJ. NO.			

Contract #64D14

* Omit weld at seal opening.

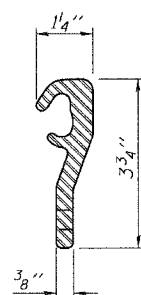
** When joint is fixed, dimension is set at 1 1/2".



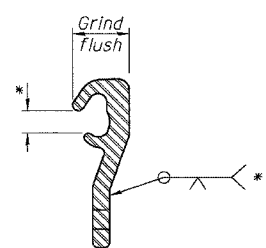
7/16" ϕ holes at 4'-0" cts. for 3/8" ϕ bolts. All bolts shall be burned, sawed, or chipped off flush with the plates after forms are removed, typ.

Place 1/2" ϕ x 6" granular or solid flux filled headed studs conforming to Article 1006.32 of the Std. Specs., automatically end welded at 1'-0" alt. cts.

SECTION THRU STRIP SEAL JOINT FOR OVERLAY OVER DECK BEAMS



LOCKING EDGE RAIL



LOCKING EDGE RAIL SPLICE

Notes:

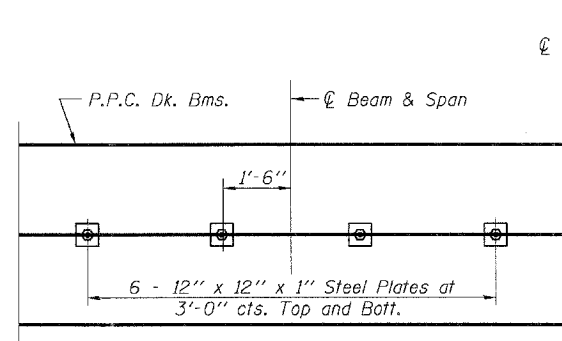
The strip seal shall be made continuous and shall have a minimum thickness of 1/4". The configuration of the strip seal shall match the configuration of the Locking Edge Rails.

The height and thickness of the Locking Edge Rails shown are minimum dimensions. The actual configuration of the Locking Edge Rails and matching strip seal may vary from manufacturer to manufacturer. Flanged edge rails will not be allowed.

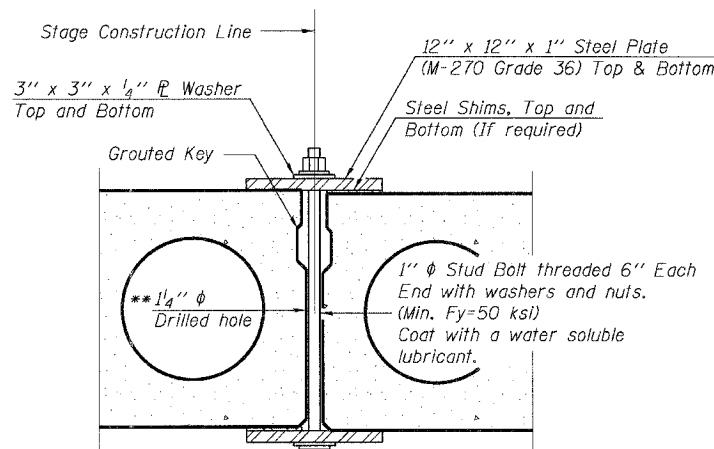
The inside of the Locking Edge Rail groove shall be free of weld residue.

Locking Edge Rails may be spliced at slope discontinuities and stage construction joints.

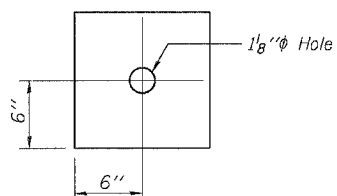
The manufacturer's recommended installation methods shall be followed.



PLAN



SECTION

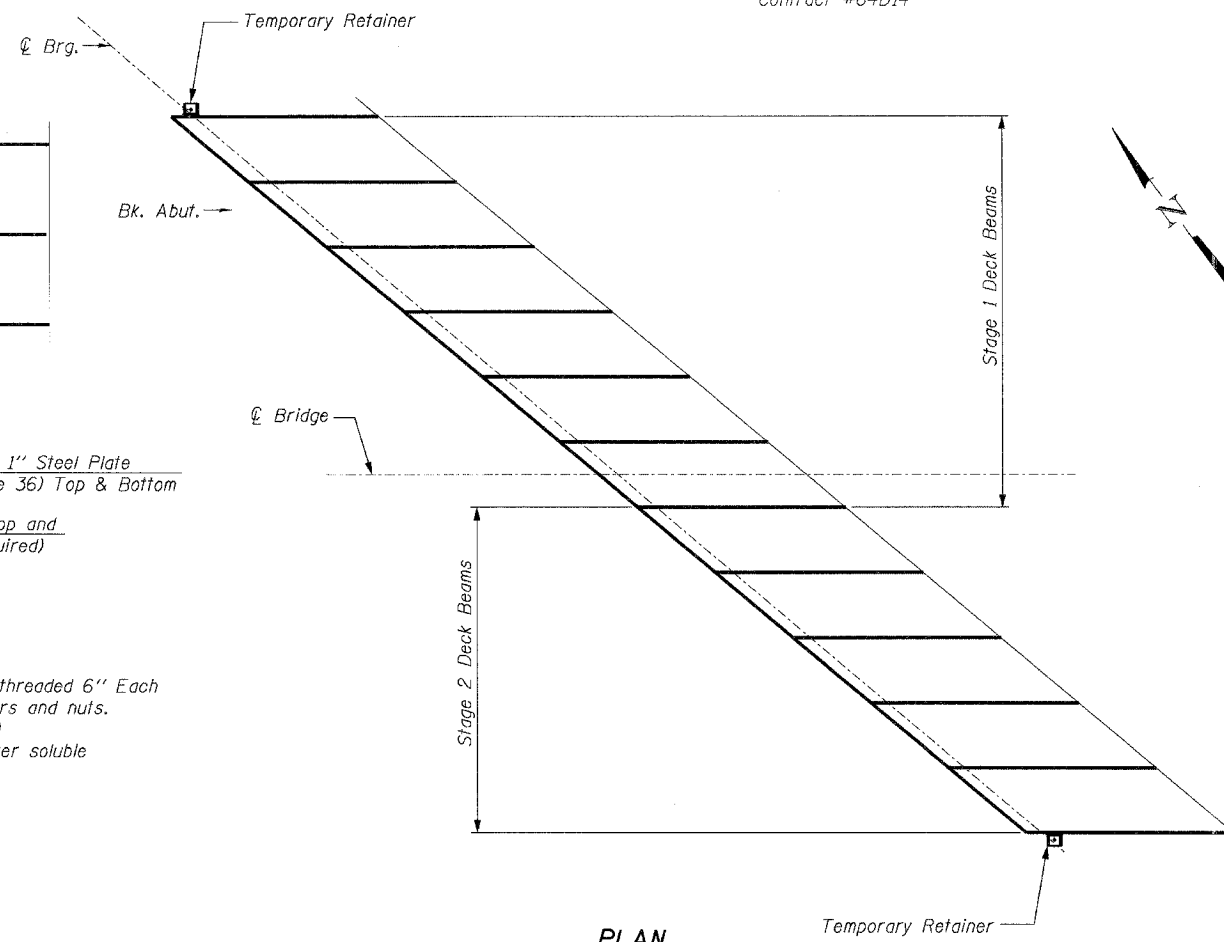


CLAMPING PLATE

SHEAR KEY CLAMPING DETAILS AT STAGE CONST. JT.

Cost included with Precast Prestressed Concrete Deck Beams.
See Stage Construction Details for traffic lanes.

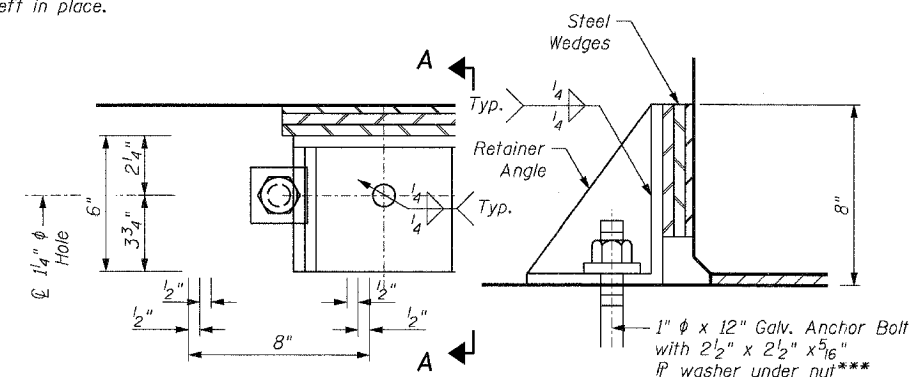
** As an alternate to the drilled holes, the Contractor may request the Fabricator to cast 2" diameter semi-circular recesses in the sides of each beam adjacent to the stage construction line. These recesses should align to form a hole at the appropriate locations for the clamping device bolts. If the Contractor elects to use this alternate, the details shall be identified on the shop drawings.



PLAN

West Abutment Shown, East Abutment Similar

After the concrete wearing surface is poured and cured, the retainer angles shall be removed. Anchor bolts may be left in place.



TEMPORARY SIDE RETAINER DETAIL

SECTION A-A

*** Anchor bolts or approved threaded rod shall be placed in drilled holes and grouted in place in accordance with Article 584 of the Standard Specifications. Cost of Retainer and accessories are included with Precast Prestressed Concrete Deck Beams

ILLINOIS DEPARTMENT OF TRANSPORTATION
PREFORMED JOINT STRIP SEAL & MISCELLANEOUS DETAILS

IL-84 OVER A DRAINAGE DITCH
FAP ROUTE 308 SECTION (104-BY-1BR1D)
CARROLL COUNTY
STATION 566+38
STRUCTURE NO. 008-0016

SCALE: NONE
DATE 10/10/07

DESIGNED	GPM
CHECKED	BRT
DRAWN	GPM
CHECKED	BRT