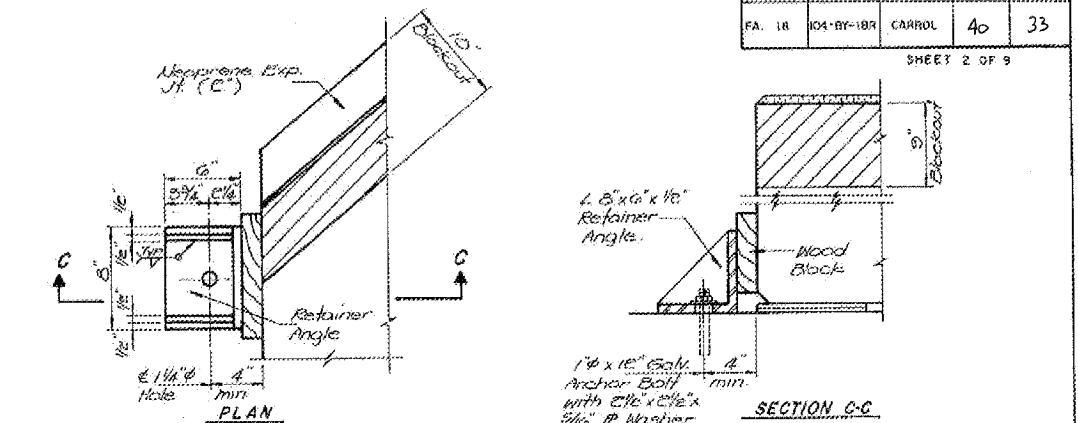
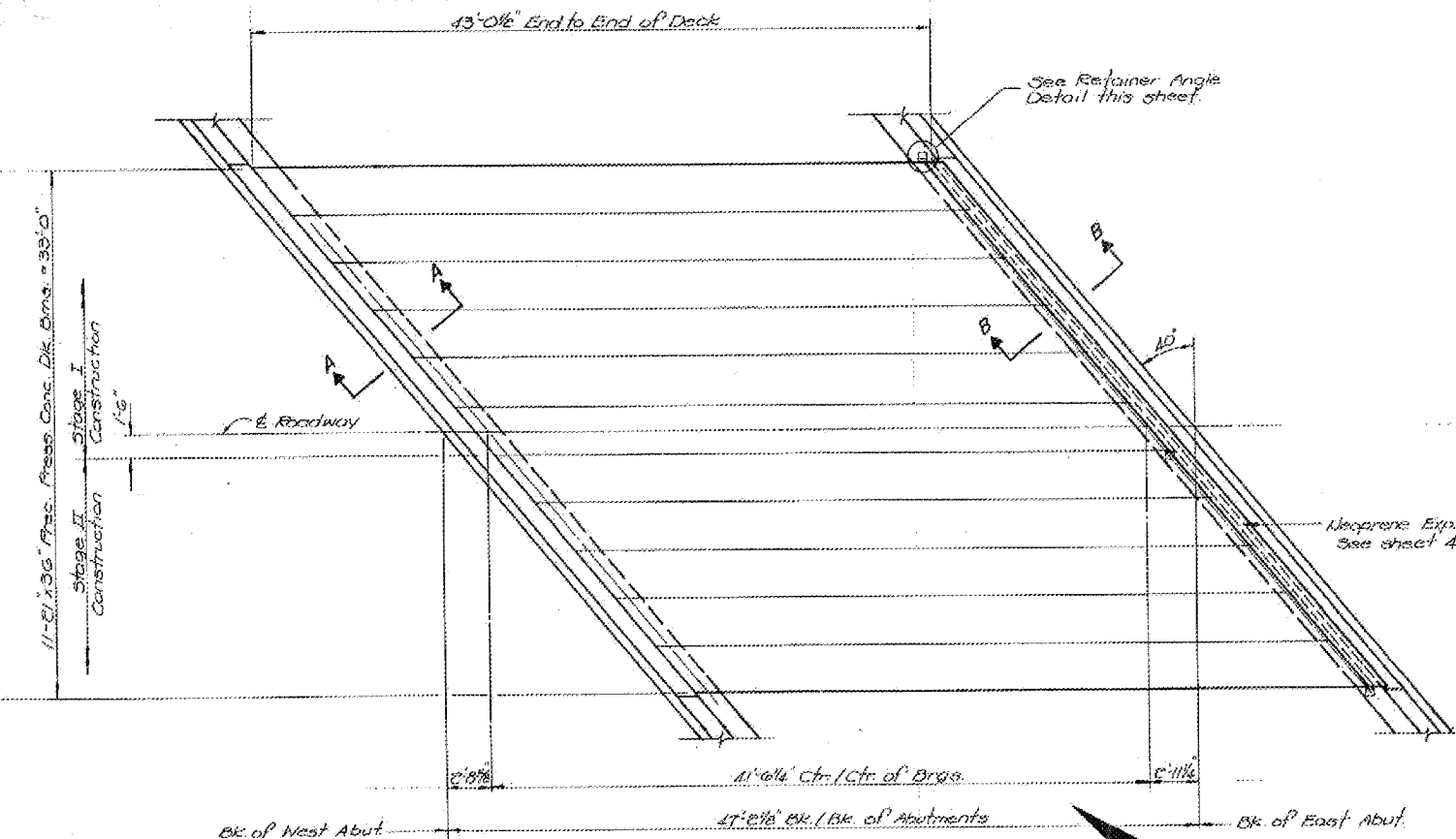


FOR INFORMATION ONLY

ROUTE NO.	SECTION	COUNTY	TOTAL SHEETS	SHEET NO.
FA. 18	104-BY-1BR	CARROLL	40	33

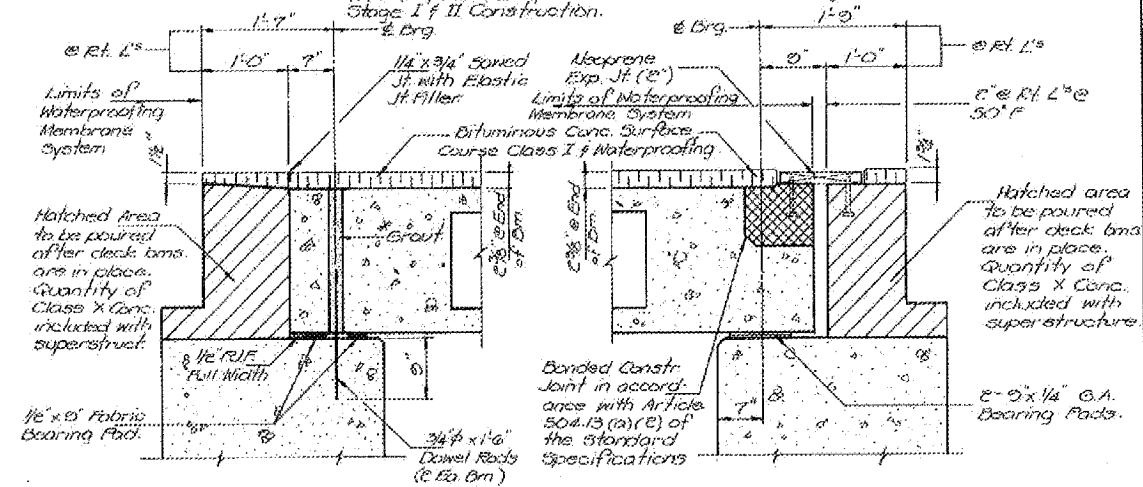
SHEET 2 OF 9



RETAINER ANGLE DETAIL AT EXPANSION END

NOTES:

- Anchor bolts may be cast into the masonry or placed in drilled holes & grouted in place, cost including retainer angles & accessories incidental to beams.
- After blockouts are poured & cured, the retainer angles shall be removed. Anchor bolts may be left in place, except at intermediate retainer angle between Stage I & II Construction.



SECTION A-A

* Nonshrink, nonmetallic grout. See BSP 15.

SECTION B-B

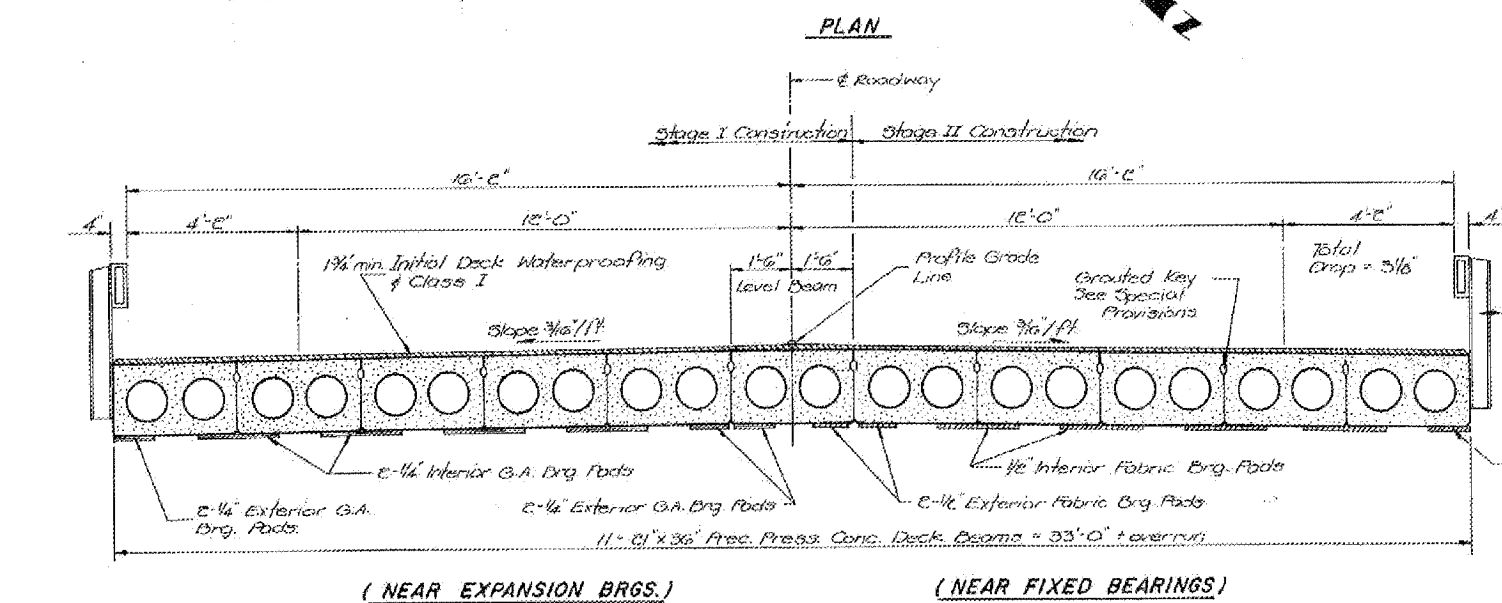
BILL OF MATERIAL

Bar	Lb	Size	Length	Shape
* F1	3	#5	23'-3"	---
* F2	3	#5	18'-3"	---
* F3	3	#5	3'-4"	L
** F1	16	#4	15'-8"	---
** F2	16	#4	17'-0"	---
** F3	5	#4	3'-4"	L
Rec Press. Conc. Deck Bm. E1 x 36	32.77		1480	
Reinforcement Bars	Lbs.		550	
Class X Concrete	Cu. Yd.		18.0	

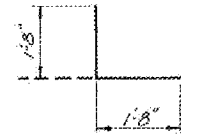
* See chit. 3 for location & details of these bars.
 ** See chits. 6 & 7 for location & details of these bars.

SUPERSTRUCTURE DECK

FA. RTE. 18 OVER TRIB. OF MISSISSIPPI RIVER
 F.A. RTE. 18, SECTION 104 BY-1BR
 CARROLL COUNTY
 STA. 566 + 37.11



CROSS SECTION (Looking East)



BAR F3

Note: F3 bars shall conform to the requirements of ASTM A 615 or M-53 Gr. 60, except that the elongation shall not be less than 20%.

DESIGNED:	DHC
CHECKED:	K.L.F.
DRAWN:	MS
CHECKED:	K.L.F.