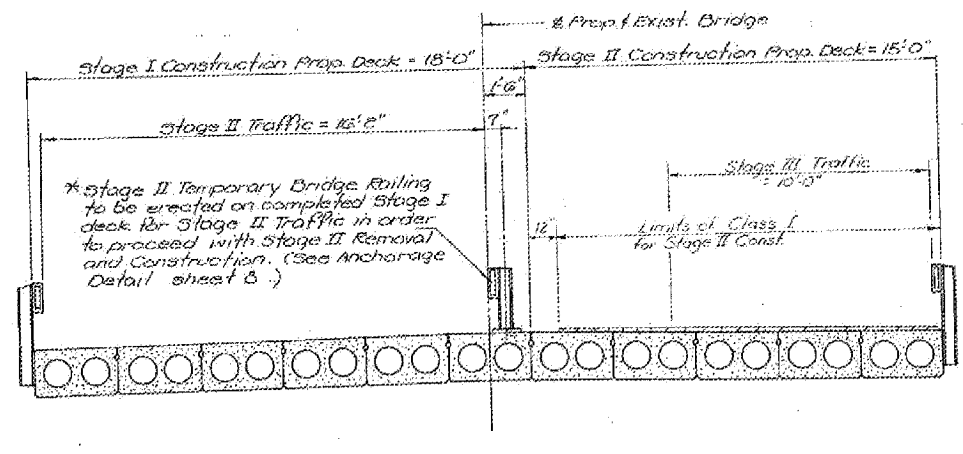
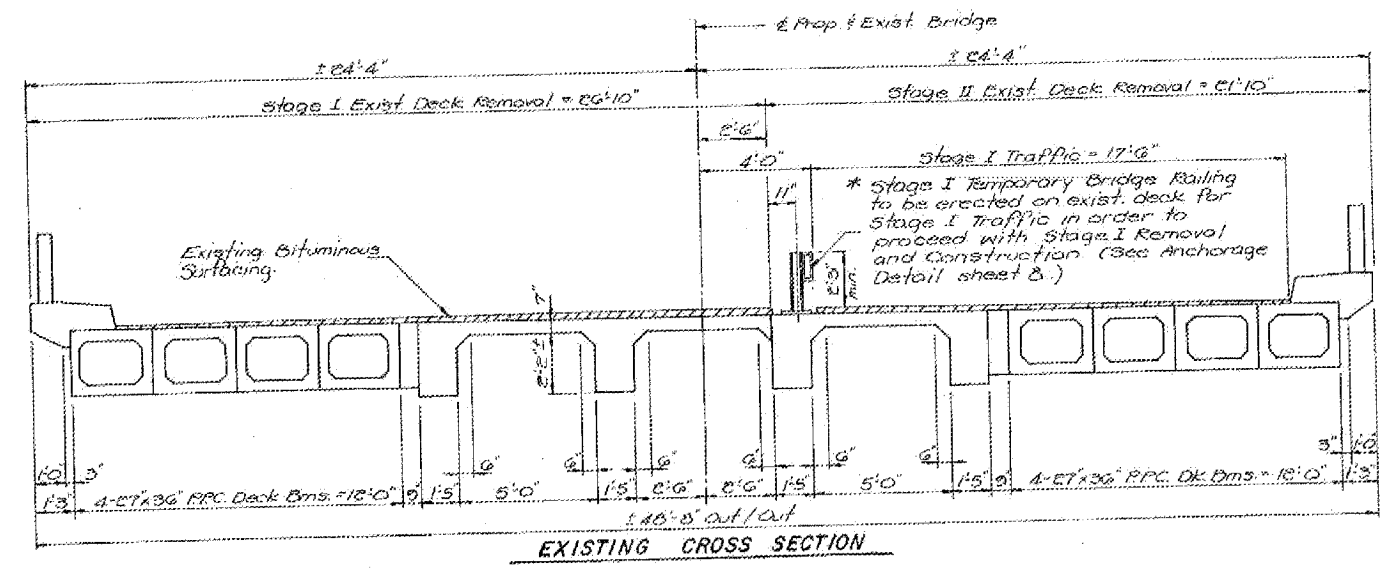
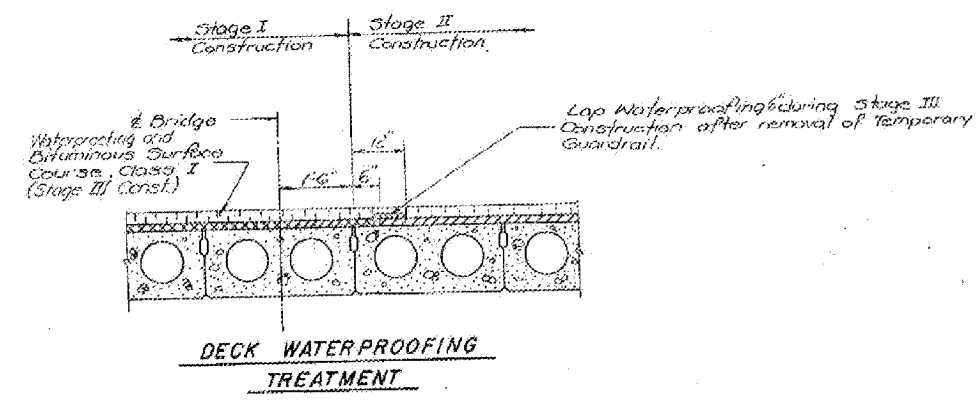


ROUTE NO.	SECTION	COUNTY	TOTAL SHEETS	SHEET NO.
F.A. 18	104 BY-1BR	CARROLL	40	40

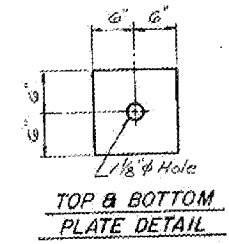
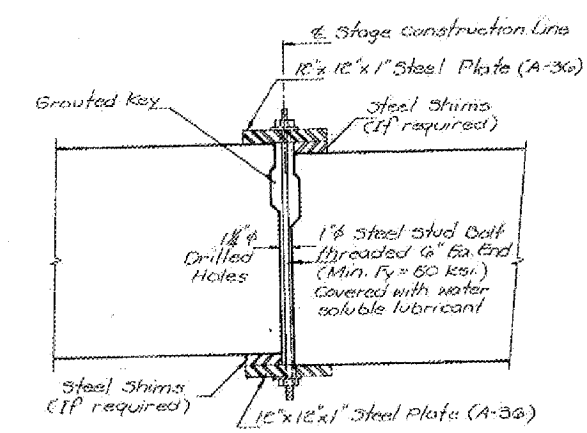
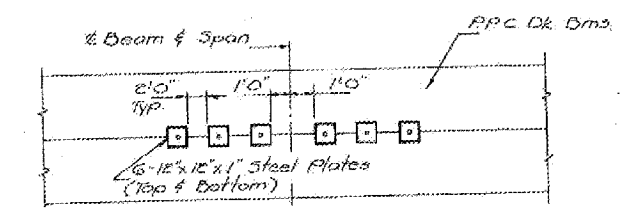
SHEET 9 OF 9



* Remove Rail & Post material from Stage I Temporary Bridge Railing for reuse on the Stage II Temporary Bridge Railing.



DESIGNED	DHC
CHECKED	KLF
DRAWN	JMB
CHECKED	KLF



Note: Key of Stage Construction Line shall be the last key-way to be grouted, and after traffic has been redirected as far as possible from the Stage Construction Line.

SHEAR KEY CLAMPING DETAIL AT STAGE CONSTRUCTION JOINT
(Cost incidental to Prec. Press. Conc. Deck Bms.)

FOR INFORMATION ONLY

STAGE CONSTRUCTION DETAILS
 F.A. RTE. 18 OVER TRIB. OF MISSISSIPPI RIVER
 F.A. RTE. 18, SECTION 104 BY-1BR
 CARROLL COUNTY
 STA. 566 + 37.11

DATE: 12/19/93