

# TYPICAL SECTIONS

RT STA. 243 + 54.27 TO STA. 347 + 39.04

LT STA. 244 + 89.43 TO STA. 247 + 39.04

RT STA. 248 + 02.71 TO STA. 250 + 15.56

LT STA. 248 + 02.71 TO STA. 251 + 79.15

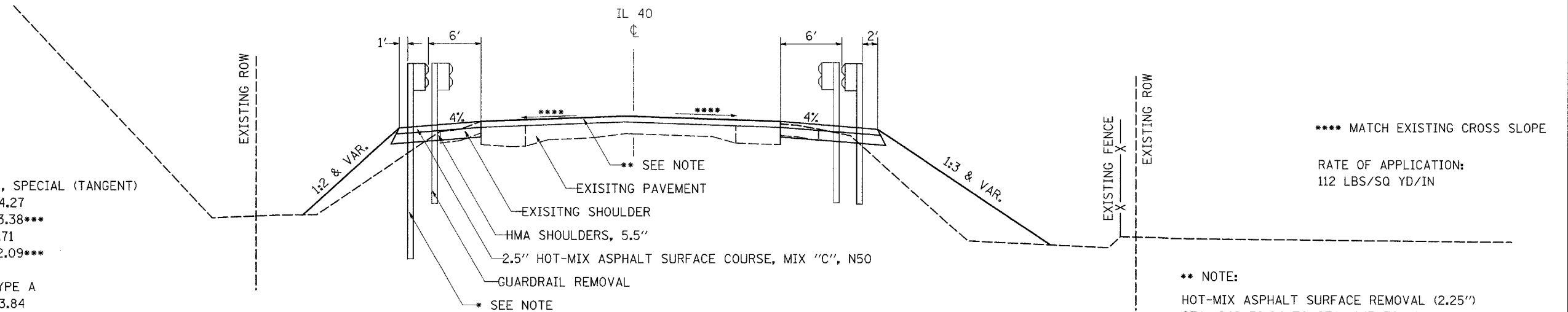
**\* NOTE:**

TRAFFIC BARRIER TERMINAL TYPE 1, SPECIAL (TANGENT)  
 RT STA. 243+54.28 TO STA. 244+04.27  
 LT STA. 245+23.38 TO STA. 245+73.38\*\*\*  
 RT STA. 249+19.71 TO STA. 249+69.71  
 LT STA. 250+82.08 TO STA. 251+32.09\*\*\*

STEEL PLATE BEAM GUARD RAIL, TYPE A  
 RT STA. 244+04.27 TO STA. 246+73.84  
 LT STA. 245+73.38 TO STA. 246+73.38\*\*\*  
 LT STA. 248+69.60 TO STA. 250+82.08\*\*\*  
 RT STA. 248+69.70 TO STA. 249+19.71

TRAFFIC BARRIER TERMINAL, TYPE 6A  
 LT STA. 246+73.38 TO STA. 247+19.54\*\*\*  
 RT STA. 246+73.84 TO STA. 247+19.54  
 LT STA. 248+23.88 TO STA. 248+69.60\*\*\*  
 RT STA. 248+24.00 TO STA. 248+69.70

\*\*\* 9' POST MUST BE USED



\*\*\*\* MATCH EXISTING CROSS SLOPE

RATE OF APPLICATION:  
 112 LBS/SQ YD/IN

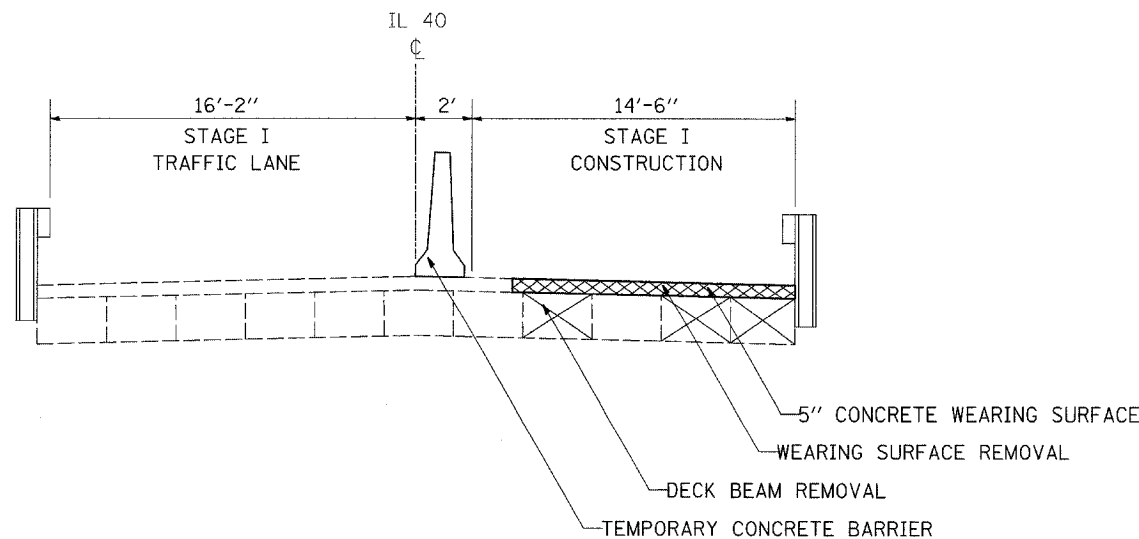
**\*\* NOTE:**

HOT-MIX ASPHALT SURFACE REMOVAL (2.25")  
 STA. 246+39.04 TO STA. 247+39.04  
 STA. 248+02.71 TO STA. 249+02.71

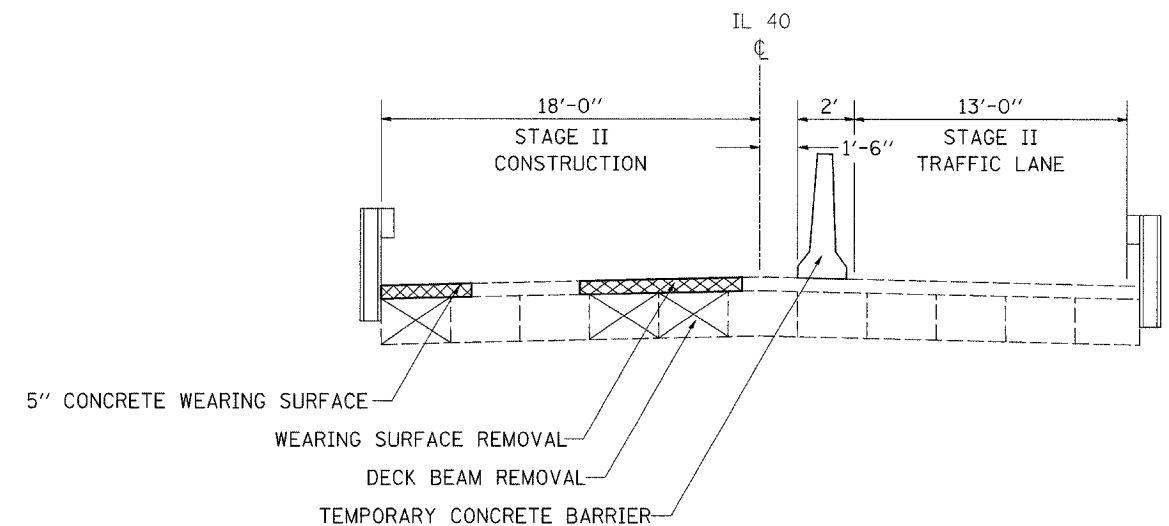
1.5" HOT-MIX ASPHALT SURFACE COURSE, MIX "C", N50  
 1" LEVELING BINDER (MM), N50  
 STA. 246+39.04 TO STA. 247+39.04  
 STA. 248+02.71 TO STA. 249+02.71

# STAGING TYPICALS

STAGE I



STAGE II



FILE NAME = c:\projects\p206907\c06907typ.dgn	USER NAME = dunoanfe	DESIGNED -	REVISED -	<b>STATE OF ILLINOIS DEPARTMENT OF TRANSPORTATION</b>	<b>TYPICAL SECTIONS</b>			F.A.P. RTE. 646	SECTION (5BR-1/D)	COUNTY CARROLL	TOTAL SHEETS 52	SHEET NO. 4
	PLOT SCALE = 5/8" = 1' IN.	DRAWN -	REVISED -		SCALE: 50	SHEET NO. 4 OF 52 SHEETS	STA.	TO STA.	CONTRACT NO. 64D29			
	PLOT DATE = Wed Oct 24 11:30:13 2007	CHECKED -	REVISED -		FED. ROAD DIST. NO. ILLINOIS FED. AID PROJECT							
		DATE -	REVISED -									