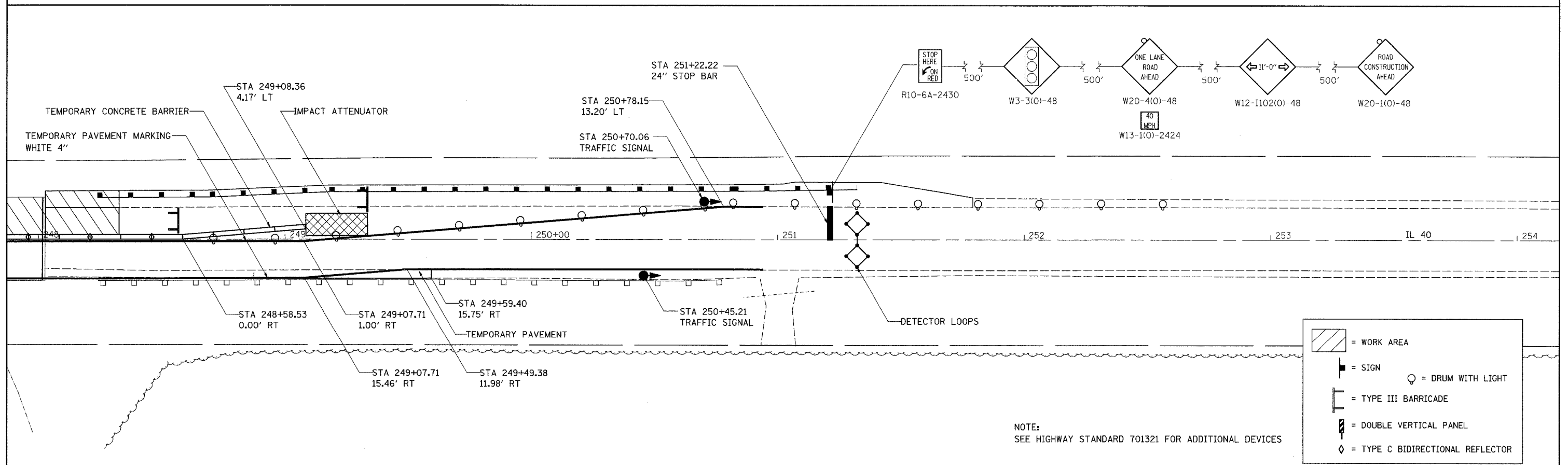
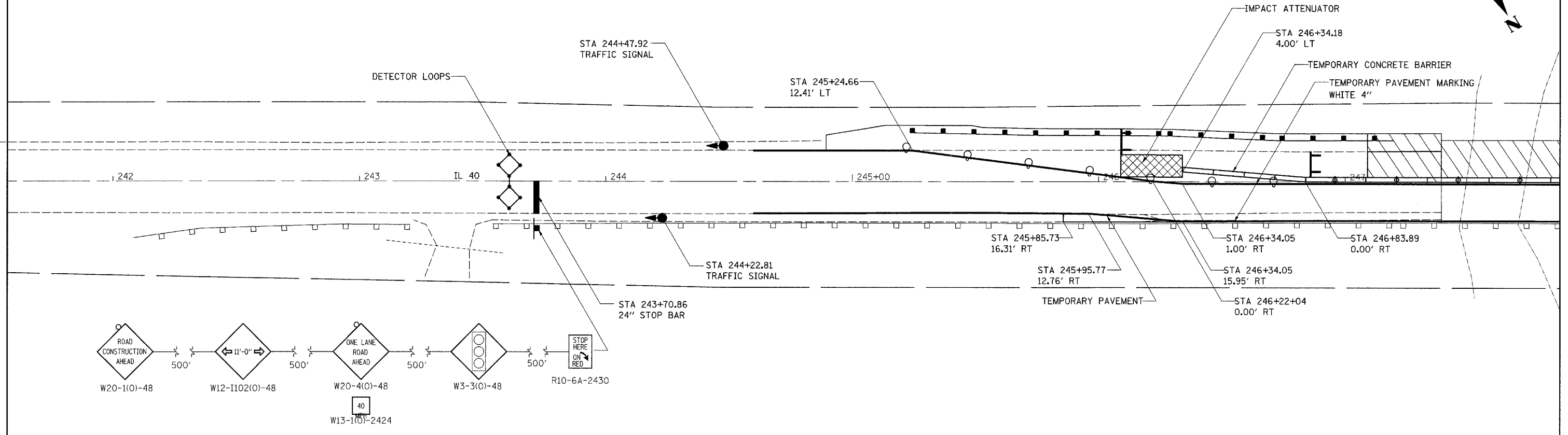


STAGE I



| | |
|--|----------------------------------|
| | = WORK AREA |
| | = SIGN |
| | = TYPE III BARRICADE |
| | = DOUBLE VERTICAL PANEL |
| | = TYPE C BIDIRECTIONAL REFLECTOR |
| | = DRUM WITH LIGHT |

NOTE:
SEE HIGHWAY STANDARD 701321 FOR ADDITIONAL DEVICES

FILE NAME =
c:\projects\p206907\d06907stg.dgn

USER NAME = duncanfe
PLOT SCALE = 20.0000' / IN.
PLOT DATE = Wed Oct 24 11:45:12 2007

DESIGNED - FD
DRAWN - FD
CHECKED - KN
DATE - 10/4/07

REVISED -
REVISED -
REVISED -
REVISED -

STATE OF ILLINOIS
DEPARTMENT OF TRANSPORTATION

IL 40 STAGING

SCALE: 20 SHEET NO. 25 OF 52 SHEETS STA. 242+00 TO STA. 254+00

| | | | | |
|---|---------------------|-------------------|--------------------|-----------------|
| F.A.P. RTE. 646 | SECTION (5BR-1D) | COUNTY CARROLL | TOTAL SHEETS 52 | SHEET NO. 25 |
| FED. ROAD DIST. NO. ILLINOIS FED. AID PROJECT | | | CONTRACT NO. 64D29 | |