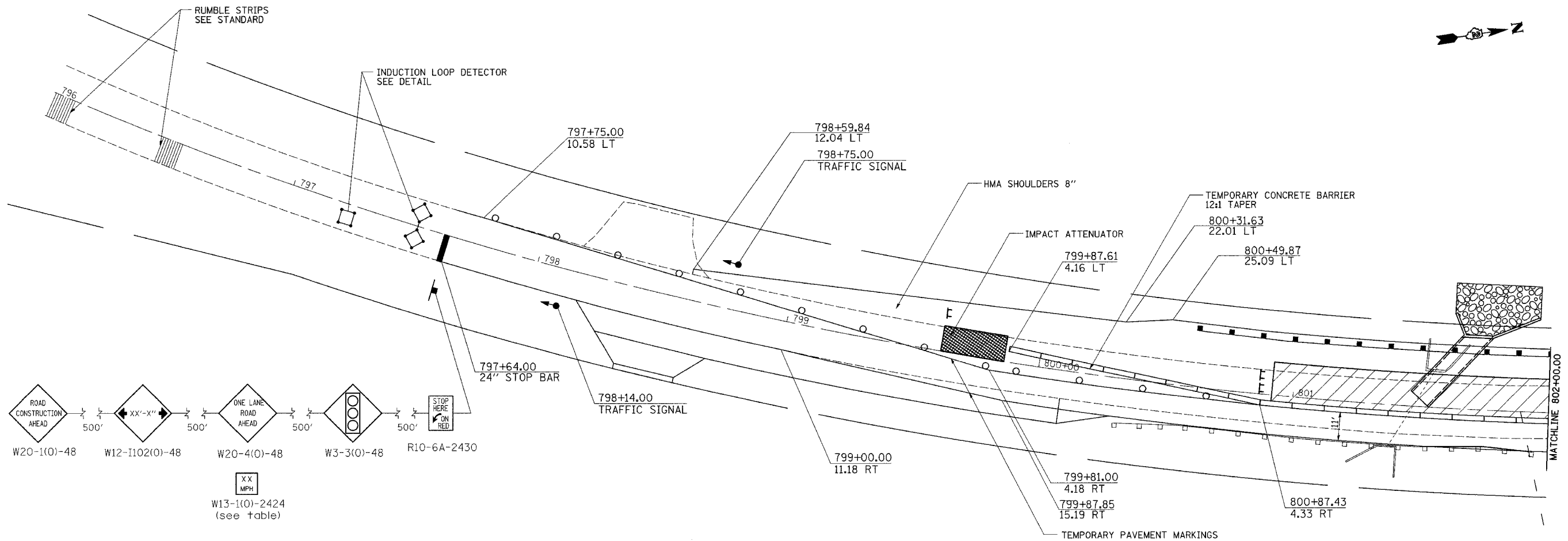


F.A.P. RTE.	SECTION	COUNTY	TOTAL SHEETS	SHEET NO.
642	11T	CARROLL	79	28
STA.		TO STA.		
FED. ROAD DIST. NO.		ILLINOIS	FED. AID PROJECT	

STAGE 2

STA 801+47 & 805+74.24



STAGE 2 NOTES

1. USE STANDARD 701321 FOR CULVERT WORK.
2. CONSTRUCT DOWNSTREAM SECTIONS OF CULVERTS INCLUDING END SECTIONS, RIP-RAP, AND EARTH WORK.
3. PLACE HMA SHOULDERS AT FULL WIDTH AND PROPOSED GUARD RAIL IN PREPARATION FOR STAGE 3.

	= WORK ZONE
	= TYPE III BARRICADE WITH FLASHING LIGHTS
	= SIGN
	= BARRICADE, OR DRUM WITH STEADY BURNING LIGHTS
	= INDUCTION LOOP DETECTOR
	= TRAFFIC SIGNAL
	= TEMPORARY RUMBLE STRIPS

REVISIONS	
NAME	DATE

ILLINOIS DEPARTMENT OF TRANSPORTATION

SCALE: VERT. _____
 HORIZ. _____

DATE _____ DRAWN BY _____
 CHECKED BY _____

STAGING PLAN SHEETS

PLOT DATE = Wed Oct 19 15:26:06 2007
 FILE NAME = c:\pwork\proj\200698\dl06088stg.dgn
 USER NAME = cshanebcr