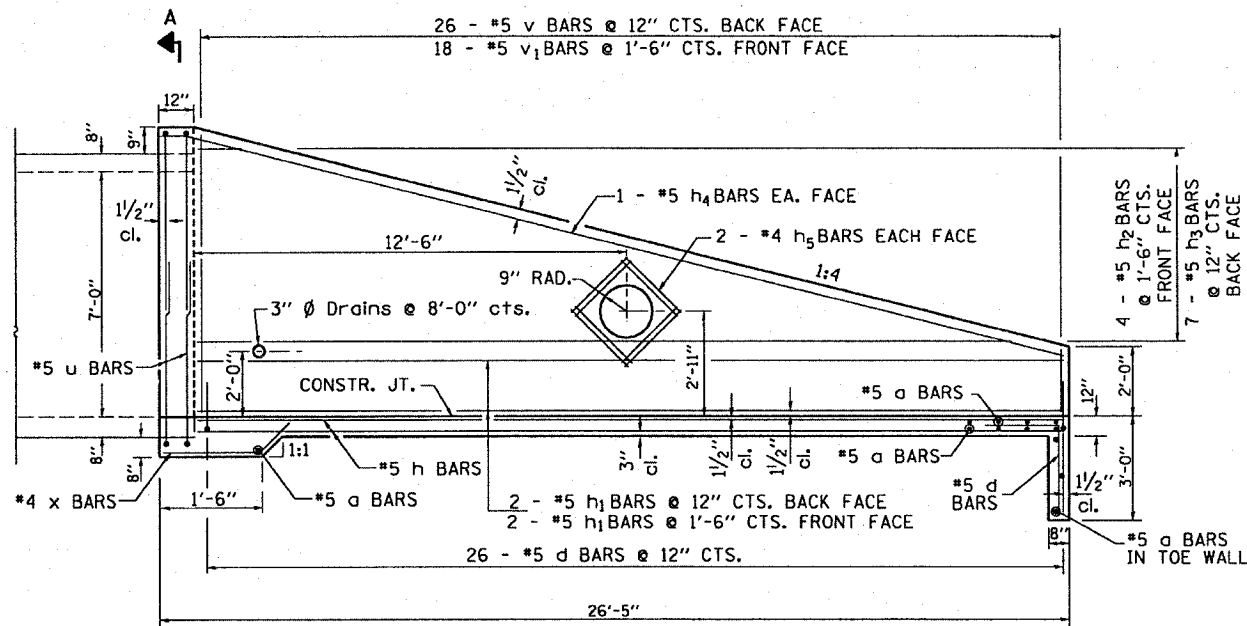


7'x7' Precast Double Box Culvert End Sections

RT. & LT. STA. 813 + 61

CONTRACT NO. 64082				
F.A.P. RTE.	SECTION	COUNTY	TOTAL SHEETS	SHEET NO.
642	11T	CARROLL	79	46
STA.		TO STA.		
FED. ROAD DIST. NO.		ILLINOIS FED. AID PROJECT		

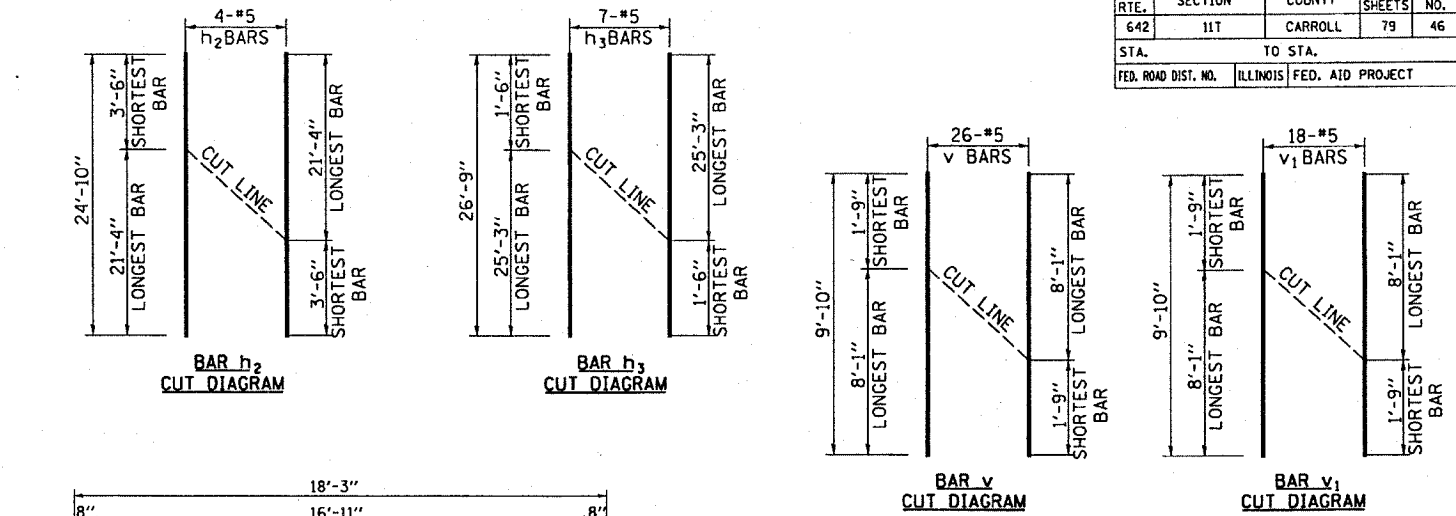


LONGITUDINAL SECTION

CUT BARS TO FIT AROUND PIPE CULVERT

MIN. LAP LENGTH

#5 = 2'-2"

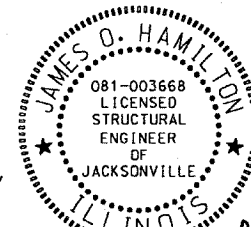
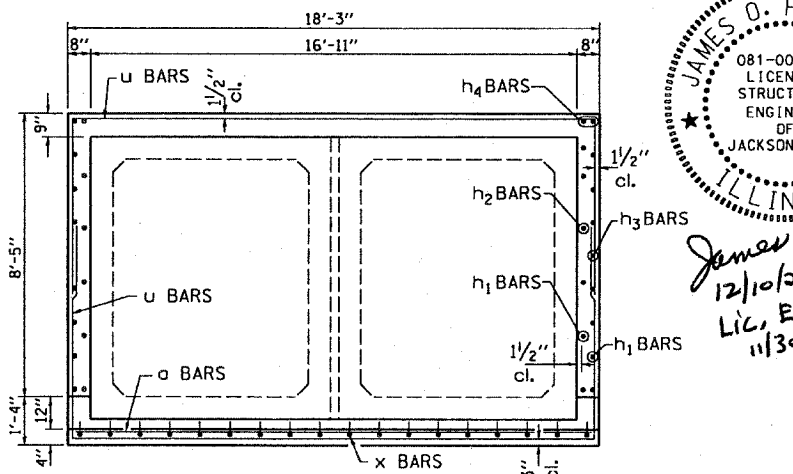


ORDER v₁ h₂ & h₃ BARS FULL LENGTH.
CUT AS SHOWN AND USE REMAINDER OF BARS IN OPPOSITE WALL.

BILL OF MATERIALS

BAR	NO.	SIZE	LENGTH	SHAPE
a	56	5	18'-0"	—
d	70	5	5'-6"	└
h	36	5	25'-2"	—
h ₁	8	5	24'-2"	—
h ₂	4	5	24'-10"	—
h ₃	7	5	26'-9"	—
h ₄	4	5	26'-10"	—
h ₅	16	4	6'-0"	—
v	26	5	9'-10"	—
v ₁	18	5	9'-10"	—
u	4	5	29'-8"	└
x	18	5	2'-3"	—
CLASS "SI" CONCRETE		CU YD	26.1	
REINFORCEMENT BARS		LB	3700	

SECTION THRU END SECTION



James O. Hamilton
12/10/2007
Lic. Expires
11/30/2008

GENERAL NOTES:

REINFORCEMENT BARS SHALL CONFORM TO THE REQUIREMENTS OF ASTM A706 GRADE 60 (IL MODIFIED). SEE SPECIAL PROVISIONS.

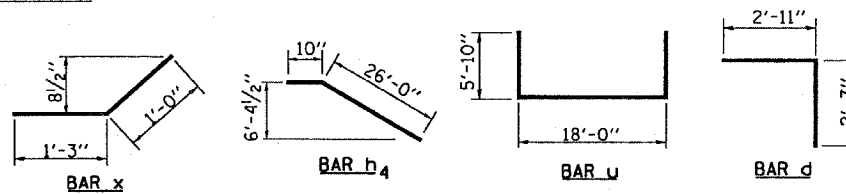
SEE PLAN AND PROFILE SHEET FOR MORE INFORMATION.
SEE CROSS SECTION SHEET FOR MORE INFORMATION.

THIS WORK SHALL BE DONE ACCORDING TO THE APPLICABLE PORTION OF 503, 508, 540, AND 542 OF THE STANDARD SPECIFICATIONS.

EXPOSED EDGES SHALL BE BEVELED 3/4".

PLACE 1/2" PJF BETWEEN PIPE CULVERT AND WALL.

THE COST OF PJF, EARTH EXCAVATION, WHERE REQUIRED, AND NECESSARY GRADING TO FIT THE INLET AS SHOWN IN THE CROSS SECTIONS OR TO THE SLOPE IS INCLUDED IN COST OF "CLASS "SI" CONCRETE."



BOTTOM SLAB PLAN VIEW

