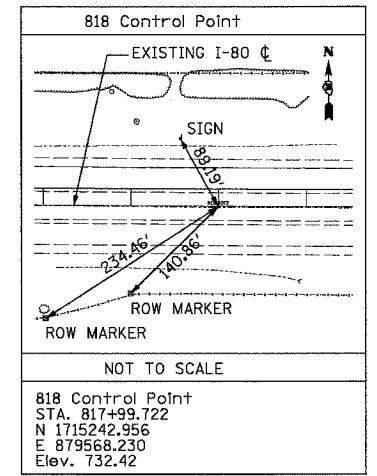
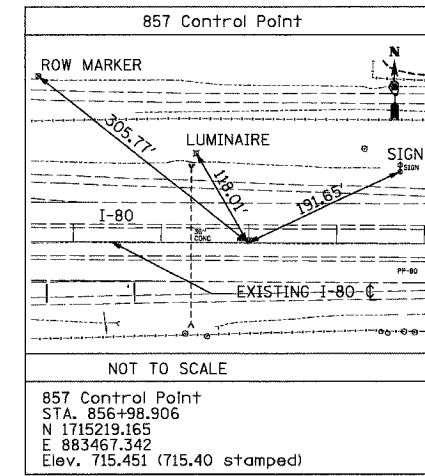


F.A.I. RTE.	SECTION	COUNTY	TOTAL SHEETS	SHEET NO.
80	(50-5) HBK-2	LASALLE	331	19
STA.		TO STA.		
FED. ROAD DIST. NO.		ILLINOIS FED. AID PROJECT		



STATE PLANE COORDINATES

DESCRIPTION	NORTHING	EASTING
EXISTING MARSEILLES ROAD		
P.O.T. 99+08.27	1713137.1010	881947.9750
P.O.T. 112+98.88	1714527.5950	881929.7330
P.O.T. 127+01.17	1715928.5270	881907.0050
P.O.T. 139+18.10	1717146.4660	881887.1650
P.O.T. 140+49.77	1717278.1260	881885.9992
RAMP A		
P.O.T. 200+00.00	1715719.1458	881910.4019
P.C. 201+99.91	1715664.2789	881718.1652
P.I. 202+88.51	1715639.9635	881632.9718
P.T. 203+75.83	1715592.0636	881558.4416
P.C. 206+20.83	1715459.6020	881352.3375
P.I. 208+92.68	1715312.6261	881123.6497
P.T. 211+50.37	1715308.8720	880851.8300
P.O.T. 226+09.18	1715288.7265	879393.1635
RAMP B		
P.O.T. 300+00.00	1715260.9616	883949.1086
P.C. 309+02.97	1715325.5029	883051.3701
P.I. 311+72.86	1715332.0627	882778.4033
P.T. 314+33.92	1715462.1951	882541.9538
P.C. 316+93.92	1715587.5570	882314.1724
P.I. 318+10.46	1715643.7476	882212.0746
P.T. 319+25.71	1715672.0801	882099.0321
P.O.T. 321+20.18	1715719.3585	881910.3984
RAMP C		
P.O.T. 400+00.00	1715196.2859	879893.4566
P.C. 409+00.97	1715141.6673	880792.7715
P.I. 411+72.71	1715125.1942	881064.0061
P.T. 414+35.43	1714993.4802	881301.6845
P.C. 416+95.43	1714867.4541	881529.0991
P.I. 418+13.30	1714810.3183	881632.2007
P.T. 419+29.84	1714781.6611	881746.5388
P.O.T. 421+15.21	1714736.5958	881926.3423

DESCRIPTION	NORTHING	EASTING
RAMP D		
P.O.T. 500+00.00	1714736.5958	881926.3423
P.C. 502+33.45	1714800.8551	882150.8234
P.I. 503+22.71	1714825.3538	882236.6593
P.T. 504+10.87	1714872.0847	882312.7133
P.C. 506+55.87	1715000.3458	882521.4573
P.I. 509+31.10	1715144.4332	882755.9584
P.T. 511+93.03	1715148.2340	883031.1628
P.O.T. 526+44.77	1715168.2819	884482.7623
EXISTING I-80		
P.O.T. 738+00.00	1715292.7340	871568.6630
P.C. 881+38.00	1715204.0210	885906.3920
P.I. 889+43.57	1715199.0360	886711.9440
P.T. 897+49.11	1715205.6190	887517.4840
P.O.T. 924+96.03	1715228.0670	890264.3120

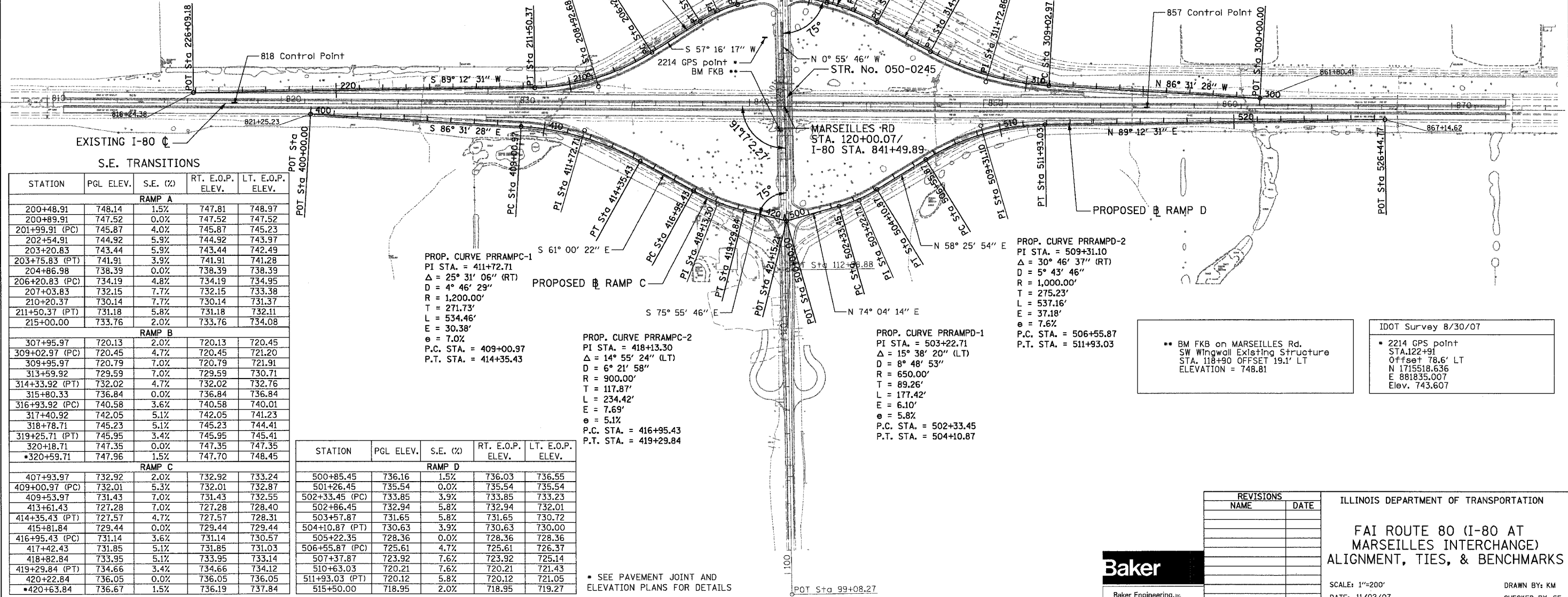
EXISTING MARSEILLES ROAD C

PROP. CURVE PRRAMPA-1  
PI STA. = 202+88.51  
 $\Delta = 16^\circ 47' 57''$  (LT)  
D =  $9^\circ 32' 57''$   
R = 600.00'  
T = 88.60'  
L = 175.92'  
E = 6.51'  
 $e = 5.9\%$   
P.C. STA. = 201+99.91  
P.T. STA. = 203+75.83

PROP. CURVE PRRAMPB-2  
PI STA. = 318+10.46  
 $\Delta = 14^\circ 45' 22''$  (LT)  
D =  $6^\circ 21' 58''$   
R = 900.00'  
T = 116.54'  
L = 231.79'  
E = 7.51'  
 $e = 5.1\%$   
P.C. STA. = 316+93.92  
P.T. STA. = 319+25.71

PROP. CURVE PRRAMPB-1  
PI STA. = 311+72.86  
 $\Delta = 25^\circ 21' 04''$  (RT)  
D =  $4^\circ 46' 29''$   
R = 1,200.00'  
T = 269.89'  
L = 530.95'  
E = 29.98'  
 $e = 7.0\%$   
P.C. STA. = 309+02.97  
P.T. STA. = 314+33.92

PROP. CURVE PRRAMPA-2  
PI STA. = 208+92.68  
 $\Delta = 31^\circ 56' 14''$  (RT)  
D =  $6^\circ 01' 52''$   
R = 950.00'  
T = 271.85'  
L = 529.54'  
E = 38.13'  
 $e = 7.7\%$   
P.C. STA. = 206+20.83  
P.T. STA. = 211+50.37



S.E. TRANSITIONS

STATION	PGL ELEV.	S.E. (%)	RT. E.O.P. ELEV.	LT. E.O.P. ELEV.
RAMP A				
200+48.91	748.14	1.5%	747.81	748.97
200+89.91	747.52	0.0%	747.52	747.52
201+99.91 (PC)	745.87	4.0%	745.87	745.23
202+54.91	744.92	5.9%	744.92	743.97
203+20.83	743.44	5.9%	743.44	742.49
203+75.83 (PT)	741.91	3.9%	741.91	741.28
204+86.98	738.39	0.0%	738.39	738.39
206+20.83 (PC)	734.19	4.8%	734.19	734.95
207+03.83	732.15	7.7%	732.15	733.38
210+20.37	730.14	7.7%	730.14	731.37
211+50.37 (PT)	731.18	5.8%	731.18	732.11
215+00.00	733.76	2.0%	733.76	734.08
RAMP B				
307+95.97	720.13	2.0%	720.13	720.45
309+02.97 (PC)	720.45	4.7%	720.45	721.20
309+95.97	720.79	7.0%	720.79	721.91
313+59.92	729.59	7.0%	729.59	730.71
314+33.92 (PT)	732.02	4.7%	732.02	732.76
315+80.33	736.84	0.0%	736.84	736.84
316+93.92 (PC)	740.58	3.6%	740.58	740.01
317+40.92	742.05	5.1%	742.05	741.23
318+78.71	745.23	5.1%	745.23	744.41
319+25.71 (PT)	745.95	3.4%	745.95	745.41
320+18.71	747.35	0.0%	747.35	747.35
*320+59.71	747.96	1.5%	747.70	748.45
RAMP C				
407+93.97	732.92	2.0%	732.92	733.24
409+00.97 (PC)	732.01	5.3%	732.01	732.87
409+53.97	731.43	7.0%	731.43	732.55
413+61.43	727.28	7.0%	727.28	728.40
414+35.43 (PT)	727.57	4.7%	727.57	728.31
415+81.84	729.44	0.0%	729.44	729.44
416+95.43 (PC)	731.14	3.6%	731.14	730.57
417+42.43	731.85	5.1%	731.85	731.03
418+82.84	733.95	5.1%	733.95	733.14
419+29.84 (PT)	734.66	3.4%	734.66	734.12
420+22.84	736.05	0.0%	736.05	736.05
*420+63.84	736.67	1.5%	736.19	737.84
RAMP D				
500+85.45	736.16	1.5%	736.03	736.55
501+26.45	735.54	0.0%	735.54	735.54
502+33.45 (PC)	733.85	3.9%	733.85	733.23
502+86.45	732.94	5.8%	732.94	732.01
503+57.87	731.65	5.8%	731.65	730.72
504+10.87 (PT)	730.63	3.9%	730.63	730.00
505+22.35	728.36	0.0%	728.36	728.36
506+55.87 (PC)	725.61	4.7%	725.61	726.37
507+37.87	723.92	7.6%	723.92	725.14
510+63.03	720.21	7.6%	720.21	721.43
511+93.03 (PT)	720.12	5.8%	720.12	721.05
515+50.00	718.95	2.0%	718.95	719.27

STATION	PGL ELEV.	S.E. (%)	RT. E.O.P. ELEV.	LT. E.O.P. ELEV.
RAMP D				
500+85.45	736.16	1.5%	736.03	736.55
501+26.45	735.54	0.0%	735.54	735.54
502+33.45 (PC)	733.85	3.9%	733.85	733.23
502+86.45	732.94	5.8%	732.94	732.01
503+57.87	731.65	5.8%	731.65	730.72
504+10.87 (PT)	730.63	3.9%	730.63	730.00
505+22.35	728.36	0.0%	728.36	728.36
506+55.87 (PC)	725.61	4.7%	725.61	726.37
507+37.87	723.92	7.6%	723.92	725.14
510+63.03	720.21	7.6%	720.21	721.43
511+93.03 (PT)	720.12	5.8%	720.12	721.05
515+50.00	718.95	2.0%	718.95	719.27

\* SEE PAVEMENT JOINT AND ELEVATION PLANS FOR DETAILS

\*\* BM FKB on MARSEILLES Rd. SW Wingwall Existing Structure STA. 118+90 OFFSET 19.1' LT ELEVATION = 748.81

IDOT Survey 8/30/07  
\* 2214 GPS point STA. 122+91 Offset 78.6' LT N 1715518.636 E 881835.007 Elev. 743.607

REVISIONS	
NAME	DATE

ILLINOIS DEPARTMENT OF TRANSPORTATION  
FAI ROUTE 80 (I-80 AT MARSEILLES INTERCHANGE) ALIGNMENT, TIES, & BENCHMARKS  
SCALE: 1"=200'  
DATE: 11/02/07  
DRAWN BY: KM  
CHECKED BY: SE

