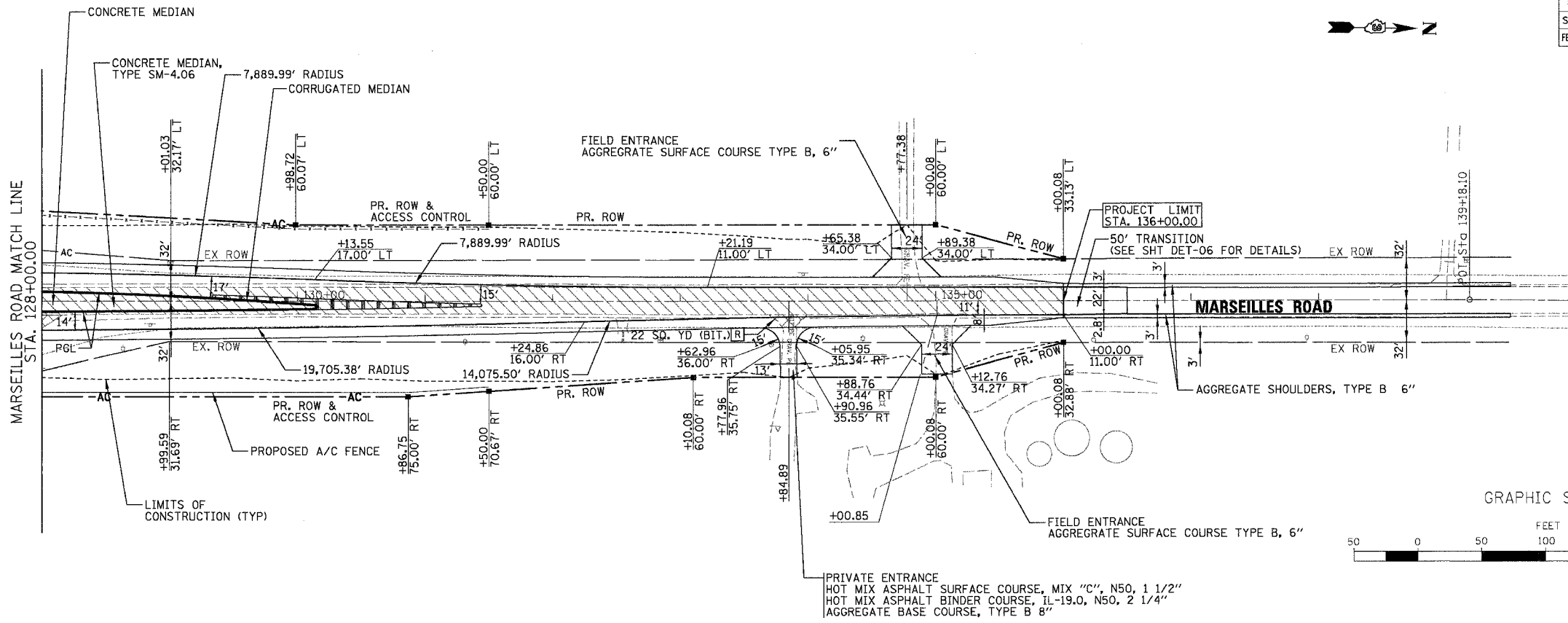


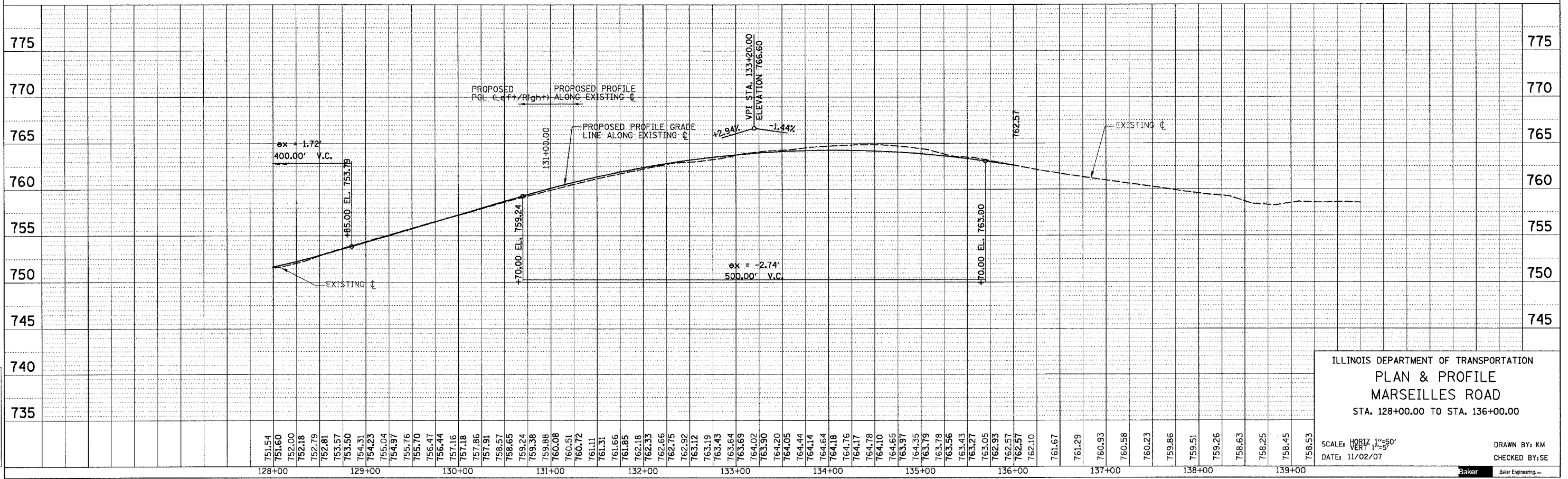
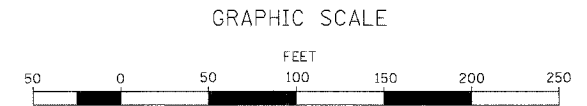
F.A.I. RTE.	SECTION	COUNTY	TOTAL SHEETS	SHEET NO.
80	(50-5) HBK-2	LASALLE	331	23
STA. 128+00.00 TO STA. 136+00.00				
FED. ROAD DIST. NO.		ILLINOIS	FED. AID PROJECT	

- NOTES:
- SEE LIGHTING PLANS FOR THE LOCATIONS OF TEMPORARY AND PROPOSED LIGHTING
 - SEE TYPICAL SECTIONS FOR PAVEMENT STRUCTURE.
 - SEE ROADWAY AND INTERSECTION DETAILS FOR MORE GEOMETRIC DETAIL.
 - SEE PAVEMENT JOINT AND ELEVATION PLAN FOR JOINTING AND ELEVATION DETAILS.
 - PROPOSED DRIVEWAY CENTERLINES ARE PERPENDICULAR TO MARSEILLES ROAD CENTERLINE UNLESS OTHERWISE NOTED.
 - SEE DRAINAGE & UTILITY PLANS FOR REMOVAL OF STORM SEWER PIPE, STRUCTURES AND RELATED WORK.

PLAN	SURVEYED	DATE
	PLotted	
	Checked	
	By	
	Checked	
	By	
	Checked	
	By	



- LEGEND
- [R] REMOVAL ITEMS
 - [Hatched Box] PAVEMENT & SHOULDER REMOVAL
 - [Cross-hatched Box] DRIVEWAY PAVEMENT REMOVAL
 - [X] TREE REMOVAL
 - [Dashed Line] PROPOSED A/C FENCE



ILLINOIS DEPARTMENT OF TRANSPORTATION
 PLAN & PROFILE
 MARSEILLES ROAD
 STA. 128+00.00 TO STA. 136+00.00

SCALE: HORIZ 1"=50'
 VERT 1"=5'

DATE: 11/02/07
 DRAWN BY: KM
 CHECKED BY: SE



h:\07496\3.0 dellverables\3.2 roadway\design\sheet\180_RPP03.rpp 1/2/2007